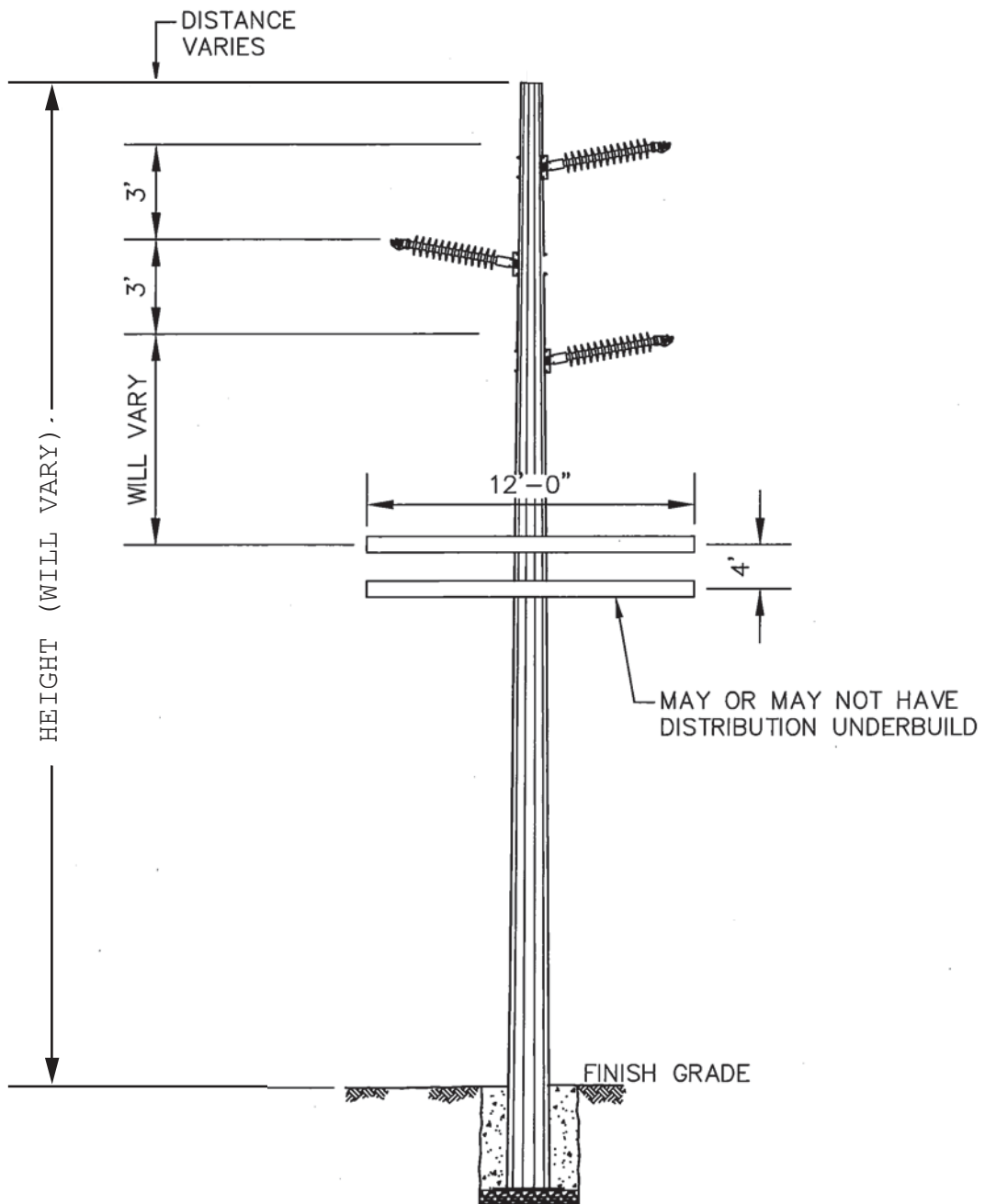
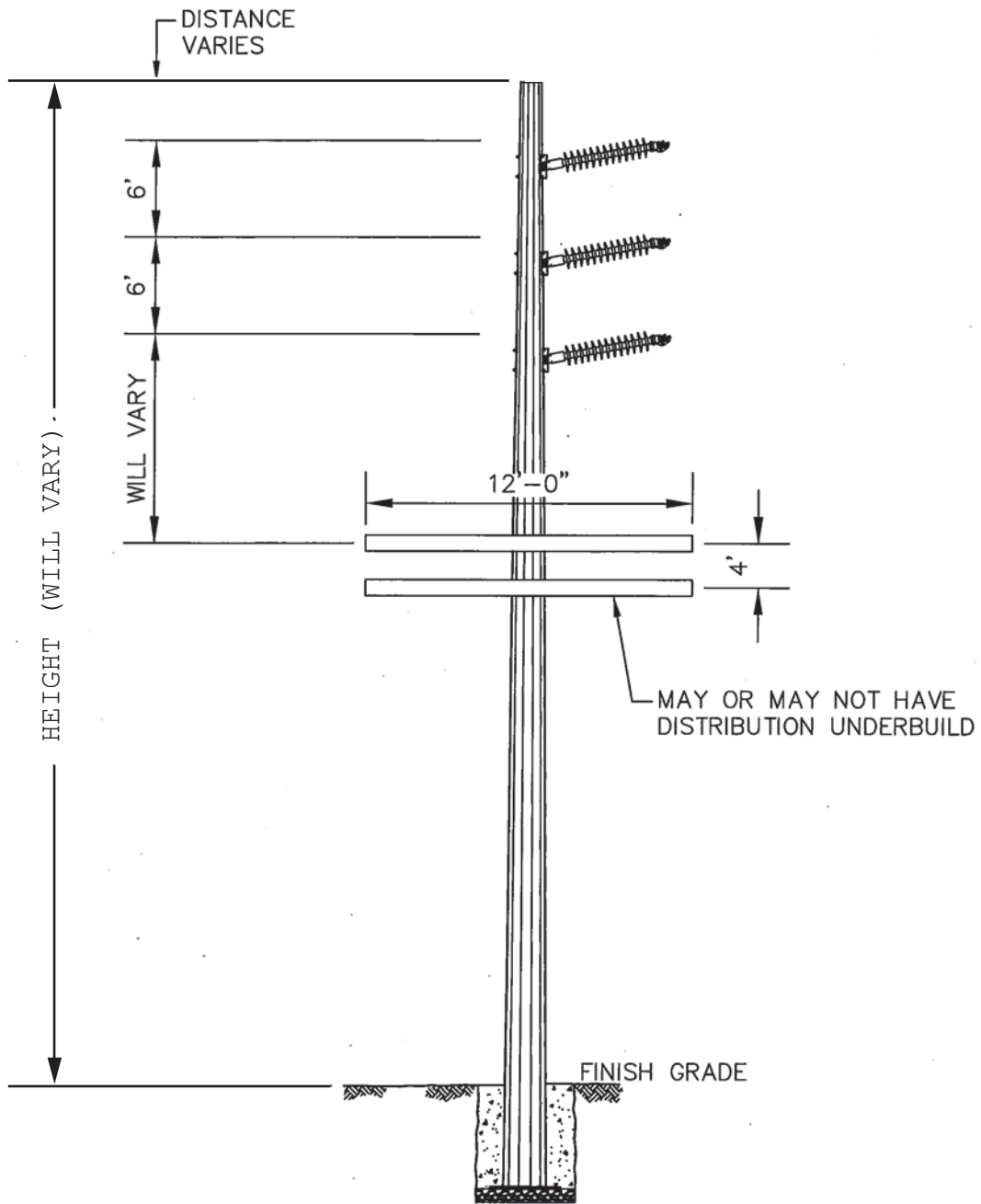


Notes:  
 - Distribution cross arm length and spacing may vary.



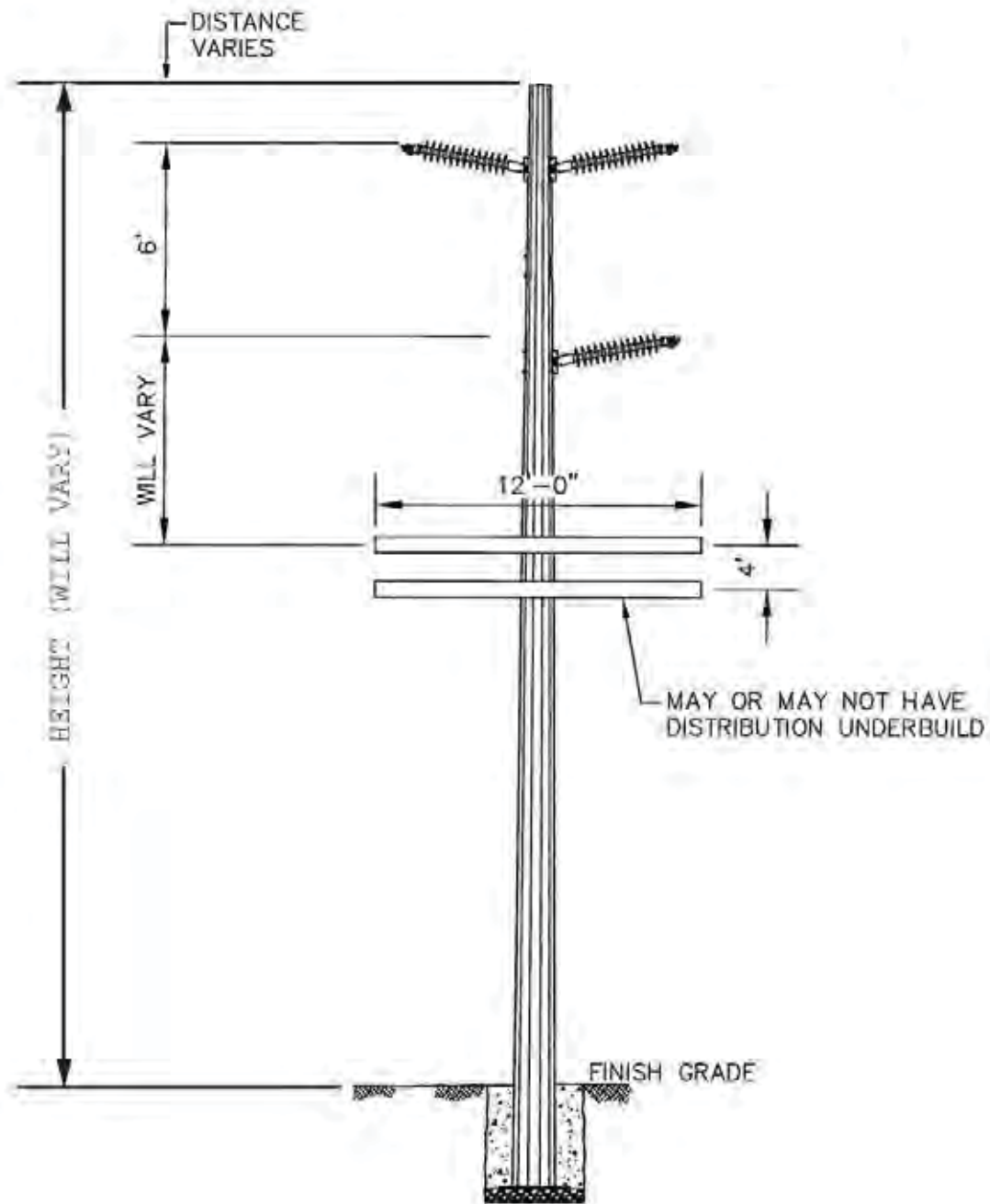
Notes:

- Distribution cross arm length and spacing may vary.



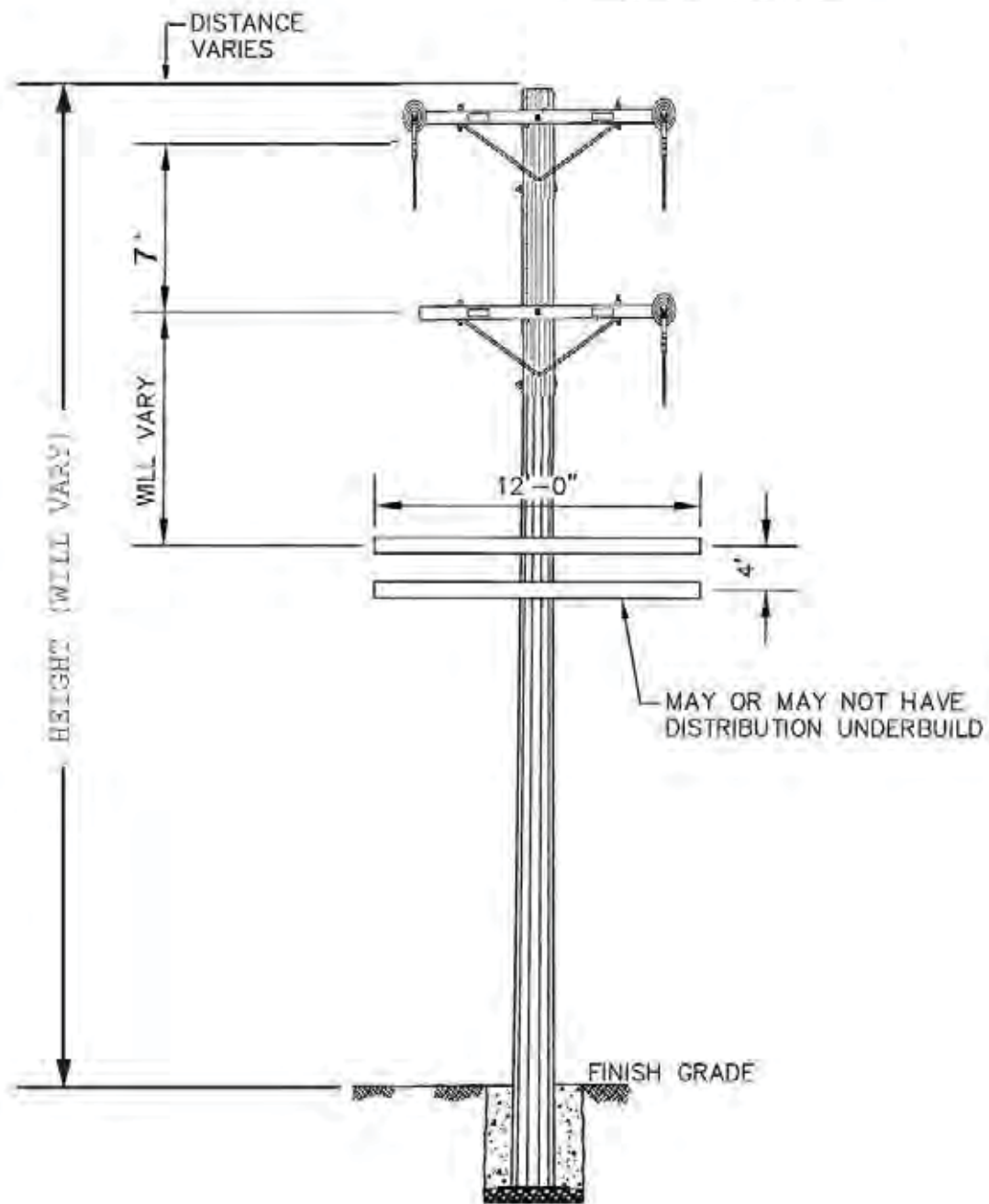
Notes:

- Distribution cross arm length and spacing may vary.



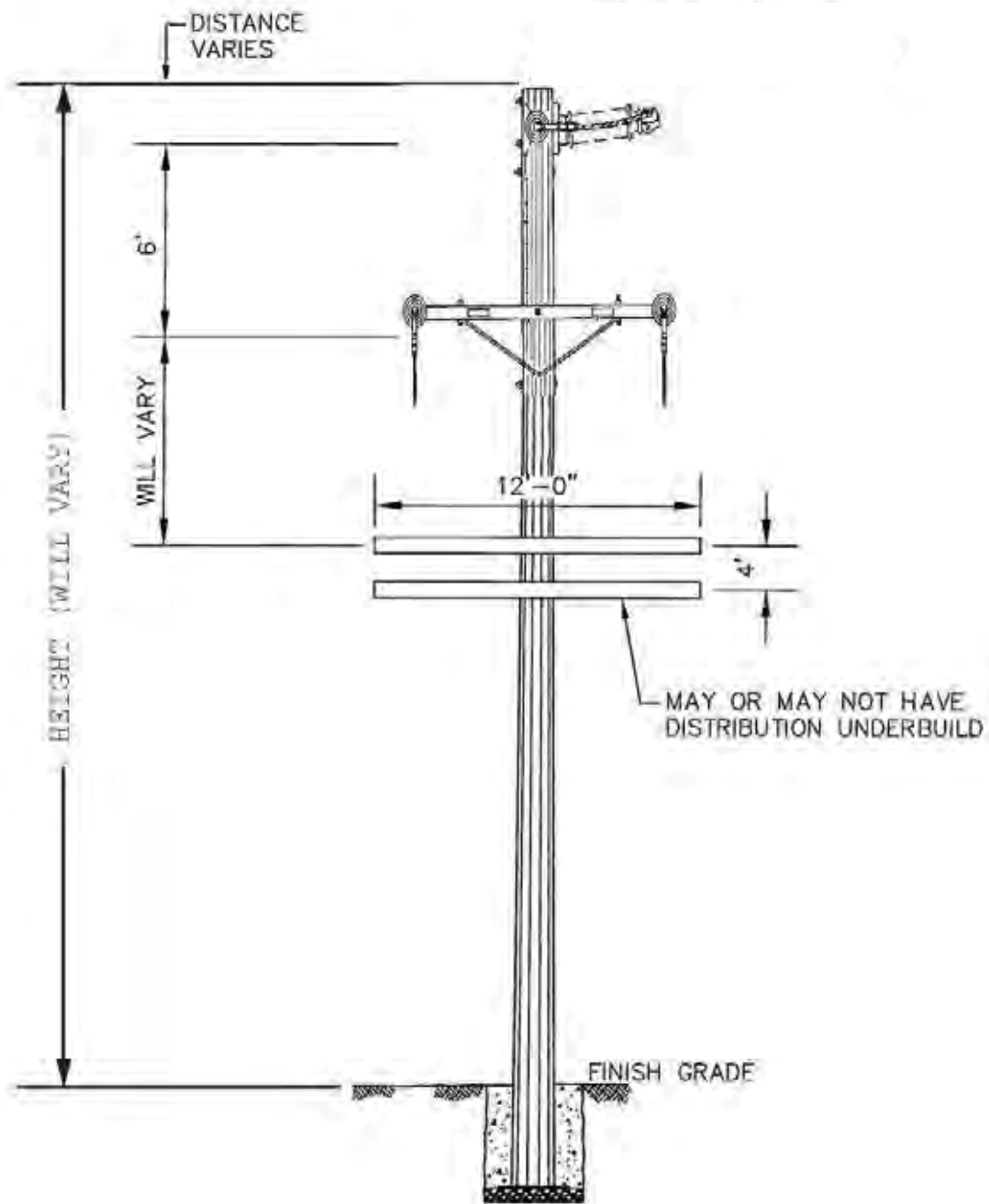
Notes:

- Distribution cross arm length and spacing may vary.



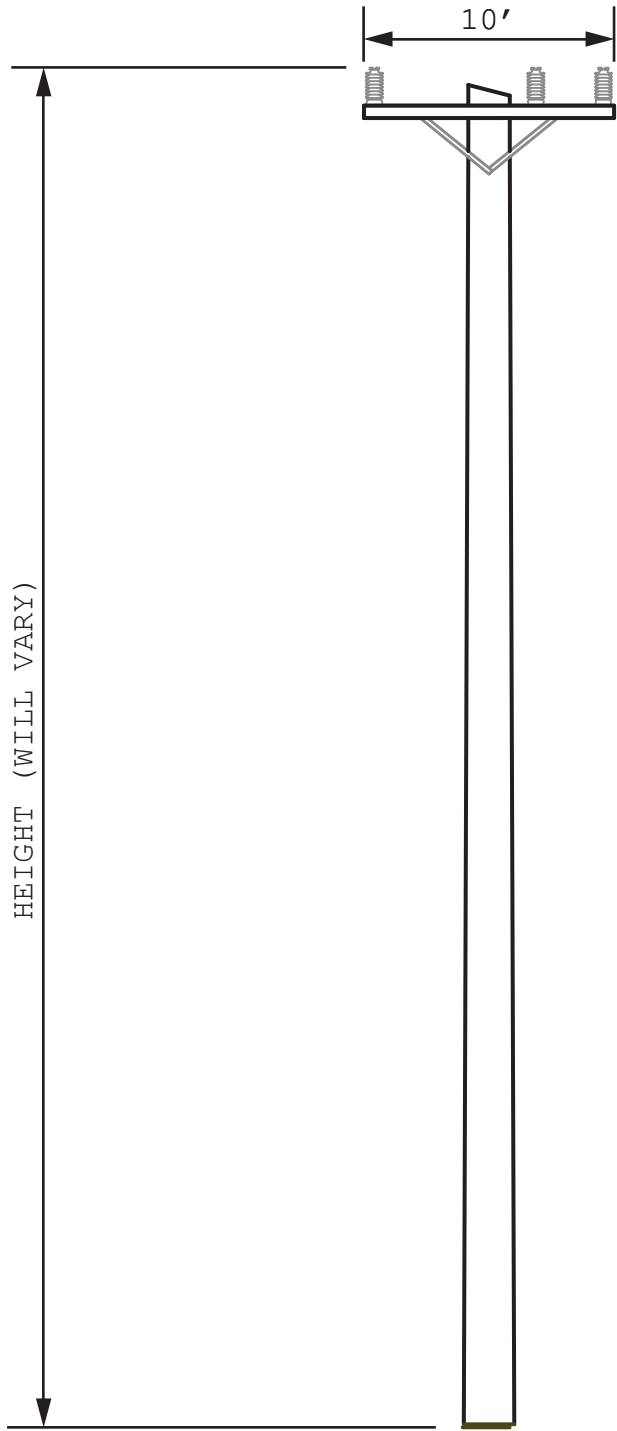
Notes:

- Distribution cross arm length and spacing may vary.

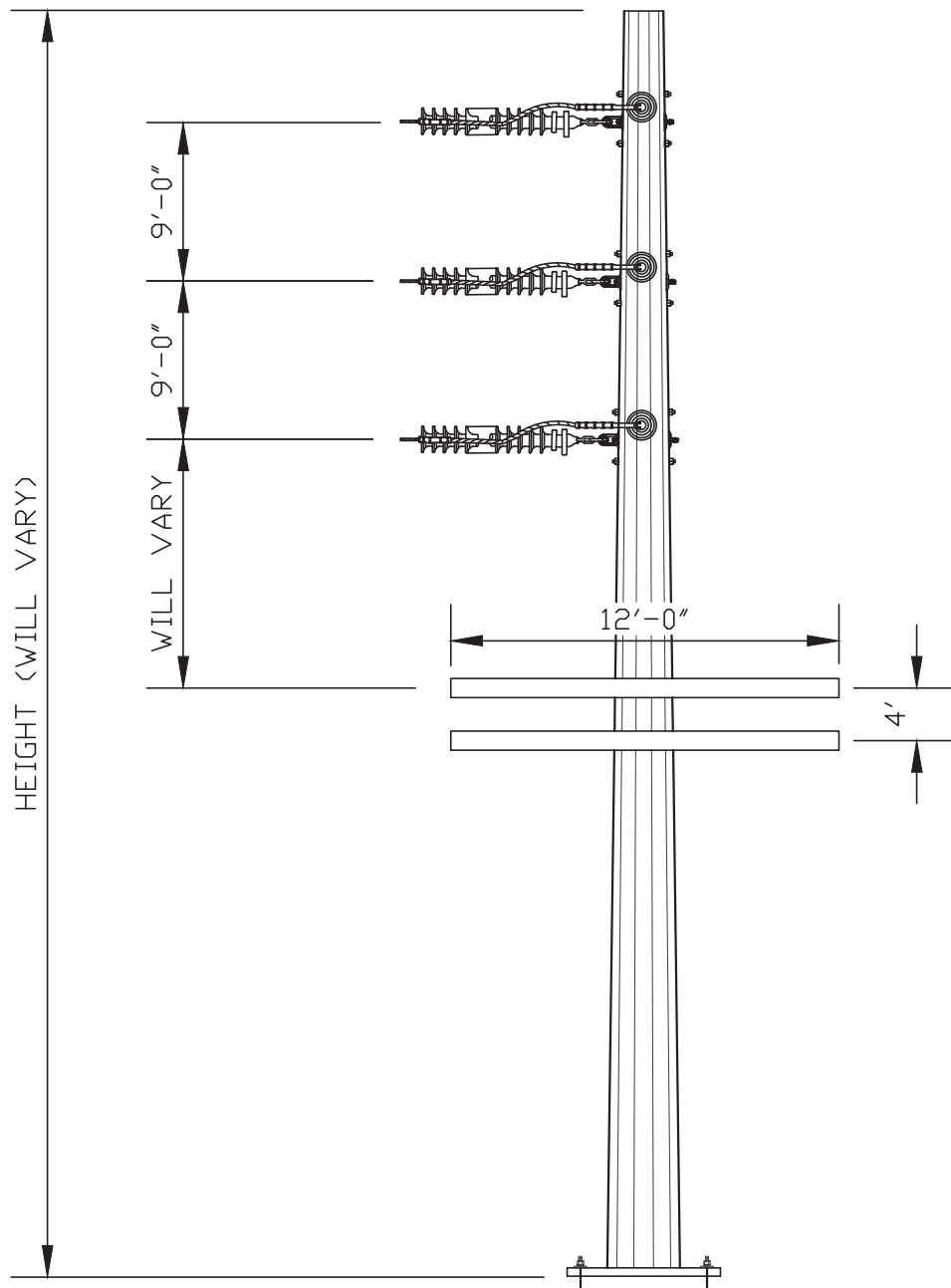


Notes:

- Distribution cross arm length and spacing may vary.



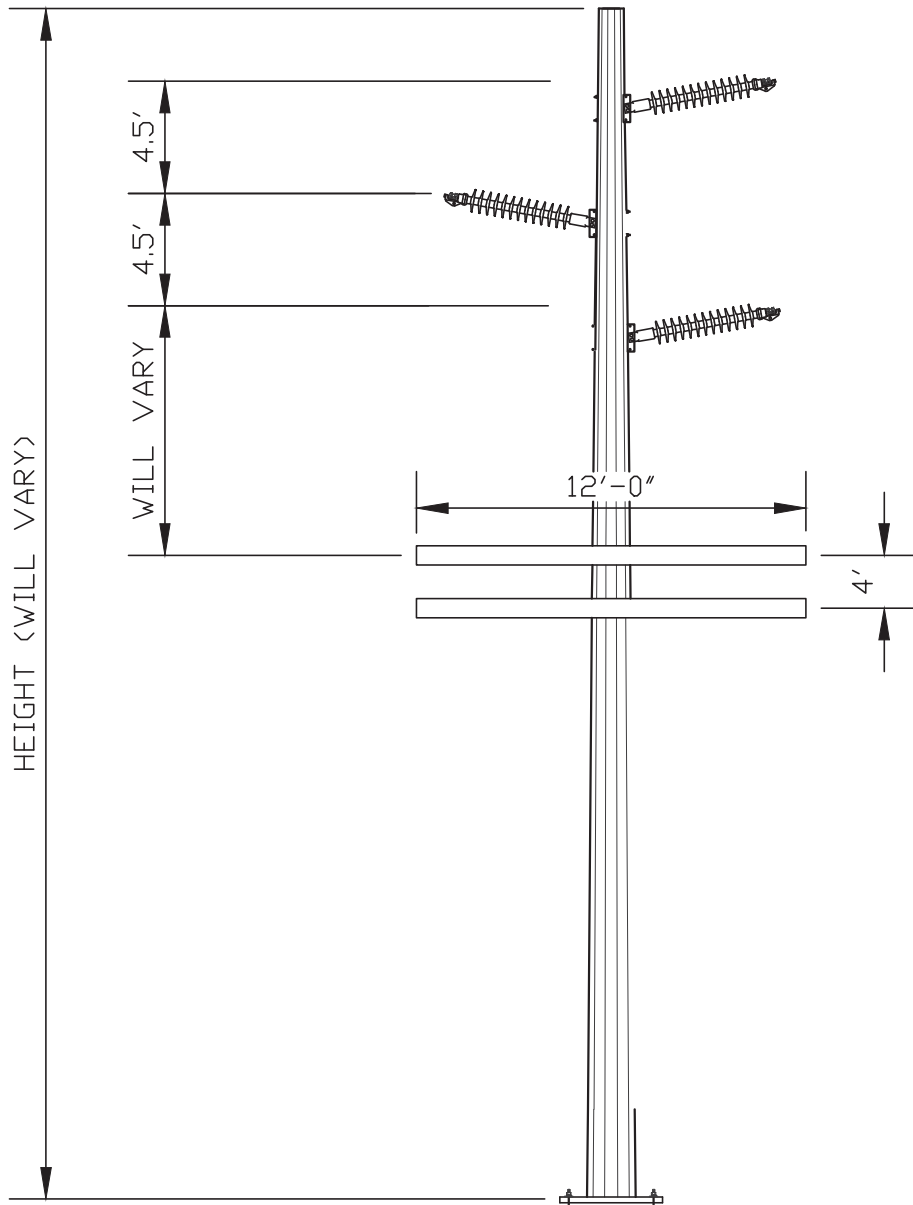
Typical Existing Wood Distribution Pole



Notes:

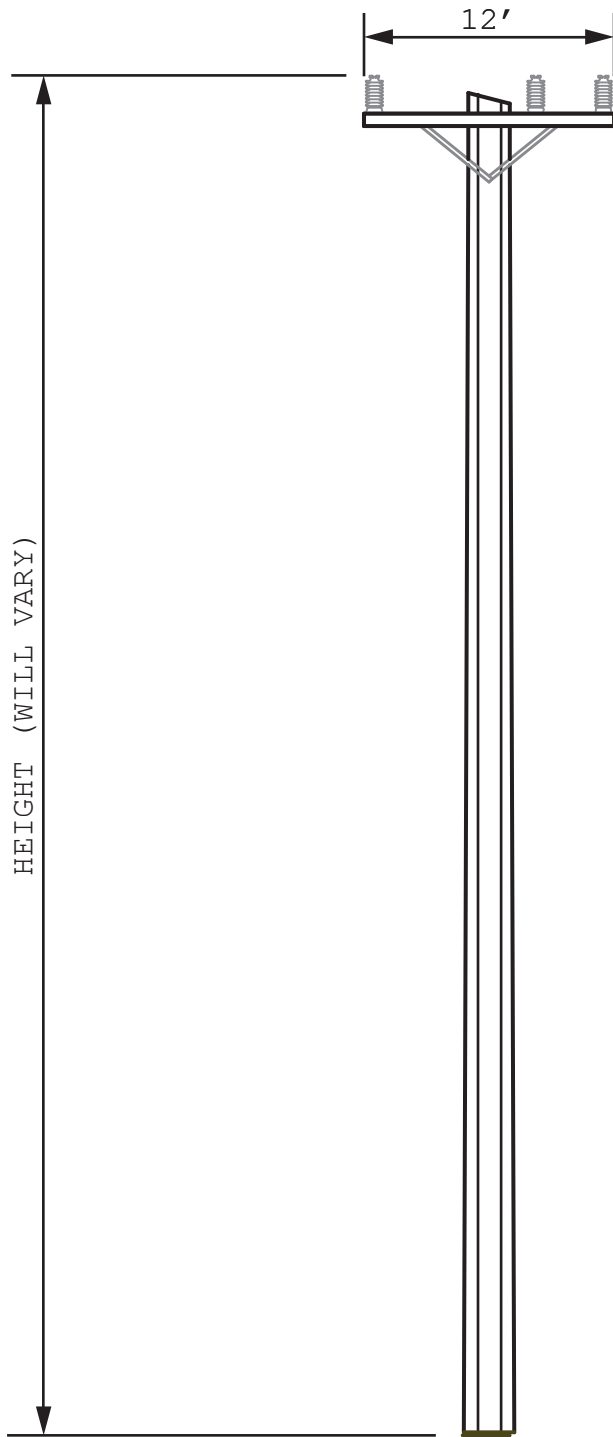
- Actual pole foundations will either be direct embed or micropile.
- The number of levels of distribution underbuild will vary.
- Distribution cross arm length and spacing may vary.





Notes:

- Actual pole foundations will either be direct embed or micropile.
- The number of levels of distribution underbuild will vary.
- Distribution cross arm length and spacing may vary.



Notes:

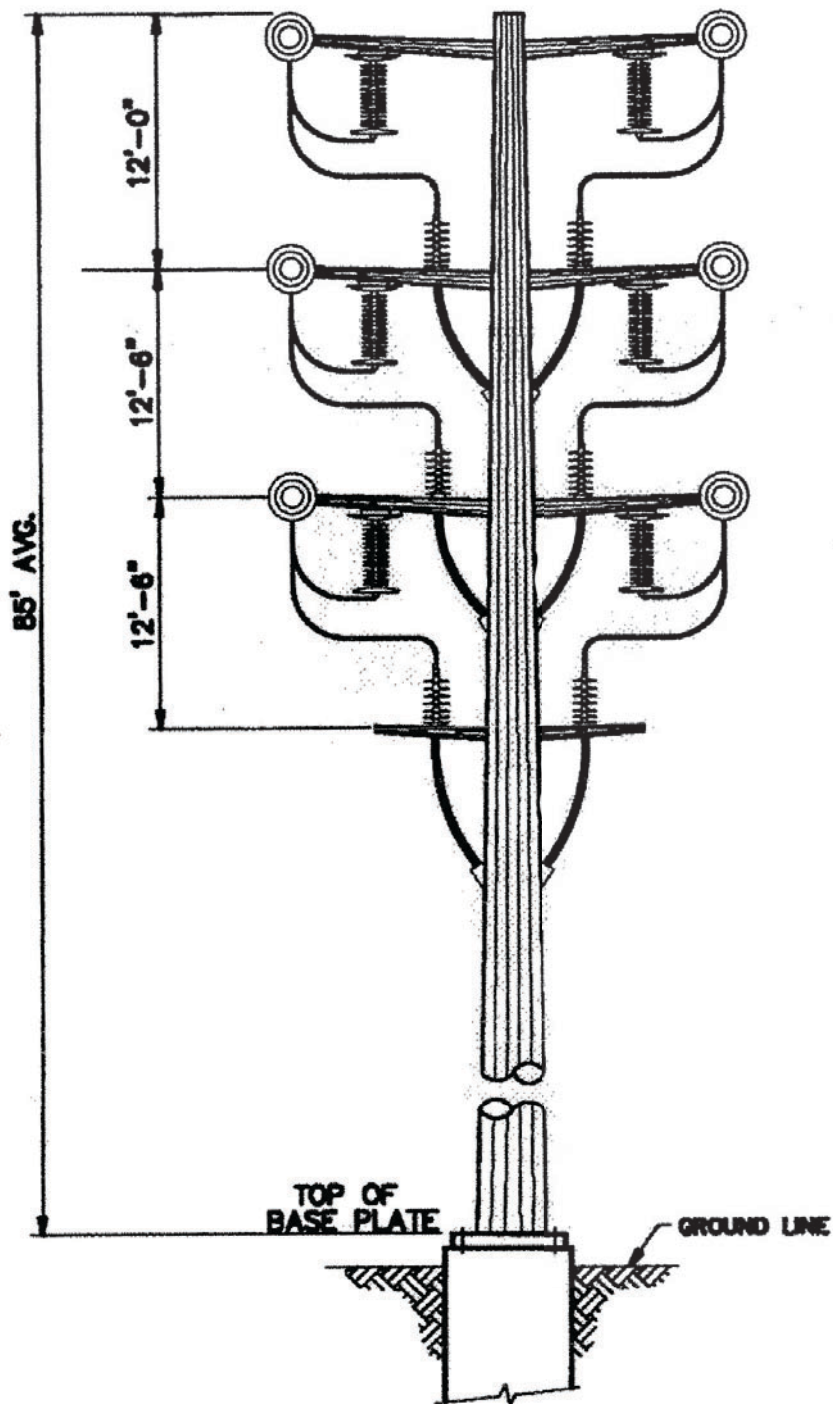
- Actual pole foundations will either be direct embed or micropile.



Photograph of a typical wood transmission pole (with distribution underbuild)



Photograph of a bucket truck guard structure at a road crossing



Typical Existing 69 kV Steel Cable Riser Pole

