



California Public Utilities Commission

November 23, 2016

Notice of Availability of a Draft Environmental Impact Report Regarding the Proposed Suncrest Dynamic Reactive Power Support Project

CALIFORNIA PUBLIC UTILITIES COMMISSION
505 Van Ness Avenue
San Francisco, CA 94102-3238

1. NOTICE IS HEREBY GIVEN that the California Public Utility Commission (CPUC), is the lead agency for preparation of a draft Environmental Impact Report (EIR) pursuant to the California Environmental Quality Act (CEQA) for construction and operation of the Suncrest Dynamic Reactive Power Support Project (Proposed Project). This DEIR was prepared in compliance with the California Environmental Quality Act (CEQA) of 1970 (as amended) and the State CEQA Guidelines (California Code of Regulations [CCR] title 14, section (§) 15000 et seq.). CPUC hereby invites comments on the adequacy and completeness of the environmental analyses in the draft EIR.
2. Project Title & Number: Suncrest Dynamic Reactive Power Support Project
3. Property Owner(s): Private Parties within the administrative boundary of the Cleveland National Forest
4. Contact Person: Rob Peterson; suncrestproject@horizonh2o.com
5. Project Location: unincorporated south-central San Diego County, approximately 3.75 miles southeast of the community of Alpine, off of Bell Bluff Truck Trail. (See attached project location map.)

Project APNs: 523-040-080 and 523-030-130

6. General Plan designation: RL-80
7. Zoning: Agriculture (A72)



8. Brief Description of the Project: The Proposed Project would involve construction and operation of a SVC dynamic reactive device and approximately one-mile-long transmission line interconnecting with the existing Suncrest Substation in San Diego County. The dynamic reactive device would provide voltage regulation and support for the existing transmission system in accordance with the California Independent System Operator Corporation's (CAISO's) 2013-2014 Transmission Plan. The Proposed Project would disturb approximately 12 acres during construction, with Project features occupying a permanent footprint of approximately 6 acres.
9. Project Alternatives: The draft EIR evaluates the potential environmental impacts of the Proposed Project and four project alternatives: the No Project Alternative, Northeast Site Alternative, Suncrest Substation Alternative, Overhead Transmission Line Alternative. These alternatives were determined to: (1) meet most of the project objectives; (2) be feasible; (3) avoid or reduce one or more of the Proposed Project's significant impacts, and (4) not be speculative.
10. The project site is not located on the lists enumerated under Section 65962.5 of the Government Code, including, but not limited to lists of hazardous waste facilities.
11. Copies of the draft EIR and all documents referenced are available for review online at www.cpuc.ca.gov/environment/info/horizonh2o/suncrest/index.html

Printed copies of the draft EIR and all document referenced are also available to review during regular business hours at the Alpine Branch Library, 1752 Alpine Blvd., Alpine, California 9190, (619) 445-4221. The draft EIR is also available on the CPUC's website at:

<http://www.cpuc.ca.gov/Environment/info/horizonh2o/suncrest/index.html>

12. Public Meeting: All interested persons are encouraged to attend a public meeting to present written and/or verbal comments on the draft EIR. The public meeting will be held at the following location and time:



Thursday, December 8, 2016
6:00 pm – 8:00 pm
Alpine Community Center
1830 Alpine Blvd.
Alpine, CA 91901

November 23, 2016

DATE OF THIS NOTICE



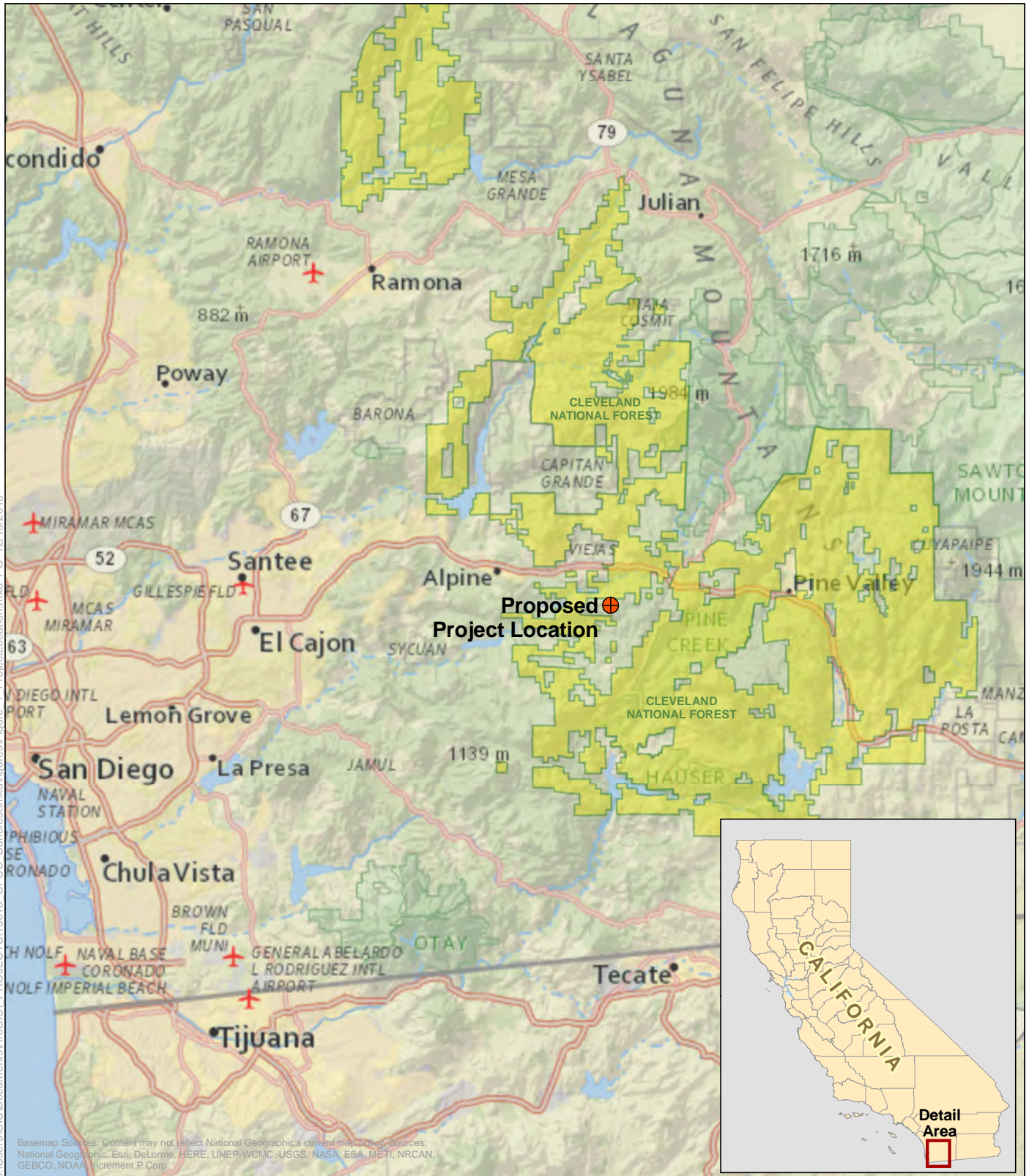
BY: Rob Peterson, CPUC

WRITTEN COMMENT PERIOD: November 23, 2016 to January 10, 2017

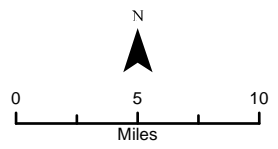
Please send written comments to the attention of Robert Peterson, c/o Tom Engels at Horizon Water and Environment, 180 Grand Avenue, Suite 1405, Oakland, CA 94612, or via e-mail to suncrestproject@horizonh2o.com.





C:\Users\GIS\Documents\ArcGIS\PROJECTS\15018_CPUC_Suncrest\mxd\figures\Figure_1_ProjectLocation.mxd, PG. 12/15/2015



Basemap Sources: Content may not reflect National Geographic's current map policy. Sources: National Geographic, Esri, DeLorme, HERE, UNEP-WCMC, USGS, NASA, ESA, METI, NRCAN, GEBCO, NOAA, increment P Corp.



-  Proposed Project Location
-  Cleveland National Forest

**Figure
Project Location**