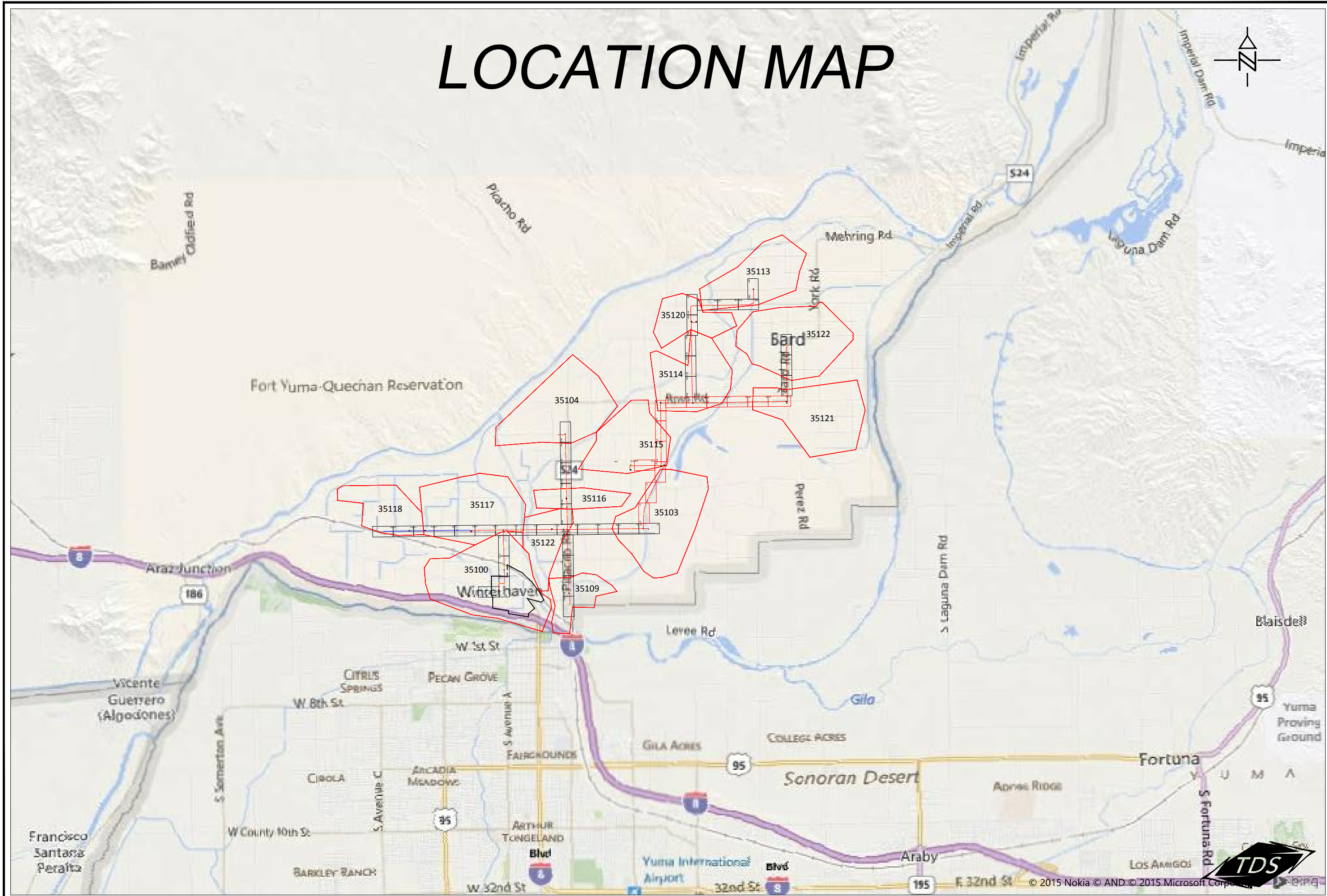


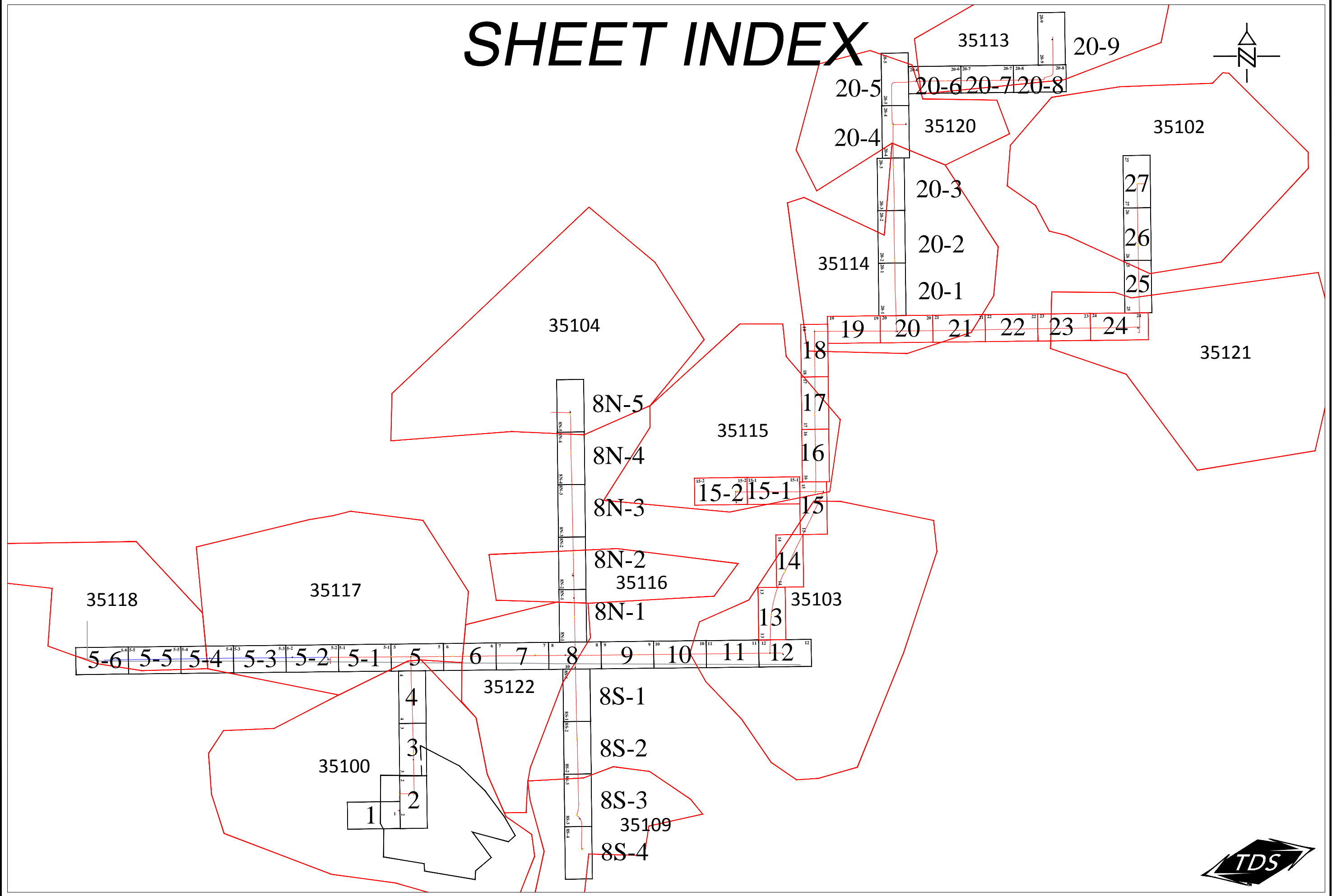
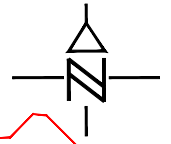
Appendix B

Project Plans

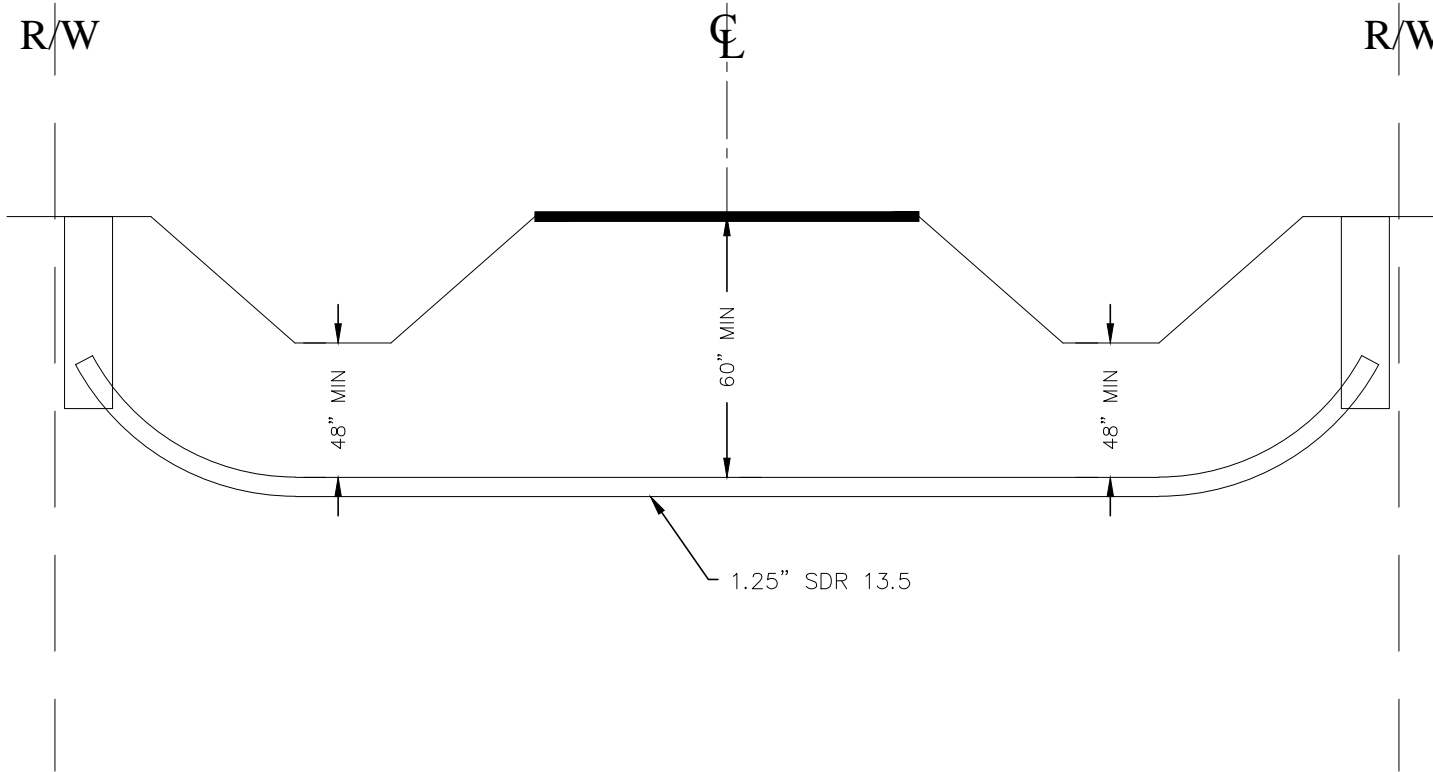
LOCATION MAP



SHEET INDEX



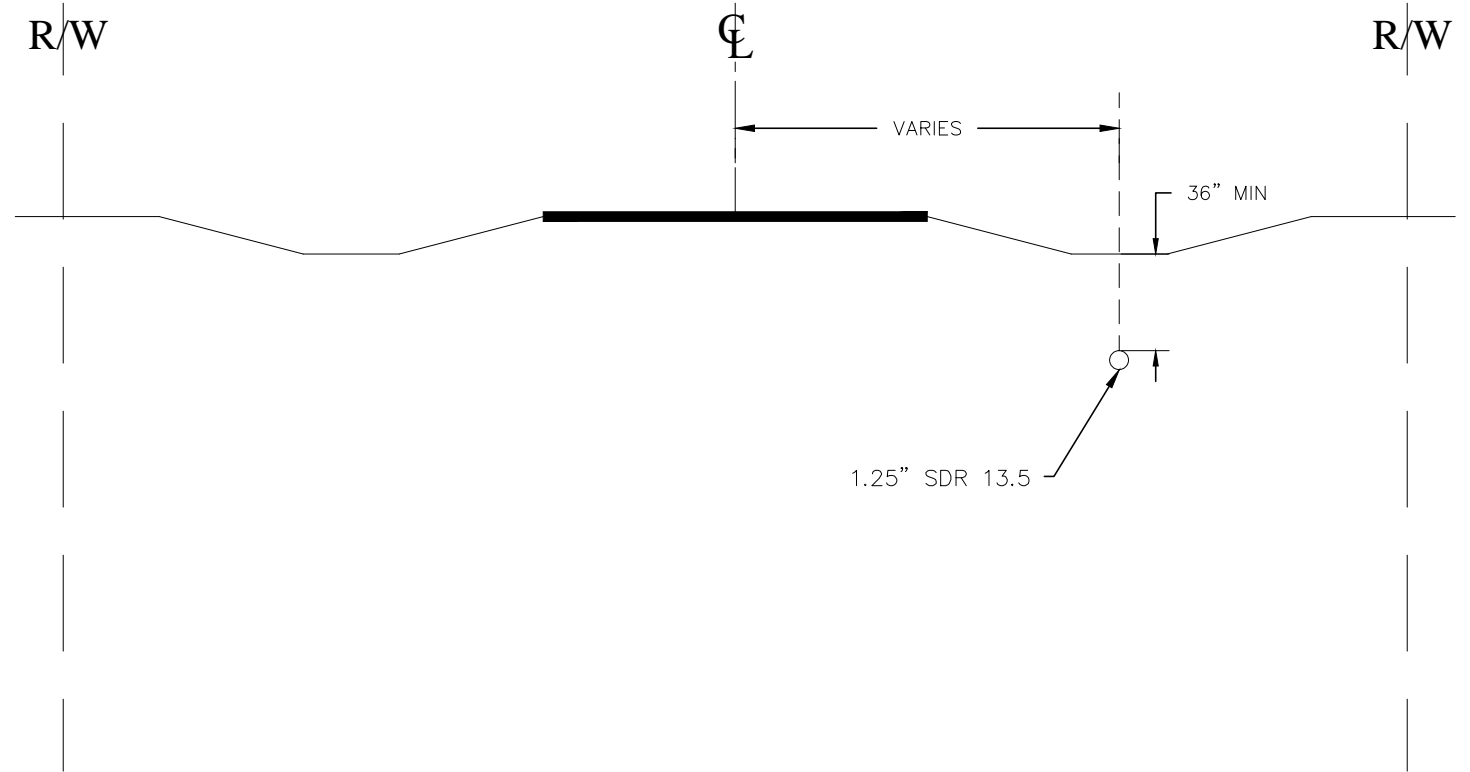
TYPICAL SECTIONS



TYPICAL BORE PROFILE

NOTES:

1. Crossing will be made utilizing directional bore methodology.
2. Depth to top of duct will be a minimum of forty-eight inches (48") below bottom of ditch
3. Depth to top of duct will be a minimum of sixty inches (60") below hard road surface, bottom of waterway or irrigation ditch.
4. Entry and Exit locations on each side of roadway will be dug down to depth of running line as required and care will be taken to return pits to original or better condition.



TYPICAL PARALLEL PROFILE

NOTES:

1. Minimum depth from ground to top of duct will be 36"
2. Placement shall be by directional bore, plow or trench methodology
3. When trenching or plowing, warning tape shall be placed 12" above top of duct
4. Running line shown on sheets subject to change due to location of existing utilities

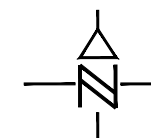
NOT TO SCALE





SHEET 2

RUNNING LINE = 3'
FROM EDGE PVMT
MIN DEPTH= 36"



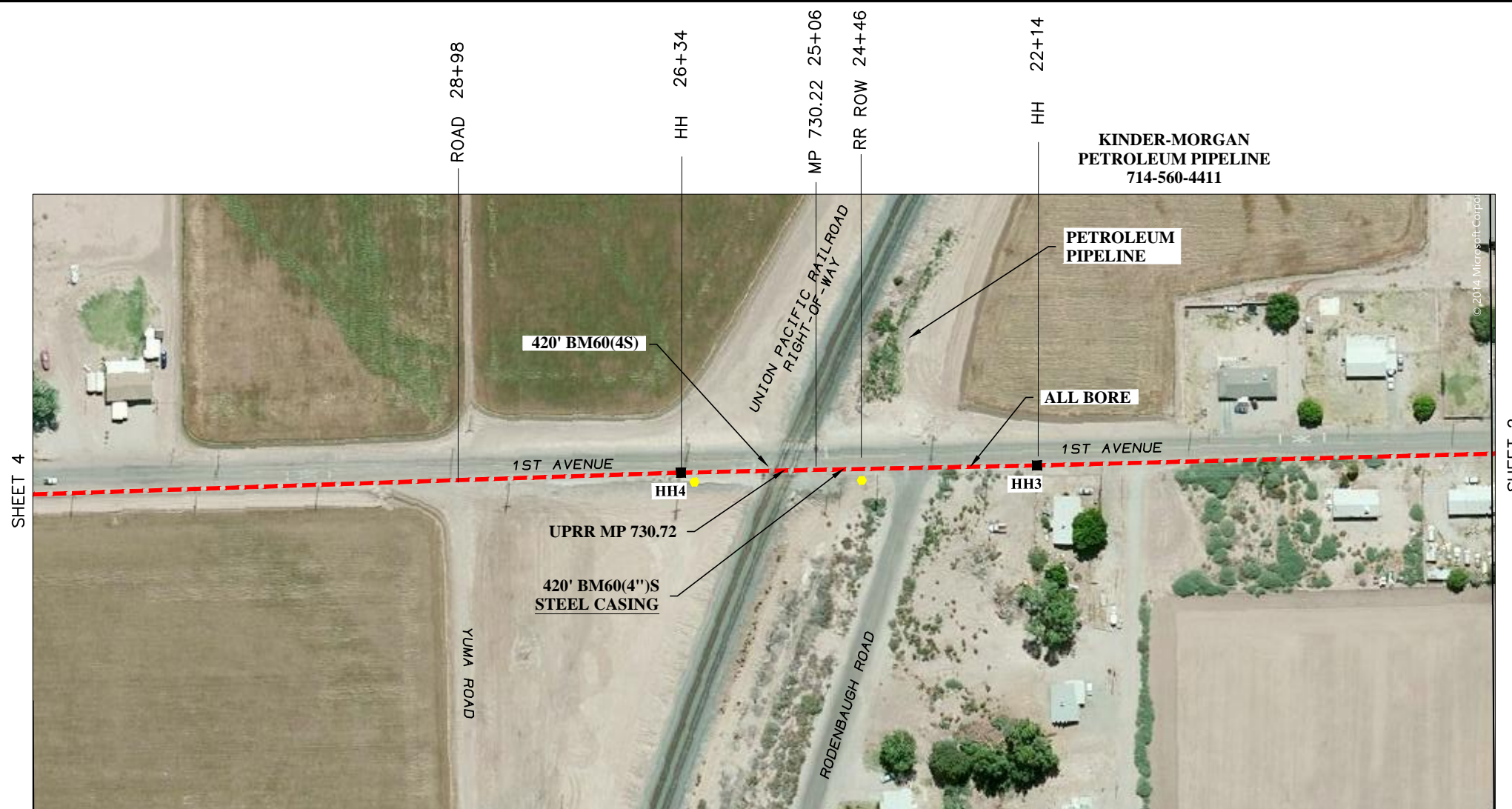
NOT TO SCALE



UNDERGROUND UTILITIES HAVE BEEN PLOTTED FROM FIELD OBSERVATIONS BUT ARE NOT NECESSARILY EXACT. IT IS THE CONTRACTORS RESPONSIBILITY TO FIELD LOCATE ALL UNDERGROUND OBSTRUCTIONS AND UTILITIES PRIOR TO CONSTRUCTION. COMPLETE REPAIR OF ANY AND ALL DAMAGES INCURRED SHALL BE AT THE EXPENSE OF THE CONTRACTOR.

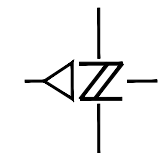


POLE / PEDS		CABLE												POLE LINE & PED HARDWARE								CUST NO.	HBFO (96)	H01	W UM				
TEL CO.	FOR CO.	BD / HA	BG / PG	LEAD ANGLE	POLE LENGTH CLASS	YEAR				BFO (96)	BFOIE (96)	BFOV (1)(1.25)	BM2 (5/8)(8)	BM 21	BM 53	BM 61D													
						SET	REM	%	W/																				
0+00	CO									100				1										1		96			1
0+64	MH										64																		
TOTAL										100	64			1												1	96		1



RUNNING LINE = 6'
FROM EDGE PVMT
MIN DEPTH= 36"

*SEE RAILROAD PERMIT
EXHIBIT FOR DETAIL
FROM HH3 TO HH4



NOT TO SCALE



UNDERGROUND UTILITIES HAVE BEEN PLOTTED FROM FIELD OBSERVATIONS BUT ARE NOT NECESSARILY EXACT. IT IS THE CONTRACTORS RESPONSIBILITY TO FIELD LOCATE ALL UNDERGROUND OBSTRUCTIONS AND UTILITIES PRIOR TO CONSTRUCTION. COMPLETE REPAIR OF ANY AND ALL DAMAGES INCURRED SHALL BE AT THE EXPENSE OF THE CONTRACTOR.



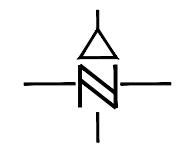
POLES / PEDS				CABLE									POLE LINE & PED HARDWARE				CUST NO.
POLE/ PED NO.		BD / HA	BG / PG	LEAD ANGLE	POLE LENGTH CLASS	YEAR				BFO (96)	BFOI (96)	BFOV (1)(1.25)	BM2 (5/8)(8)	BM 55F	BM 61	BM 60(4'')S	
TEL CO.	FOR CO.					SET	REM	%	W/								
15+74	SHT 2																
22+14	HH3	BH2 / BD3							100	680	680	1		680			
26+34	HH4	BH2 / BD3							100	454	454	1	2	420			
28+98	ROAD									292	292						
TOTAL		2 / 2							200	1426	1426	2	2	680	420		



SHEET 7 OF 27
EX. ROUTE AL
MAP REF. 351027
COUNTY: IMPERIAL
TOWNSHIP:
TAX DISTRICT:
MUNICIPALITY: WINTERHAVEN
TWN/RGE 16S / 22E
SEC. 21
STAKED BY FARR
DATE 01/14
DRAFTED BY FARR
DATE 10/14
W.O. TC-CA351ENG-001
REV
REV
REV
FILE:



RUNNING LINE = 6'
FROM EDGE PVMT
MIN DEPTH= 36"

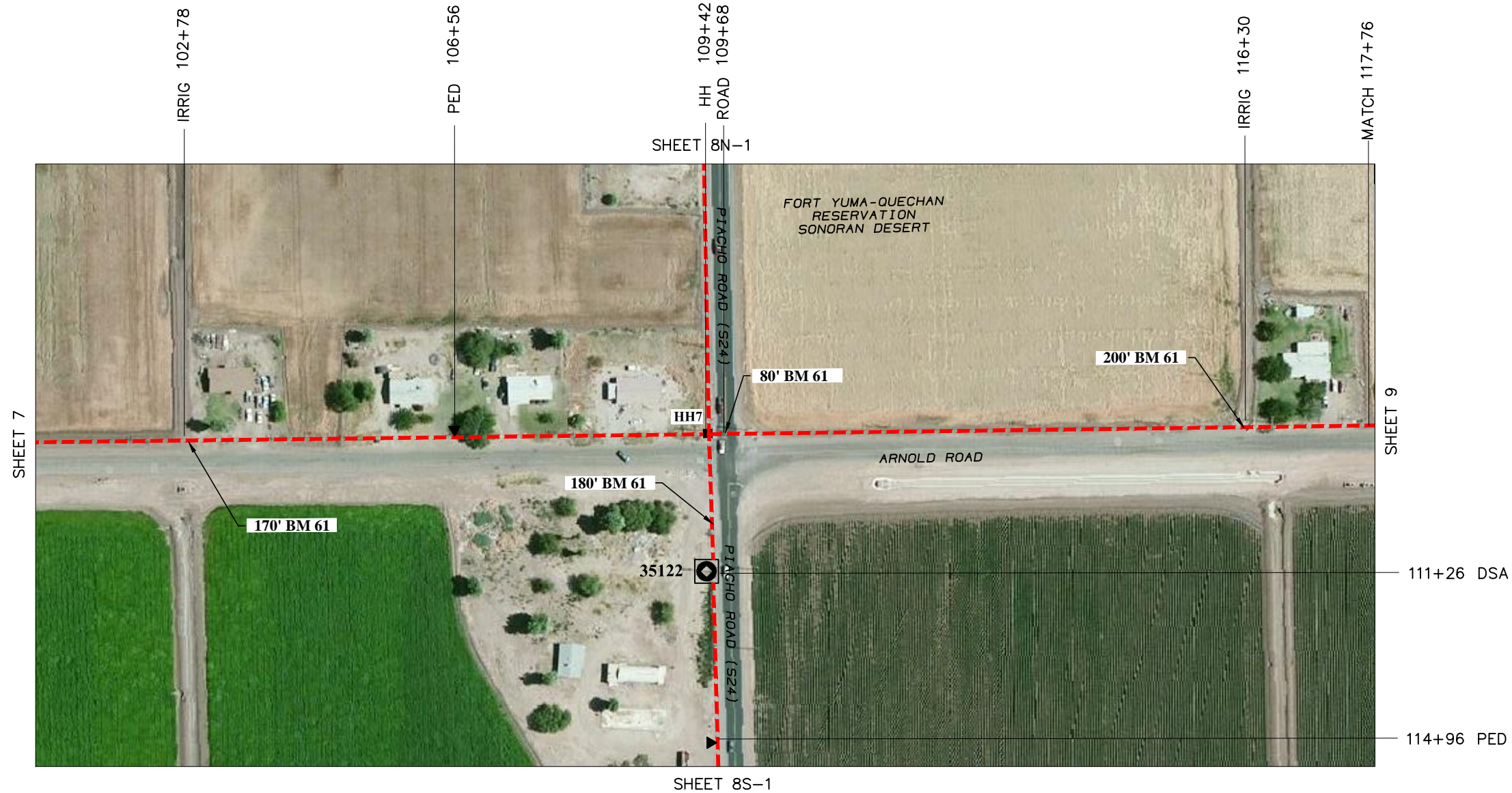


NOT TO SCALE

UNDERGROUND UTILITIES HAVE BEEN PLOTTED FROM FIELD OBSERVATIONS BUT ARE NOT NECESSARILY EXACT. IT IS THE CONTRACTORS RESPONSIBILITY TO FIELD LOCATE ALL UNDERGROUND OBSTRUCTIONS AND UTILITIES PRIOR TO CONSTRUCTION. COMPLETE REPAIR OF ANY AND ALL DAMAGES INCURRED SHALL BE AT THE EXPENSE OF THE CONTRACTOR.



POLES / PEDS				CABLE								POLE LINE & PED HARDWARE										CUST NO.			
POLE/ PED NO.		BD / HA	BG / PG	LEAD ANGLE	POLE LENGTH CLASS	YEAR		JOINT		BFO (96)	BFOI (96)	BFOV (1)(1.25)	BM2 (5/8)(8)	BM 53	BM 61D										
TEL CO.	FOR CO.					SET	REM	%	W/																
84+00	MATCH														180										
90+02	IRRIG														180										
95+94	IRRIG												1	180											
100+55	MATCH									1704	1704														
TOTAL										1704	1704		1	360											



SHEET 8 OF 27
EX. ROUTE AL
MAP REF. 351027
COUNTY: IMPERIAL
TOWNSHIP:
TAX DISTRICT:
MUNICIPALITY: WINTERHAVEN
TWN/RGE 16S / 22E
SEC. 21
STAKED BY FARR
DATE 01/14
DRAFTED BY FARR
DATE 10/14
W.O. TC-CA351ENG-001
REV
REV
REV
FILE:

111+26 DSA

114+96 PED

NOT TO SCALE

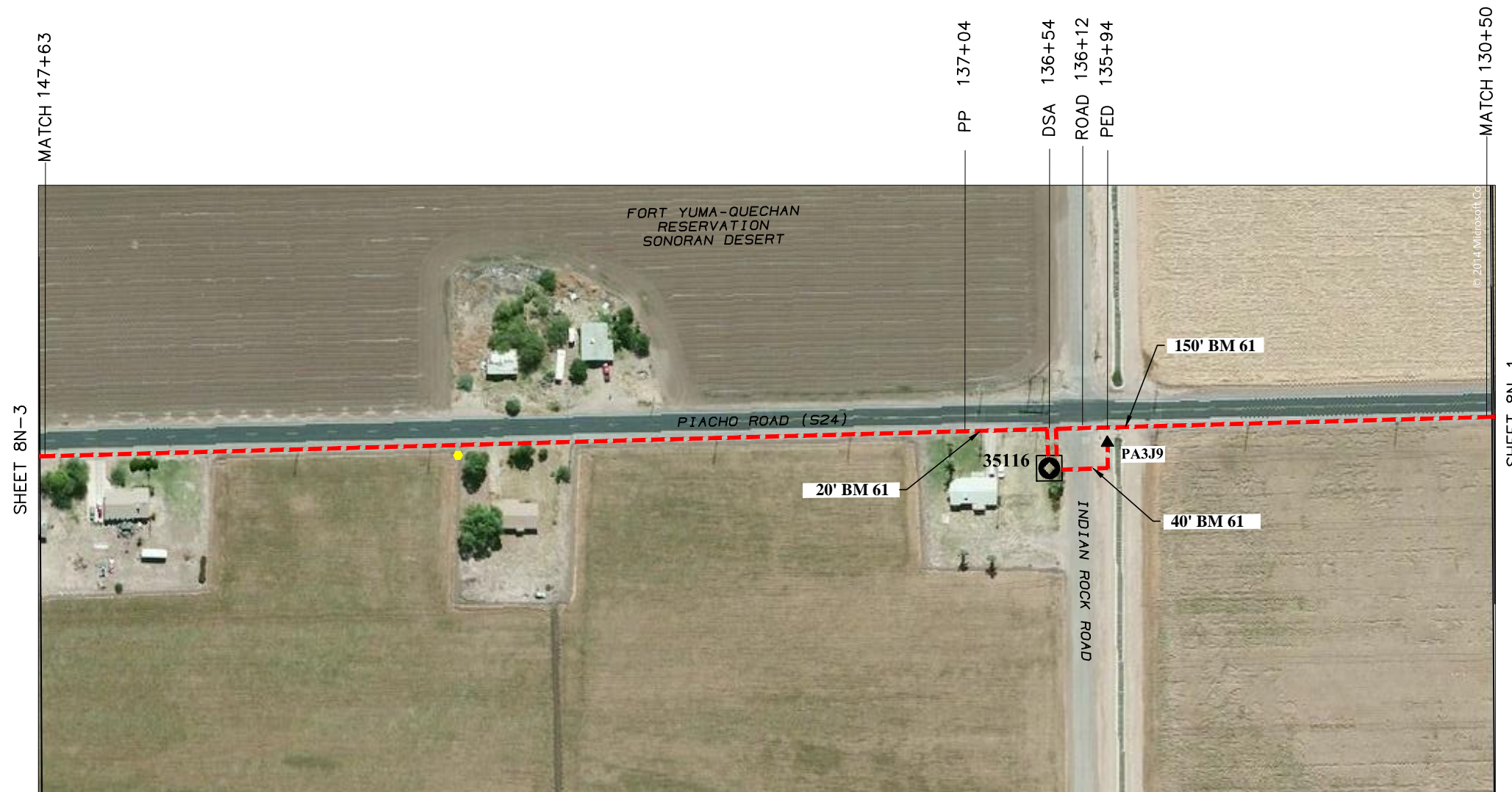


RUNNING LINE = 6'
FROM EDGE PVMT
MIN DEPTH = 36"

UNDERGROUND UTILITIES HAVE BEEN PLOTTED FROM FIELD OBSERVATIONS BUT ARE NOT NECESSARILY EXACT. IT IS THE CONTRACTORS RESPONSIBILITY TO FIELD LOCATE ALL UNDERGROUND OBSTRUCTIONS AND UTILITIES PRIOR TO CONSTRUCTION. COMPLETE REPAIR OF ANY AND ALL DAMAGES INCURRED SHALL BE AT THE EXPENSE OF THE CONTRACTOR.



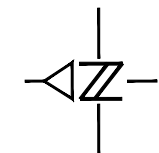
POLES / PEDS				CABLE											POLE LINE & PED HARDWARE										CUST NO.	HBFO (96)	H01	HC1	W BD
TEL CO.	FOR CO.	BD / HA	BG / PG	LEAD ANGLE	POLE LENGTH CLASS	YEAR		JOINT		BFO (96)	BFOI (96)	BFOV (1)(1.25)	BFOV (3)(1.25)	BFC 400-24	BM2 (5/8)(8)	BM 2C	BM 20	BM 53	BM 61D										
100+55	MATCH																		170										
109+42	HH	BH4 / BD3								100 / 50	914	914			1			1											
111+26	DSA									50/50/50	190	190	190				1			1	72	400							
114+96	PA3J1													250		1							400	1					
109+68	ROAD																		80										
117+76	MATCH										860	860							200										
TOTAL		1 / 1								300	2344	1774	190	250	1	1	1	1	630	1	72	800	1						



SHEET	8N-2 OF 27
EX. ROUTE	AJ
MAP REF.	351027
COUNTY:	IMPERIAL
TOWNSHIP:	
TAX DISTRICT:	
MUNICIPALITY:	WINTERHAVEN
TWN/RGE	16S / 22E
SEC.	21
STAKED BY	FARR
DATE	01/14
DRAFTED BY	FARR
DATE	10/14
W.O.	TC-CA351ENG-001
REV	
REV	
REV	
FILE:	



**RUNNING LINE = 6'
FROM EDGE PVMT
MIN DEPTH= 36"**



NOT TO SCALE

UNDERGROUND UTILITIES HAVE BEEN PLOTTED FROM FIELD OBSERVATIONS BUT ARE NOT NECESSARILY EXACT. IT IS THE CONTRACTORS RESPONSIBILITY TO FIELD LOCATE ALL UNDERGROUND OBSTRUCTIONS AND UTILITIES PRIOR TO CONSTRUCTION. COMPLETE REPAIR OF ANY AND ALL DAMAGES INCURRED SHALL BE AT THE EXPENSE OF THE CONTRACTOR.



POLES / PEDS				CABLE											POLE LINE & PED HARDWARE											CUST NO.	HBFO (96)	H01	HC1	W BD
POLE/ PED NO.	BD / HA	BG / PG	LEAD ANGLE	POLE LENGTH CLASS	YEAR				JOINT				BFO (96)	BFOI (96)	BFOV (1)(1.25)	BFOV (2)(1.25)	BFC 100-24	BM2 (5/8)(8)	BM 2C	BM 20	BM 53	BM 61D								
TEL CO.	FOR CO.				SET	REM	%	W/																						
130+50	MATCH																			150										
136+54	DSA									50 / 50	660	660						1								1	6	100		
135+94	PED													120			1			40								100	1	
137+04	PP										120		120							20										
147+63	MATCH										1090	1090							1											
TOTAL											100	1870	1750	120	120		1	1	1	210							1	6	200	1

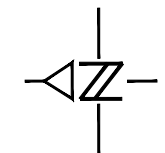


Image courtesy of USGS © 2015 Microsoft Corporation

SHEET 8N-4

**RUNNING LINE = 6'
FROM EDGE PVMT
MIN DEPTH= 36"**

UNDERGROUND UTILITIES HAVE BEEN PLOTTED FROM FIELD OBSERVATIONS BUT ARE NOT NECESSARILY EXACT. IT IS THE CONTRACTORS RESPONSIBILITY TO FIELD LOCATE ALL UNDERGROUND OBSTRUCTIONS AND UTILITIES PRIOR TO CONSTRUCTION. COMPLETE REPAIR OF ANY AND ALL DAMAGES INCURRED SHALL BE AT THE EXPENSE OF THE CONTRACTOR.



NOT TO SCALE

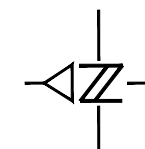


SHEET	8N-5 OF 27
EX. ROUTE	AJ/AK
MAP REF.	351026
COUNTY:	IMPERIAL
TOWNSHIP:	
TAX DISTRICT:	
MUNICIPALITY:	WINTERHAVEN
TWN/RGE	16S / 22E
SEC.	21
STAKED BY	FARR
DATE	01/14
DRAFTED BY	FARR
DATE	10/14
W.O.	TC-CA351ENG-001
REV	
REV	
REV	
FILE:	

POLES / PEDS				CABLE								POLE LINE & PED HARDWARE								CUST NO.	HBFO (96)	H01	HC1	W BD								
TEL CO.	FOR CO.	BD / HA	BG / PG	LEAD ANGLE	POLE LENGTH CLASS	YEAR		JOINT		BFO (96)	BFOI (96)	BFOV (1)(1.25)	BFC 100-24	BM2 (5/8)(8)	BM 2C	BM 20	BM 53F	BM 61D														
181+72	MATCH																															
188+75	ROAD										724	724					1	190														
189+00	PED														1																	
196+50	DSA									50	800	800	840			1										1	6	100				
TOTAL										50	1524	1524	840		1	1	1	190							1	6	200					1



RUNNING LINE = 6'
FROM EDGE PVMT
MIN DEPTH= 36"



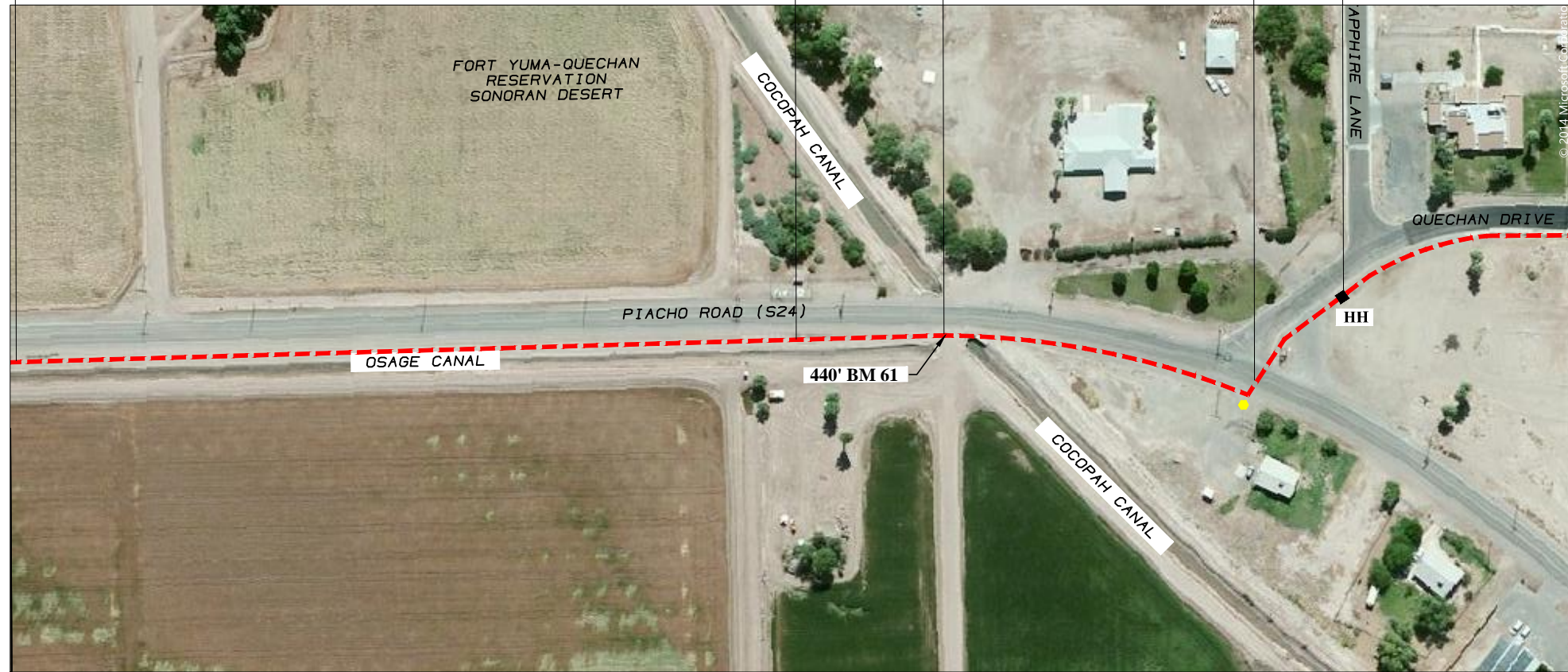
NOT TO SCALE

UNDERGROUND UTILITIES HAVE BEEN PLOTTED FROM FIELD OBSERVATIONS BUT ARE NOT NECESSARILY EXACT. IT IS THE CONTRACTORS RESPONSIBILITY TO FIELD LOCATE ALL UNDERGROUND OBSTRUCTIONS AND UTILITIES PRIOR TO CONSTRUCTION. COMPLETE REPAIR OF ANY AND ALL DAMAGES INCURRED SHALL BE AT THE EXPENSE OF THE CONTRACTOR.



POLES / PEDS				CABLE								POLE LINE & PED HARDWARE										CUST NO.
POLE/ PED NO.		BD / HA	BG / PG	LEAD ANGLE	POLE LENGTH CLASS	YEAR			JOINT		BFO (96)	BFOI (96)	BFOV (1)(1.25)	BM2 (5/8)(8)	BM 53	BM 61D						
TEL CO.	FOR CO.					SET	REM	%	W/													
130+90	MATCH																					
146+88	MATCH											1646	1646		1							
TOTAL												1646	1646		1							

MATCH 146+88
SHEET 8S-2

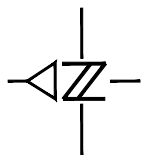


SHEET 8S-4

SHEET	8S-3 OF 27
EX. ROUTE	09-1000
MAP REF.	351006
COUNTY:	IMPERIAL
TOWNSHIP:	
TAX DISTRICT:	
MUNICIPALITY:	WINTERHAVEN
TWN/RGE	16S / 22E
SEC.	21
STAKED BY	FARR
DATE	01/14
DRAFTED BY	FARR
DATE	10/14
W.O.	TC-CA351ENG-001
REV	
REV	
REV	
FILE:	



RUNNING LINE = 6'
FROM EDGE PVMT
MIN DEPTH= 36"

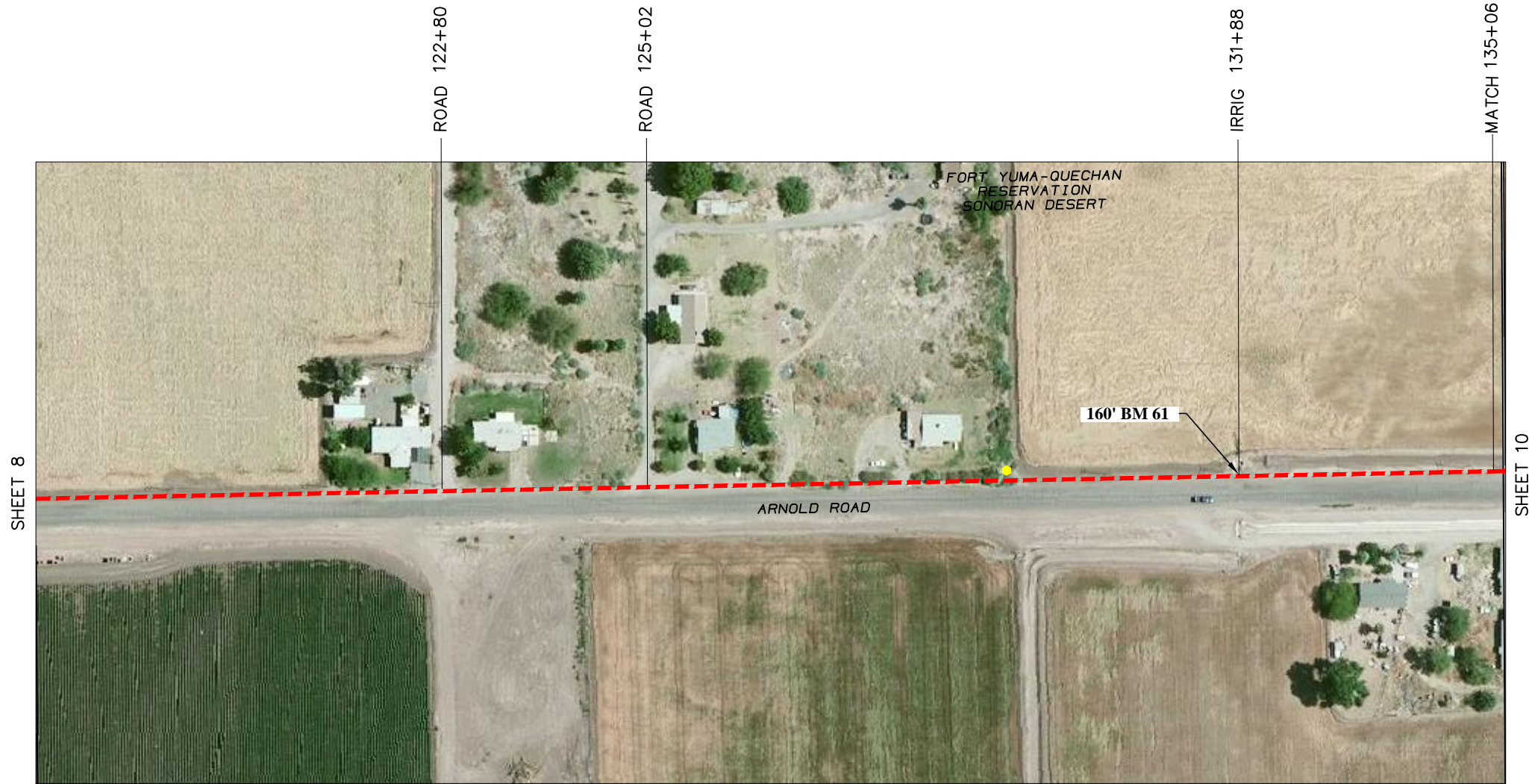


NOT TO SCALE

UNDERGROUND UTILITIES HAVE BEEN PLOTTED FROM FIELD OBSERVATIONS BUT ARE NOT NECESSARILY EXACT. IT IS THE CONTRACTORS RESPONSIBILITY TO FIELD LOCATE ALL UNDERGROUND OBSTRUCTIONS AND UTILITIES PRIOR TO CONSTRUCTION. COMPLETE REPAIR OF ANY AND ALL DAMAGES INCURRED SHALL BE AT THE EXPENSE OF THE CONTRACTOR.



POLES / PEDS				CABLE									POLE LINE & PED HARDWARE										CUST NO.
POLE / PED NO.		BD / HA	BG / PG	LEAD ANGLE	POLE LENGTH CLASS	YEAR				BFO (96)	BFOI (96)	BFOV (1)(1.25)	BM2 (5/8)(8)	BM 53	BM 61D								
TEL CO.	FOR CO.					SET	REM	%	W/														
146+88	MATCH																						
162+30	HH	BH2 / BD3							100	1590	1590		1	1	440								
TOTAL		1 / 1							100	1590	1590		1	1	440								



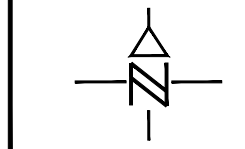
RUNNING LINE = 6'
FROM EDGE PVMT
MIN DEPTH = 36"



UNDERGROUND UTILITIES HAVE BEEN PLOTTED FROM FIELD OBSERVATIONS BUT ARE NOT NECESSARILY EXACT. IT IS THE CONTRACTOR'S RESPONSIBILITY TO FIELD LOCATE ALL UNDERGROUND OBSTRUCTIONS AND UTILITIES PRIOR TO CONSTRUCTION. COMPLETE REPAIR OF ANY AND ALL DAMAGES INCURRED SHALL BE AT THE EXPENSE OF THE CONTRACTOR.



NOT TO SCALE



FILE:

REV

REV

REV

W.O. TC-CA351ENG-001

DATE 10/14

DRAFTED BY FARR

DATE 01/14

STAKED BY FARR

SEC. 21

TWN/RGE 16S / 22E

MUNICIPALITY:
WINTERHAVEN

TAX DISTRICT:

TOWNSHIP:

COUNTY:
IMPERIAL

EX. ROUTE AA

SHEET 9 OF 27

POLES / PEDS				CABLE								POLE LINE & PED HARDWARE								CUST NO.
POLE/ PED NO.		BD / HA	BG / PG	LEAD ANGLE	POLE LENGTH CLASS	YEAR		JOINT		BFO (96)	BFOI (96)	BFOV (1)(1.25)	BM2 (5/8)(8)	BM 53	BM 61D					
TEL CO.	FOR CO.					SET	REM	%	W/											
109+42	(HH)																			
135+06	MATCH									2640	2640			1	160					
TOTAL										2640	2640			1	160					

315+47 MATCH

MATCH 305+56

SHEET 20-1

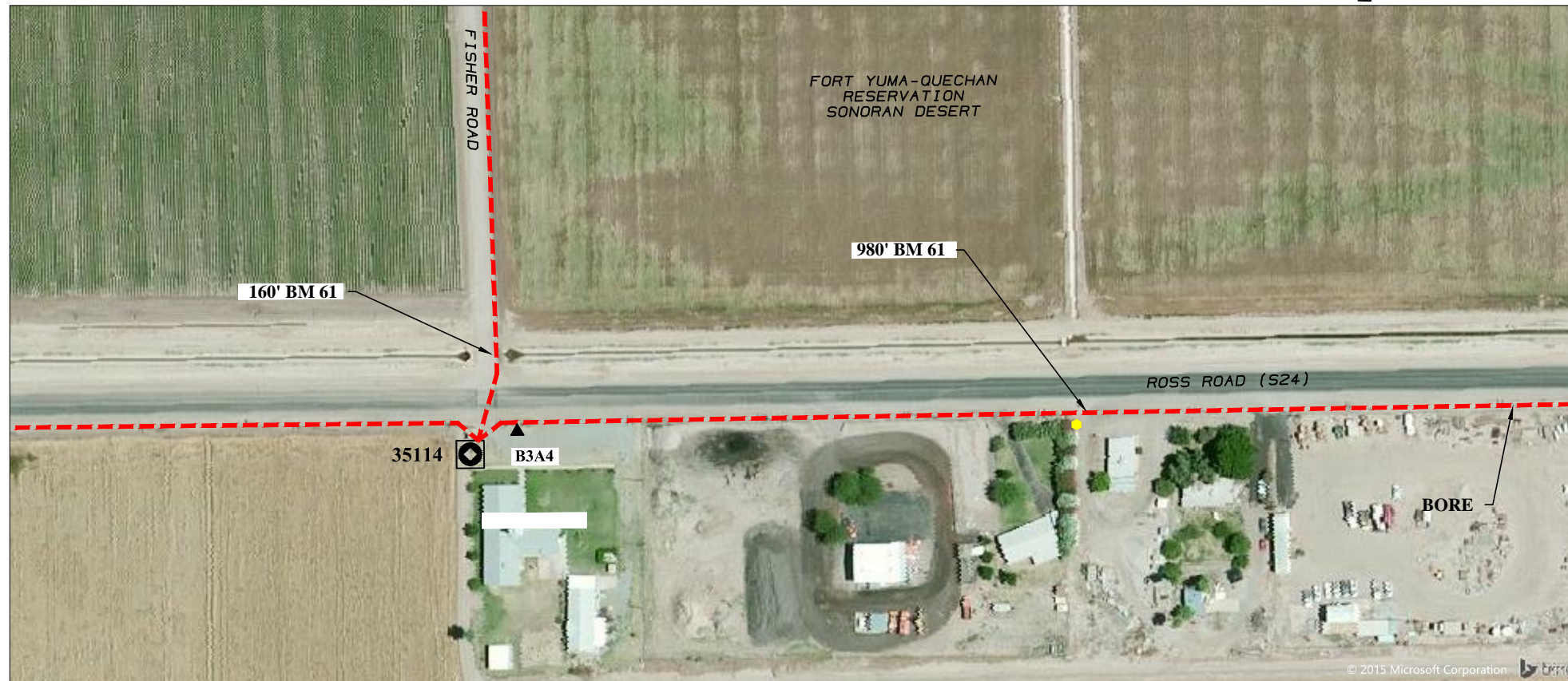
310+59 DSA
311+10 PP

END BORE 320+39

MATCH 322+68

311+71 IRRIG.

SHEET 19



RUNNING LINE = 6'
FROM EDGE PVMT
MIN DEPTH= 36"



UNDERGROUND UTILITIES HAVE BEEN PLOTTED FROM FIELD OBSERVATIONS BUT ARE NOT NECESSARILY EXACT. IT IS THE CONTRACTORS RESPONSIBILITY TO FIELD LOCATE ALL UNDERGROUND OBSTRUCTIONS AND UTILITIES PRIOR TO CONSTRUCTION. COMPLETE REPAIR OF ANY AND ALL DAMAGES INCURRED SHALL BE AT THE EXPENSE OF THE CONTRACTOR.



NOT TO SCALE



POLES / PEDS				CABLE						POLE LINE & PED HARDWARE						CUST NO.	HBFO (96)	H01	HC1	W BD
POLE/ PED NO.	BD / HA	BG / PG	LEAD ANGLE	POLE LENGTH CLASS	YEAR		JOINT		BFO (96)	BFOI (96)	BFOV (1)(1.25)	BFC 100-24	BM2 (5/8)(8)	BM 2C	BM 20					
TEL CO.	FOR CO.				SET	REM	%	W/												
305+56	MATCH																			
310+59	DSA								100	560	560				1					
	B3A4											110		1						
322+68	MATCH									1290	1290					980				
315+37	MATCH								50	550	550					160				
TOTAL									150	2400	2400	110		1	1	1140				
																	1	24	200	1



396+94 MATCH
396+02 IRRIG

SHEET 20-6

TURN 391+94

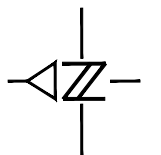
MATCH 383+80

SHEET 20-4



RUNNING LINE = 6'
FROM EDGE PVMT
MIN DEPTH= 36"

UNDERGROUND UTILITIES HAVE BEEN PLOTTED FROM FIELD OBSERVATIONS BUT ARE NOT NECESSARILY EXACT. IT IS THE CONTRACTORS RESPONSIBILITY TO FIELD LOCATE ALL UNDERGROUND OBSTRUCTIONS AND UTILITIES PRIOR TO CONSTRUCTION. COMPLETE REPAIR OF ANY AND ALL DAMAGES INCURRED SHALL BE AT THE EXPENSE OF THE CONTRACTOR.



NOT TO SCALE



POLES / PEDS				CABLE								POLE LINE & PED HARDWARE								CUST NO.
POLE/ PED NO.		BD / HA	BG / PG	LEAD ANGLE	POLE LENGTH CLASS	YEAR		JOINT		BFO (96)	BFOI (96)	BFOV (1)(1.25)	BM2 (5/8)(8)	BM 53	BM 61D					
TEL CO.	FOR CO.					SET	REM	%	W/											
383+80	MATCH																			
396+94	MATCH									1360	1360			150						
TOTAL											1360	1360			150					

322+68

330+42

333+87

334+53

336+96

339+90

ROAD

IRRIG

ROAD

IRRIG

MATCH

SHEET 20

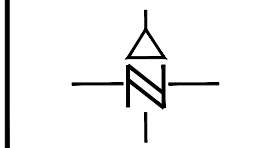
SHEET 22



RUNNING LINE = 6'
FROM EDGE PVMT
MIN DEPTH= 36"



UNDERGROUND UTILITIES HAVE BEEN PLOTTED FROM FIELD OBSERVATIONS BUT ARE NOT NECESSARILY EXACT. IT IS THE CONTRACTORS RESPONSIBILITY TO FIELD LOCATE ALL UNDERGROUND OBSTRUCTIONS AND UTILITIES PRIOR TO CONSTRUCTION. COMPLETE REPAIR OF ANY AND ALL DAMAGES INCURRED SHALL BE AT THE EXPENSE OF THE CONTRACTOR.



NOT TO SCALE



POLES / PEDS				CABLE								POLE LINE & PED HARDWARE								CUST NO.
POLE/ PED NO.		BD / HA	BG / PG	LEAD ANGLE	POLE LENGTH CLASS	YEAR				BFO (96)	BFOI (96)	BFOV (1)(1.25)	BM2 (5/8)(8)	BM 53	BM 61D					
TEL CO.	FOR CO.					SET	REM	%	W/											
322+68	MATCH																			
															480					
339+90	MATCH									1766	1766			1						
TOTAL										1766	1766		1	480						

MATCH 374+16

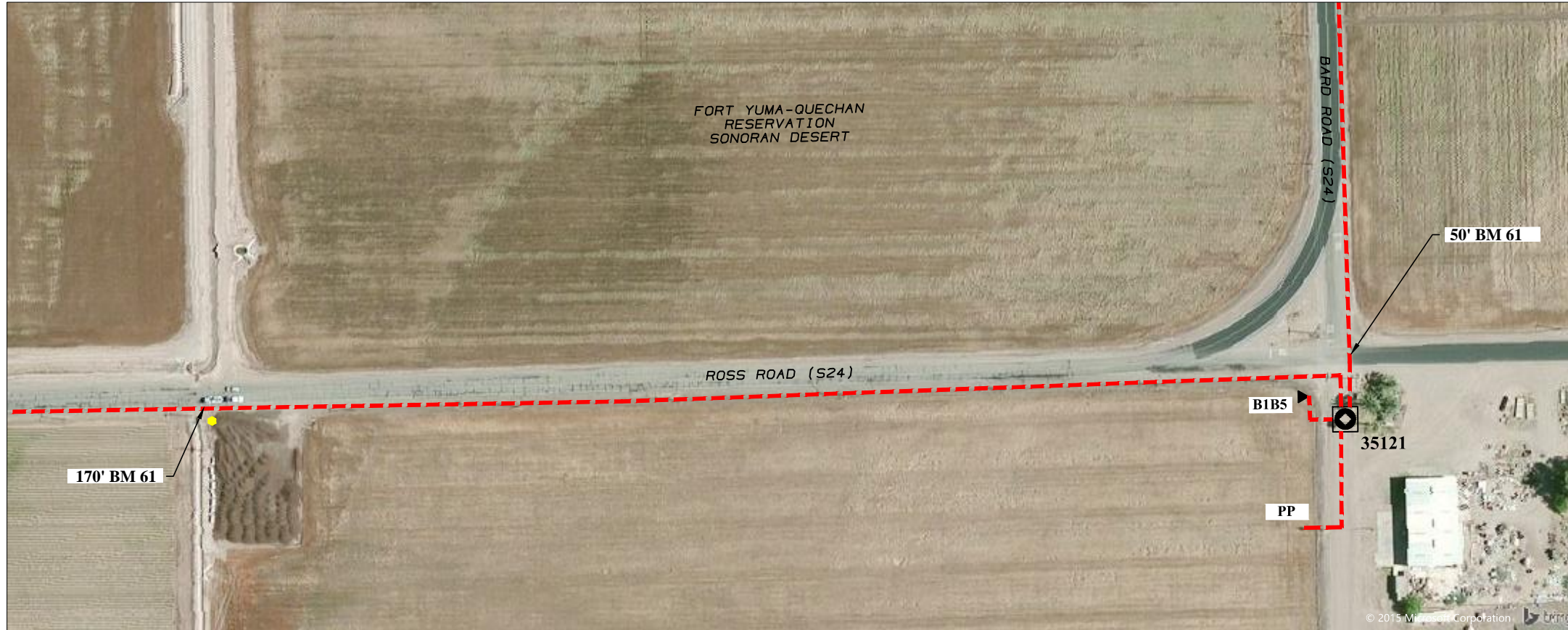
IRRIG 376+45

SHEET 25

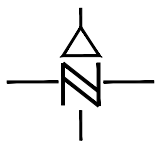
ROAD 389+99

MATCH 397+19

DSA 390+25



RUNNING LINE = 6'
FROM EDGE PVMT
MIN DEPTH= 36"



NOT TO SCALE

UNDERGROUND UTILITIES HAVE BEEN PLOTTED FROM FIELD OBSERVATIONS BUT ARE NOT NECESSARILY EXACT. IT IS THE CONTRACTORS RESPONSIBILITY TO FIELD LOCATE ALL UNDERGROUND OBSTRUCTIONS AND UTILITIES PRIOR TO CONSTRUCTION. COMPLETE REPAIR OF ANY AND ALL DAMAGES INCURRED SHALL BE AT THE EXPENSE OF THE CONTRACTOR.



POLES / PEDS				CABLE								POLE LINE & PED HARDWARE								CUST NO.	HBFO (96)	H01	HC1	WBD									
POLE/ PED NO.		BD / HA	BG / PG	LEAD ANGLE	POLE LENGTH CLASS	YEAR				BFO (96)	BFOI (96)	BFOV (1)(1.25)	BFC 100-24	BM2 (5/8)(8)	BM 20	BM 53	BM 61D																
TEL CO.	FOR CO.					SET	REM	%	W/																								
374+16	MATCH																																
390+25	DSA								100	1700	1700			1	1	170									1	6	100						
	B1B5											110																					
	PP											180																					
397+19	MATCH											780																					
TOTAL									100	2480	2660	110		1	1	170										1	6	200					1

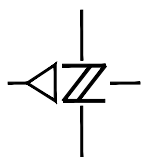
MATCH 428+83

ROAD 417+19
IRRIG 416+23

MATCH 411+79



RUNNING LINE = 6'
FROM EDGE PVMT
MIN DEPTH= 36"



NOT TO SCALE

UNDERGROUND UTILITIES HAVE BEEN PLOTTED FROM FIELD OBSERVATIONS BUT ARE NOT NECESSARILY EXACT. IT IS THE CONTRACTORS RESPONSIBILITY TO FIELD LOCATE ALL UNDERGROUND OBSTRUCTIONS AND UTILITIES PRIOR TO CONSTRUCTION. COMPLETE REPAIR OF ANY AND ALL DAMAGES INCURRED SHALL BE AT THE EXPENSE OF THE CONTRACTOR.



POLES / PEDS			CABLE									POLE LINE & PED HARDWARE						CUST. NO.
POLE / PED NO.		BD / HA	BG / PG	LEAD ANGLE	POLE LENGTH CLASS	YEAR				BFO (96)	BFOI (96)	BFOV (1)(1.25)	BM2 (5/8)(8)	BM 53	BM 61D			
TEL CO.	FOR CO.					SET	REM	%	W/									
411+79	MATCH																	
428+83	MATCH								1760	1760			1	170				
TOTAL										1760	1760		1	170				

