

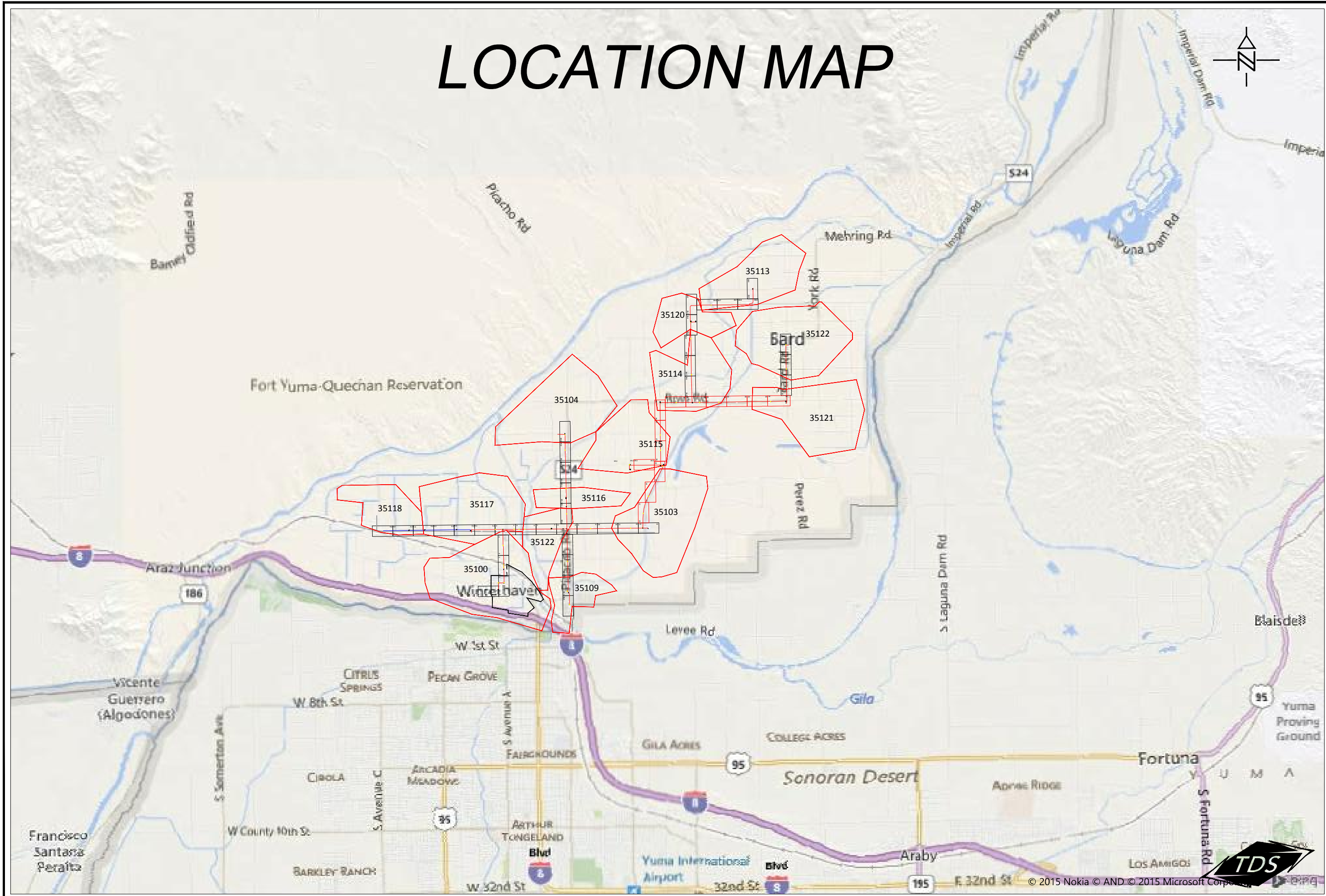
# **Appendix B**

## **Project Plans**

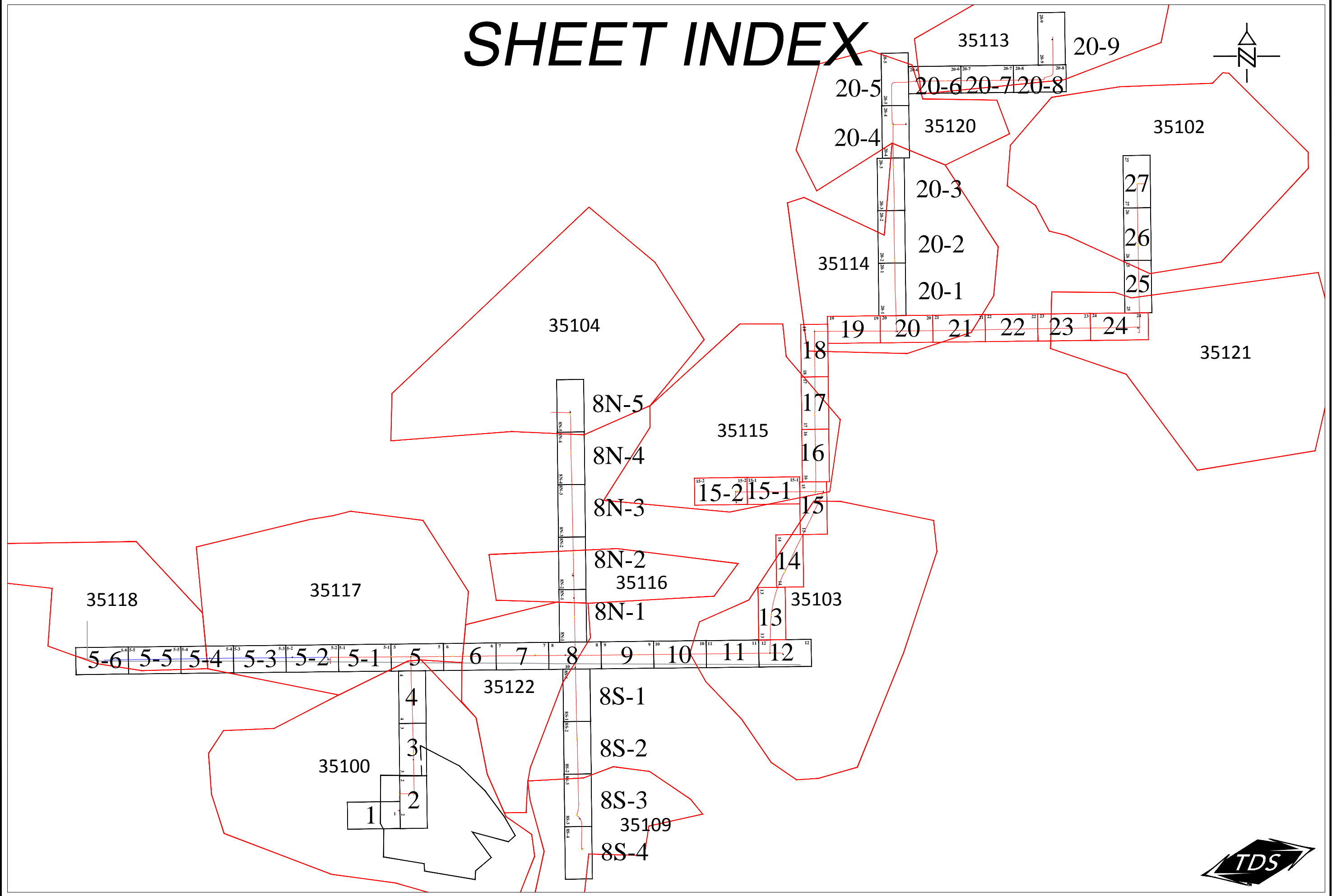
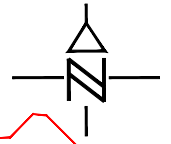
---



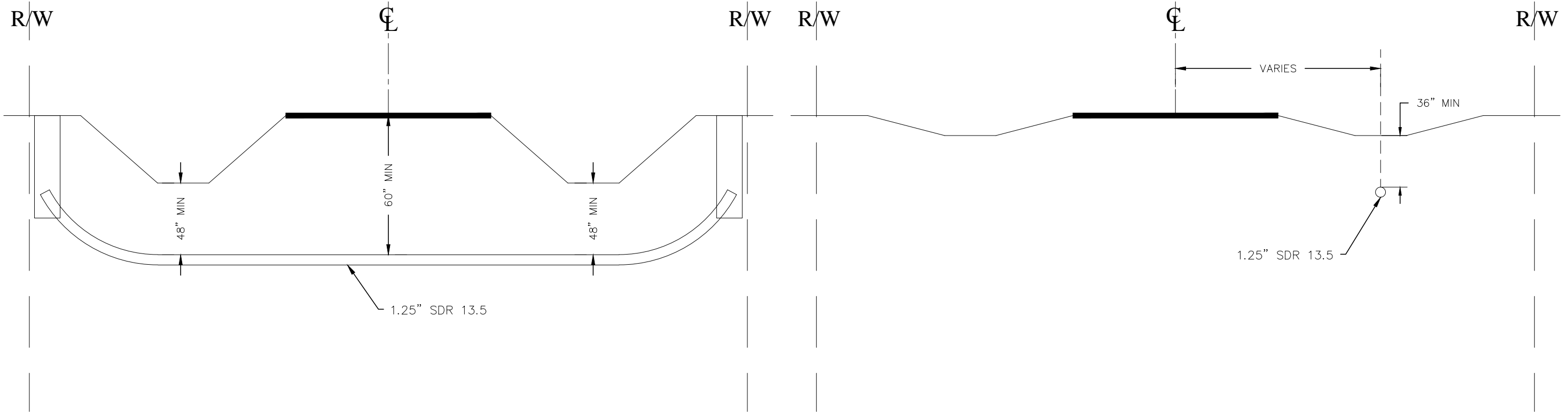
# LOCATION MAP



# SHEET INDEX



# TYPICAL SECTIONS



**TYPICAL BORE PROFILE**

**TYPICAL PARALLEL PROFILE**

**NOTES:**

1. Crossing will be made utilizing directional bore methodology.
2. Depth to top of duct will be a minimum of forty-eight inches (48") below bottom of ditch
3. Depth to top of duct will be a minimum of sixty inches (60") below hard road surface, bottom of waterway or irrigation ditch.
4. Entry and Exit locations on each side of roadway will be dug down to depth of running line as required and care will be taken to return pits to original or better condition.

**NOTES:**

1. Minimum depth from ground to top of duct will be 36"
2. Placement shall be by directional bore, plow or trench methodology
3. When trenching or plowing, warning tape shall be placed 12" above top of duct
4. Running line shown on sheets subject to change due to location of existing utilities

NOT TO SCALE



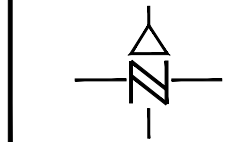


SHEET 2

RUNNING LINE = 3'  
FROM EDGE PVMT  
MIN DEPTH= 36"



UNDERGROUND UTILITIES HAVE BEEN PLOTTED FROM FIELD OBSERVATIONS BUT ARE NOT NECESSARILY EXACT. IT IS THE CONTRACTORS RESPONSIBILITY TO FIELD LOCATE ALL UNDERGROUND OBSTRUCTIONS AND UTILITIES PRIOR TO CONSTRUCTION. COMPLETE REPAIR OF ANY AND ALL DAMAGES INCURRED SHALL BE AT THE EXPENSE OF THE CONTRACTOR.



NOT TO SCALE



POLES / PEDS				CABLE									POLE LINE & PED HARDWARE				CUST NO.	HBFO (96)	H01	W UM
POLE/ PED NO.	BD / HA	BG / PG	LEAD ANGLE	POLE LENGTH CLASS	YEAR				JOINT			BFO (96)	BFOIE (96)	BFOV (1)(1.25)	BM2 (5/8)(8)	BM 21				
TEL CO.	FOR CO.				SET	REM	%	W/												
0+00	CO									100					1					
0+64	MH										64									
TOTAL										100	64				1					

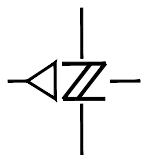


SHEET 3

SHEET 1

RUNNING LINE = 3'- 6'  
FROM EDGE PVMT  
MIN DEPTH= 36"

SHEET 2 OF 27
EX. ROUTE DA
MAP REF. 351002
COUNTY: IMPERIAL
TOWNSHIP:
TAX DISTRICT:
MUNICIPALITY: WINTERHAVEN
TWN/RGE 16S/ 22E
SEC. 21
STAKED BY FARR
DATE 01/14
DRAFTED BY FARR
DATE 10/14
W.O. TC-CA351ENG-001
REV
REV
REV
FILE:



NOT TO SCALE



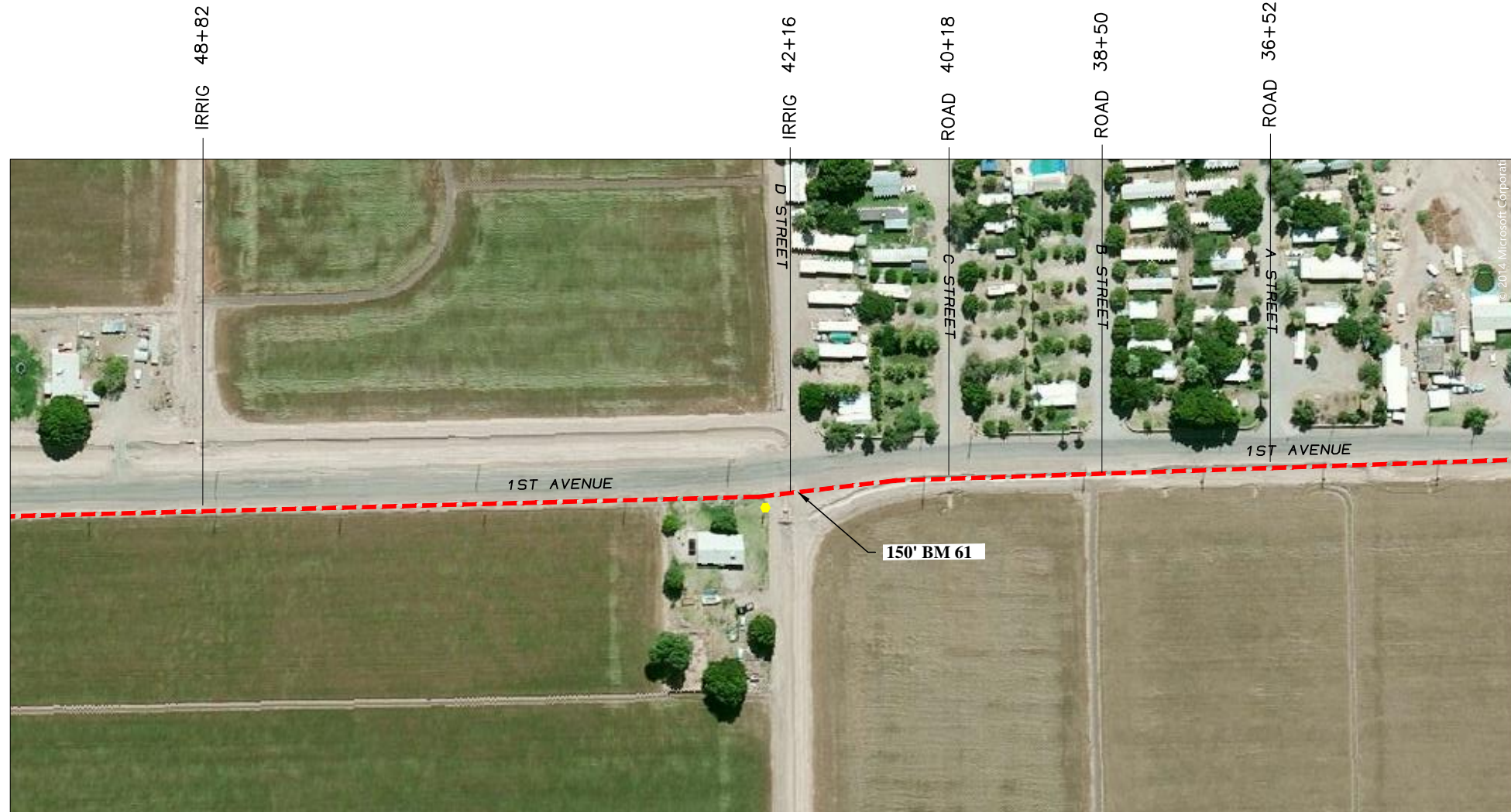
UNDERGROUND UTILITIES HAVE BEEN PLOTTED FROM FIELD OBSERVATIONS BUT ARE NOT NECESSARILY EXACT. IT IS THE CONTRACTORS RESPONSIBILITY TO FIELD LOCATE ALL UNDERGROUND OBSTRUCTIONS AND UTILITIES PRIOR TO CONSTRUCTION. COMPLETE REPAIR OF ANY AND ALL DAMAGES INCURRED SHALL BE AT THE EXPENSE OF THE CONTRACTOR.



POLES / PEDS				CABLE								POLE LINE & PED HARDWARE										CUST NO.
TEL CO.	FOR CO.	BD / HA	BG / PG	LEAD ANGLE	POLE LENGTH CLASS	YEAR		JOINT		BFO (24)	BFOI (96)	BFOV (1)(1.25)	BM2 (5/8)(8)	BM 53	BM 61D							
0+64	SHT 1																					
6+34	HH1	BH2								610	610		1	610								
11+12	HH2	BH2								512	512		1	512								
15+74	Lateral									496	496			496								
TOTAL		2								1618	1618		2	1618								

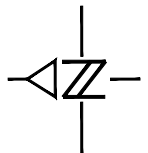






SHEET 4 OF 27
EX. ROUTE HA
MAP REF. 351009/351027
COUNTY: IMPERIAL
TOWNSHIP:
TAX DISTRICT:
MUNICIPALITY: WINTERHAVEN
TWN/RGE 16S / 22E
SEC. 21
STAKED BY FARR
DATE 01/14
DRAFTED BY FARR
DATE 10/14
W.O. TC-CA351ENG-001
REV
REV
REV
FILE:

RUNNING LINE = 6'  
FROM EDGE PVMT  
MIN DEPTH= 36"



NOT TO SCALE



UNDERGROUND UTILITIES HAVE BEEN PLOTTED FROM FIELD OBSERVATIONS BUT ARE NOT NECESSARILY EXACT. IT IS THE CONTRACTORS RESPONSIBILITY TO FIELD LOCATE ALL UNDERGROUND OBSTRUCTIONS AND UTILITIES PRIOR TO CONSTRUCTION. COMPLETE REPAIR OF ANY AND ALL DAMAGES INCURRED SHALL BE AT THE EXPENSE OF THE CONTRACTOR.



POLES / PEDS				CABLE							POLE LINE & PED HARDWARE							CUST NO.	
POLE / PED NO.		BD / HA	BG / PG	LEAD ANGLE	POLE LENGTH CLASS	YEAR				BFO (96)	BFOI (96)	BFOV (1)(1.25)	BM2 (5/8)(8)	BM 53	BM 61D				
TEL CO.	FOR CO.					SET	REM	%	W/										
28+98	SHT 3																		
42+16	IRRIG									1358	1358		1	150					
48+82	IRRIG									706	706								
TOTAL										2064	2064		1	150					

















PROJECT NO. 23325

TEL. CO. TDS

EXCHANGE 351

ROUTE HC/AL



SHEET 6 OF 27

EX. ROUTE HC/AL

MAP REF. 351027

COUNTY: IMPERIAL

TOWNSHIP:

TAX DISTRICT:

MUNICIPALITY: WINTERHAVEN

TWN/RGE 16S/22E

SEC. 21

STAKED BY FARR

DATE 01/14

DRAFTED BY FARR

DATE 10/14

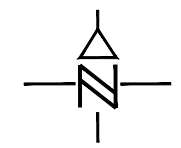
W.O. TC-CA351ENG-001

REV

REV

REV

FILE:



NOT TO SCALE

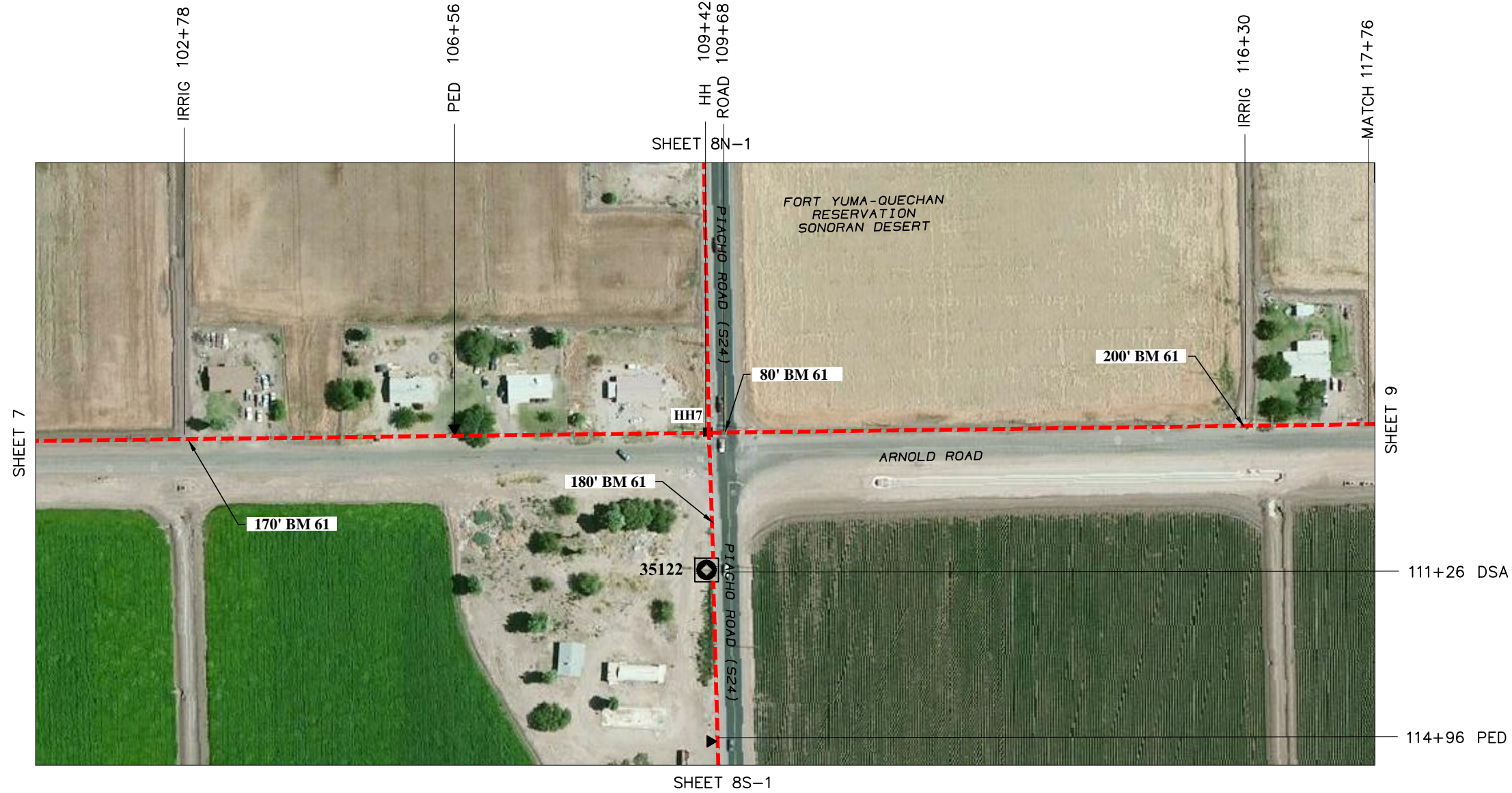


RUNNING LINE = 6'  
FROM EDGE PVMT  
MIN DEPTH= 36"

UNDERGROUND UTILITIES HAVE BEEN PLOTTED FROM FIELD OBSERVATIONS BUT ARE NOT NECESSARILY EXACT. IT IS THE CONTRACTORS RESPONSIBILITY TO FIELD LOCATE ALL UNDERGROUND OBSTRUCTIONS AND UTILITIES PRIOR TO CONSTRUCTION. COMPLETE REPAIR OF ANY AND ALL DAMAGES INCURRED SHALL BE AT THE EXPENSE OF THE CONTRACTOR.

POLE / PEDS		CABLE									POLE LINE & PED HARDWARE							CUST NO.		
TEL CO.	FOR CO.	BD / HA	BG / PG	LEAD ANGLE	POLE LENGTH CLASS	YEAR		JOINT		BFO (96)	BFOI (96)	BFOV (1)(1.25)	BM2 (5/8)(8)	BM 53	BM 61D					
						SET	REM	%	W/											
55+84	HH6																			
84+00	MATCH										2900	2900		2	1160					
TOTAL											2900	2900		2	1160					





RUNNING LINE = 6'  
FROM EDGE PVMT  
MIN DEPTH= 36"

UNDERGROUND UTILITIES HAVE BEEN PLOTTED FROM FIELD OBSERVATIONS BUT ARE NOT NECESSARILY EXACT. IT IS THE CONTRACTORS RESPONSIBILITY TO FIELD LOCATE ALL UNDERGROUND OBSTRUCTIONS AND UTILITIES PRIOR TO CONSTRUCTION. COMPLETE REPAIR OF ANY AND ALL DAMAGES INCURRED SHALL BE AT THE EXPENSE OF THE CONTRACTOR.



SHEET 8 OF 27
EX. ROUTE AL
MAP REF. 351027
COUNTY: IMPERIAL
TOWNSHIP:
TAX DISTRICT:
MUNICIPALITY: WINTERHAVEN
TWN/RGE 16S / 22E
SEC. 21
STAKED BY FARR
DATE 01/14
DRAFTED BY FARR
DATE 10/14
W.O. TC-CA351ENG-001
REV
REV
REV
FILE:

111+26 DSA
114+96 PED
NOT TO SCALE

POLES / PEDS				CABLE											POLE LINE & PED HARDWARE										CUST NO.	HBFO (96)	H01	HC1	W BD
TEL CO.	FOR CO.	BD / HA	BG / PG	LEAD ANGLE	POLE LENGTH CLASS	YEAR		JOINT		BFO (96)	BFOI (96)	BFOV (1)(1.25)	BFOV (3)(1.25)	BFC 400-24	BM2 (5/8)(8)	BM 2C	BM 20	BM 53	BM 61D										
100+55	MATCH																		170										
109+42	HH	BH4 / BD3								100 / 50	914	914			1			1											
111+26	DSA									50/50/50	190	190	190				1			1	72	400							
114+96	PA3J1													250		1							400	1					
109+68	ROAD																		80										
117+76	MATCH										860	860							200										
TOTAL		1 / 1								300	2344	1774	190	250	1	1	1	1	630	1	72	800	1						

MATCH 130+50

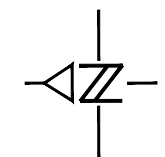
PED 128+60



SHEET 8

SHEET 8N-2

RUNNING LINE = 6'  
FROM EDGE PVMT  
MIN DEPTH= 36"



NOT TO SCALE



UNDERGROUND UTILITIES HAVE BEEN PLOTTED FROM FIELD OBSERVATIONS BUT ARE NOT NECESSARILY EXACT. IT IS THE CONTRACTORS RESPONSIBILITY TO FIELD LOCATE ALL UNDERGROUND OBSTRUCTIONS AND UTILITIES PRIOR TO CONSTRUCTION. COMPLETE REPAIR OF ANY AND ALL DAMAGES INCURRED SHALL BE AT THE EXPENSE OF THE CONTRACTOR.



POLES / PEDS				CABLE										POLE LINE & PED HARDWARE										CUST NO.
POLE/ PED NO.		BD / HA	BG / PG	LEAD ANGLE	POLE LENGTH CLASS	YEAR				BFO (96)	BFOI (96)	BFOV (1)(1.25)												
TEL CO.	FOR CO.					SET	REM	%	W/														BM2 (5/8)(8)	
109+42	(HH)																							
130+50	MATCH									2172	2172						1							
TOTAL										2172	2172						1							

MATCH 147+63  
SHEET 8N-3



MATCH 130+50  
SHEET 8N-1

SHEET 8N-2 OF 27

EX. ROUTE AJ

MAP REF. 351027

COUNTY:  
IMPERIAL

TOWNSHIP:

TAX DISTRICT:

MUNICIPALITY:  
WINTERHAVEN

TWN/RGE 16S / 22E

SEC. 21

STAKED BY FARR

DATE 01/14

DRAFTED BY FARR

DATE 10/14

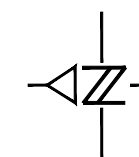
W.O. TC-CA351ENG-001

REV

REV

REV

FILE:



NOT TO SCALE

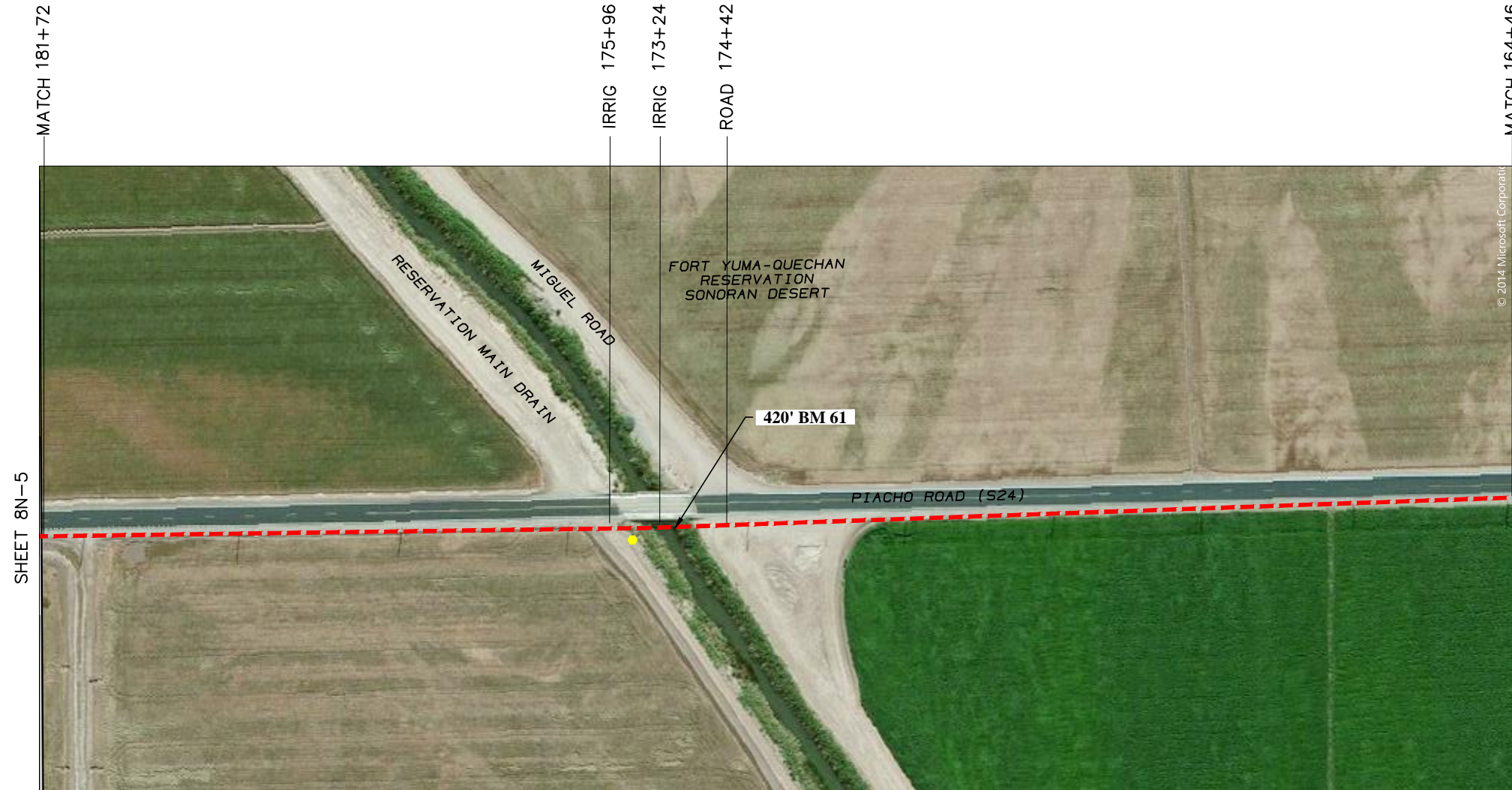


RUNNING LINE = 6'  
FROM EDGE PVMT  
MIN DEPTH= 36"

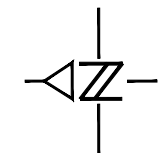
UNDERGROUND UTILITIES HAVE BEEN PLOTTED FROM FIELD OBSERVATIONS BUT ARE NOT NECESSARILY EXACT. IT IS THE CONTRACTORS RESPONSIBILITY TO FIELD LOCATE ALL UNDERGROUND OBSTRUCTIONS AND UTILITIES PRIOR TO CONSTRUCTION. COMPLETE REPAIR OF ANY AND ALL DAMAGES INCURRED SHALL BE AT THE EXPENSE OF THE CONTRACTOR.

POLES / PEDS					CABLE					POLE LINE & PED HARDWARE							CUST NO.	HBFO (96)	H01	HC1	W BD																		
TEL CO.	FOR CO.	BD / HA	BG / PG	LEAD ANGLE	POLE LENGTH CLASS	YEAR SET	YEAR REM	JOINT %	W/	BFO (96)	BFOI (96)	BFOV (1)(1.25)	BFOV (2)(1.25)	BFC 100-24	BM2 (5/8)(8)	BM 2C						BM 20	BM 53	BM 61D															
130+50	MATCH																		150																				
136+54	DSA									50 / 50	660	660					1																						
135+94	PED													120		1			40															1					
137+04	PP										120		120						20																				
147+63	MATCH										1090	1090							1																				
TOTAL											100	1870	1750	120	120		1	1	1	210																1	6	200	1





RUNNING LINE = 6'  
FROM EDGE PVMT  
MIN DEPTH= 36"



NOT TO SCALE



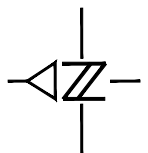
UNDERGROUND UTILITIES HAVE BEEN PLOTTED FROM FIELD OBSERVATIONS BUT ARE NOT NECESSARILY EXACT. IT IS THE CONTRACTORS RESPONSIBILITY TO FIELD LOCATE ALL UNDERGROUND OBSTRUCTIONS AND UTILITIES PRIOR TO CONSTRUCTION. COMPLETE REPAIR OF ANY AND ALL DAMAGES INCURRED SHALL BE AT THE EXPENSE OF THE CONTRACTOR.

POLES / PEDS				CABLE									POLE LINE & PED HARDWARE								CUST NO.
POLE/ PED NO.		BD / HA	BG / PG	LEAD ANGLE	POLE LENGTH CLASS	YEAR			JOINT		BFO (96)	BFOI (96)	BFOV (1)(1.25)	BM2 (5/8)(8)	BM 53	BM 61D					
TEL CO.	FOR CO.					SET	REM	%	W/												
164+46	MATCH													1	420						
181+72	MATCH										1780	1780									
TOTAL											1780	1780		1	420						



RUNNING LINE = 6'  
FROM EDGE PVMT  
MIN DEPTH= 36"

UNDERGROUND UTILITIES HAVE BEEN PLOTTED FROM FIELD OBSERVATIONS BUT ARE NOT NECESSARILY EXACT. IT IS THE CONTRACTOR'S RESPONSIBILITY TO FIELD LOCATE ALL UNDERGROUND OBSTRUCTIONS AND UTILITIES PRIOR TO CONSTRUCTION. COMPLETE REPAIR OF ANY AND ALL DAMAGES INCURRED SHALL BE AT THE EXPENSE OF THE CONTRACTOR.



SHEET	8N-5 OF 27
EX. ROUTE	AJ/AK
MAP REF.	351026
COUNTY:	IMPERIAL
TOWNSHIP:	
TAX DISTRICT:	
MUNICIPALITY:	WINTERHAVEN
TWN/RGE	16S / 22E
SEC.	21
STAKED BY	FARR
DATE	01/14
DRAFTED BY	FARR
DATE	10/14
W.O.	TC-CA351ENG-001
REV	
REV	
REV	
FILE:	

POLES / PEDS				CABLE				POLE LINE & PED HARDWARE								CUST NO.	HBFO (96)	H01	HC1	W BD									
POLE/ PED NO.		BD / HA	BG / PG	LEAD ANGLE	POLE LENGTH CLASS	YEAR JOINT				BFO (96)	BFOI (96)	BFOV (1)(1.25)	BFC 100-24	BM2 (5/8)(8)	BM 2C						BM 20	BM 53F	BM 61D						
TEL CO.	FOR CO.					SET	REM	%	W/																				
181+72	MATCH																												
188+75	ROAD									724	724					1	190											100	1
189+00	PED												1																
196+50	DSA									50	800	800	840		1								1	6	100				
TOTAL										50	1524	1524	840		1	1	1	190					1	6	200				1

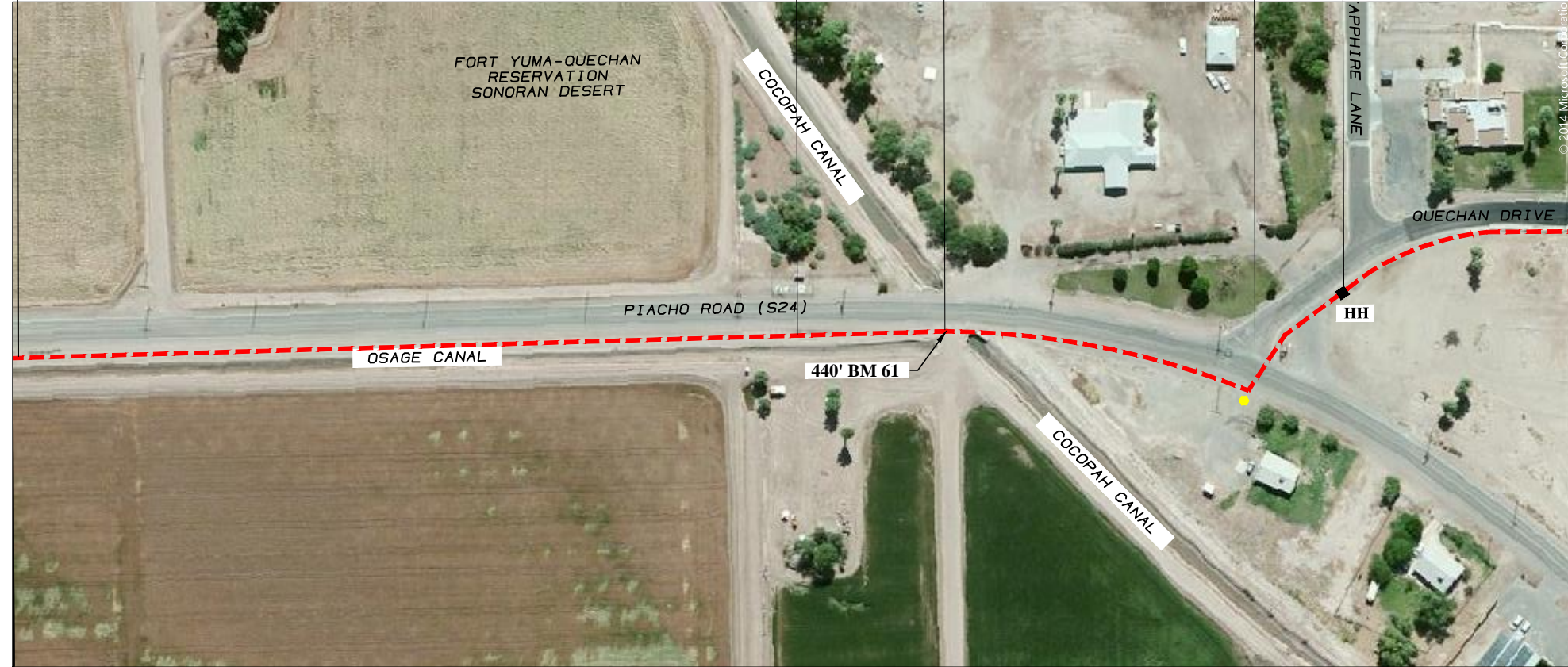






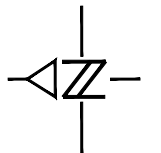
MATCH 146+88

SHEET 8S-2



SHEET 8S-4

RUNNING LINE = 6'  
FROM EDGE PVMT  
MIN DEPTH = 36"



NOT TO SCALE

UNDERGROUND UTILITIES HAVE BEEN PLOTTED FROM FIELD OBSERVATIONS BUT ARE NOT NECESSARILY EXACT. IT IS THE CONTRACTOR'S RESPONSIBILITY TO FIELD LOCATE ALL UNDERGROUND OBSTRUCTIONS AND UTILITIES PRIOR TO CONSTRUCTION. COMPLETE REPAIR OF ANY AND ALL DAMAGES INCURRED SHALL BE AT THE EXPENSE OF THE CONTRACTOR.



POLES / PEDS			CABLE										POLE LINE & PED HARDWARE							CUST NO.			
POLE / PED NO.		BD / HA	BG / PG	LEAD ANGLE	POLE LENGTH CLASS	YEAR				BFO (96)	BFOI (96)	BFOV (1)(1.25)	BM2 (5/8)(8)	BM 53	BM 61D								
TEL CO.	FOR CO.					SET	REM	%	W/														
146+88	MATCH																						
162+30	HH	BH2 / BD3								100	1590	1590	1	1	440								
TOTAL		1 / 1								100	1590	1590	1	1	440								





PROJECT NO. 23325

TEL. CO. TDS

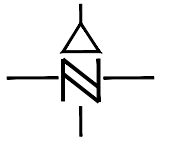
EXCHANGE 351

ROUTE AA



SHEET 10 OF 27  
EX. ROUTE AA  
MAP REF. 351031  
COUNTY: IMPERIAL  
TOWNSHIP:  
TAX DISTRICT:  
MUNICIPALITY: WINTERHAVEN

TWN/RGE 16S / 22E  
SEC. 21  
STAKED BY FARR  
DATE 01/14  
DRAFTED BY FARR  
DATE 10/14  
W.O. TC-CA351ENG-001  
REV  
REV  
REV  
FILE:



NOT TO SCALE



RUNNING LINE = 6'  
FROM EDGE PVMT  
MIN DEPTH= 36"

UNDERGROUND UTILITIES HAVE BEEN PLOTTED FROM FIELD OBSERVATIONS BUT ARE NOT NECESSARILY EXACT. IT IS THE CONTRACTORS RESPONSIBILITY TO FIELD LOCATE ALL UNDERGROUND OBSTRUCTIONS AND UTILITIES PRIOR TO CONSTRUCTION. COMPLETE REPAIR OF ANY AND ALL DAMAGES INCURRED SHALL BE AT THE EXPENSE OF THE CONTRACTOR.



POLE / PEDS		CABLE							POLE LINE & PED HARDWARE													CUST NO.	
POLE/ PED NO.	BD / HA	BC / PG	LEAD ANGLE	POLE LENGTH CLASS	YEAR		JOINT	BFO (96)	BFOI (96)	BFOV (1)(1.25)					BM2 (5/8)(8)	BM 53	BM 61D						
TEL CO.	FOR CO.			SET	REM	%	W/																
135+06	MATCH																						
152+04	MATCH								1748	1748						160							
TOTAL									1748	1748						160							

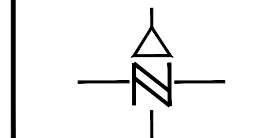




**RUNNING LINE:**  
 Arnold Road = 6' FROM EDGE PVMT  
 Cocopah Road = 3' East of Power Poles  
 MIN DEPTH= 36"



UNDERGROUND UTILITIES HAVE BEEN PLOTTED FROM FIELD OBSERVATIONS BUT ARE NOT NECESSARILY EXACT. IT IS THE CONTRACTORS RESPONSIBILITY TO FIELD LOCATE ALL UNDERGROUND OBSTRUCTIONS AND UTILITIES PRIOR TO CONSTRUCTION. COMPLETE REPAIR OF ANY AND ALL DAMAGES INCURRED SHALL BE AT THE EXPENSE OF THE CONTRACTOR.



NOT TO SCALE



POLES / PEDS				CABLE									POLE LINE & PED HARDWARE										CUST NO.	HBFO (96)	H01									
POLE/ PED NO.		BD / HA	BG / PG	LEAD ANGLE	POLE LENGTH CLASS	YEAR				BFO (96)	BFOI (96)	BFOV (1)(1.25)																						
TEL CO.	FOR CO.					SET	REM	%	W/																					BM2 (5/8)(8)	BM 20	BM 53	BM 61D	
169+04	MATCH																																	
172+80	HH 8	BH4 / BD3								50/50/50	390	390													1								1	6
177+24	DSA									50	520	520													1								1	6
177+34	EX. DSA											12																						
177+19	MATCH										452	152																						
TOTAL		1 / 1								200	1362	1362													1	1	1	210					2	8







PROJECT NO. 23325

TEL. CO. TDS

EXCHANGE 351

ROUTE AA

SHEET 15 OF 27

EX. ROUTE AA

MAP REF. 351030

COUNTY:  
IMPERIAL

TOWNSHIP:

TAX DISTRICT:

MUNICIPALITY:  
WINTERHAVEN

TWN/RGE 16S / 23E

SEC. 18

STAKED BY FARR

DATE 01/14

DRAFTED BY FARR

DATE 10/14

W.O. TC-CA351ENG-001

REV 02/15

REV

REV

FILE:



MATCH 235+08

SHEET 16

231+92 HH10

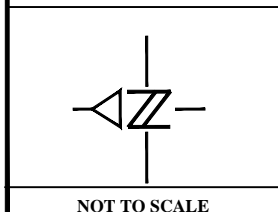
236+94 MATCH

Image courtesy of USGS © 2015 Microsoft Co



**RUNNING LINE:**  
**COCOPA ROAD = 3' EAST OF POWER POLES**  
**HAUGHTELIN ROAD = 3' SOUTH OF POWER POLES**  
**PEREZ ROAD = 3' EAST OF POWER POLES**  
**MIN DEPTH= 36"**

UNDERGROUND UTILITIES HAVE BEEN PLOTTED FROM FIELD OBSERVATIONS BUT ARE NOT NECESSARILY EXACT. IT IS THE CONTRACTOR'S RESPONSIBILITY TO FIELD LOCATE ALL UNDERGROUND OBSTRUCTIONS AND UTILITIES PRIOR TO CONSTRUCTION. COMPLETE REPAIR OF ANY AND ALL DAMAGES INCURRED SHALL BE AT THE EXPENSE OF THE CONTRACTOR.



NOT TO SCALE



POLE / PEDS		CABLE											POLE LINE & PED HARDWARE											CUST NO.	HBFO (96)	H01														
TEL CO.	FOR CO.	BD / HA	BG / PG	LEAD ANGLE	POLE LENGTH CLASS	YEAR		JOINT		BFO (96)	BFOI (96)	BFOV (1)(1.25)																												
						SET	REM	%	W/															BM2 (5/8)(8)	BM 53	BM 61D														
231+69	MATCH																																							
229+21	HH9	BH4 / BD3								100	1600	1600						1	1	80																				
231+92	HH10	BH4 / BD3								100/50	280	280						1	1																					
235+08	MATCH										330	330																												
236+94	MATCH										520	520																												
TOTAL		2 / 2								250	2730	2730						2	2	160																1	6			

























SHEET 20-4

SHEET 20-5

MATCH 383+80

ROAD 377+70  
IRRIG 377+30

IRRIG 370+64

35120

PB3R3

PB3R5

150' BM 61

150' BM 61

FISHER ROAD

W PARKMAN RD

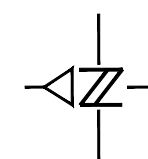
FORT YUMA-QUECHAN  
RESERVATION  
SONORAN DESERT

© 2014 Microsoft Corpora



RUNNING LINE = 6'  
FROM EDGE PVMT  
MIN DEPTH= 36"

UNDERGROUND UTILITIES HAVE BEEN PLOTTED FROM FIELD OBSERVATIONS BUT ARE NOT NECESSARILY EXACT. IT IS THE CONTRACTOR'S RESPONSIBILITY TO FIELD LOCATE ALL UNDERGROUND OBSTRUCTIONS AND UTILITIES PRIOR TO CONSTRUCTION. COMPLETE REPAIR OF ANY AND ALL DAMAGES INCURRED SHALL BE AT THE EXPENSE OF THE CONTRACTOR.



NOT TO SCALE



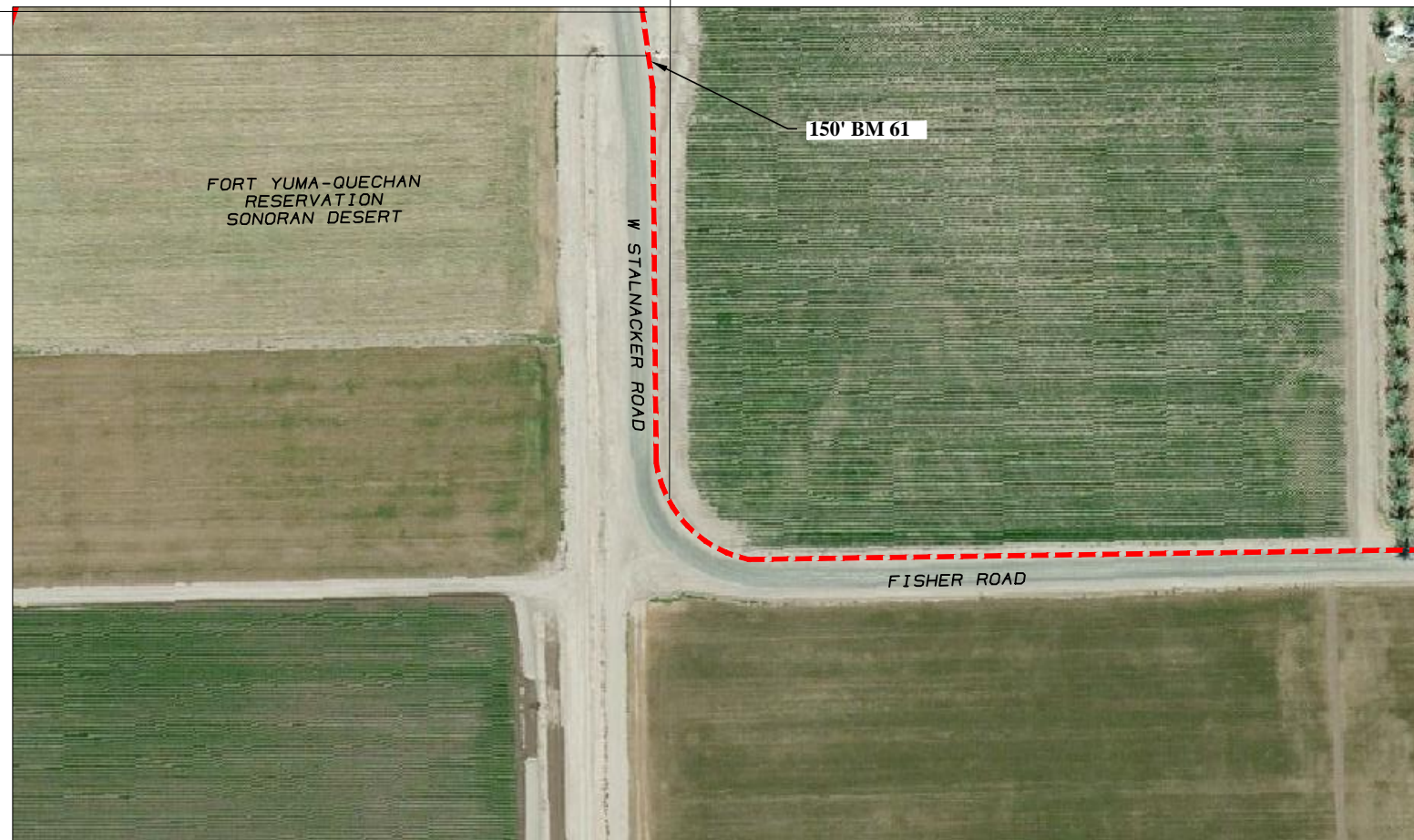
POLES / PEDA				CABLE											POLE LINE & PED HARDWARE											CUST NO.	HBFO (96)	H01	HC1	W BD				
TEL CO.	FOR CO.	BD / HA	BG / PG	LEAD ANGLE	POLE LENGTH CLASS	YEAR		JOINT			BFO (96)	BFOI (96)	BFOV (1)(1.25)	BFOV (2)(1.25)	BFC 25-24	BM2 (5/8)(8)	BM 2C	BM 20	BM 53	BM 61D														
365+48	MATCH																			150														
377+90	PB3R5										1280	1280																						
382+65	DSA										490		490				1								1		6	25						
382+95	PB3R3													50		1															25		1	
383+90	MATCH										618	618																						
<b>TOTAL</b>											<b>2878</b>	<b>1898</b>	<b>490</b>	<b>50</b>		<b>1</b>	<b>1</b>	<b>300</b>								<b>1</b>	<b>6</b>	<b>50</b>				<b>1</b>		

396+94 MATCH  
396+02 IRRIG

SHEET 20-6

TURN 391+94

MATCH 383+80

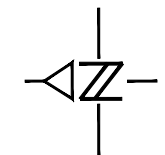


SHEET 20-4

RUNNING LINE = 6'  
FROM EDGE PVMT  
MIN DEPTH= 36"



UNDERGROUND UTILITIES HAVE BEEN PLOTTED FROM FIELD OBSERVATIONS BUT ARE NOT NECESSARILY EXACT. IT IS THE CONTRACTOR'S RESPONSIBILITY TO FIELD LOCATE ALL UNDERGROUND OBSTRUCTIONS AND UTILITIES PRIOR TO CONSTRUCTION. COMPLETE REPAIR OF ANY AND ALL DAMAGES INCURRED SHALL BE AT THE EXPENSE OF THE CONTRACTOR.



NOT TO SCALE



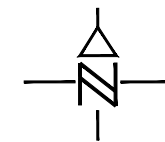
POLES / PEDS					CABLE								POLE LINE & PED HARDWARE							CUST NO.
POLE / PED NO.		BD / HA	BG / PG	LEAD ANGLE	POLE LENGTH CLASS	YEAR				BFO (96)	BFOI (96)	BFOV (1)(1.25)	BM2 (5/8)(8)	BM 53	BM 61D					
TEL CO.	FOR CO.					SET	REM	%	W/											
383+80	MATCH																			
396+94	MATCH									1360	1360			150						
TOTAL										1360	1360			150						



SHEET 20-6 OF 27
EX. ROUTE BP
MAP REF. 351034
COUNTY: IMPERIAL
TOWNSHIP:
TAX DISTRICT:
MUNICIPALITY: BARD
TWN/RGE 16S / 23E
SEC. 5
STAKED BY FARR
DATE 01/14
DRAFTED BY FARR
DATE 10/14
W.O. TC-CA351ENG-001
REV 02/15
REV
REV
FILE:



RUNNING LINE = 6'  
FROM EDGE PVMT  
MIN DEPTH= 36"



NOT TO SCALE

UNDERGROUND UTILITIES HAVE BEEN PLOTTED FROM FIELD OBSERVATIONS BUT ARE NOT NECESSARILY EXACT. IT IS THE CONTRACTORS RESPONSIBILITY TO FIELD LOCATE ALL UNDERGROUND OBSTRUCTIONS AND UTILITIES PRIOR TO CONSTRUCTION. COMPLETE REPAIR OF ANY AND ALL DAMAGES INCURRED SHALL BE AT THE EXPENSE OF THE CONTRACTOR.



POLES / PEDS				CABLE						POLE LINE & PED HARDWARE						CUST NO.		
POLE / PED NO.		BD / HA	BG / PG	LEAD ANGLE	POLE LENGTH CLASS	YEAR		JOINT		BFO (96)	BFOI (96)	BFOV (1)(1.25)	BM2 (5/8)(8)	BM 53	BM 61D			
TEL CO.	FOR CO.					SET	REM	%	W/									
396+94	MATCH																	
413+44	MATCH									1700	1700			1	200			
TOTAL										1700	1700			1	200			



PROJECT NO. 23325

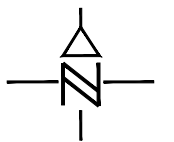
TEL. CO. TDS

EXCHANGE 351

ROUTE BP



RUNNING LINE = 6'  
FROM EDGE PVMT  
MIN DEPTH= 36"



NOT TO SCALE

UNDERGROUND UTILITIES HAVE BEEN PLOTTED FROM FIELD OBSERVATIONS BUT ARE NOT NECESSARILY EXACT. IT IS THE CONTRACTORS RESPONSIBILITY TO FIELD LOCATE ALL UNDERGROUND OBSTRUCTIONS AND UTILITIES PRIOR TO CONSTRUCTION. COMPLETE REPAIR OF ANY AND ALL DAMAGES INCURRED SHALL BE AT THE EXPENSE OF THE CONTRACTOR.



POLES / PEDS					CABLE								POLE LINE & PED HARDWARE									CUST. NO.
POLE / PED NO.		BD / HA	BG / PG	LEAD ANGLE	POLE LENGTH CLASS	YEAR				BFO (96)	BFOI (96)	BFOV (1)(1.25)	BM2 (5/8)(8)	BM 53	BM 61D	CUST. NO.						
TEL CO.	FOR CO.					SET	REM	%	W/													
413+44	MATCH																					
431+08	ROAD									1820	1820											
TOTAL										1820	1820											





RUNNING LINE = 6'  
FROM EDGE PVMT  
MIN DEPTH= 36"

SHEET 20-9 OF 27
EX. ROUTE BP
MAP REF. 351033
COUNTY: IMPERIAL
TOWNSHIP:
TAX DISTRICT:
MUNICIPALITY: BARD
TWN/RGE 15S / 23E
SEC. 32
STAKED BY FARR
DATE 01/14
DRAFTED BY FARR
DATE 10/14
W.O. TC-CA351ENG-001
REV 02/15
REV
REV
FILE:
NOT TO SCALE



UNDERGROUND UTILITIES HAVE BEEN PLOTTED FROM FIELD OBSERVATIONS BUT ARE NOT NECESSARILY EXACT. IT IS THE CONTRACTORS RESPONSIBILITY TO FIELD LOCATE ALL UNDERGROUND OBSTRUCTIONS AND UTILITIES PRIOR TO CONSTRUCTION. COMPLETE REPAIR OF ANY AND ALL DAMAGES INCURRED SHALL BE AT THE EXPENSE OF THE CONTRACTOR.



POLES / PEDS				CABLE				POLE LINE & PED HARDWARE						CUST NO.	HBFO (96)	H01	HC1	W BD					
POLE/ PED NO.	BD / HA	BG / PG	LEAD ANGLE	POLE LENGTH CLASS	YEAR		JOINT		BFO (96)	BFOI (96)	BFOV (1)(1.25)	BFC 50-24	BM2 (5/8)(8)						BM 2C	BM 20	BM 53	BM 61D	
445+58	MATCH																						
456+20	P1401									1094	1094			1						50	1		
457+00	DSA								50	150	150	150			1		150			1	6	50	
TOTAL									50	1244	1244	150		1	1		150			1	6	100	1

322+68

330+42

333+87

334+53

336+96

339+90

ROAD

IRRIG

ROAD

IRRIG

MATCH

SHEET 20

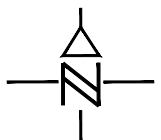
SHEET 22



RUNNING LINE = 6'  
FROM EDGE PVMT  
MIN DEPTH= 36"



UNDERGROUND UTILITIES HAVE BEEN PLOTTED FROM FIELD OBSERVATIONS BUT ARE NOT NECESSARILY EXACT. IT IS THE CONTRACTORS RESPONSIBILITY TO FIELD LOCATE ALL UNDERGROUND OBSTRUCTIONS AND UTILITIES PRIOR TO CONSTRUCTION. COMPLETE REPAIR OF ANY AND ALL DAMAGES INCURRED SHALL BE AT THE EXPENSE OF THE CONTRACTOR.



NOT TO SCALE



POLES / PEDS					CABLE							POLE LINE & PED HARDWARE							CUST. NO.	
POLE / PED NO.		BD / HA	BG / PG	LEAD ANGLE	POLE LENGTH CLASS	YEAR				BFO (96)	BFOI (96)	BFOV (1)(1.25)	BM2 (5/8)(8)	BM 53	BM 61D					
TEL CO.	FOR CO.					SET	REM	%	W/											
322+68	MATCH																			
															480					
339+90	MATCH									1766	1766			1						
TOTAL										1766	1766			1	480					













