

**TOPOGRAPHY SOURCE**

BASE CONTOUR DATA PROVIDED BY PG&E AS A COGO POINT FILE ON MAY 7, 2018.

**DATUM**

HORIZONTAL - NAD 83, CALIFORNIA, ZONE II, US FEET  
VERTICAL - NAVD 88, US FEET

**ASSESSORS PARCEL NUMBERS**

EXISTING PROPERTY LINE INFORMATION WAS OBTAINED BY THE SONOMA COUNTY GIS DATABASE. PROPERTY LINES SHOWN WITHIN THIS PLAN SET ARE SUBJECT TO VERIFICATION IN THE FIELD.

APN: 067-260-032  
COUNTY OF SONOMA  
2300 COUNTY CENTER DR 120A  
SANTA ROSA, CA 95403

**TOTAL AREA OF DISTURBANCE**

SHILOH RANCH PARK - 0.59 ACRES

**GRADING QUANTITIES**

SHILOH RANCH PARK

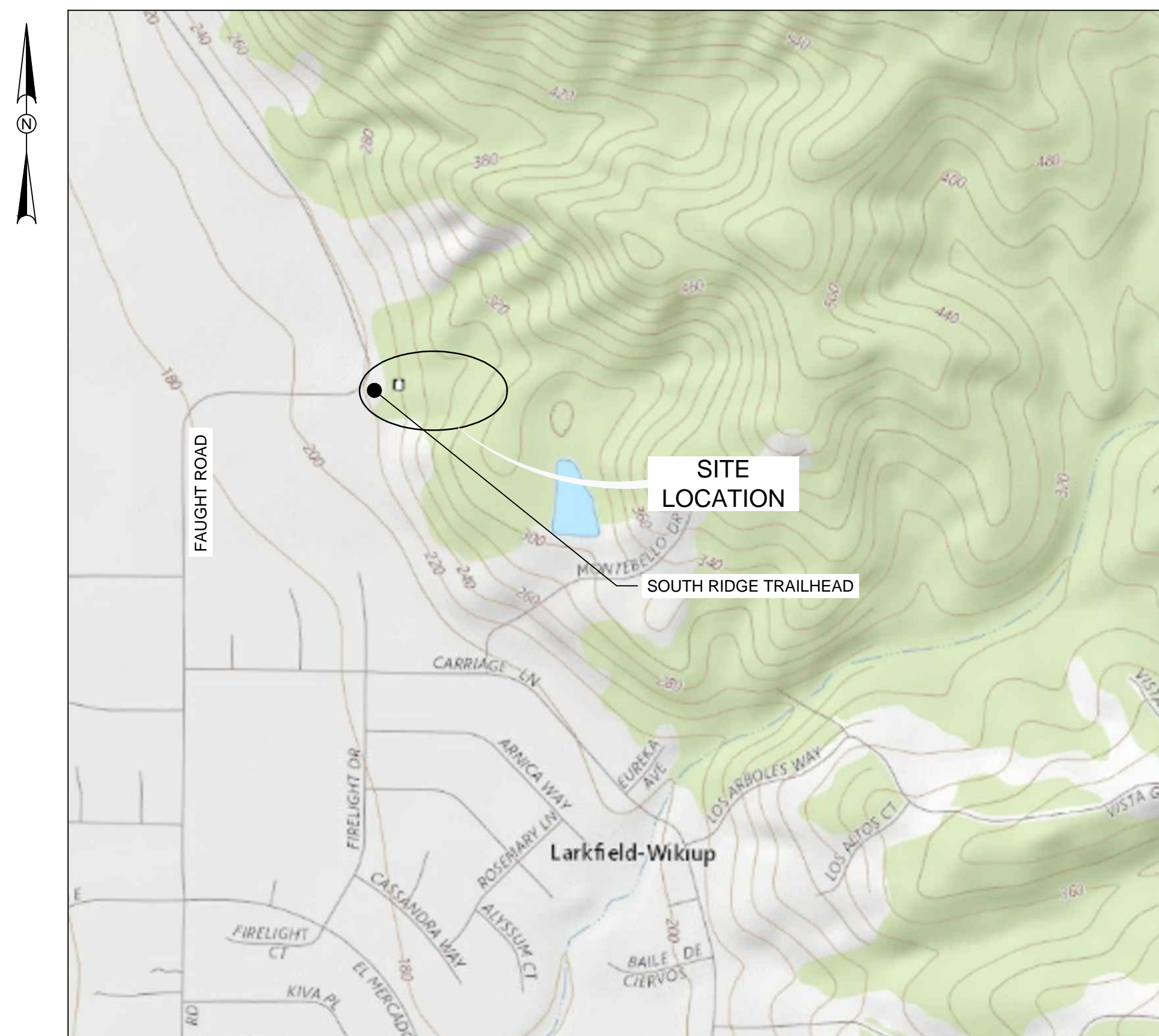
GRADED AREA 0.35 [ACRES]  
CUT QUANTITIES 372 [CYD]  
FILL QUANTITIES 368 [CYD]  
NET 4 [CYD] CUT

QUANTITIES PROVIDED ABOVE ARE FOR COUNTY PERMITTING PURPOSES ONLY. THE CONTRACTOR IS RESPONSIBLE FOR DETERMINING THEIR QUANTITIES FOR BID PURPOSES. THE ENGINEER OF RECORD DOES NOT CERTIFY TO THE QUANTITIES ABOVE.

WDID# \_\_\_\_\_

# FULTON-FITCH ALIGNMENT RE-CONDUCTOR PULL SITE SHILOH RANCH PARK SONOMA COUNTY, CALIFORNIA

APN: 067-260-032  
SITE LAT./LONG.: 38°36'24"N; 122°50'30"W



**LOCATION MAP**

SCALE: 1" = 500'



**PLAN REPRODUCTION WARNING**  
THE PLANS HAVE BEEN CREATED ON ANSI D (22"x34") SHEETS. FOR REDUCTIONS, REFER TO GRAPHIC SCALE.  
THE PLANS HAVE BEEN CREATED FOR FULL COLOR PLOTTING. ANY SET OF THE PLANS THAT IS NOT PLOTTED IN FULL COLOR SHALL NOT BE CONSIDERED ADEQUATE FOR CONSTRUCTION PURPOSES.  
\*\*WARNING\*\*: INFORMATION MAY BE LOST IN COPYING AND/OR GRAY SCALE PLOTTING.

**PROJECT OWNER**  
PACIFIC GAS & ELECTRIC COMPANY  
HENRY HO, P.E. 925-328-5318  
6111 BOLLINGER CANYON RD  
SAN RAMON, CA 94583



**SHEET INDEX**

SHEET NUMBER	SHEET TITLE
1	COVER
2	NOTES AND LEGEND
3	SONOMA COUNTY NOTES
4	OVERALL LOCATION PLAN
5	SITE & GRADING PLAN
6	CONSTRUCTION DETAILS



40 Clark Street, Suite J  
Salinas, CA 95301  
Phone: 831-755-7900  
www.kleinfelder.com

**REVISIONS**

REV	DESCRIPTION	DSN DWN	CHK APP	DATE
A	ISSUED FOR REVIEW	MRS	AB AT	7/13/2018
B	ISSUED FOR REVIEW	KRV	AGB AT	2/7/2019

**SCALE VERIFICATION**

THIS BAR IS 1 INCH IN LENGTH ON ORIGINAL DRAWING  
0 1"  
IF IT'S NOT 1 INCH ON THIS SHEET ADJUST YOUR SCALES ACCORDINGLY

ORIGINAL DRAWING SIZE IS 24 x 36

**COVER**

FULTON-FITCH ALIGNMENT  
RE-CONDUCTOR PULL-SITE  
SHILOH RANCH PARK



PACIFIC GAS & ELECTRIC COMPANY  
6121 BOLLINGER CANYON ROAD  
SAN RAMON, CA 94583

**GRADING PERMIT PLANS**

PROJECT NO.	20190767	<b>1</b>
ISSUE DATE	02/07/2019	
CURRENT REVISION	B	
DESIGNED BY	K.VOLETTE	
DRAWN BY	K.VOLETTE	
CHECKED BY	A. BISACKY	
APPROVED BY	A. TRAUM	SHEET

CAD FILE: C:\pwworking\kleinfelder\proj\181533201\_Shiloh Park\_Cover.dwg LAYOUT: 1 COVER PLOTTED: 2/7/2019 1:51 PM BY: kva.violetta



SONOMA COUNTY STANDARD NOTES

- 1. PERFORM GRADING AND DRAINAGE IMPROVEMENTS IN ACCORDANCE WITH CHAPTER AND 11A OF THE SONOMA COUNTY CODE (SCC)...

SONOMA COUNTY GRADING & DRAINAGE INSPECTION NOTES

- 1. THE PERMITTEE AND THE PROPERTY OWNER SHALL BE RESPONSIBLE FOR THE WORK TO BE PERFORMED IN COMPLIANCE WITH THE APPROVED PLANS AND SPECIFICATIONS...

SONOMA COUNTY EROSION PREVENTION & SEDIMENT CONTROL NOTES

- 1. PERFORM EROSION PREVENTION AND SEDIMENT CONTROL IN ACCORDANCE WITH CHAPTER 11 AND 11A OF THE SONOMA COUNTY CODE (SCC)...

KLEINFELDER logo with tagline 'Bright People. Right Solutions.' and contact information for 40 Clark Street, Suite J, Sausalito, CA 94965.

Table with columns for REVISIONS, REV, DESCRIPTION, DSN, CHK, DATE. Includes revision A 'ISSUED FOR REVIEW' and B 'ISSUED FOR REVIEW'.

SCALE VERIFICATION section with a 1-inch scale bar and instructions: 'THIS BAR IS 1 INCH IN LENGTH ON ORIGINAL DRAWING'.

SONOMA COUNTY NOTES
FULTON-FITCH ALIGNMENT
RE-CONDUCTOR PULL-SITE
SHILOH RANCH PARK

Pacific Gas and Electric Company logo and address: PACIFIC GAS & ELECTRIC COMPANY, 6121 BOLLINGER CANYON ROAD, SAN RAMON, CA 94583.

GRADING PERMIT PLANS

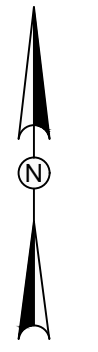
Table with project details: PROJECT NO. 20190767, ISSUE DATE 02/07/2019, CURRENT REVISION B, DESIGNED BY K.VOLETTE, DRAWN BY K.VOLETTE, CHECKED BY A. BISACKY, APPROVED BY A. TRAUM SHEET 3 of 6.

CAD FILE: C:\pwworking\kleinfelder\pwworking\civil\2019\20190767\20190767.dwg PLOTTED: 2/7/2019 2:00 PM BY: kurt.violette LAYOUT: 3 NOTES

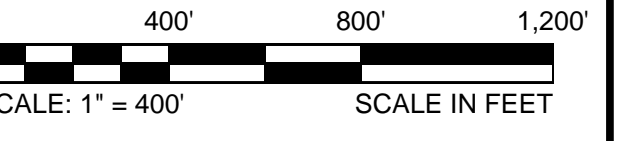
REVISIONS

REV	DESCRIPTION	DSN DWN	CHK APP	DATE
A	ISSUED FOR REVIEW	MRS	AB	7/13/2018
B	ISSUED FOR REVIEW	KRV	AGB	2/7/2019

APN: 067-260-032  
COUNTY OF SONOMA  
2300 COUNTY CENTER DR 120 A  
SANTA ROSA, CA 95403



**SCALE VERIFICATION**  
THIS BAR IS 1 INCH IN LENGTH  
ON ORIGINAL DRAWING  
0 1"  
IF IT'S NOT 1 INCH ON THIS  
SHEET ADJUST YOUR  
SCALES ACCORDINGLY



ORIGINAL DRAWING SIZE IS 24 x 36

**OVERALL LOCATION PLAN**

FULTON-FITCH ALIGNMENT  
RE-CONDUCTOR PULL-SITE  
SHILOH RANCH PARK



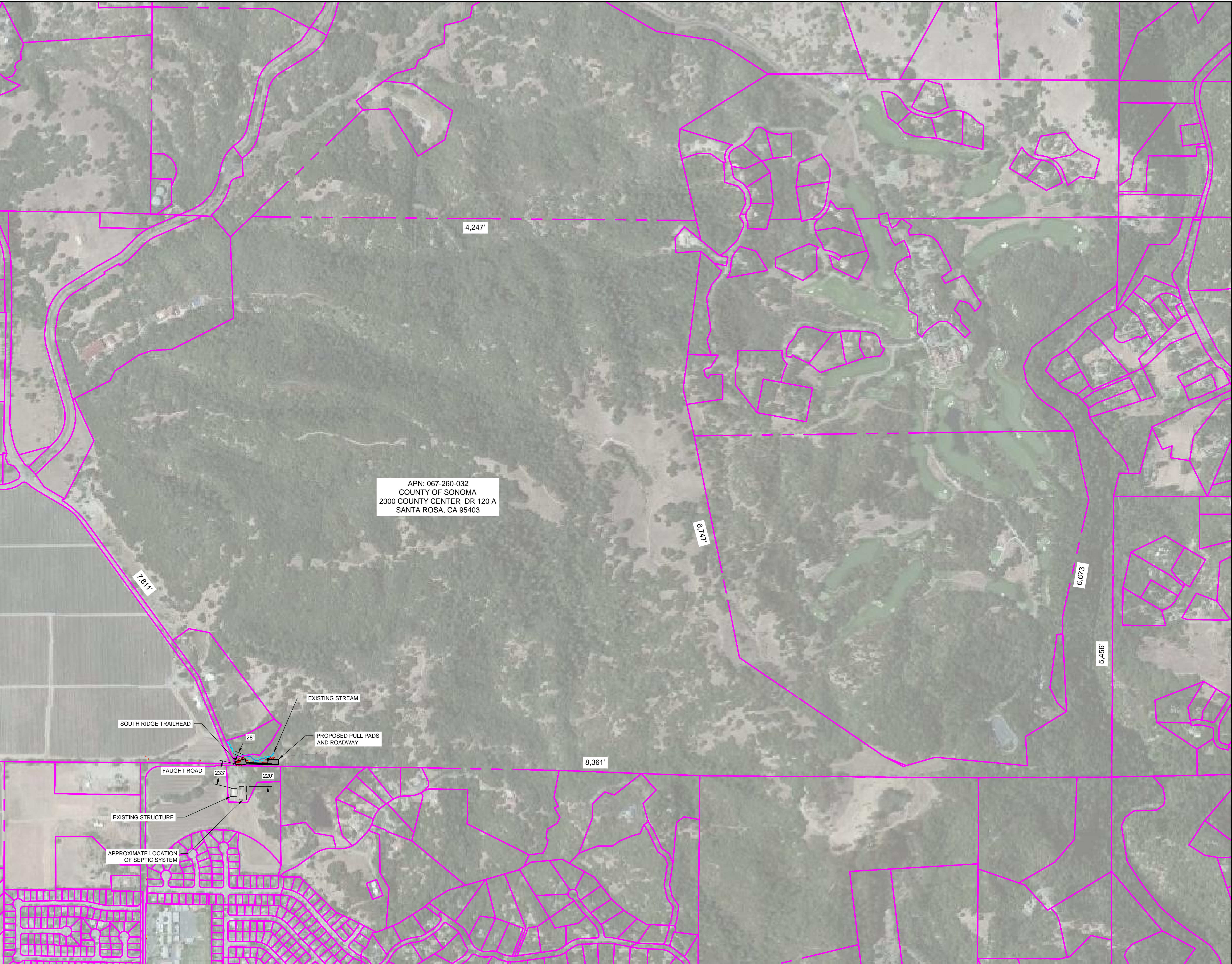
PACIFIC GAS & ELECTRIC COMPANY  
6121 BOLLINGER CANYON ROAD  
SAN RAMON, CA 94583

**GRADING PERMIT PLANS**

PROJECT NO.	20190767
ISSUE DATE	02/07/2019
CURRENT REVISION	B
DESIGNED BY	K.VOLETTE
DRAWN BY	K.VOLETTE
CHECKED BY	A. BISACKY
APPROVED BY	A. TRAUM

4

CAD FILE: C:\pwworking\kleinfelder\dwg\067-260-032\067-260-032.dwg; PLOTTED: 2/7/2019 1:55 PM BY: burt.volders; LAYOUT: SITE PLAN



REVISIONS				
REV	DESCRIPTION	DSN	CHK	DATE
A	ISSUED FOR REVIEW	MRS	AB	7/13/2018
B	ISSUED FOR REVIEW	KRV	AGB	2/7/2019



**SCALE VERIFICATION**  
THIS BAR IS 1 INCH IN LENGTH ON ORIGINAL DRAWING

IF IT'S NOT 1 INCH ON THIS SHEET ADJUST YOUR SCALES ACCORDINGLY

0 20' 40' 60'  
SCALE: 1" = 20' SCALE IN FEET

ORIGINAL DRAWING SIZE IS 24 x 36

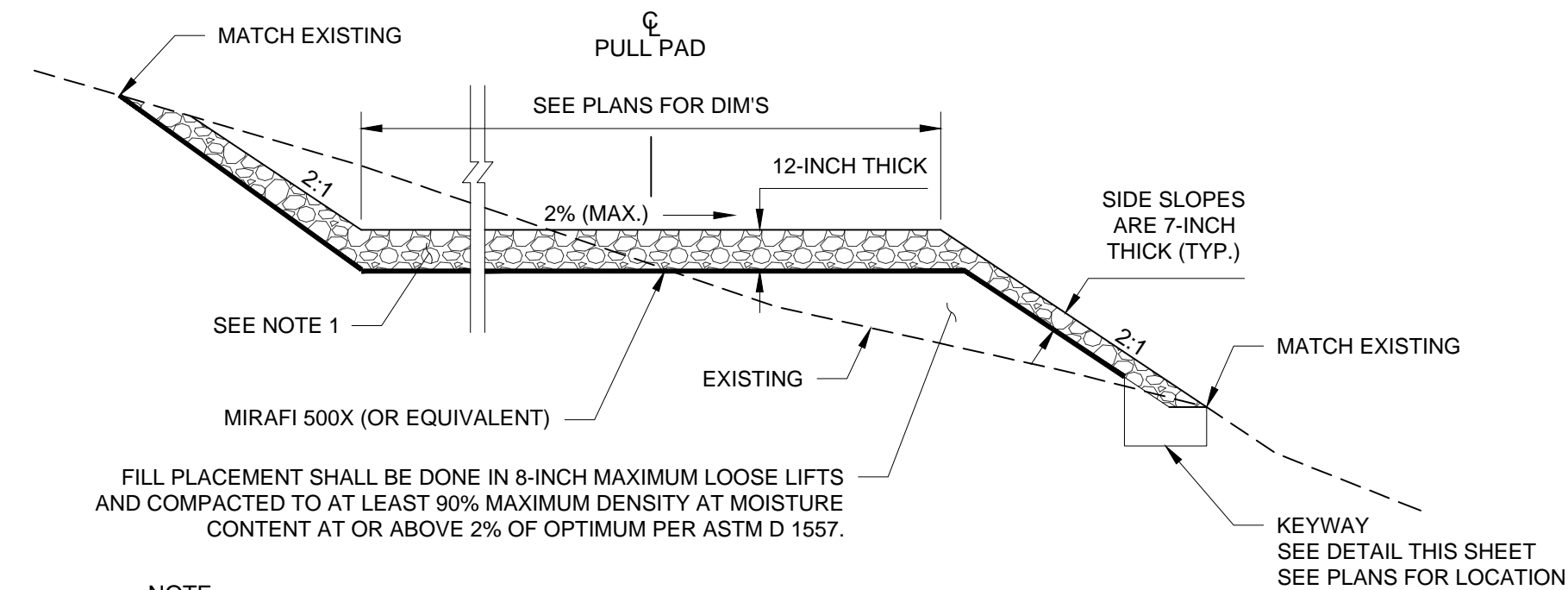
**SITE PLAN**  
FULTON-FITCH ALIGNMENT  
RE-CONDUCTOR PULL-SITE  
SHILOH RANCH PARK

**Pacific Gas and Electric Company**  
PACIFIC GAS & ELECTRIC COMPANY  
6121 BOLLINGER CANYON ROAD  
SAN RAMON, CA 94583

GRADING PERMIT PLANS	
PROJECT NO.	20190767
ISSUE DATE	02/07/2019
CURRENT REVISION	B
DESIGNED BY	K.VOLETTE
DRAWN BY	K.VOLETTE
CHECKED BY	A. BISACKY
APPROVED BY	A. TRAUM

CAD FILE: C:\pwworking\kleinfelder\working\2019\02\20190767\20190767.dwg PLOT DATE: 2/7/2019 1:54:44 PM BY: kvolette

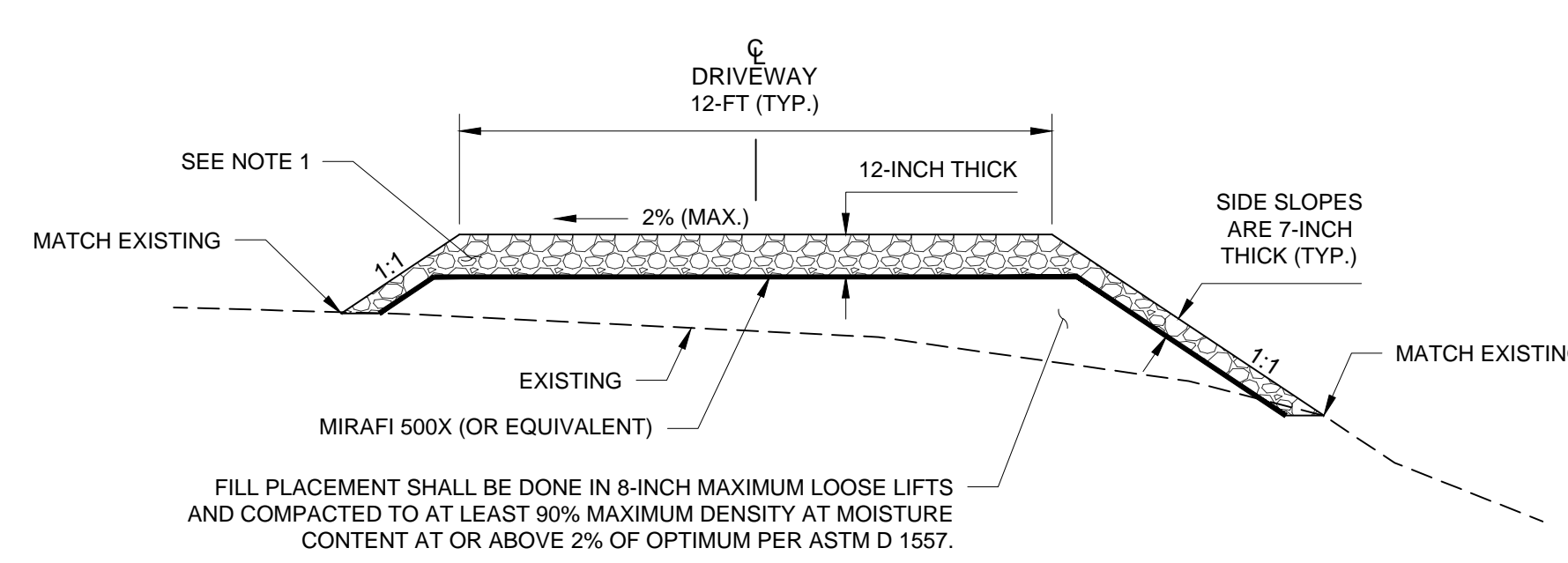
SECTION A - A



- NOTE:
- FURNISH AND INSTALL SMALL-ROCK SLOPE PROTECTION THAT MEETS THE GRADATION REQUIREMENTS OF CALTRANS STANDARD SPECIFICATION 72-4 ROCK GRADING FOR 7-INCH THICK LAYER.
  - SLOPE SHALL BE OVERBUILT AND TRIMMED.
  - EXISTING GRAD SHALL BE SCARIFIED AND RECOMPACTED TO AT LEAST 90% MAXIMUM DENSITY AT MOISTURE CONTENT AT OR ABOVE 2% OF OPTIMUM PER ASTM D 1557.

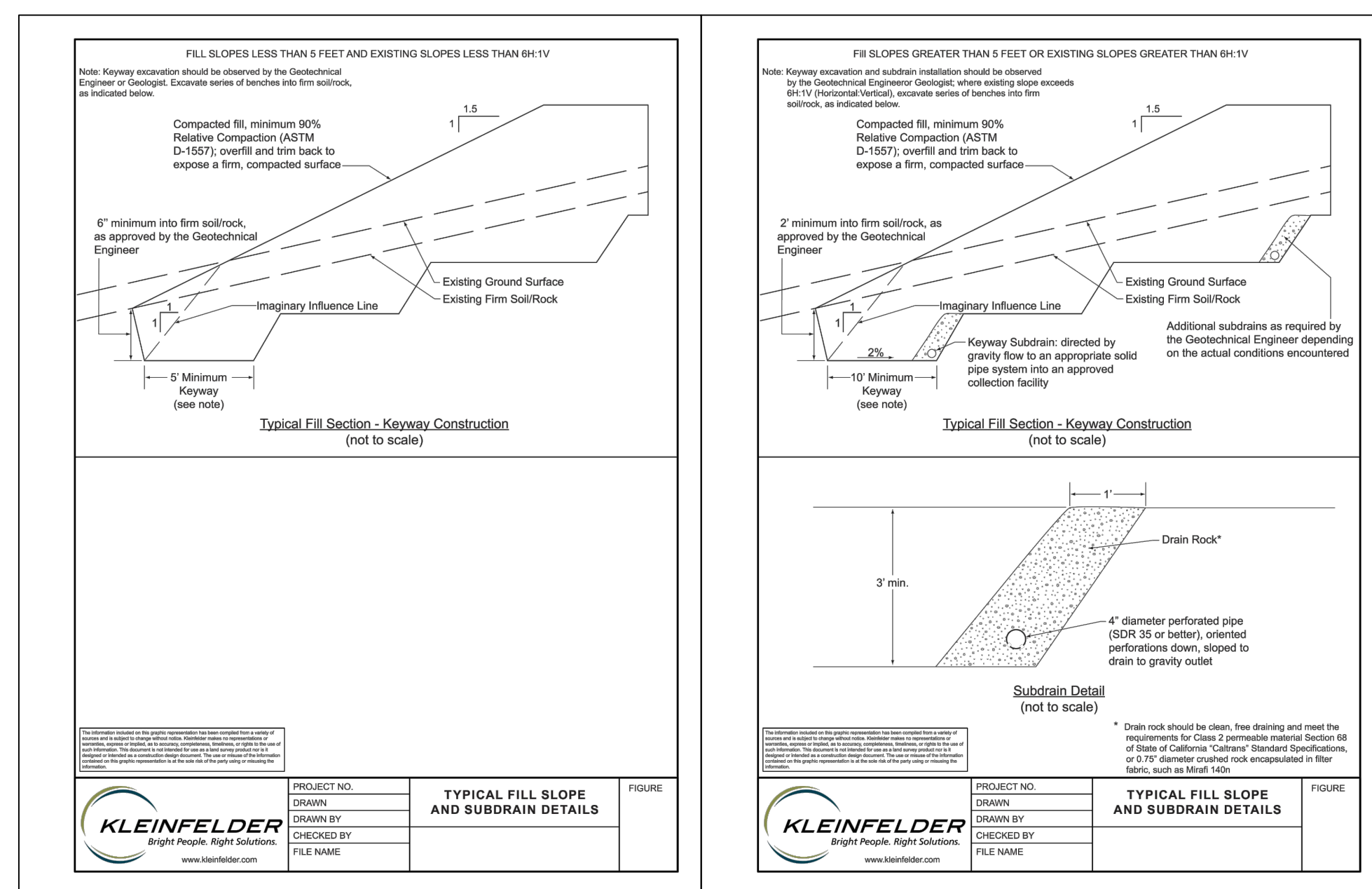
1 TYPICAL SECTION - PULL PAD  
SCALE: N.T.S

SECTION B-B

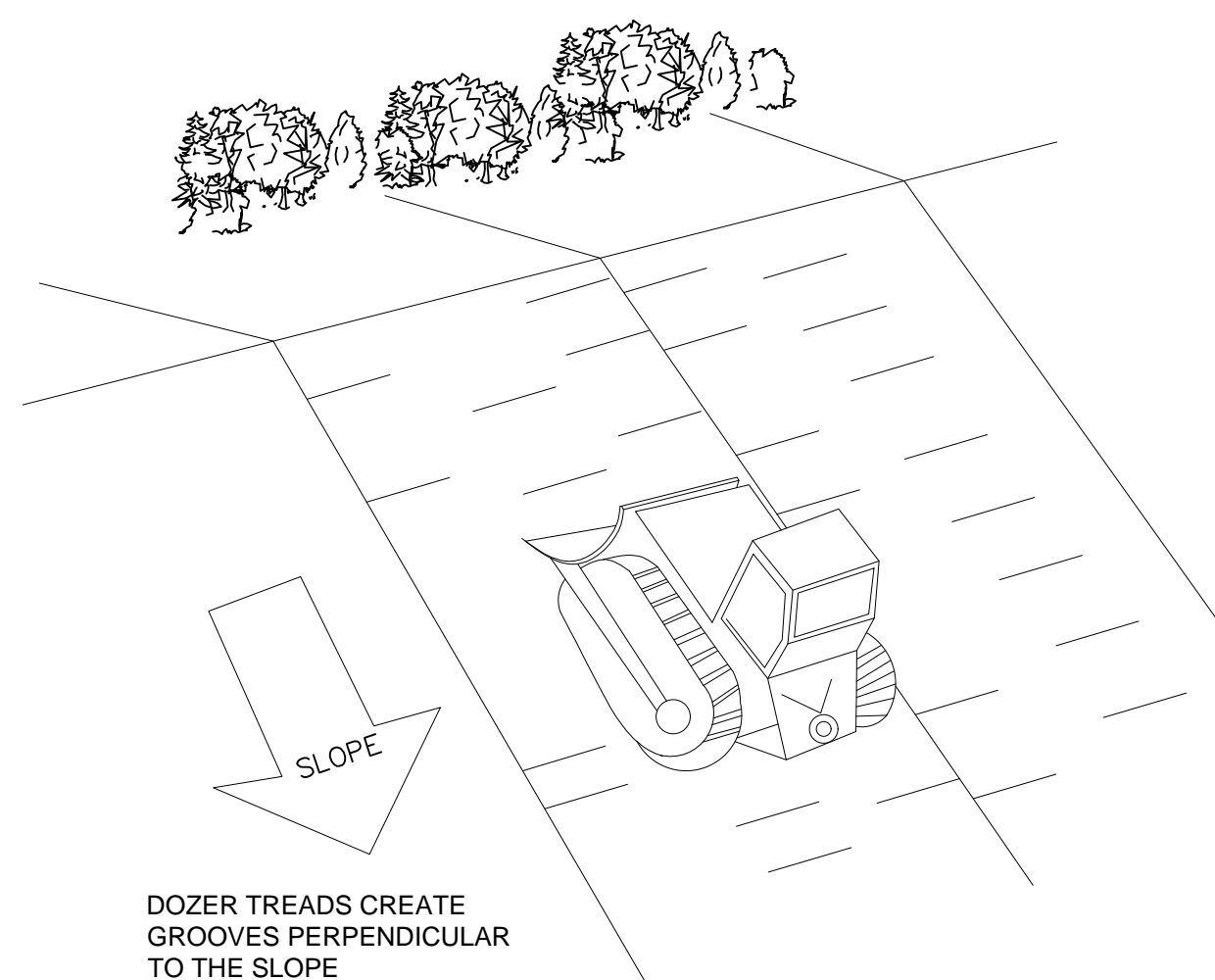


- NOTE:
- FURNISH AND INSTALL SMALL-ROCK SLOPE PROTECTION THAT MEETS THE GRADATION REQUIREMENTS OF CALTRANS STANDARD SPECIFICATION 72-4 ROCK GRADING FOR 7-INCH THICK LAYER.
  - SLOPE SHALL BE OVERBUILT AND TRIMMED.
  - EXISTING GRAD SHALL BE SCARIFIED AND RECOMPACTED TO AT LEAST 90% MAXIMUM DENSITY AT MOISTURE CONTENT AT OR ABOVE 2% OF OPTIMUM PER ASTM D 1557.

2 TYPICAL SECTION - SITE ACCESS DRIVE  
SCALE: N.T.S

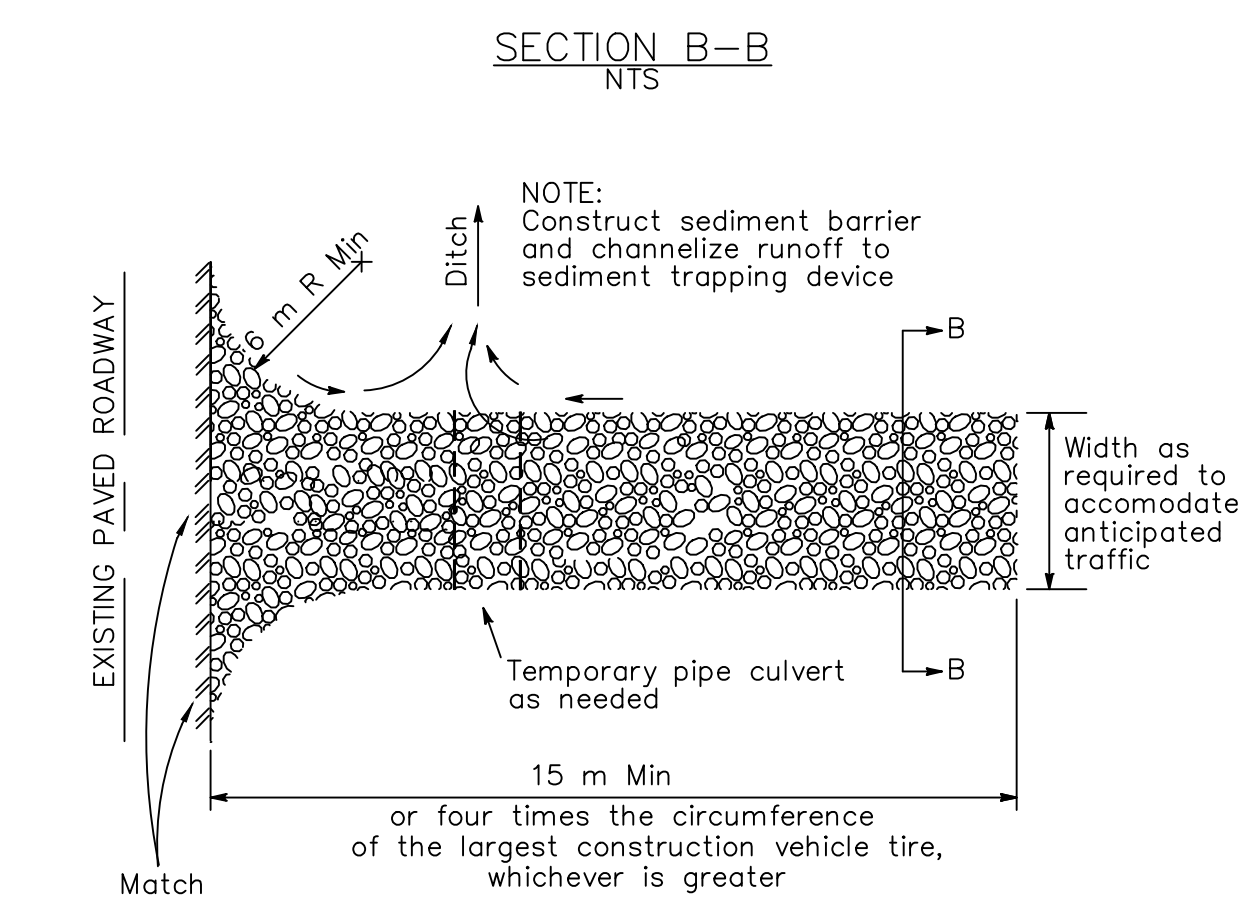
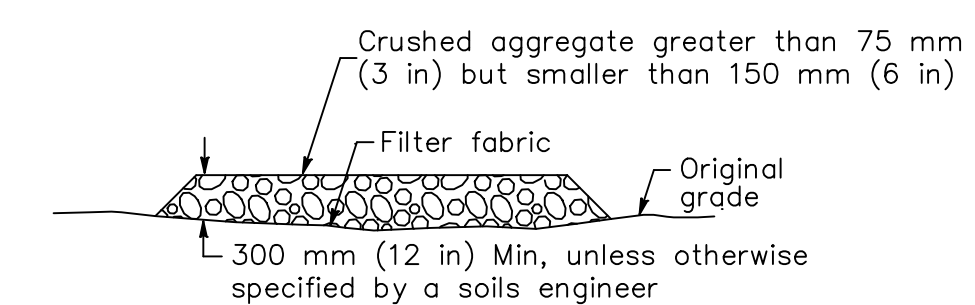


3 KEYWAY  
SCALE: N.T.S

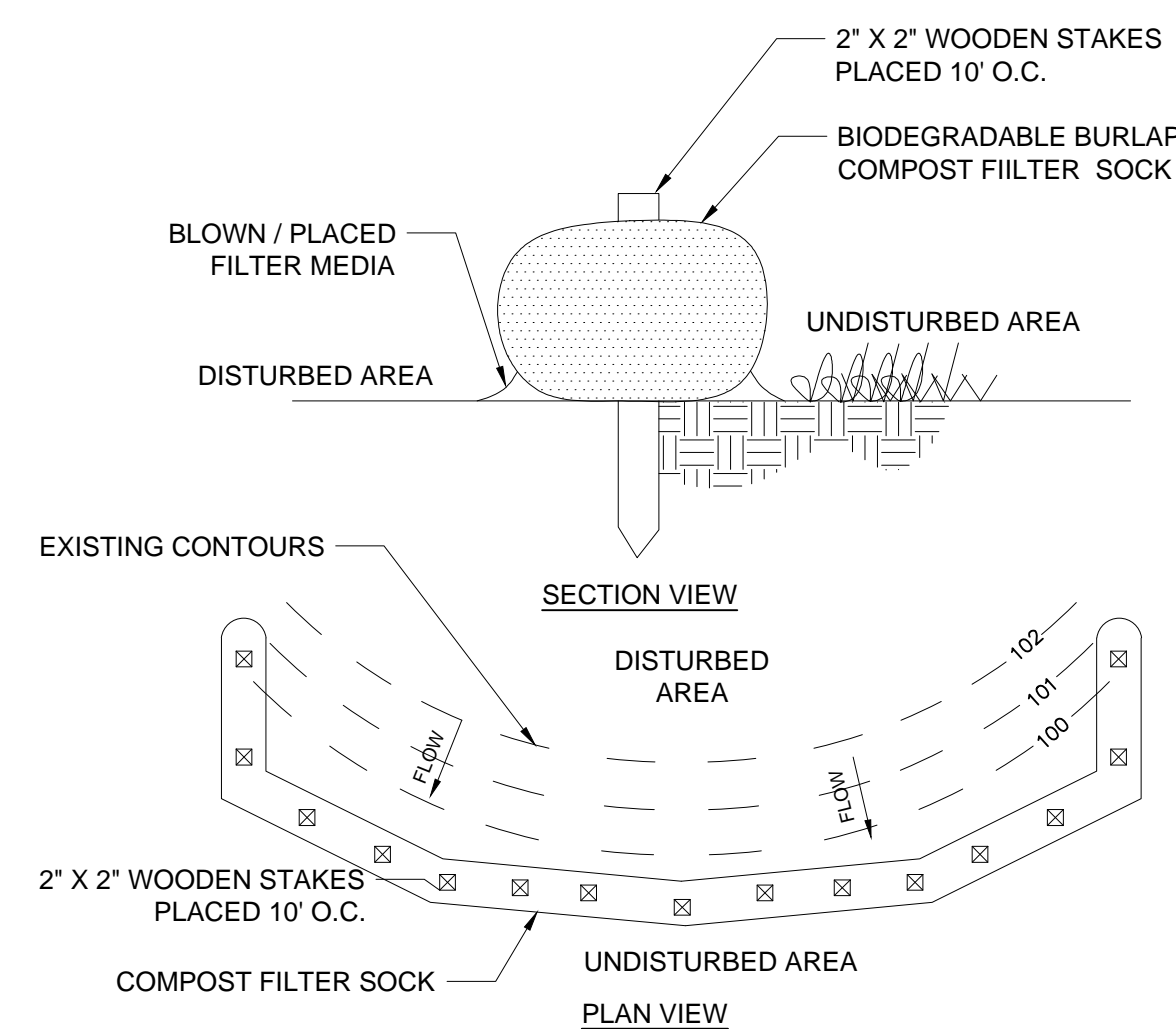


- NOTE
- TRACKING SLOPES IS DONE BY RUNNING TRACKED MACHINERY UP AND DOWN THE SLOPE, LEAVING TREAD MARKS PARALLEL TO THE CONTOUR. IF A BULLDOZER IS USED, THE BLADE SHOULD BE UP.

4 BULLDOZER TRACKING DETAIL  
SCALE: N.T.S



5 CONSTRUCTION ENTRANCE  
SCALE: N.T.S



- NOTES
- COMPOST FILTER SOCK SHALL BE PLACED AT EXISTING LEVEL GRADE. BOTH ENDS OF THE SOCK SHALL BE EXTENDED AT LEAST 8 FEET UP SLOPE AT 45 DEGREES TO THE MAIN SOCK ALIGNMENT. STAKES MAY BE INSTALLED IMMEDIATELY DOWNSLOPE OF THE SOCK IF SO SPECIFIED BY THE MANUFACTURER.
  - PLACE COMPOST FILTER SOCK 10-FEET APART ON SLOPES STEEPER THAN 2:1.
  - TRAFFIC SHALL NOT BE PERMITTED TO CROSS FILTER SOCKS.
  - ACCUMULATED SEDIMENT SHALL BE REMOVED WHEN IT REACHES HALF THE ABOVEGROUND HEIGHT OF THE SOCK AND DISPOSED IN THE MANNER DESCRIBED ELSEWHERE IN THE PLAN.
  - DAMAGED SOCKS SHALL BE REPAIRED ACCORDING TO MANUFACTURER'S SPECIFICATIONS OR REPLACED WITHIN 24 HOURS OF INSPECTION.
  - BIODEGRADABLE FILTER SOCKS SHALL BE REPLACED AFTER 6 MONTHS;
  - UPON STABILIZATION OF THE AREA TRIBUTARY TO THE SOCK, STAKES SHALL BE REMOVED. THE SOCK MAY BE LEFT IN PLACE AND VEGETATED OR REMOVED. IN THE LATER CASE, THE MESH SHALL BE CUT OPEN AND THE MULCH SPREAD AS A SOIL SUPPLEMENT.

6 COMPOST FILTER SOCK  
SCALE: N.T.S

REVISIONS				
REV	DESCRIPTION	DSN	CHK	DATE
A	ISSUED FOR REVIEW	MRS	AB	7/13/2018
B	ISSUED FOR REVIEW	KRV	AGB	2/7/2019

SCALE VERIFICATION  
THIS BAR IS 1 INCH IN LENGTH ON ORIGINAL DRAWING  
0 1"  
IF IT'S NOT 1 INCH ON THIS SHEET ADJUST YOUR SCALES ACCORDINGLY

ORIGINAL DRAWING SIZE IS 24 x 36

CONSTRUCTION DETAILS

FULTON-FITCH ALIGNMENT  
RE-CONDUCTOR PULL-SITE  
SHILOH RANCH PARK



PACIFIC GAS & ELECTRIC COMPANY  
6121 BOLLINGER CANYON ROAD  
SAN RAMON, CA 94583

GRADING PERMIT PLANS

PROJECT NO.	20190767
ISSUE DATE	02/07/2019
CURRENT REVISION	B
DESIGNED BY	K.VOLETTE
DRAWN BY	K.VOLETTE
CHECKED BY	A. BISACKY
APPROVED BY	A. TRAUM