

3.15 PUBLIC SERVICES

3.15 Public Services

This section presents the environmental setting and impact analysis for public services resulting from the Proposed Project. This section includes existing public services information for the Proposed Project, applicable regulations, environmental impacts, and mitigation measures to reduce or avoid significant effects.

3.15.1 Environmental Setting

Regional Setting

Service Providers

Fire stations, police stations, schools, parks, and hospitals serving the Proposed Project area are shown in Figure 3.15-1.

Fire

The Kern County Fire Department (KCFD), Los Angeles County Fire Department (LACFD), and the Bakersfield Fire Department provide fire protection services for the Proposed Project. The City of Arvin falls within the jurisdiction of the Kern County Fire Department (City of Arvin, 2022b). The KCFD serves a population of more than 500,000 people and an area of more than 8,000 square miles (Kern County Fire Department, 2022). The KCFD has more than 546 uniformed firefighters and operates a total of 46 fire stations throughout Kern County (Kern County Fire Department, 2022). The Bakersfield Fire Department provides services within the City boundaries from 14 fire stations.

Response times vary throughout Kern County and the City of Bakersfield depending on the proximity of the nearest fire station. The Operational and Administrative Analysis report (Center for Public Safety Management, LLC, 2017) for Kern County analyzes response times in four subareas: urban areas, rural areas, remote areas, and the Bakersfield Joint Protection Area (JPA). The Bakersfield JPA consists of an agreement between the Bakersfield Fire Department and the KCFD and covers the City of Bakersfield and first due areas for 12 KCFD stations. Urban areas include the cities of Arvin, Delano, Maricopa, McFarland, Ridgecrest, Shafter, Taft, Tehachapi, and any area in the City of Bakersfield not covered by the JPA. Both *rural areas* and *remote areas* are defined as areas outside of city limits, but *rural areas* are those within 8 miles of a fire station while *remote areas* are those beyond 8 miles of a fire station. In urban areas, response times average 8.8 minutes for the KCFD. In rural areas and remote areas, response times are longer and average 11.4 and 21.2 minutes, respectively. The average response time for the Bakersfield JPA is 9.1 minutes (Center for Public Safety Management, LLC, 2017).

The LACFD provides fire, safety, and emergency medical services to the unincorporated areas of the county. The LACFD serves a population of more than 4 million people in an area of more than 2,300 square miles (County of Los Angeles Fire Department, 2020). The LACFD has more than 700 firefighters and operates 177 fire stations throughout Los Angeles County (County of

3.15 PUBLIC SERVICES

Los Angeles Fire Department, 2020). The typical response time for the LACFD in urban areas is approximately 6 minutes; longer response times are expected in rural areas or remote areas (County of Los Angeles, 2013).

The closest fire stations to the Proposed Project are provided in Table 3.15-1 and depicted in Figure 3.15-1.

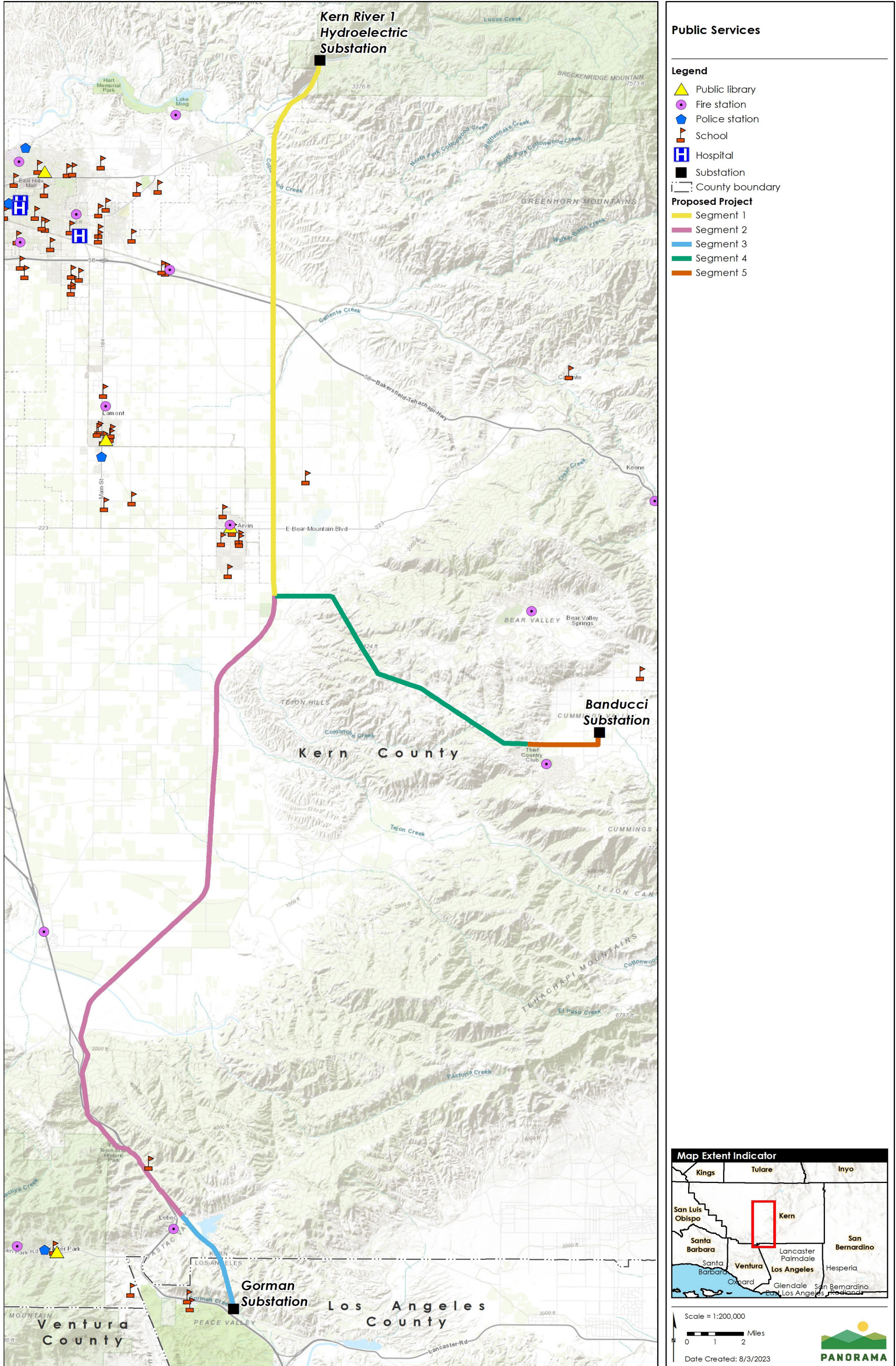
Table 3.15-1 Fire Stations in Proximity to the Proposed Project

Project segment or segment(s)	Name of proximate fire station	Address of proximate fire station	County location of proximate fire station	Approximate distance to Proposed Project (miles)
1	Bakersfield Fire Department Station #10	12100 Alfred Harrell Expressway, Bakersfield	Kern	3.7
1	KCFD Edison – Fire Station #45	11809 Edison Highway, Bakersfield	Kern	3.7
1	KCFD Arvin – Fire Station #54	301 Campus Drive, Arvin	Kern	1.5
1	KCFD Lamont – Fire Station #51	8225 McKee Road, Lamont	Kern	5.9
2	Tejon Ranch – Fire Station #55	5441 Dennis McCarthy Drive, Lebec	Kern	3.1
2, 3	Lebec – Fire Station #56	1545 Lebec Service Road, Lebec	Kern	0.5
3	Gorman – Fire Station #77	46833 Peace Valley Road, Gorman	Los Angeles	2.8
3	Frazier Park – Fire Station #57	729 W End Dr, Frazier Park	Kern	6.0
4, 5	Bear Valley – Station #16	28946 Bear Valley Road, Tehachapi	Kern	4.5
4, 5	Stallion Springs – Station #18	28381 Braeburn Place #22, Stallion Springs	Kern	0.8

Source: (Kern County Fire Department, 2022)

3.15 PUBLIC SERVICES

Figure 3.15-1 Public Services in Proximity to the Proposed Project



Source: (Oak Ridge National Laboratory, 2022; Kern County Planning and Community Development Department, 2014; County of Los Angeles, 2022; Kern County GIS, 2006; Kern County GIS, 2017; Los Angeles County GIS; Kern County GIS, 2018)

3.15 PUBLIC SERVICES

This page is intentionally left blank.

3.15 PUBLIC SERVICES

Police

The Kern County Sheriff’s Office (KCSO) provides police services in unincorporated Kern County and serves over 890,000 persons. The KCSO employs over 1,200 people and has 14 stations in Kern County (Kern County Sheriff’s Office, 2022). Average response times for the KCSO are approximately 5 minutes for emergency or immediate incidents, and 8 to 10 minutes for routine calls (Kern County, 2019). Several KCSO stations are located within proximity to the Proposed Project alignment. The closest KCSO stations to the Proposed Project are provided in Table 3.15-2. The locations of the nearby KCSO stations are also depicted in Figure 3.15-1.

The Los Angeles Sheriff’s Department (LASD) provides police services to unincorporated Los Angeles County. The LASD provides police services to more than 5 million people in 90 unincorporated communities and 40 cities. The LASD has 23 stations across the county. The nearest LASD station to the Proposed Project alignment is the Santa Clarita Valley station located approximately 30 miles southeast of Segment 3 (Los Angeles County Sheriff’s Department, 2019). Response times for the LASD and the Santa Clarita Valley patrol station are not publicly available.

Portions of the Proposed Project are located in the cities of Arvin and Bakersfield. The City of Arvin Police Department provides police services to the City of Arvin and serves approximately 20,000 persons (City of Arvin, 2022a). Response times for the City of Arvin Police Department are not publicly available. The City of Bakersfield Police Department provides police services throughout the City of Bakersfield and serves approximately 400,000 people (City of Bakersfield, 2002). Response times for the City of Bakersfield Police Department are less than 7 minutes city-wide (Dalu, 2023). The closest police stations to the Proposed Project are provided in Table 3.15-2. The locations of the police stations are depicted in Figure 3.15-1.

Table 3.15-2 Police Departments and Sheriff’s Office Stations in Proximity to the Proposed Project

Project segment(s)	Name of police department	Address of police station	Approximate distance to Proposed Project (miles)
1	Arvin Police Department	200 Campus Drive, Arvin	1.5
1	Bakersfield Police Department	1601 Truxtun Avenue, Bakersfield	12
1, 2	Lamont Station	12022 Main Street, Lamont	6.2
3	Frazier Park Station	617 Monterey Trail – Suite C, Frazier Park	4.6
4, 5	Tehachapi Station	22209 Old Town Road, Tehachapi	2.2

Source: (Kern County Sheriff’s Office, 2022; Bakersfield Police Department, 2022; City of Arvin Police Department, 2022)

3.15 PUBLIC SERVICES

Schools

The Proposed Project crosses through seven school districts within Kern County (Kern County, 2022). The portion of the alignment that traverses Los Angeles County is located in the Antelope Valley Union School District; however, there are no Los Angeles County schools near the Proposed Project alignment (County of Los Angeles, 2022). Table 3.15-3 provides an overview of the schools, locations, district, and grades as well as the approximate distance of each school in proximity to the Proposed Project. The locations of the schools are depicted in Figure 3.15-1.

Table 3.15-3 Schools in Proximity to the Proposed Project

Project segment(s)	Name	Address	School district	Grades	Approximate distance to the Proposed Project (miles)
1	Di Giorgio Elementary School	19405 Buena Vista Boulevard, Arvin	Di Giorgio Elementary	K–8	1.1
1	Haven Drive Middle School	341 Haven Drive, Arvin	Arvin Union Elementary	7–8	1.1
1	Sierra Vista Elementary School	300 Franklin Street, Arvin	Arvin Union Elementary	P–6	1.1
1	Grimmway Academy	901 Nectarine Court, Arvin	Arvin Union Elementary	K–8	1.5
1	Arvin High School	900 Varsity Road, Arvin	Kern Union High	9–12	1.5
2	El Tejon School	4337 Lebec Road, Lebec	El Tejon Unified	5–8	0.01
5	Cummings Valley Elementary School	24220 Bear Valley Road, Tehachapi	Tehachapi Unified School District	K–5	2.7

Source: (Kern County, 2022)

Parks

The Kern County Parks and Recreation Department manages approximately 4,726 acres of parks and open space. The Los Angeles Department of Parks and Recreation manages 73,214 acres of parkland and recreation space throughout the county (County of Los Angeles Parks & Recreation, 2023). Public parks, open spaces, and recreational areas in the vicinity of the Proposed Project are described in detail in Section 3.16 Recreation. Parks within 0.5 mile of the Proposed Project alignment include the Sequoia National Forest, Los Padres National Forest, and Fort Tejon State Historic Park. The locations of the parks are depicted in Figure 3.15-1.

3.15 PUBLIC SERVICES

Hospitals

The closest hospital to the Proposed Project alignment is the Tehachapi Hospital, which is located approximately 9 miles east of the existing SCE Banducci substation (Kern County, 2022). Several hospitals are located within the City of Bakersfield (Kern County, 2022). The nearest hospital in the City of Bakersfield is the Kern Medical hospital, located approximately 9 miles west of the Proposed Project. The City of Arvin does not contain any hospitals. There are no hospitals within the vicinity of the Proposed Project in Los Angeles County. The locations of the hospitals in proximity to the Proposed Project are depicted in Figure 3.15-1.

3.15.2 Applicable Regulations, Policies and Standards

Federal, state, and local regulations were reviewed for applicability to the Proposed Project.

Federal and State Regulations, Policies, and Standards

There are no federal or state laws or regulations pertaining to public services that are applicable to the Proposed Project.

Local Regulations, Policies, and Standards

The CPUC has sole and exclusive State jurisdiction over the siting and design of the Proposed Project because it authorizes the construction, operation, and maintenance of investor-owned public utility facilities. Pursuant to GO 131-D section XIV.B, "Local jurisdictions acting pursuant to local authority are preempted from regulating electric power line projects, distribution lines, substations, or electric facilities constructed by public utilities subject to the CPUC's jurisdiction. However, in locating such projects, the public utilities shall consult with local agencies regarding land use matters." Consequently, public utilities are directed to consider local regulations and consult with local agencies, but the counties' and cities' regulations are not applicable as the counties and cities do not have jurisdiction over the Proposed Project. Accordingly, the following discussion of local land use laws, regulations, and policies is provided for informational purposes only.

Kern County General Plan

The Kern County General Plan lays out policies for providing adequate public services and facilities for Kern County residents. The Land Use, Open Space, and Conservation Element and the Safety Element of the Kern County General Plan contain policies, implementation measures, and goals related to public services relevant to the Proposed Project.

Applicable Land Use, Open Space, and Conservation Element policies and implementation measures are as follows:

Policies

- The County will ensure adequate fire protection to all Kern County residents.
- The County will ensure adequate police protection to all Kern County residents.
- Provide recreation opportunities for all citizens of Kern County while avoiding duplication between jurisdictions.

3.15 PUBLIC SERVICES

Implementation measures

- Prior to the approval of development projects, the County shall determine the need for fire protection services. New development in the County shall not be approved unless adequate fire protection facilities and resources can be provided.
- Ensure that the Superintendent of Schools and the respective school districts are informed of development proposals and are afforded the opportunity of evaluating their potential effect on the physical capacity of school facilities.

Applicable Safety Element goals, policies, and implementation measures are as follows:

Goals

- Ensure that adequate emergency services and facilities are available to the residents of Kern County through the coordination of planning and development of emergency facilities and services.

Policies

- Require discretionary projects to assess impacts on emergency services and facilities.
- Ensure that new development of properties have sufficient access for emergency vehicles and for the evacuation of residents
- All discretionary projects shall comply with the adopted Fire Code and the requirements of the Fire Department

Implementation Measures

- Require that all development comply with the requirements of the Kern County Fire Department or other appropriate agency regarding access, fire flows, and fire protection facilities.

Kern County Fire Department 2020 Strategic Fire Plan

The Kern County Fire Department 2020 Strategic Fire Plan was updated in April 2020 and documents the assessment of the wildland fire situation throughout the SRA within Kern County. The plan includes stakeholder contributions and priorities and identifies strategic targets for pre-fire solutions. The goal of the plan is to reduce costs and losses from wildfire by protecting assets at risk through pre-fire management prescriptions and increasing initial attack success. The plan assesses the existing levels of wildland protection services and identifies high-risk and high-value areas that are potential locations for costly and damaging wildfires.

Kern County Capital Improvement Plan

A proposed countywide *capital improvement plan* (CIP) was presented to the Kern County Board of Supervisors on October 9, 2007, and adopted in 2008. The CIP represents the best current understanding regarding new public facilities that will be needed to serve projected development in the County through 2030. The scope of services includes parks, libraries, a sheriff's office (public protection and investigation), a fire department, animal control, public health, landfill/transfer facilities, and general government.

3.15 PUBLIC SERVICES

Los Angeles General Plan

The Los Angeles General Plan provides goals, policies, implementation programs for providing adequate public services and facilities for Los Angeles County residents. The Parks and Recreation Element and Public Services and Facilities Element contain policies and goals related to public services relevant to the Proposed Project.

The applicable Parks and Recreation Element policy is as follows:

- Ensure that County parks and recreational facilities are clean, safe, inviting, usable and accessible.

Applicable Public Services and Facilities Element goals and policies are as follows:

Goal

- A County with adequate educational facilities

Policies

- Discourage development in areas without adequate public services and facilities.
- Ensure that adequate services and facilities are provided in conjunction with development through phasing or other mechanisms
- Ensure a desired level of library service through coordinated land use and facilities planning.

Applicable Safety Element policies are as follows:

- Ensure that there are adequate resources, such as sheriff and fire services, for emergency response.
- Ensure that residents are protected from the public health consequences of natural or human-made disasters through increase readiness and response capabilities, risk communication, and the dissemination of public information

Metropolitan Bakersfield General Plan

The Metropolitan Bakersfield General Plan contains the Safety Element and Parks Element, which provides goals and policies for providing adequate public services and facilities for the City of Bakersfield (City of Bakersfield, 2002). The following policies and goals related to public services are relevant to the Proposed Project.

The applicable Safety Element goal and policy are as follows:

Goals

- Ensure that adequate police and fire services and facilities are available to meet the needs of current and future metropolitan residents through the coordination of planning and the development of metropolitan police and fire facilities and services.

Policies

- Require discretionary projects to assess impacts on police and fire services and facilities.

3.15 PUBLIC SERVICES

The applicable Parks Element goal is as follows:

Goal

- Provide parks and recreation facilities to meet the planning area’s diverse needs.

City of Arvin General Plan

The City of Arvin General Plan discusses goals, objectives, and policies that ensure the availability of public services for its residents.

The applicable policies are as follows:

Policies

- Ensure all new development provides adequate access for emergency vehicles and evacuation.
- Continue to coordinate fire protection services with Kern County Fire Department to ensure sufficient capacity, stations, personnel, and equipment are available to meet growth needs in Arvin for fire protection and related emergency services.

3.15.3 Applicant Proposed Measures

SCE has proposed measures to reduce environmental impacts. The significance of the impact is first considered prior to application of applicant proposed measures (APMs) and a significance determination is made. The implementation of the APMs is then considered as part of the Proposed Project when determining whether impacts would be significant and thus would require mitigation. These APMs would be incorporated as part of any CPUC project approval, and SCE would be required to adhere to the APMs as well as any identified mitigation measures. The APMs are included in the MMRP for the Proposed Project, and the implementation of the measures would be monitored and documented in the same manner as mitigation measures. The APMs that are applicable to the public services analysis are provided in Table 3.15-5.

Table 3.15-4 Applicant Proposed Measures Relevant to Public Services Analysis

APM number	Requirements
HAZ-3	<p>Prepare and Implement a Project-specific Fire Management Plan (Plan). A Fire Prevention and Emergency Response Plan will be developed to ensure the health and safety of construction workers, SCE personnel, and the public during Project construction. The Plan shall cover the following:</p> <ul style="list-style-type: none">• The purpose and applicability of the plan• Responsibilities and duties• Project areas where the plan applies• Procedures for incorporating red flag warnings, fire potential index (FPI), <i>project activity level</i> (PAL), and equivalent indicators in determining fire weather related work restrictions• Procedures for fire reporting, response, prevention, and evacuation routes• Coordination procedures with federal and local fire officials• Crew training, including fire safety practices and restrictions

3.15 PUBLIC SERVICES

APM number	Requirements
	<ul style="list-style-type: none"> • Fire suppression and communication equipment required to be on hand during construction • Method for verification that Plan protocols and requirements are being followed • Post-construction fire prevention and response measures <p>The Project-specific Fire Prevention and Emergency Response Plan for construction of the project will be prepared by SCE and submitted to CPUC, CALFIRE, Inyo, Kern and San Bernardino counties, and local municipal fire agencies for review at least 30 days prior to initiation of construction. SCE will address all comments received from reviewing agencies and provide the final Fire Prevention and Emergency Response Plan to reviewing agencies for approval prior to initiating construction activities.</p>
TRA-1	<p>SCE will implement traffic control measures consistent with those published in the Manual on Uniform Traffic Control Devices, as written and amended by Caltrans for the state of California (CA MUTCD), and using standard templates from the California Temporary Traffic Control Handbook (CATTCH) (California Inter-Utility Coordinating Committee, 2018). These measures will be implemented as and where necessary as described in the CA MUTCD and/or CATTCH, or in ministerial permits.</p>

3.15.4 Environmental Analysis

Summary of Impacts

Table 3.15-5 presents a summary of the CEQA significance criteria and impacts on public services that would occur during construction and operation and maintenance (O&M) of the Proposed Project.

3.15 PUBLIC SERVICES

Table 3.15-5 Summary of Proposed Project Impacts to Public Services

Would the proposed project:	Potentially Significant Impact	Less than Significant Impact with Mitigation Incorporated	Less than Significant Impact	No Impact
a) Result in substantial adverse physical impacts associated with the provision of new or physically altered governmental facilities, need for new or physically altered governmental facilities, the construction of which could cause significant environmental impacts, in order to maintain acceptable service ratios, response times or other performance objectives for any of the public services: i. Fire protection? ii. Police protection? iii. Schools? iv. Parks? v. Other public facilities?	<input type="checkbox"/>	<input checked="" type="checkbox"/>	<input type="checkbox"/>	<input type="checkbox"/>

Impact Discussion

a) Result in substantial adverse physical impacts associated with the provision of new or physically altered governmental facilities, need for new or physically altered governmental facilities, the construction of which could cause significant environmental impacts, in order to maintain acceptable service ratios, response times or other performance objectives for any of the public services:

- i. Fire protection?**
- ii. Police protection?**
- iii. Schools?**
- iv. Parks?**
- v. Other public facilities?**

Construction

Fire Protection

Portions of the Proposed Project are located in areas of high risk for wildland fire. Sparks from construction equipment or personnel smoking during construction could potentially ignite a wildfire (refer to Section 3.20 Wildfire). The Proposed Project would have a significant impact on fire protection services were a large-scale fire to be ignited by construction, resulting in an increased demand for fire response in the Proposed Project area.

3.15 PUBLIC SERVICES

Vegetation clearing activities would be implemented prior to the staging of equipment in order to minimize the potential for vehicles or equipment to start a fire. In the event of a red flag warning during construction of the Proposed Project, additional measures would be implemented to address smoking and fire rules, storage and parking areas, the use of gasoline-powered tools, the use of spark arrestors on construction equipment, road closures, the use of a fire guard, fire suppression tools, fire suppression equipment, and training requirements. APM HAZ-3 would be implemented as part of the Proposed Project and requires the preparation of a Fire Prevention and Emergency Response Plan prior to construction. The Fire Prevention and Emergency Response Plan includes fire response and reporting procedures, crew training, procedures for fire-weather related work restrictions, and coordination procedures with appropriate federal, state, and local fire officials. With implementation of APM HAZ-3 and vegetation clearing at workspaces to avoid increased fire risk, construction of the Proposed Project would result in a less-than-significant impact on fire risk and associated increased demand for fire protection services. The impact on demand for fire response during construction would be less than significant.

Police

The materials for the Proposed Project construction would be staged and stored within secure staging areas. The staging areas would be secured through installation of temporary perimeter fencing and one or more gates; typically, chain-link fencing would be used. Other security measures that may be employed at staging areas could include cameras, privacy screening, and security personnel. Through use of proper security measures, the staging of construction materials would not create an increased demand for police protection services. The impact on police demand would be less than significant.

Emergency Response

Guard structures would be installed at road crossings to help keep the existing conductors and the newly installed conductors from coming in contact with the ground and to maintain vehicle access to the extent feasible. Construction of the Proposed Project would require temporary closures of lanes and roads where needed to protect public safety during conductor installation and removal activities. Temporary lane or road closures could affect the response times of emergency vehicles if an emergency were to occur in the area at the time of lane or road closure. Delays to emergency vehicles resulting from lane and road closures could result in a significant impact to emergency response times. SCE would implement APM TRA-1 as part of the Proposed Project. APM TRA-1 requires SCE to implement traffic control measures consistent with those published by Caltrans in the Manual on Uniform Traffic Control devices. Implementation of APM TRA-1 would reduce impacts to emergency access, but impacts would remain potentially significant. Mitigation Measure Traffic-1 requires the implementation of a Traffic Control Management Plan (TCMP), which would require the use of flaggers to avoid potential accidents, the use of temporary traffic detours to redirect traffic during temporary road closures, advanced notification of closures to all emergency services, and coordination with emergency services. Mitigation Measure Traffic-3 further requires advance notice to emergency services of all road closures to allow emergency services agencies to plan alternate

3.15 PUBLIC SERVICES

routes for use during temporary road closures. Impacts on emergency response times would be less than significant with implementation of Mitigation Measures Traffic-1 and Traffic-3.

Schools and Parks

The Proposed Project would not include any new homes, businesses, or land use changes that would directly or indirectly induce substantial population growth in the area. The majority of the construction workforce would be hired from the local labor force or would commute from nearby cities. Construction activities would not result in an increase in the local population that could create a demand for new services or facilities. Construction workers would not introduce additional school-aged children to area schools. Therefore, the Proposed Project would not precipitate the need to expand schools or create a need for new parks.

Construction of the Proposed Project would not permanently impact any trails or parks. As discussed in Section 3.16 Recreation, a portion of the Fort Tejon State Historic Park parking lot would be temporarily closed for approximately 2 days for conductor removal and installation activities. Generally, conductor removal and installation would occur at nighttime due to the proximity of the Project site to I-5. Therefore, the conductor activities would likely occur while the park is closed. If the conductor removal and installation activities occurred during the daytime, Mitigation Measure Recreation-1 would be implemented, requiring SCE to notify the State Park 60 days prior to the start of construction and to notify the public 14 days prior to construction. Mitigation Measure Recreation -1 also requires restoration of the Fort Tejon State Historic Park parking lot that would be physically impacted by construction. Impacts from the need for new or physically altered parks would be less than significant with implementation of Mitigation Measure Recreation-1.

Operation and Maintenance

Operation and maintenance (O&M) activities for the Proposed Project would be similar to the O&M activities of the existing subtransmission lines. The Proposed Project consists of an unattended subtransmission line, which would not require additional police or fire protection services. Maintenance activities may require temporary lane or road closures similar to maintenance of the existing subtransmission lines; however, the frequency of maintenance activities would likely reduce immediately following construction as the new infrastructure would require less maintenance than the aging infrastructure that currently occurs in the area. The Proposed Project would not create any permanent employment and would not result in population increase; therefore, no new or physically altered parks, schools, hospitals, or other public facilities would be necessary. Thus, impacts to public facilities from operation and maintenance would be less than significant. No mitigation is required.

Required APMs and MMs: APM HAZ-3, APM TRA-1, MM Recreation-1, MM Traffic-1 and Traffic-3

3.15 PUBLIC SERVICES

3.15.5 References

- Bakersfield Police Department. (2022, May 4). *About Bakersfield Police Department (BPD)*. Retrieved from <https://www.bakersfieldcity.us/485/About-Bakersfield-Police-Department-BPD>.
- California Inter-Utility Coordinating Committee. (2018, May). *California Temporary Traffic Control Handbook*. Retrieved September 8, 2023, from <https://workzonesafety.org/publication/california-joint-utility-traffic-control-manual/>.
- Center for Public Safety Management, LLC. (2017). *Operational and Administrative Analysis Kern County, California Final Report*. Retrieved September 8, 2023, from <https://www.cpsm.us/wp-content/uploads/2019/08/Kern-County-Final-Report.pdf>.
- City of Arvin. (2022a). *Police*. Retrieved May 18, 2022, from <https://www.arvin.org/181/Police>.
- City of Arvin. (2022b). *Departments*. Retrieved May 4, 2022, from <https://www.arvin.org/149/Departments>.
- City of Arvin Police Department. (2022, May 4). *Police*. Retrieved from <https://www.arvin.org/181/Police>.
- City of Bakersfield. (2002, December). *Metropolitan Bakersfield General Plan*. Retrieved September 8, 2023, from <https://www.bakersfieldcity.us/271/Adopted-Planning-Documents>.
- County of Los Angeles. (2013). Los Angeles Fire Department Response Time Lag. *2012-2013 Los Angeles County Civil Grand Jury Report*.
- County of Los Angeles. (2022). *LA County eGIS Program*. Retrieved May 5, 2022, from School District Boundaries: <https://egis-lacounty.hub.arcgis.com/datasets/lacounty::school-district-boundaries-2/explore?location=34.823348%2C-118.682080%2C10.67>.
- County of Los Angeles. (2022, April 19). *Public Elementary Schools*. Retrieved from https://public.gis.lacounty.gov/public/rest/services/LACounty_Dynamic/LMS_Data_Public/MapServer.
- County of Los Angeles Fire Department. (2020). *2020 Statistical Summary*. Retrieved from <https://fire.lacounty.gov/wp-content/uploads/2021/06/2020-Statistical-Summary-FINAL-DRAFT.pdf>.
- County of Los Angeles Parks & Recreation. (2023, March). *The County of Los Angeles Department of Parks and Recreation Strategic Plan*. Retrieved September 8, 2023, from <https://parks.lacounty.gov/strategicplan/>.
- Dalu, O. (2023, April 8). BPD considers improving response times amid staff shortages. KGET. Retrieved from <https://www.kget.com/news/local-news/bpd-considers-improving-response-times-amid-staff-shortages/>.

3.15 PUBLIC SERVICES

- Kern County. (2019). Grapevine Project Final Environmental Impact Report. Retrieved from https://psbweb.co.kern.ca.us/UtilityPages/Planning/EIRS/grapevine_sreir/Vol5/Grapevine-1-11_DEIR.pdf.
- Kern County. (2022). *Kern County GIS*. Retrieved May 5, 2022, from <https://maps.kerncounty.com/H5/index.html?viewer=KCPublic>.
- Kern County Fire Department. (2022). *About the Kern County Fire Department*. Retrieved May 4, 2022, from Department Profile: <https://kerncountyfire.org/about-kcfd/>.
- Kern County GIS. (2006, November 22). Sheriff Stations.
- Kern County GIS. (2017, May 17). Fire Stations. Retrieved from <https://services5.arcgis.com/Y8jwjGUWbRjuqpG5/arcgis/rest/services>.
- Kern County GIS. (2018, August 29). Public Libraries. Retrieved from https://services5.arcgis.com/Y8jwjGUWbRjuqpG5/ArcGIS/rest/services/PUBLIC_LIBRARIES/FeatureServer/0.
- Kern County Planning and Community Development Department. (2014, December). Kern Schools.
- Kern County Sheriff's Office. (2022). *Human Resources*. Retrieved May 4, 2022, from https://www.kernsheriff.org/Human_Resources.
- Los Angeles County GIS. (n.d.). Fire Stations. Retrieved from https://public.gis.lacounty.gov/public/rest/services/LACounty_Dynamic/LMS_Data_Public/MapServer.
- Los Angeles County Sheriff's Department. (2019). Patrol Stations. Retrieved May 4, 2022, from <https://lasd.org/stations/>.
- Oak Ridge National Laboratory. (2022, June 1). Hospitals. Homeland Infrastructure Foundation-Level Database.