

CPUC Public Meeting for Project Scoping

**San Diego Gas & Electric Company
Salt Creek Substation and
5-mile, 69-kV Power Line Project**

Application No. 13-09-014

California Public Utilities Commission

November 21, 2013



Meeting Purpose: Scoping

- **Initiating the California Environmental Quality Act (CEQA) Process**
- **Describe the proposed SDG&E Salt Creek Substation and 5-mile, 69-kV Power Line Project**
- **Describe the CEQA environmental review process**
- **Identify opportunities for public comments**
- **Receive comments on the scope and content of the environmental document**



Roles



California Public Utilities Commission (CPUC):
Lead Agency under CEQA



Panorama Environmental, Inc.:
Environmental Contractor for CPUC



San Diego Gas & Electric Company (SDG&E):
Project Applicant

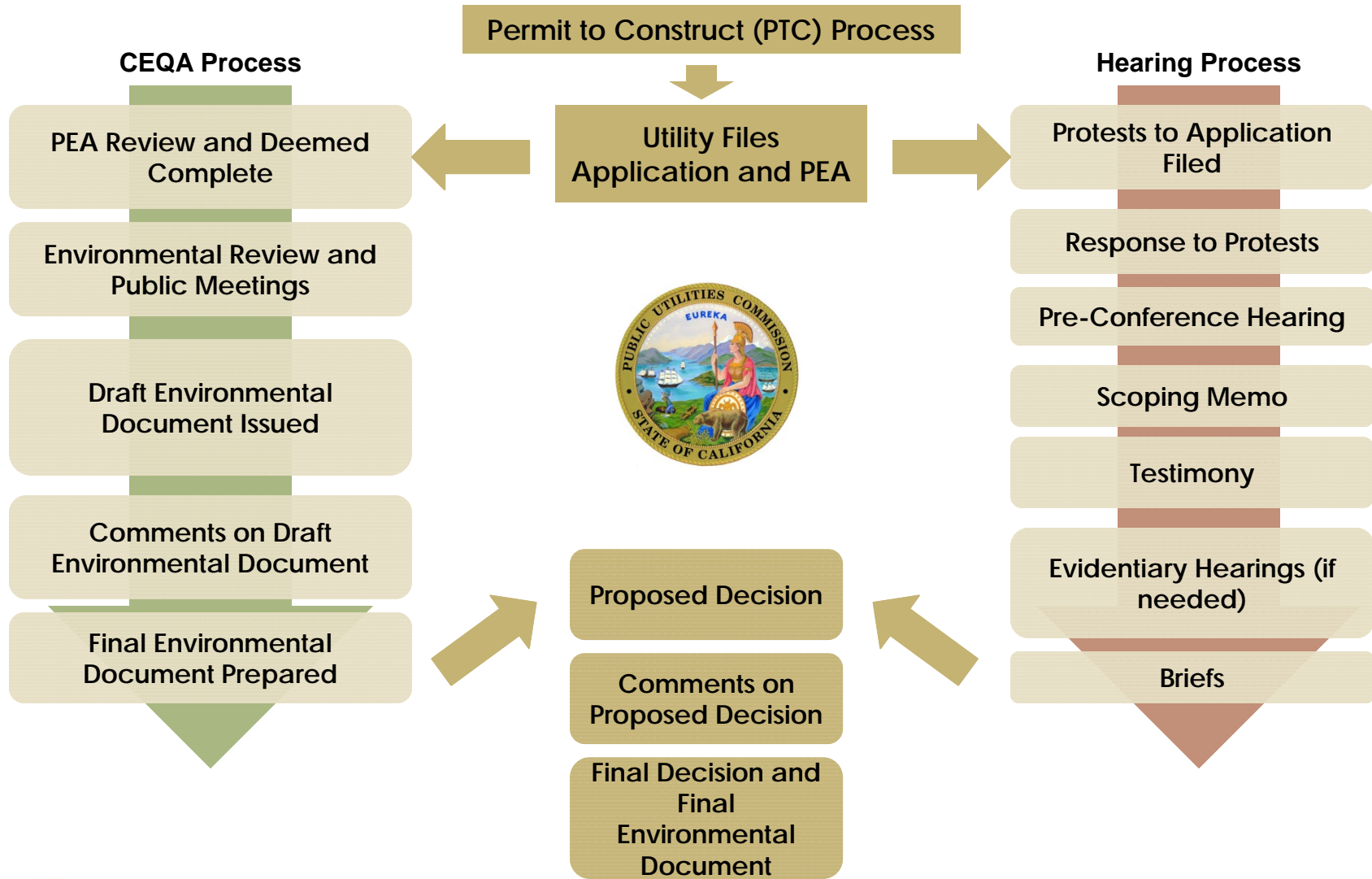


CPUC Process

- **Investor-owned utilities must submit a permit application to CPUC for construction of certain infrastructure listed under Public Utilities Code Section 1001**
- **SDG&E filed an Application consisting of:**
 - **Application for Permit to Construct (PTC) the project**
 - **A Proponent's Environmental Assessment (PEA)**
- **CPUC has authority to approve or deny the Application**
- **CPUC permit application review involves:**
 - **Environmental Review (CEQA)**
 - **CPUC Proceeding**



CPUC Processes



Proposed Project Application

- **SDG&E submitted an application for a Permit to Construct the Salt Creek Substation and 5-mile power line (TL 6965)**
- **The application includes a PEA**
- **Public can access the application and PEA at:**

www.cpuc.ca.gov/Environment/info/panoramaenv/Salt_Creek/index.html

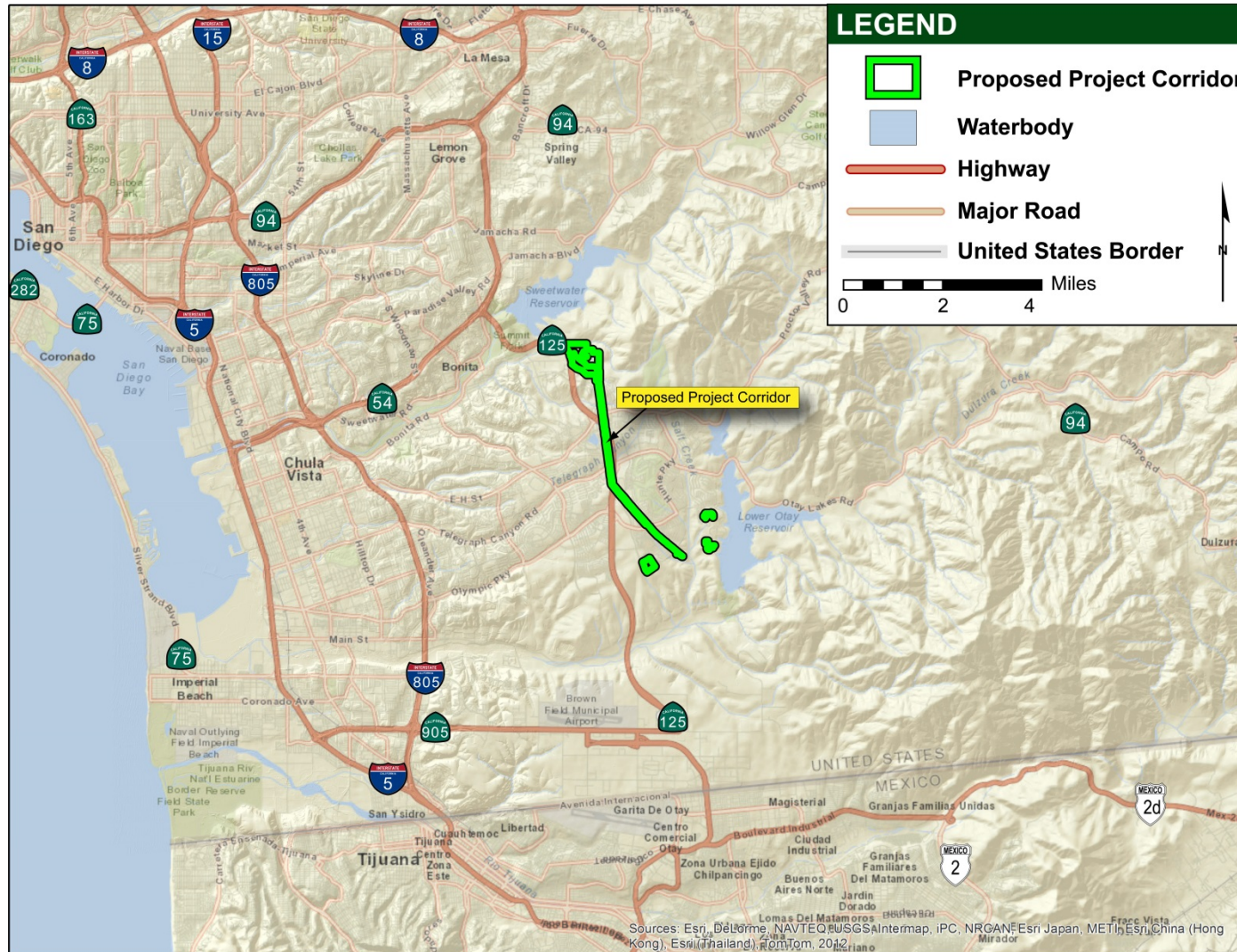


SDG&E Project Objectives

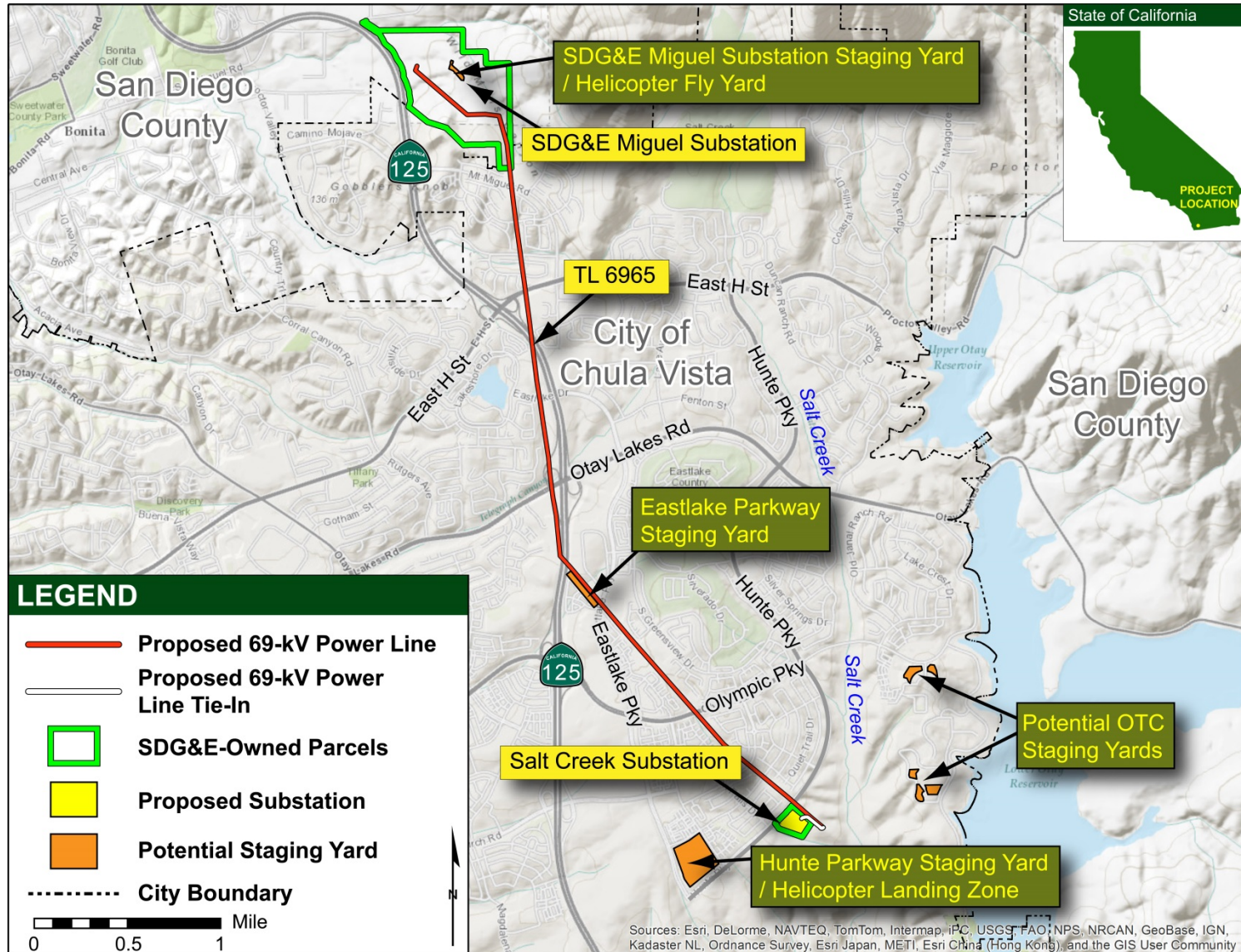
- **Add additional capacity**
 - **Provide additional capacity to serve existing area electrical load and future electrical load growth**
- **Improve service reliability**
 - **Enhance distribution and power network to decrease potential for long-term outages or service disruptions to existing customers in southeastern Chula Vista SDG&E service territory**



Where is the Proposed Project?



What Does the Proposed Project Include?



Proposed Project Components



New Salt Creek Substation

- 120-MVA 69/12-kV substation on 11.6 acres of undeveloped land
- Three underground 12-kV distribution circuits
- TL 6910 loop-in



New Transmission Line 6965

- 5-mile, single-circuit, 69-kV power line within existing transmission corridor from Miguel Substation to Salt Creek Substation
- Aboveground on power poles; southernmost 720 feet underground



Miguel Substation Modification

- Minor construction to connect to TL 6965
- Pole-top work on existing structures



Project Construction Overview

Construction Schedule

- About 18 to 24 months from start to finish
- Anticipated to begin late 2014
- Anticipated to finish mid-2016

Workforce

- Up to 35 workers on site at any one time

Work Hours

- Monday to Friday, 7 a.m. to 7 p.m.
- Saturday, 8 a.m. to 7 p.m.
- Some concrete pours, transformer oil filling, and conductor stringing may require extended work hours

Equipment

- Variety of general construction vehicles
- Helicopters may be used for stringing power line

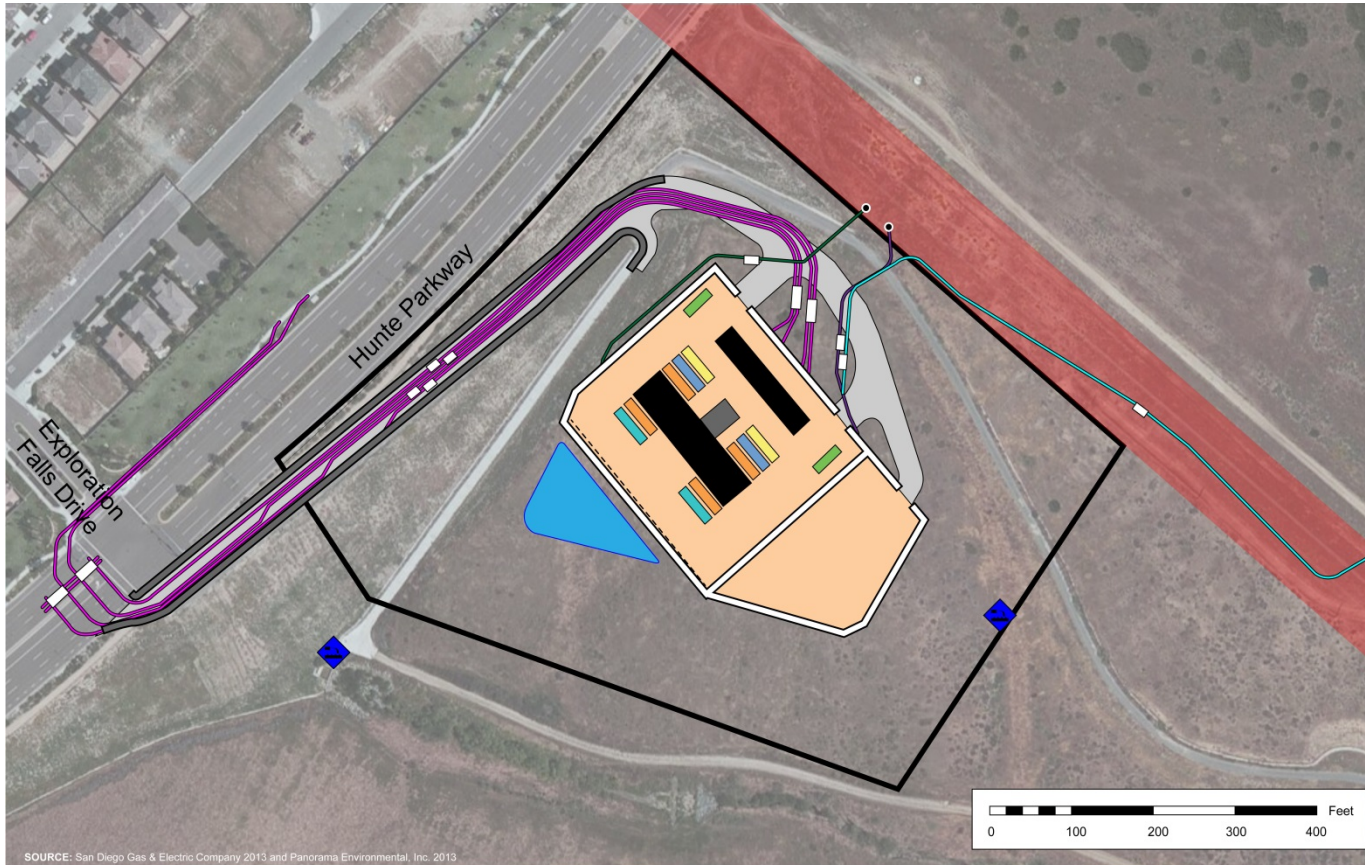


Salt Creek Substation

- 11.6-acre site southeast of Hunte Parkway
- Extensive site selection process
- Grading to accommodate the substation and supporting infrastructure
- Widening and grading existing access road
- Installation of three underground 12-kV distribution lines
- Connection of substation to existing 69-kV power line (TL 6910) and new 69-kV power line (TL 6965)
- **Construction Duration:
18 to 24 months**



Salt Creek Substation Layout



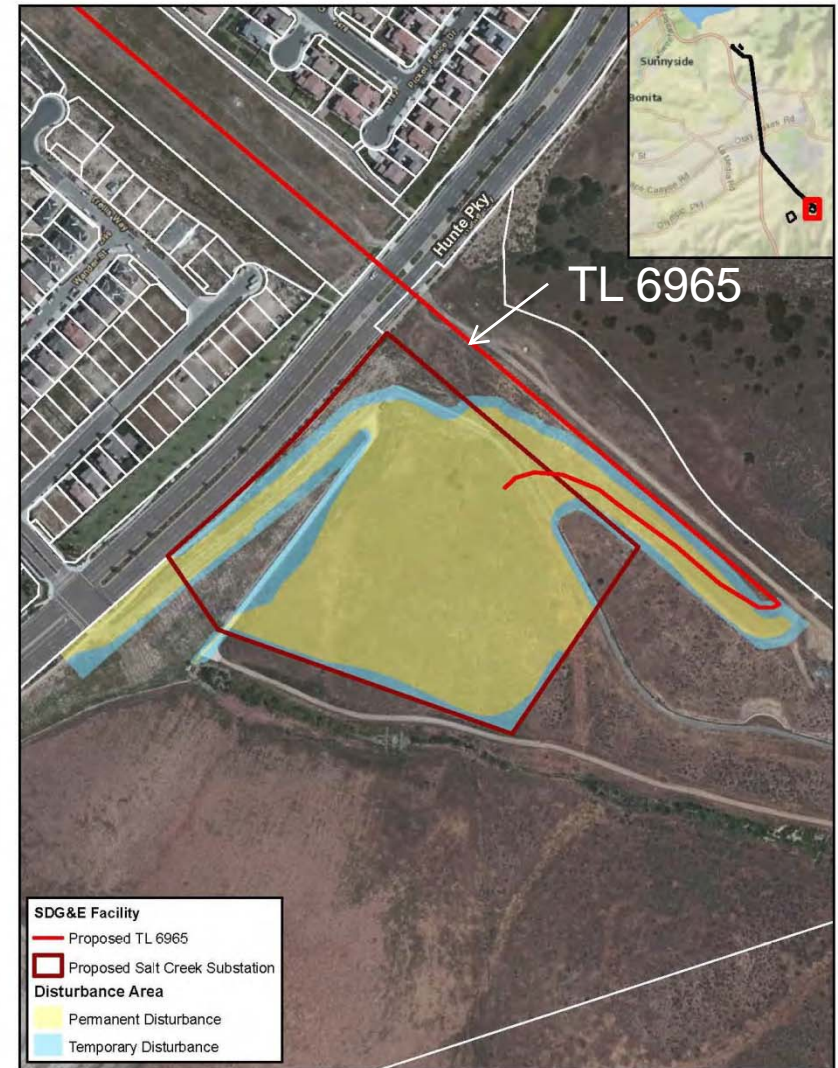
SOURCE: San Diego Gas & Electric Company 2013 and Panorama Environmental, Inc. 2013

LEGEND			
	Tie-Line 6964		Substation Parcel
	Tie-Line 6910		Substation Footprint with 10 foot Wall
	Tie-Line 6965		Control Building
	12-kV Distribution Line		Vault or Manhole
	12-kV Cap Banks		Transformers
	12-kV Termination Risers		69-kV Circuit Breakers
	Transformers		69-kV Termination Risers
	69-kV Circuit Breakers		Switchgears
	69-kV Termination Risers		Access Road
	Switchgears		Access Road Wall
	Access Road		Storm Drain Outfall
	Access Road Wall		Water Quality Basin
	Storm Drain Outfall		SDG&E Right-of-Way
	Water Quality Basin		Cable Pole
	SDG&E Right-of-Way		Global Containment
	Cable Pole		
	Global Containment		



Transmission Line 6965

- 5-mile, single-circuit, 69-kV power line
- Hunte Parkway to Miguel Substation (northern border of Chula Vista)
- East of existing 230-kV lines in 120-foot-wide SDG&E right-of-way
- 41 new galvanized steel poles
- 2 new cable poles for TL 6910



Source: GeomorphIS LLC, AECOM, SDG&E, 2013; Esri BaseMap, 2013

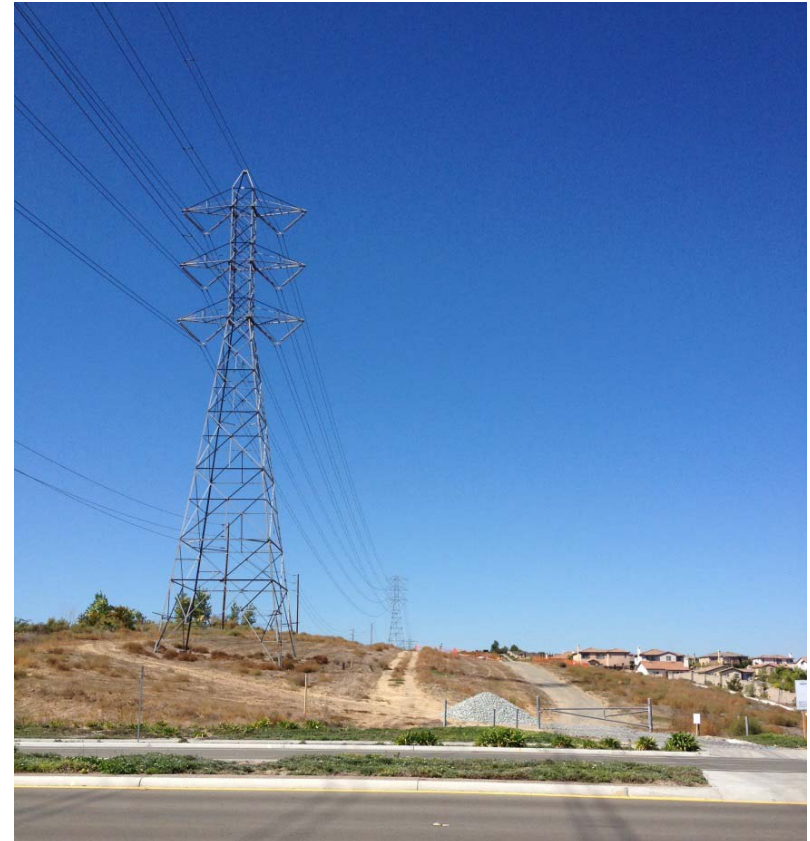
Figure 3.7
Salt Creek Substation Temporary and Permanent Disturbance Areas

SDG&E is providing this map with the understanding that the map is not survey grade.



Transmission Line 6965 (cont.)

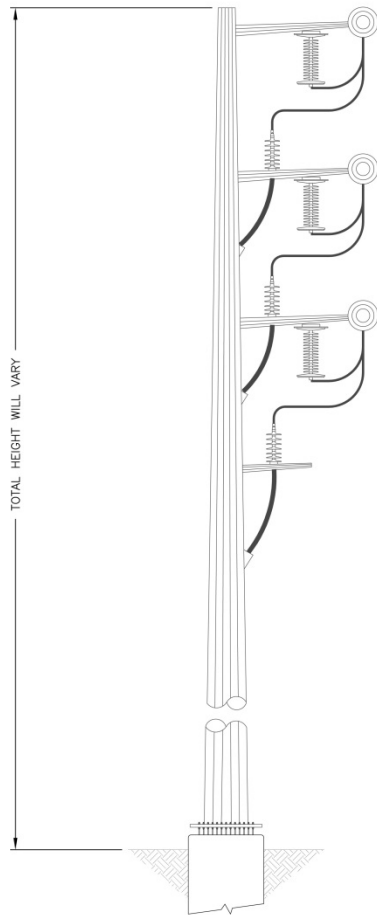
- Majority of power line would be within City of Chula Vista
- Northern portion of the line would be within unincorporated San Diego County and would connect to Miguel Substation
- **Construction Duration: 18 to 24 months**



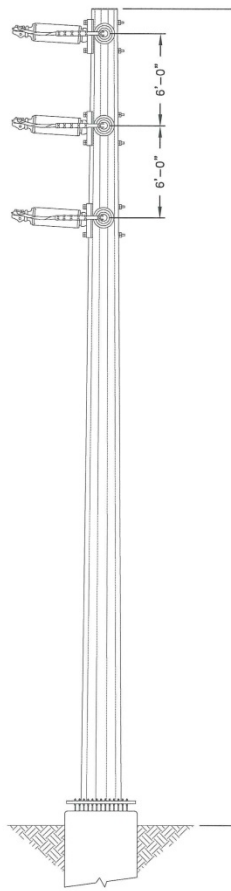
Transmission line corridor looking north



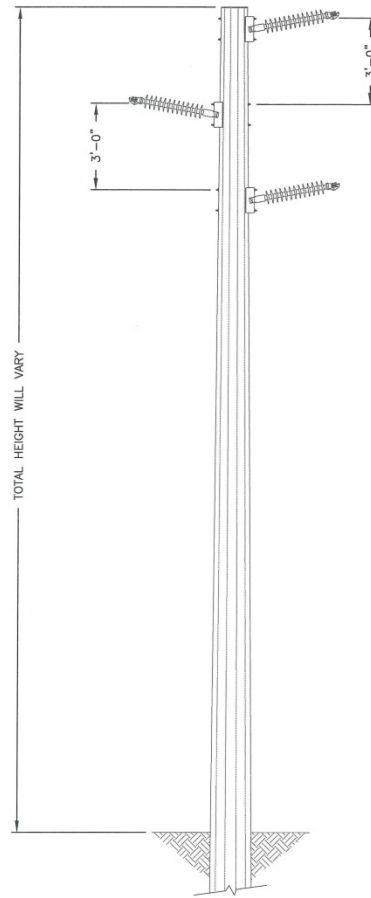
Typical Transmission Line Poles



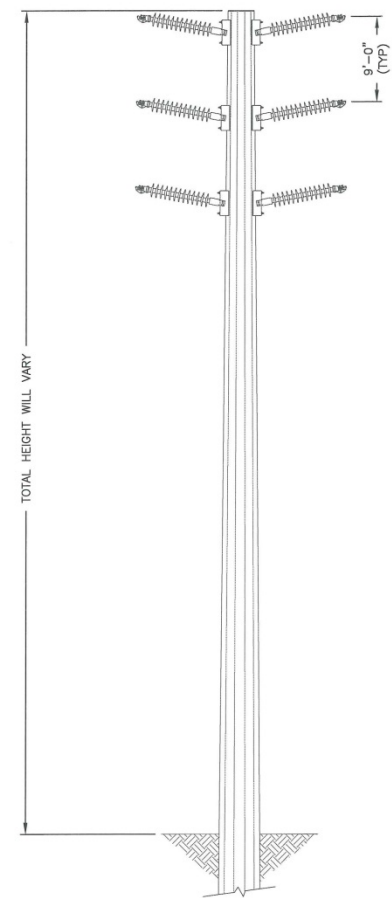
Typical Engineering Foundation Cable Pole (69-kV)
(3 poles)



Typical Single-Circuit Engineering Foundation Pole (69-kV)
(10 poles)



Typical Directly Embedded Single-Circuit Pole (69-kV)
(30 poles)

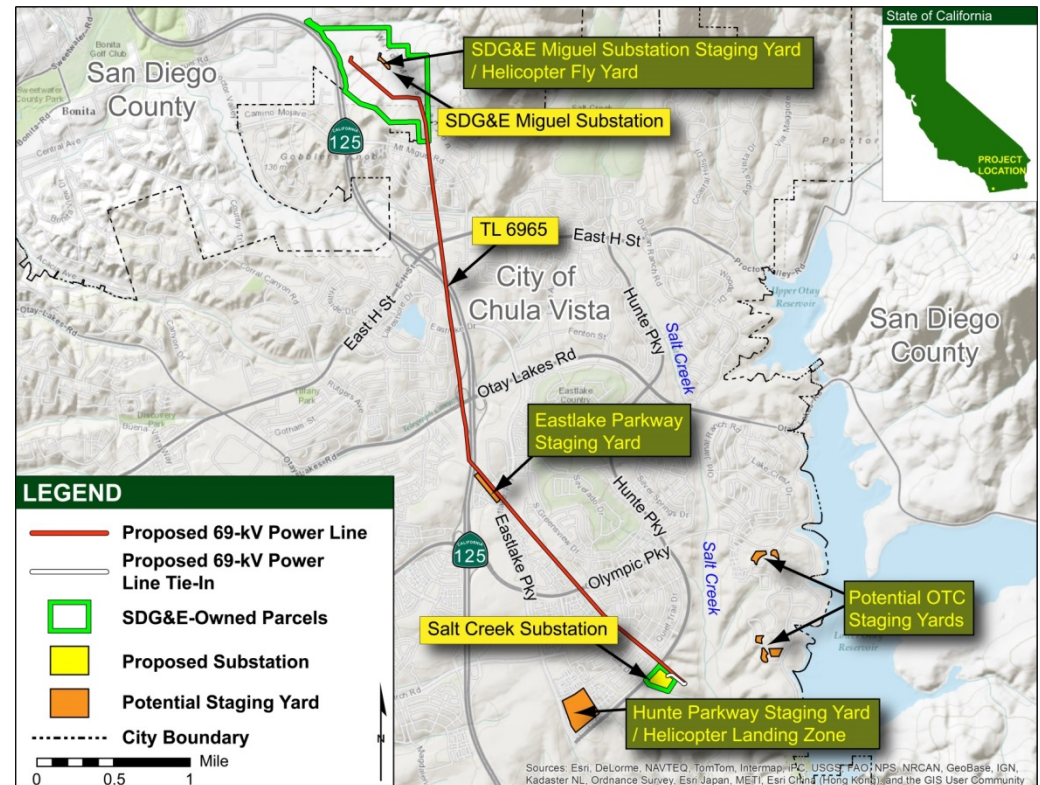


Typical Directly Embedded Double-Circuit Pole (69-kV)
(7 existing poles)

SOURCE: San Diego Gas & Electric Company 2013

Other Project Components

- **Staging yards/
Equipment laydown
areas:**
 - **Hunte Parkway Staging
Yard**
 - **Eastlake Staging Yard**
 - **Miguel Substation
Staging Yard**
 - **Olympic Training Center
Staging Yards (alternate)**
- **Stringing sites**
- **Helicopter landing
zones/fly yards**
- **Access roads**



Project Operation and Maintenance

- **Substation would be unattended, automated, and operated remotely (no on-site staff)**
- **Regular maintenance would occur at the new substation and along the new power line**
- **Vegetation would be trimmed regularly, per SDG&E protocols**
- **Equipment would be repaired and/or replaced as needed**
- **Aerial and ground inspections would occur regularly**



CEQA Environmental Review Document

Project Description

- Define project:
 - Objectives
 - Components
 - Construction methods

Environmental Setting

- Define existing environmental setting where project would be constructed

Impact Analysis

- Determined during review under CEQA
- Based on information from:
 - SDG&E's PEA
 - SDG&E's Data Responses
 - CPUC's additional research



CEQA Environmental Review Document

Topics:

Aesthetics

Land use and planning

Agriculture and forestry resources

Mineral resources

**Air quality/greenhouse
gas emissions**

Noise

Biological resources

Population and housing

Cultural resources

**Public services
(fire, police, schools, parks)**

Geology and soils

Recreation

Hazards and hazardous materials

Transportation and traffic

Hydrology and water quality

**Utilities and service systems
(water, wastewater, solid waste)**



CEQA Environmental Review Document

Applicant Proposed Measures (APMs)

- Include APMs and Project Design Features proposed by SDG&E and included in the PEA
- Considered part of the project
- Intended to reduce impacts of the project

Mitigation Measures

- Developed by CPUC
- Mitigate significant impacts to environmental resources
- May be required in addition to APMs



Public Participation During Environmental Review

- **Comment on the scope of the CEQA environmental analysis**
- **Comments accepted until December 21**
- **The draft CEQA document will be available for public review and comment**
 - **Notices will be mailed when the document is published**
- **Public comments and responses to comments will be incorporated into the final document**



Schedule

Activity	Date
SDG&E Submits Application	September 25, 2013
CPUC Scoping Meeting	November 21, 2013
Close of Scoping/Public Comments	December 21, 2013
CPUC Publishes CEQA document	Spring 2014
Public Review and Comment	Spring 2014
CPUC Publishes Final CEQA Document	Summer 2014
CPUC Decision	Fall 2014
SDG&E Start of Construction	Fall 2014
Construction Complete	Spring 2016



How Can You Provide Comments?

- Oral comments and questions tonight
- Fill out a comment card to submit written comments and questions tonight
- Submit comments after this meeting by mail, phone, or email

Mail	Voice Mail/Fax	Email
Mr. Jason Coontz CPUC c/o Panorama Environmental, Inc. One Embarcadero Center #740 San Francisco, CA 94111	(650) 373-1200 ext. 102 (650) 373-1211 fax	saltcreeksub@ panoramaenv.com

- **Comments due by 5:00 p.m. on December 21, 2013**
- For more information, go to:
http://www.cpuc.ca.gov/Environment/info/panoramaenv/Salt_Creek/index.html



Oral Comment Guidelines



- **State name and affiliation**
- **One person speaks at a time**
- **Avoid side conversations**
- **Keep input concise (to maximize participation)**
- **No clapping or booing**
- **Respect others' opinions/interests**

