

SDG&E SALT CREEK SUBSTATION PROJECT

CPUC MONITORING SUMMARY REPORT

April 2017

PURPOSE

This report provides a summary of construction and environmental compliance activities that were documented during the month of April 2017, for the San Diego Gas and Electric (SDG&E) Salt Creek Substation Project, as described in the Final Environmental Impact Report (FEIR) and Mitigation Monitoring Compliance and Reporting Program (MMCRP) developed for the project.

SUMMARY OF CONSTRUCTION ACTIVITIES

Construction activities during this reporting period included:

- **Developing site surfaces.** Installing corridor road Arizona crossing and spillway; repairing asphalt on the sewer road; maintaining BMPs; scraping pavement and repaving Hunte Parkway; installing manhole ladder-rungs; repairing Chula Vista irrigation lines at Hunte Parkway; cleaning up and demobilizing from the site; and weed clearing around the construction trailer.
- **Wall and fencing construction.** Removing construction fencing around lattice-tower parking area; and repairing perimeter fence.
- **Electrical work.** Wiring and relay testing in the control shelter; and installing control shelter cable-trough grating.
- **Substation work.** Importing and installing Class II base; final grading of the substation pad; prepping for transformer delivery; delivering and installing substation structural steel; delivering and installing transformer containment-basin grates; and installing transformer firewall.

SUMMARY OF COMPLIANCE ACTIVITIES

Panorama staff conducted a site visit on April 3, 2017. The Daily Inspection Report for the site visit is available in Attachment A. SDG&E summarized their environmental compliance activities in their Weekly Compliance Reports, which are provided in Attachment B. Due to limited construction activity occurring on site, the Lead Environmental Inspector was present at the site on Mondays, Wednesdays and Fridays beginning on April 17th. No incidents were

CPUC MONITORING SUMMARY REPORT

reported by SDG&E. The total record of incidents for the reporting period is provided in Table 1 below.

Table 1: Record of Incidents

Incident Level	CPUC Period Total	CPUC Project Total	SDG&E Period Total	SDG&E Project Total
Level 1: Occurrence	0	8	0 ¹	30 ¹
Level 2: Minor Problem	0	3	0	8
Level 3: Compliance Issue	0	1	0	1
Level 4: Noncompliance	0	0	0	0
Total	0	12	0	39 ¹
Safety Incidents				
Personnel and Contractors	0	0	0	1
Public Complaints				
Received by	0	0	0	0

¹SDG&E reports minor fluid leaks as Level 1 Occurrences

Air Quality

A water truck and water buffalo were used to control dust during construction activities. No winds occurred that were higher than 20 mph and no visible dust was recorded. All pavement was kept clean during this monitoring period. Vehicle and equipment logs were maintained.

Biological Resources

Construction occurred within the project limits of disturbance. No special-status species were observed during the monitoring period. Starlings were observed onsite carrying food items offsite to the northeast. Paired starlings, American crows, mourning doves, house finches, California Towhees, killdeer, and lesser goldfinches were also observed in the general area. On Friday, April 28th, an American crow pair was observed building a stick nest 80-feet up in the east corner of the transmission tower located adjacent to the east corner of the Project. The LEI (and Qualified Biologist) established a nest buffer at 150 feet, reaching just inside the back fence of the Project.

Cultural and Paleontological Resources

Cultural and Native American monitors were not on site, but were on call during the reporting period, because excavations were limited to fill material and native material previously graded to at least 10 feet below the surface, where the potential for cultural or archeological resources was extremely low. The Paleontological monitor was on call during this reporting period, as all ground-disturbing activities were limited to previously disturbed fill material, where the potential for impacts on paleontological resources was extremely low.

CPUC MONITORING SUMMARY REPORT

Hazardous Materials and Waste

Fueling was conducted in appropriate areas, and equipment and vehicles were checked for leaks. No leaks occurred during this reporting period.

Noise

With prior approval from the City of Chula Vista, SDG&E began work in the substation control shelter at 6:30 a.m. on Saturday April 8th, 15th and 22nd. All other construction activities during this reporting period were confined to Monday through Friday between 7:00 a.m. and 7:00 p.m.

Traffic and Transportation

The traffic control plan approved by the City of Chula Vista was implemented and general traffic measures were adhered to. Project personnel parked personal vehicles within designated personal vehicle parking areas within the project limits.

Storm Water Compliance

During this reporting period, soil and erosion control best management practices (BMPs) were maintained in accordance with the Stormwater Pollution Prevention Plan (SWPPP), and SDG&E Water Quality Construction BMP Manual.

The Qualified SWPPP Practitioner conducted a pre-rain and weekly inspection on April 7th, and weekly inspections on April 13th, 19th, and 26th. There were no SWPPP deficiencies observed during this reporting period.

Safety

There were no safety incidents during this reporting period.

Worker Environmental Awareness Program

Approximately 50 personnel attended the supervisor-level WEAP/SWPPP/FIRE Training on June 24th, and approximately 571 project personnel have received the training on site. All attendees received a hard-hat sticker proving completion of the training, which is being worn at all times while on site.

RECORD OF MMCRP REQUESTS AND AUTHORIZATIONS

Notice to Proceed (NTP)

NTP Number	Date Requested	Date Authorized	Description
1	06/10/2016	06/21/2016	The NTP was issued with the conditions that SDG&E shall submit and address CPUC comments on the Landscape and Irrigation Plan and Temporary Impact Restoration Plan no less than 120 days prior to acquisition of landscape materials, and the Spill Prevention, Control, and Countermeasure Plan be complete at least 30 days prior to transformer installation. The Special-Status Plant Mitigation will be revised and implemented to the satisfaction of the CPUC.

Minor Project Refinements (MPRs)

MPR Number	Date Requested	Date Authorized	Description
1	7/12/2016	7/15/2016	MPR#1 modified the approved project by increasing the limits of disturbance by 0.55 acres in the northwest corner of SDG&E's property, adjacent to Hunte Parkway. SDG&E proposed MPR #1 to allow for easier mobility within the northwest corner for installation of the temporary construction fence, as well as allow for the permanent underground connection of the recycled water service lateral and the fire water service lateral. The change in LOD also allowed for the temporary recycled water high line for construction.
2	8/19/2016 Revised 9/02/2016	9/06/2016	MPR #2 modified the project by increasing the limits of disturbance by 0.16 acres in the east portion of SDG&E's property within SDG&E's transmission corridor. SDG&E proposed MPR #2 to allow for additional parking closer to the substation perimeter gate, once the Hunte Parkway parking is inaccessible during the construction of the access road to Hunte Parkway.
3	8/23/2016	8/25/2016	MRP #3 modified the approved project by increasing the limits of disturbance by 0.01 acre in the east portion of SDG&E's property and within the SDG&E transmission corridor. SDG&E proposed MPR #3 to allow trucks that are dropping off imported soil to turn from the SDG&E's existing access road within the transmission corridor onto the SDCWA access road within the substation property. Due to the high frequency of trucks arriving from the SDG&E access road (twelve trucks per hour), it was necessary that there was a safe location for the trucks to turn onto the SDCWA access road.
4	10/21/2016	N/A	It was determined MPR #4 was not required.

CPUC MONITORING SUMMARY REPORT

MPR Number	Date Requested	Date Authorized	Description
5	10/20/2016	10/21/2016	MRP #5 modified approved MPR #1 by changing the fire service lateral line location to improve the structural stability of the line. The new location of the fire service lateral line is approximately 100 feet northeast of the original location that was approved through MPR #1. The new location crosses the property boundary closer to the transmission corridor within the installed temporary construction fence.
6	12/15/2016	12/15/2016	MPR#6 authorized placement of 5 tons of 6-inch rock in a large rill that had formed above the catch basin at SD-Line-A1. MPR #6 was implemented as an emergency erosion control best management practice (BMP). The rock was placed between the project limit fence and the access road. The rock was needed to reduce the storm water velocity in the rill, and minimize soil erosion.
7	01/13/17	01/17/17	MPR #7 authorized the creation of a concrete spillway above the SD-Line-A1 catch basin, a 50-foot-long by 10-foot-wide concrete road with an attached brow ditch, and placement of 5 tons of 6-inch rock in the large rill between the upper and lower transmission corridor roads. The spillway, road, brow ditch, and rock will be used to reduce the stormwater velocity in the rill, and minimize the amount of soil erosion.

CPUC MONITORING SUMMARY REPORT

ATTACHMENT A

CPUC DAILY INSPECTION REPORT

2017-04-03 Inspection Report

SDG&E Salt Creek Substation Project: Daily Inspection Report

Inspection Date	2017-04-03
Start Time	11:15:00
End Time	13:30:00
Monitor Name	Sheila Hoyer
Organization	Panorama Environmental, Inc. (Panorama)
Summary of Construction Activities	MPR#7 is complete. Access Road A is complete. Hunte Parkway trench work is complete. Spoil piles have been removed. Primarily below grade work remains.
Summary of Compliance Activities	LEI removed red diamondback rattlesnake from project. LEI monitoring for nests. No construction activity so no monitors present.
Were any issues encountered?	No

Photo Log

Photo



Caption Site overview.

Photo Attributes Capture Date/Time: Mon Apr 03 2017 12:41:45 GMT-0700 (PDT)
Coordinates: 32.619052, -116.951032
View Direction: Southeast

Photo



Caption Vegetation on east slopes.

Photo Attributes Capture Date/Time: Mon Apr 03 2017 12:38:18 GMT-0700 (PDT)
Coordinates: 32.619177, -116.948327
View Direction: North

Photo



Caption Vegetation on south slopes.

Photo Attributes Capture Date/Time: Mon Apr 03 2017 12:36:52 GMT-0700 (PDT)
Coordinates: 32.618562, -116.948599
View Direction: Northeast

Photo



Caption Vegetation on west slopes.

Photo Attributes Capture Date/Time: Mon Apr 03 2017 12:35:36 GMT-0700 (PDT)
Coordinates: 32.618471, -116.948893
View Direction: Northwest

Photo



Caption Battery storage yard.

Photo Attributes Capture Date/Time: Mon Apr 03 2017 12:19:49 GMT-0700 (PDT)
Coordinates: 32.619170, -116.948628
View Direction: Northwest

Photo



Caption Substation interior.

Photo Attributes Capture Date/Time: Mon Apr 03 2017 11:54:25 GMT-0700 (PDT)
Coordinates: 32.619372, -116.949048
View Direction: Northwest

Photo



Caption Site overview from east side.

Photo Attributes Capture Date/Time: Mon Apr 03 2017 11:41:06 GMT-0700 (PDT)
Coordinates: 32.620359, -116.948731
View Direction: Southwest

Photo



Caption MPR#7 completed March 29, 2017

Photo Attributes Capture Date/Time: Mon Apr 03 2017 11:39:43 GMT-0700 (PDT)
Coordinates: 32.620465, -116.948854
View Direction: South

Photo



Caption MPR #7Spillway to catch basin

Photo Attributes Capture Date/Time: Mon Apr 03 2017 11:37:08 GMT-0700 (PDT)
Coordinates: 32.620558, -116.948975
View Direction: West

Photo



Caption Rattlesnake removal process.

Photo Attributes Capture Date/Time: Mon Apr 03 2017 11:25:36 GMT-0700 (PDT)
 Coordinates: 32.618726, -116.951640
 View Direction: Southwest

Photo



Caption Red diamondback rattlesnake on site.

Photo Attributes Capture Date/Time: Mon Apr 03 2017 11:21:36 GMT-0700 (PDT)
 Coordinates: 32.618771, -116.951580
 View Direction: South

Daily Checklist

Q1 – General Avoidance and Minimization: (a) Were the limits of work areas and access roads defined adequately? (b) Were construction activities limited to CPUC-approved work areas? Met Requirements

Q2 – Air Quality/GHG: (a) Were dust avoidance and minimization requirements implemented and monitored adequately? (b) Was dust generation below required thresholds? (c) Were equipment and vehicles maintained and operated in a manner to limit emissions? (d) Was organic waste collected and separated from non-organic waste for appropriate Corrections Required

composting or recycling as required?	
Q2 Notes	Area where spoil pile removed remains to be stabilized.
Q3 – Special-Status Plants: Were impact avoidance and minimization requirements for special-status plants implemented adequately (e.g., avoiding sensitive areas and restricting application of herbicides)?	Met Requirements
Q4 – Wildlife (Non-Avian): Were impact avoidance and minimization requirements for wildlife implemented adequately (e.g., avoiding sensitive areas, covering excavations, and inspecting equipment/trenches)?	Met Requirements
Q4 Notes	Red diamondback rattlesnake relocated off the project.
Q5 – Nesting and Burrowing Birds: (a) Were active nests and occupied burrows identified and monitored during applicable seasons as required? (b) Were impact avoidance and minimization requirements for any active nests or occupied burrows implemented adequately?	Met Requirements
Q5 Notes	LEI monitoring for nesting birds
Q6 – Water Features and Aquatic Habitat: Were impact avoidance and minimization requirements for hydrology and aquatic habitat implemented adequately (e.g., avoiding water features or work during the wet season)?	N/A
Q7 – Stormwater, Erosion, and Sediment Control: (a) Were erosion and sediment adequately managed? (b) Were erosion and sediment control BMPs installed and functioning properly? (c) Were inactive or completed work areas stabilized and/or restored adequately?	Met Requirements
Q7 Notes	Weeds helping to stabilize slopes
Q8 – Invasive Weed Control: Were procedures to prevent the spread of invasive weeds implemented adequately?	Met Requirements
Q9 – Hazardous Materials and Waste Management: (b) Were hazardous material waste disposed of appropriately? (c) Were any spills or leaks addressed adequately? (d) Was solid waste collected and disposed of adequately?	Met Requirements
Q9 Notes	Spill kit barrels relocated to permanent location in corner of substation yard.
Q10 – Fire Management: (a) Were fire prevention procedures implemented as required? (b) Was firefighting equipment available on site?	Met Requirements
Q10 Notes	Fire box located outside of control shelter.
Q11 – Cultural, Paleontological, and Tribal Resources: (a) Were impact avoidance and minimization requirements for cultural, paleontological, and tribal resources implemented adequately? (b) If potential resources or human remains were inadvertently discovered, were response procedures and protocols implemented as required?	N/A
Q12 – Construction Noise: (a) Were impact avoidance and minimization requirements for noise implemented adequately? (b) If noise complaints were received, were they documented and addressed as required?	Met Requirements
Q13 – Maintain Access: (a) Were traffic controls implemented as required by applicable transportation plans and permits? (b) Was access to existing utility roads maintained adequately? (c) Was access to trails maintained adequately and were signs directing trail users installed?	N/A
Q13 Notes	Traffic controls no longer required.
Q14 – Worker Training and Communication: Have all workers on site received the required environmental trainings for the project?	Met Requirements
Q15 – MMCRP Implementation: (a) Were project activities conducted in a manner that was consistent with the approved project as defined in the EIR and subsequent CPUC authorizations? (b) Were MMCRP procedures implemented adequately?	Met Requirements

ATTACHMENT B

SDG&E ENVIRONMENTAL COMPLIANCE REPORTS



Salt Creek Substation Project
WEEKLY ENVIRONMENTAL COMPLIANCE REPORT
April 3 – April 08, 2017

INTRODUCTION

This report provides an overview of construction progress and applicant-proposed measure (APM) and mitigation measure (MM) implementation during construction of the San Diego Gas & Electric Company (SDG&E) Salt Creek Substation Project (Project) during the week ending on April 8, 2017. Work on the Project was conducted by SDG&E, Geo Pacific Services, Inc. (GeoPac), Suffolk, and their construction subcontractors.

CONSTRUCTION OVERVIEW

On June 21, 2016, the California Public Utilities Commission (CPUC) issued a Notice to Proceed for construction of the Project. Construction of the Salt Creek Substation kicked off on July 18, 2016. During this reporting period, construction activities occurred April 3 – April 8, and are listed in the following section by Project component. A Lead Environmental Inspector (LEI) was on-site April 3 – April 8.

CONSTRUCTION ACTIVITIES

Salt Creek Substation

Construction activities during this reporting period included: landscaping sprinkler replacement at Hunte Parkway, corridor road Arizona crossing and spillway installation, wiring and relay testing in the control shelter, installation of control shelter cable-trough grating, export of excess base from the substation, general site clean-up and BMP maintenance, and Geo Pacific was demobilizing materials and equipment from site. Additional construction activities included repair of the Chula Vista irrigation lines at Hunte Parkway, and pavement scraping and repaving on Hunte Parkway.

WORKER ENVIRONMENTAL AWARENESS PROGRAM

No new project personnel were onsite during this reporting period, so no new workers attended the required environmental training as part of the Project Worker Environmental Awareness Program (WEAP). To date, approximately 558 Project personnel have received the required environmental awareness education.

ENVIRONMENTAL COMPLIANCE SUMMARY

The following subsections provide an assessment of environmental resources and a summary of the APMs, MMs, and permit conditions that were implemented during the week ending on April 8, 2017.

Air Quality

During earth moving activities a water truck was used to control dust. During this reporting period, all pavement was kept clean. No winds exceeding 20-mph occurred during work hours.

Biological Resources

During this monitoring period, construction occurred within the project limits of disturbance, adjacent to, but not within, the special-status plant locations. No special-status species were observed during the monitoring period. Starlings were observed onsite carrying food items offsite to the northeast. Paired starlings, American crows, mourning doves, house finches, California Towhees, and lesser goldfinches were also observed in the general area, but no other nesting behavior was observed.

Cultural and Paleontological Resources

Cultural, Native American, and Paleontological monitors were on-call April 3 – April 8, but were not called to the site during construction activities, as all ground disturbance was limited to previously disturbed fill material, where the potential for impacts to cultural, archaeological, and paleontological resources was extremely low.

Hazardous Materials and Waste

All fueling was conducted in appropriate areas and all vehicles and equipment were checked for leaks. No leaks occurred during this reporting period.

Noise

With prior approval from the City of Chula Vista, SDG&E crews began work in the control shelter at 6:30 a.m. on Saturday, April 8, 2017. All other construction activities during this reporting period were confined to Monday through Friday between 7:00 a.m. and 7:00 p.m.

Traffic and Transportation

The traffic control plan approved by the City of Chula Vista was implemented and general traffic measures were adhered to. The majority of project personnel are parking their personal vehicles within a designated personal vehicle parking area within the project limits and established parking area adjacent to the southeast corner of the project limits.

Storm Water Compliance

During this reporting period, the project SWPPP and BMPs were implemented in accordance with the SDG&E Water Quality Construction BMP Manual.

The Qualified SWPPP Practitioner performed a pre-rain event inspection and a weekly site inspection on April 7. There were no SWPPP deficiencies observed during this reporting period.

Non-Compliances

No non-compliances occurred during this reporting period.

ATTACHMENT A: PHOTOGRAPHS



**Salt Creek Substation Project
ENVIRONMENTAL COMPLIANCE STATUS REPORT
Attachment A: Photographs**



Photograph 1:
Landscaping irrigation repairs at the Exploration Falls Dr. driveway occurred the week of April 8, 2017.



Photograph 2:
Arizona crossing and spillway installation on the corridor road occurred during the week of April 8, 2017, 2017.



Photograph 3:

Export of excess Class II base from the substation occurred during the week of April 8, 2017.

ATTACHMENT B: DAILY LOGS

Salt Creek Daily Inspection

Monitor Date: 4/3/2017

Weather Observations

Start Temperature: 53°F Midday Temperature: 61°F End Temperature: 61°F
Weather Conditions: Sunny
Precipitation: None
Cloud Cover: 10

Construction Details

Construction Start Time: 7:00 AM Construction End Time: 3:00 PM

Construction Activities

- | | |
|---|--|
| <input checked="" type="checkbox"/> Mobilize materials equipment or prepared work areas | <input checked="" type="checkbox"/> Installed aboveground facilities |
| <input type="checkbox"/> Cleared or trimmed vegetation | <input type="checkbox"/> Installed landscaping |
| <input checked="" type="checkbox"/> Conduct earthwork | <input checked="" type="checkbox"/> Demobilized materials equipment or cleaned up work areas |
| <input type="checkbox"/> Developed site drainage facilities | |
| <input type="checkbox"/> Developed site surfaces | |
| <input checked="" type="checkbox"/> Installed underground facilities | |

Was a safety check-in conducted? Y Approximate Number of Construction Personnel On-site: 7

General Notes/Comments Replacing landscaping sprinklers at Hunte Parkway, relay testing in the control shelter, installation of control shelter cable-trough grating, and exporting excess base from the substation.

General Issues

Monitor: Andrew Steyers

- | | |
|--|-----|
| A. Workplace limits verified and properly marked? | Yes |
| B. All activities within approved workspace limits? | Yes |
| C. Only approved access roads utilized for ingress and egress? | Yes |
| D. Access road signs in place? | Yes |
| E. Trash and debris contained and disposed of in proper manner? | Yes |
| F. All crew on site displaying hard-hat decals from WEAP training? | Yes |
| G. Speed limit observed by all project personnel? | Yes |
| H. Was construction noise limited to maximum allowed levels (mufflers being used, construction occurring only within allowed hours, vehicle idling minimized etc.) | Yes |
| I. Was existing vehicle and trail access maintained? | Yes |
| J. Did any health and safety incidents occur? | No |
| K. Were there any public complaints? | No |
| L. Was the project shut down for any reason today? | No |
| M. Were there any other incidents to report? | No |
-

Environmental Resources

Monitor: Andrew Steyers

Compliance Level: In Compliance

- | | |
|---|-----|
| A. Were all active work areas and access roads clearly marked with staking or flagging? | Yes |
| B. Did all vehicles and personnel stay in approved work areas? | Yes |
| C. Was fire suppression equipment within 50 feet of each active work area? | Yes |
| D. Were all construction activities completed between 7:00 a.m. and 7:00 p.m.? | Yes |

Salt Creek Daily Inspection

Monitor Date: 4/3/2017

Biological Resources

Monitor: Andrew Steyers

Compliance Level: In Compliance

- A. Were all work activities conducted outside of any established nesting bird buffer, active nests and/or burrows? **Yes**
- B. Were all equipment/vehicles that arrived on site clean and free of vegetative debris/soil? **Yes**
- C. Were any special-status species observed? **Yes**
A red-diamond rattlesnake (a CDFW Species of Special Concern) was relocated from Project work area and released unharmed.
- D. Did work activities occur in or adjacent to known locations of Special status plants? **Yes**
Special status plants are known to occur in locations adjacent to the Project boundaries. All work performed today occurred within the Project boundaries, outside of known locations of Special status plants.
- E. Did any construction activity occur within an ESA? **No**
- F. Was the work area surveyed for sensitive species immediately prior to ground-disturbing or vegetation removal activities? **Yes**
- G. Are all open excavations/trenches inspected for entrapped wildlife at least twice daily? **Yes**
- H. Are all large/steep excavations/trenches covered and/or fenced nightly? **Yes**
- I. Are excavations covered or equipped with earthen wildlife escape ramps by the end of the day? **Yes**
-

Cultural Resources

No Cultural Data Collected

Paleontological Resources

No Paleontological Data Collected

Dust Control

Monitor: Andrew Steyers

Compliance Level: In Compliance

- A. Are materials carried off site covered or watered prior to leaving site? **Yes**
- B. Are exposed stockpiles of dirt covered or watered to control fugitive dust? **Yes**
- C. Is all soil material tracked onto paved public roads swept daily? **Yes**
- D. Are all work areas and access roads watered daily if there is persistent fugitive dust is visible beyond the work area boundaries? **Yes**
- E. Are all loads covered or have a minimum of two feet of freeboard? **Yes**
- F. If sustained winds of 20 mph or greater are experienced, were soil disturbing activities terminated? **N/A**
- G. Are rock aprons or rattle/shaker plates installed at the intersections of dirt access routes and paved public roadways? **No**

With the opening of the main gate and "Road A" to traffic, the corridor road gate will no longer be used by the Project and the rattle plates there have been removed.

Salt Creek Daily Inspection

Monitor Date: 4/3/2017

Erosion and Sediment

Monitor: Andrew Steyers

Compliance Level: In Compliance

- A. Are there sufficient quantities of erosion control materials stockpiled at the construction site? **Yes**
 - B. Are all locations of temporary stockpiles in approved areas and appropriately protected? **Yes**
 - C. Were any rolled erosion control products used? **Yes**
Straw wattle were used as erosion control.
 - D. Were rolled erosion products comprised of entirely natural fiber biodegradable materials? **Yes**
-

Hazardous Substances

Monitor: Andrew Steyers

Compliance Level: In Compliance

- A. Is fueling conducted in appropriate areas with appropriate containment and spill materials? **Yes**
 - B. Are vehicles and equipment checked for leaks? **Yes**
 - C. Were any leaks observed? **No**
 - D. Are spills cleaned up and disposed of properly? **Yes**
 - E. Are clean-up materials available on site in case of a spill? **Yes**
 - F. Was discolored or odiferous soil or groundwater encountered during excavation activities? **No**
-

Waste

Monitor: Andrew Steyers

Compliance Level: In Compliance

- A. Is project-generated litter removed from the construction site daily? **Yes**
- B. Are waste management receptacle levels appropriately maintained? **Yes**

Salt Creek Daily Inspection

Monitor Date: 4/4/2017

Weather Observations

Start Temperature: 55°F Midday Temperature: 65°F End Temperature: 64°F
Weather Conditions: Sunny
Precipitation: None
Cloud Cover: 0

Construction Details

Construction Start Time: 7:00 AM Construction End Time: 3:15 PM

Construction Activities

- | | |
|---|---|
| <input checked="" type="checkbox"/> Mobilize materials equipment or prepared work areas | <input checked="" type="checkbox"/> Installed aboveground facilities |
| <input type="checkbox"/> Cleared or trimmed vegetation | <input type="checkbox"/> Installed landscaping |
| <input checked="" type="checkbox"/> Conduct earthwork | <input type="checkbox"/> Demobilized materials equipment or cleaned up work areas |
| <input checked="" type="checkbox"/> Developed site drainage facilities | |
| <input type="checkbox"/> Developed site surfaces | |
| <input type="checkbox"/> Installed underground facilities | |

Was a safety check-in conducted? Y Approximate Number of Construction Personnel On-site: 7

General Notes/Comments Installed 6" rock and compacted slope at corridor road Arizona crossing and spillway, wiring in the control shelter, and repair of landscaping irrigation lines at Hunte Parkway.

General Issues

Monitor: Andrew Steyers

- | | |
|--|-----|
| A. Workplace limits verified and properly marked? | Yes |
| B. All activities within approved workspace limits? | Yes |
| C. Only approved access roads utilized for ingress and egress? | Yes |
| D. Access road signs in place? | Yes |
| E. Trash and debris contained and disposed of in proper manner? | Yes |
| F. All crew on site displaying hard-hat decals from WEAP training? | Yes |
| G. Speed limit observed by all project personnel? | Yes |
| H. Was construction noise limited to maximum allowed levels (mufflers being used, construction occurring only within allowed hours, vehicle idling minimized etc.) | Yes |
| I. Was existing vehicle and trail access maintained? | Yes |
| J. Did any health and safety incidents occur? | No |
| K. Were there any public complaints? | No |
| L. Was the project shut down for any reason today? | No |
| M. Were there any other incidents to report? | No |
-

Environmental Resources

Monitor: Andrew Steyers

Compliance Level: In Compliance

- | | |
|---|-----|
| A. Were all active work areas and access roads clearly marked with staking or flagging? | Yes |
| B. Did all vehicles and personnel stay in approved work areas? | Yes |
| C. Was fire suppression equipment within 50 feet of each active work area? | Yes |
| D. Were all construction activities completed between 7:00 a.m. and 7:00 p.m.? | Yes |

Salt Creek Daily Inspection

Monitor Date: 4/4/2017

Biological Resources

Monitor: Andrew Steyers

Compliance Level: In Compliance

- A. Were all work activities conducted outside of any established nesting bird buffer, active nests and/or burrows? **Yes**
- B. Were all equipment/vehicles that arrived on site clean and free of vegetative debris/soil? **Yes**
- C. Were any special-status species observed? **No**
- D. Did work activities occur in or adjacent to known locations of Special status plants? **Yes**
Special status plants are known to occur in locations adjacent to the Project boundaries. All work performed today occurred within the Project boundaries, outside of known locations of Special status plants.
- E. Did any construction activity occur within an ESA? **No**
- F. Was the work area surveyed for sensitive species immediately prior to ground-disturbing or vegetation removal activities? **Yes**
- G. Are all open excavations/trenches inspected for entrapped wildlife at least twice daily? **Yes**
- H. Are all large/steep excavations/trenches covered and/or fenced nightly? **Yes**
- I. Are excavations covered or equipped with earthen wildlife escape ramps by the end of the day? **Yes**
-

Cultural Resources

No Cultural Data Collected

Paleontological Resources

No Paleontological Data Collected

Dust Control

Monitor: Andrew Steyers

Compliance Level: In Compliance

- A. Are materials carried off site covered or watered prior to leaving site? **Yes**
- B. Are exposed stockpiles of dirt covered or watered to control fugitive dust? **Yes**
- C. Is all soil material tracked onto paved public roads swept daily? **Yes**
- D. Are all work areas and access roads watered daily if there is persistent fugitive dust is visible beyond the work area boundaries? **Yes**
- E. Are all loads covered or have a minimum of two feet of freeboard? **Yes**
- F. If sustained winds of 20 mph or greater are experienced, were soil disturbing activities terminated? **N/A**
- G. Are rock aprons or rattle/shaker plates installed at the intersections of dirt access routes and paved public roadways? **No**

With the opening of the main gate and "Road A" to traffic, the corridor road gate will no longer be used by the Project and the rattle plates there have been removed.

Salt Creek Daily Inspection

Monitor Date: 4/4/2017

Erosion and Sediment

Monitor: Andrew Steyers

Compliance Level: In Compliance

- | | |
|--|-----|
| A. Are there sufficient quantities of erosion control materials stockpiled at the construction site? | Yes |
| B. Are all locations of temporary stockpiles in approved areas and appropriately protected? | Yes |
| C. Were any rolled erosion control products used?
Straw wattle were used as erosion control. | Yes |
| D. Were rolled erosion products comprised of entirely natural fiber biodegradable materials? | Yes |
-

Hazardous Substances

Monitor: Andrew Steyers

Compliance Level: In Compliance

- | | |
|--|-----|
| A. Is fueling conducted in appropriate areas with appropriate containment and spill materials? | Yes |
| B. Are vehicles and equipment checked for leaks? | Yes |
| C. Were any leaks observed? | No |
| D. Are spills cleaned up and disposed of properly? | Yes |
| E. Are clean-up materials available on site in case of a spill? | Yes |
| F. Was discolored or odiferous soil or groundwater encountered during excavation activities? | No |
-

Waste

Monitor: Andrew Steyers

Compliance Level: In Compliance

- | | |
|--|-----|
| A. Is project-generated litter removed from the construction site daily? | Yes |
| B. Are waste management receptacle levels appropriately maintained? | Yes |

Salt Creek Daily Inspection

Monitor Date: 4/5/2017

Weather Observations

Start Temperature: 57°F Midday Temperature: 67°F End Temperature: 67°F
Weather Conditions: Sunny
Precipitation: None
Cloud Cover: 0

Construction Details

Construction Start Time: 7:00 AM Construction End Time: 3:00 PM

Construction Activities

- | | |
|---|--|
| <input checked="" type="checkbox"/> Mobilize materials equipment or prepared work areas | <input checked="" type="checkbox"/> Installed aboveground facilities |
| <input type="checkbox"/> Cleared or trimmed vegetation | <input type="checkbox"/> Installed landscaping |
| <input type="checkbox"/> Conduct earthwork | <input checked="" type="checkbox"/> Demobilized materials equipment or cleaned up work areas |
| <input type="checkbox"/> Developed site drainage facilities | |
| <input type="checkbox"/> Developed site surfaces | |
| <input checked="" type="checkbox"/> Installed underground facilities | |

Was a safety check-in conducted? Y Approximate Number of Construction Personnel On-site: 7

General Notes/Comments Repair of City of Chula Vista irrigation lines on Hunte Parkway, wiring of the Control Shelter, site clean-up, and BMP repairs. Also, Geo Pacific was demobilizing materials and equipment from the site.

General Issues

Monitor: Andrew Steyers

- | | |
|--|-----|
| A. Workplace limits verified and properly marked? | Yes |
| B. All activities within approved workspace limits? | Yes |
| C. Only approved access roads utilized for ingress and egress? | Yes |
| D. Access road signs in place? | Yes |
| E. Trash and debris contained and disposed of in proper manner? | Yes |
| F. All crew on site displaying hard-hat decals from WEAP training? | Yes |
| G. Speed limit observed by all project personnel? | Yes |
| H. Was construction noise limited to maximum allowed levels (mufflers being used, construction occurring only within allowed hours, vehicle idling minimized etc.) | Yes |
| I. Was existing vehicle and trail access maintained? | Yes |
| J. Did any health and safety incidents occur? | No |
| K. Were there any public complaints? | No |
| L. Was the project shut down for any reason today? | No |
| M. Were there any other incidents to report? | No |
-

Environmental Resources

Monitor: Andrew Steyers

Compliance Level: In Compliance

- | | |
|---|-----|
| A. Were all active work areas and access roads clearly marked with staking or flagging? | Yes |
| B. Did all vehicles and personnel stay in approved work areas? | Yes |
| C. Was fire suppression equipment within 50 feet of each active work area? | Yes |
| D. Were all construction activities completed between 7:00 a.m. and 7:00 p.m.? | Yes |

Salt Creek Daily Inspection

Monitor Date: 4/5/2017

Biological Resources

Monitor: Andrew Steyers

Compliance Level: In Compliance

- A. Were all work activities conducted outside of any established nesting bird buffer, active nests and/or burrows? **Yes**
- B. Were all equipment/vehicles that arrived on site clean and free of vegetative debris/soil? **Yes**
- C. Were any special-status species observed? **No**
- D. Did work activities occur in or adjacent to known locations of Special status plants? **Yes**
Special status plants are known to occur in locations adjacent to the Project boundaries. All work performed today occurred within the Project boundaries, outside of known locations of Special status plants.
- E. Did any construction activity occur within an ESA? **No**
- F. Was the work area surveyed for sensitive species immediately prior to ground-disturbing or vegetation removal activities? **Yes**
- G. Are all open excavations/trenches inspected for entrapped wildlife at least twice daily? **Yes**
- H. Are all large/steep excavations/trenches covered and/or fenced nightly? **Yes**
- I. Are excavations covered or equipped with earthen wildlife escape ramps by the end of the day? **Yes**

J. General Notes/Comments

A southern-pacific rattlesnake was relocated from the Project work area and released unharmed.

Cultural Resources

No Cultural Data Collected

Paleontological Resources

No Paleontological Data Collected

Dust Control

Monitor: Andrew Steyers

Compliance Level: In Compliance

- A. Are materials carried off site covered or watered prior to leaving site? **Yes**
- B. Are exposed stockpiles of dirt covered or watered to control fugitive dust? **Yes**
- C. Is all soil material tracked onto paved public roads swept daily? **Yes**
- D. Are all work areas and access roads watered daily if there is persistent fugitive dust is visible beyond the work area boundaries? **Yes**
- E. Are all loads covered or have a minimum of two feet of freeboard? **Yes**
- F. If sustained winds of 20 mph or greater are experienced, were soil disturbing activities terminated? **N/A**
- G. Are rock aprons or rattle/shaker plates installed at the intersections of dirt access routes and paved public roadways? **No**

With the opening of the main gate and "Road A" to traffic, the corridor road gate will no longer be used by the Project and the rattle plates there have been removed.

Salt Creek Daily Inspection

Monitor Date: 4/5/2017

Erosion and Sediment

Monitor: Andrew Steyers

Compliance Level: In Compliance

- | | |
|--|-----|
| A. Are there sufficient quantities of erosion control materials stockpiled at the construction site? | Yes |
| B. Are all locations of temporary stockpiles in approved areas and appropriately protected? | Yes |
| C. Were any rolled erosion control products used?
Straw wattle were used as erosion control. | Yes |
| D. Were rolled erosion products comprised of entirely natural fiber biodegradable materials? | Yes |
-

Hazardous Substances

Monitor: Andrew Steyers

Compliance Level: In Compliance

- | | |
|--|-----|
| A. Is fueling conducted in appropriate areas with appropriate containment and spill materials? | Yes |
| B. Are vehicles and equipment checked for leaks? | Yes |
| C. Were any leaks observed? | No |
| D. Are spills cleaned up and disposed of properly? | Yes |
| E. Are clean-up materials available on site in case of a spill? | Yes |
| F. Was discolored or odiferous soil or groundwater encountered during excavation activities? | No |
-

Waste

Monitor: Andrew Steyers

Compliance Level: In Compliance

- | | |
|--|-----|
| A. Is project-generated litter removed from the construction site daily? | Yes |
| B. Are waste management receptacle levels appropriately maintained? | Yes |

Salt Creek Daily Inspection

Monitor Date: 4/6/2017

Weather Observations

Start Temperature: 55°F Midday Temperature: 68°F End Temperature: 67°F
Weather Conditions: Partially Sunny
Precipitation: None
Cloud Cover: 10

Construction Details

Construction Start Time: 7:00 AM Construction End Time: 3:00 PM

Construction Activities

- | | |
|--|---|
| <input type="checkbox"/> Mobilize materials equipment or prepared work areas | <input type="checkbox"/> Installed aboveground facilities |
| <input type="checkbox"/> Cleared or trimmed vegetation | <input type="checkbox"/> Installed landscaping |
| <input type="checkbox"/> Conduct earthwork | <input type="checkbox"/> Demobilized materials equipment or cleaned up work areas |
| <input type="checkbox"/> Developed site drainage facilities | |
| <input type="checkbox"/> Developed site surfaces | |
| <input checked="" type="checkbox"/> Installed underground facilities | |

Was a safety check-in conducted? Y Approximate Number of Construction Personnel On-site: 5

General Notes/Comments SDGE worked in control room and installed underground cables in substation yard. CWE performed a pre-rain survey. No paleontological monitor was onsite.

General Issues

Monitor: James McMorran

- | | |
|--|-----|
| A. Workplace limits verified and properly marked? | Yes |
| B. All activities within approved workspace limits? | Yes |
| C. Only approved access roads utilized for ingress and egress? | Yes |
| D. Access road signs in place? | Yes |
| E. Trash and debris contained and disposed of in proper manner? | Yes |
| F. All crew on site displaying hard-hat decals from WEAP training? | Yes |
| G. Speed limit observed by all project personnel? | Yes |
| H. Was construction noise limited to maximum allowed levels (mufflers being used, construction occurring only within allowed hours, vehicle idling minimized etc.) | Yes |
| I. Was existing vehicle and trail access maintained? | Yes |
| J. Did any health and safety incidents occur? | No |
| K. Were there any public complaints? | No |
| L. Was the project shut down for any reason today? | No |
| M. Were there any other incidents to report? | No |
-

Environmental Resources

Monitor: James McMorran

Compliance Level: In Compliance

- | | |
|---|-----|
| A. Were all active work areas and access roads clearly marked with staking or flagging? | Yes |
| B. Did all vehicles and personnel stay in approved work areas? | Yes |
| C. Was fire suppression equipment within 50 feet of each active work area? | Yes |
| D. Were all construction activities completed between 7:00 a.m. and 7:00 p.m.? | Yes |

Salt Creek Daily Inspection

Monitor Date: 4/6/2017

Biological Resources

Monitor: James McMorran

Compliance Level: In Compliance

- | | |
|---|-----|
| A. Were all work activities conducted outside of any established nesting bird buffer, active nests and/or burrows? | Yes |
| B. Were all equipment/vehicles that arrived on site clean and free of vegetative debris/soil? | Yes |
| C. Were any special-status species observed? | No |
| D. Did work activities occur in or adjacent to known locations of Special status plants?
Special status plants are known to occur in locations adjacent to the Project boundaries. All work performed today occurred within the Project boundaries, outside of known locations of Special status plants. | Yes |
| E. Did any construction activity occur within an ESA? | No |
| F. Was the work area surveyed for sensitive species immediately prior to ground-disturbing or vegetation removal activities? | Yes |
| G. Are all open excavations/trenches inspected for entrapped wildlife at least twice daily? | Yes |
| H. Are all large/steep excavations/trenches covered and/or fenced nightly? | Yes |
| I. Are excavations covered or equipped with earthen wildlife escape ramps by the end of the day? | Yes |
-

Cultural Resources

No Cultural Data Collected

Paleontological Resources

No Paleontological Data Collected

Dust Control

Monitor: James McMorran

Compliance Level: In Compliance

- | | |
|---|-----|
| A. Are materials carried off site covered or watered prior to leaving site? | N/A |
| B. Are exposed stockpiles of dirt covered or watered to control fugitive dust? | N/A |
| C. Is all soil material tracked onto paved public roads swept daily? | Yes |
| D. Are all work areas and access roads watered daily if there is persistent fugitive dust is visible beyond the work area boundaries? | N/A |
| E. Are all loads covered or have a minimum of two feet of freeboard? | N/A |
| F. If sustained winds of 20 mph or greater are experienced, were soil disturbing activities terminated? | N/A |
| G. Are rock aprons or rattle/shaker plates installed at the intersections of dirt access routes and paved public roadways? | No |

With the opening of the main gate and "Road A" to traffic, the corridor road gate will no longer be used by the Project and the rattle plates there have been removed.

Salt Creek Daily Inspection

Monitor Date: 4/6/2017

Erosion and Sediment

Monitor: James McMorran

Compliance Level: In Compliance

- | | |
|--|-----|
| A. Are there sufficient quantities of erosion control materials stockpiled at the construction site? | Yes |
| B. Are all locations of temporary stockpiles in approved areas and appropriately protected? | Yes |
| C. Were any rolled erosion control products used?
Straw wattle were used as erosion control. | Yes |
| D. Were rolled erosion products comprised of entirely natural fiber biodegradable materials? | Yes |
-

Hazardous Substances

Monitor: James McMorran

Compliance Level: In Compliance

- | | |
|--|-----|
| A. Is fueling conducted in appropriate areas with appropriate containment and spill materials? | N/A |
| B. Are vehicles and equipment checked for leaks? | Yes |
| C. Were any leaks observed? | No |
| D. Are spills cleaned up and disposed of properly? | Yes |
| E. Are clean-up materials available on site in case of a spill? | Yes |
| F. Was discolored or odiferous soil or groundwater encountered during excavation activities? | No |
-

Waste

Monitor: James McMorran

Compliance Level: In Compliance

- | | |
|--|-----|
| A. Is project-generated litter removed from the construction site daily? | Yes |
| B. Are waste management receptacle levels appropriately maintained? | Yes |

Salt Creek Daily Inspection

Monitor Date: 4/7/2017

Weather Observations

Start Temperature: 57°F Midday Temperature: 71°F End Temperature: 69°F
Weather Conditions: Partially Sunny
Precipitation: None
Cloud Cover: 30

Construction Details

Construction Start Time: 7:00 AM Construction End Time: 4:15 PM

Construction Activities

- | | |
|---|--|
| <input checked="" type="checkbox"/> Mobilize materials equipment or prepared work areas | <input type="checkbox"/> Installed aboveground facilities |
| <input type="checkbox"/> Cleared or trimmed vegetation | <input type="checkbox"/> Installed landscaping |
| <input type="checkbox"/> Conduct earthwork | <input checked="" type="checkbox"/> Demobilized materials equipment or cleaned up work areas |
| <input type="checkbox"/> Developed site drainage facilities | |
| <input checked="" type="checkbox"/> Developed site surfaces | |
| <input type="checkbox"/> Installed underground facilities | |

Was a safety check-in conducted? Y Approximate Number of Construction Personnel On-site: 20

General Notes/Comments Pavement scraping and repaving on Hunte Parkway and SDGE worked in control room in substation.
No paleontological monitor was onsite.

General Issues

Monitor: James McMorran

- | | |
|--|-----|
| A. Workplace limits verified and properly marked? | Yes |
| B. All activities within approved workspace limits? | Yes |
| C. Only approved access roads utilized for ingress and egress? | Yes |
| D. Access road signs in place? | Yes |
| E. Trash and debris contained and disposed of in proper manner? | Yes |
| F. All crew on site displaying hard-hat decals from WEAP training? | Yes |
| G. Speed limit observed by all project personnel? | Yes |
| H. Was construction noise limited to maximum allowed levels (mufflers being used, construction occurring only within allowed hours, vehicle idling minimized etc.) | Yes |
| I. Was existing vehicle and trail access maintained? | Yes |
| J. Did any health and safety incidents occur? | No |
| K. Were there any public complaints? | No |
| L. Was the project shut down for any reason today? | No |
| M. Were there any other incidents to report? | No |
-

Environmental Resources

Monitor: James McMorran

Compliance Level: In Compliance

- | | |
|---|-----|
| A. Were all active work areas and access roads clearly marked with staking or flagging? | Yes |
| B. Did all vehicles and personnel stay in approved work areas? | Yes |
| C. Was fire suppression equipment within 50 feet of each active work area? | Yes |
| D. Were all construction activities completed between 7:00 a.m. and 7:00 p.m.? | Yes |

Salt Creek Daily Inspection

Monitor Date: 4/7/2017

Biological Resources

Monitor: James McMorran

Compliance Level: In Compliance

- | | |
|---|-----|
| A. Were all work activities conducted outside of any established nesting bird buffer, active nests and/or burrows? | Yes |
| B. Were all equipment/vehicles that arrived on site clean and free of vegetative debris/soil? | Yes |
| C. Were any special-status species observed? | No |
| D. Did work activities occur in or adjacent to known locations of Special status plants?
Special status plants are known to occur in locations adjacent to the Project boundaries. All work performed today occurred within the Project boundaries, outside of known locations of Special status plants. | Yes |
| E. Did any construction activity occur within an ESA? | No |
| F. Was the work area surveyed for sensitive species immediately prior to ground-disturbing or vegetation removal activities? | Yes |
| G. Are all open excavations/trenches inspected for entrapped wildlife at least twice daily? | Yes |
| H. Are all large/steep excavations/trenches covered and/or fenced nightly? | Yes |
| I. Are excavations covered or equipped with earthen wildlife escape ramps by the end of the day? | Yes |
-

Cultural Resources

No Cultural Data Collected

Paleontological Resources

No Paleontological Data Collected

Dust Control

Monitor: James McMorran

Compliance Level: In Compliance

- | | |
|---|-----|
| A. Are materials carried off site covered or watered prior to leaving site? | Yes |
| B. Are exposed stockpiles of dirt covered or watered to control fugitive dust? | Yes |
| C. Is all soil material tracked onto paved public roads swept daily?
Entrance and exit and all roads are paved. | Yes |
| D. Are all work areas and access roads watered daily if there is persistent fugitive dust is visible beyond the work area boundaries? | N/A |
| E. Are all loads covered or have a minimum of two feet of freeboard? | Yes |
| F. If sustained winds of 20 mph or greater are experienced, were soil disturbing activities terminated? | N/A |
| G. Are rock aprons or rattle/shaker plates installed at the intersections of dirt access routes and paved public roadways? | No |

With the opening of the main gate and "Road A" to traffic, the corridor road gate will no longer be used by the Project and the rattle plates there have been removed.

Salt Creek Daily Inspection

Monitor Date: 4/7/2017

Erosion and Sediment

Monitor: James McMorran

Compliance Level: In Compliance

- A. Are there sufficient quantities of erosion control materials stockpiled at the construction site? **Yes**
 - B. Are all locations of temporary stockpiles in approved areas and appropriately protected? **Yes**
 - C. Were any rolled erosion control products used? **Yes**
Straw wattle were used as erosion control.
 - D. Were rolled erosion products comprised of entirely natural fiber biodegradable materials? **Yes**
-

Hazardous Substances

Monitor: James McMorran

Compliance Level: In Compliance

- A. Is fueling conducted in appropriate areas with appropriate containment and spill materials? **Yes**
 - B. Are vehicles and equipment checked for leaks? **Yes**
 - C. Were any leaks observed? **No**
 - D. Are spills cleaned up and disposed of properly? **Yes**
 - E. Are clean-up materials available on site in case of a spill? **Yes**
 - F. Was discolored or odiferous soil or groundwater encountered during excavation activities? **No**
-

Waste

Monitor: James McMorran

Compliance Level: In Compliance

- A. Is project-generated litter removed from the construction site daily? **Yes**
- B. Are waste management receptacle levels appropriately maintained? **Yes**

Salt Creek Daily Inspection

Monitor Date: 4/8/2017

Weather Observations

Start Temperature: 56°F Midday Temperature: 63°F End Temperature: 63°F
Weather Conditions: Cloudy
Precipitation: None
Cloud Cover: 100

Construction Details

Construction Start Time: 6:30 AM Construction End Time: 3:00 PM

Construction Activities

- | | |
|---|---|
| <input checked="" type="checkbox"/> Mobilize materials equipment or prepared work areas | <input checked="" type="checkbox"/> Installed aboveground facilities |
| <input type="checkbox"/> Cleared or trimmed vegetation | <input type="checkbox"/> Installed landscaping |
| <input type="checkbox"/> Conduct earthwork | <input type="checkbox"/> Demobilized materials equipment or cleaned up work areas |
| <input type="checkbox"/> Developed site drainage facilities | |
| <input type="checkbox"/> Developed site surfaces | |
| <input type="checkbox"/> Installed underground facilities | |

Was a safety check-in conducted? Y Approximate Number of Construction Personnel On-site: 5

General Notes/Comments Wiring in the control shelter.

General Issues

Monitor: Andrew Steyers

- | | |
|--|-----|
| A. Workplace limits verified and properly marked? | Yes |
| B. All activities within approved workspace limits? | Yes |
| C. Only approved access roads utilized for ingress and egress? | Yes |
| D. Access road signs in place? | Yes |
| E. Trash and debris contained and disposed of in proper manner? | Yes |
| F. All crew on site displaying hard-hat decals from WEAP training? | Yes |
| G. Speed limit observed by all project personnel? | Yes |
| H. Was construction noise limited to maximum allowed levels (mufflers being used, construction occurring only within allowed hours, vehicle idling minimized etc.) | Yes |
| I. Was existing vehicle and trail access maintained? | Yes |
| J. Did any health and safety incidents occur? | No |
| K. Were there any public complaints? | No |
| L. Was the project shut down for any reason today? | No |
| M. Were there any other incidents to report? | No |
-

Environmental Resources

Monitor: Andrew Steyers

Compliance Level: In Compliance

- | | |
|---|-----|
| A. Were all active work areas and access roads clearly marked with staking or flagging? | Yes |
| B. Did all vehicles and personnel stay in approved work areas? | Yes |
| C. Was fire suppression equipment within 50 feet of each active work area? | Yes |
| D. Were all construction activities completed between 7:00 a.m. and 7:00 p.m.? | No |

With prior approval from the City of Chula Vista, SDG&E crews began work at 6:30 am.

Salt Creek Daily Inspection

Monitor Date: 4/8/2017

Biological Resources

Monitor: Andrew Steyers

Compliance Level: In Compliance

- A. Were all work activities conducted outside of any established nesting bird buffer, active nests and/or burrows? **Yes**
- B. Were all equipment/vehicles that arrived on site clean and free of vegetative debris/soil? **Yes**
- C. Were any special-status species observed? **No**
- D. Did work activities occur in or adjacent to known locations of Special status plants? **Yes**
Special status plants are known to occur in locations adjacent to the Project boundaries. All work performed today occurred within the Project boundaries, outside of known locations of Special status plants.
- E. Did any construction activity occur within an ESA? **No**
- F. Was the work area surveyed for sensitive species immediately prior to ground-disturbing or vegetation removal activities? **Yes**
- G. Are all open excavations/trenches inspected for entrapped wildlife at least twice daily? **Yes**
- H. Are all large/steep excavations/trenches covered and/or fenced nightly? **Yes**
- I. Are excavations covered or equipped with earthen wildlife escape ramps by the end of the day? **Yes**

J. General Notes/Comments

Observed starlings onsite carrying food items offsite to the northeast. Also observed paired starlings, American crows, mourning doves, house finches, California Towhees, and lesser goldfinches in the area, but no other nesting behavior.

Cultural Resources

No Cultural Data Collected

Paleontological Resources

No Paleontological Data Collected

Dust Control

Monitor: Andrew Steyers

Compliance Level: In Compliance

- A. Are materials carried off site covered or watered prior to leaving site? **Yes**
- B. Are exposed stockpiles of dirt covered or watered to control fugitive dust? **Yes**
- C. Is all soil material tracked onto paved public roads swept daily? **Yes**
- D. Are all work areas and access roads watered daily if there is persistent fugitive dust is visible beyond the work area boundaries? **Yes**
- E. Are all loads covered or have a minimum of two feet of freeboard? **Yes**
- F. If sustained winds of 20 mph or greater are experienced, were soil disturbing activities terminated? **N/A**
- G. Are rock aprons or rattle/shaker plates installed at the intersections of dirt access routes and paved public roadways? **No**

With the opening of the main gate and "Road A" to traffic, the corridor road gate will no longer be used by the Project and the rattle plates there have been removed.

Salt Creek Daily Inspection

Monitor Date: 4/8/2017

Erosion and Sediment

Monitor: Andrew Steyers

Compliance Level: In Compliance

- | | |
|--|-----|
| A. Are there sufficient quantities of erosion control materials stockpiled at the construction site? | Yes |
| B. Are all locations of temporary stockpiles in approved areas and appropriately protected? | Yes |
| C. Were any rolled erosion control products used?
Straw wattle were used as erosion control. | Yes |
| D. Were rolled erosion products comprised of entirely natural fiber biodegradable materials? | Yes |
-

Hazardous Substances

Monitor: Andrew Steyers

Compliance Level: In Compliance

- | | |
|--|-----|
| A. Is fueling conducted in appropriate areas with appropriate containment and spill materials? | Yes |
| B. Are vehicles and equipment checked for leaks? | Yes |
| C. Were any leaks observed? | No |
| D. Are spills cleaned up and disposed of properly? | Yes |
| E. Are clean-up materials available on site in case of a spill? | Yes |
| F. Was discolored or odiferous soil or groundwater encountered during excavation activities? | No |
-

Waste

Monitor: Andrew Steyers

Compliance Level: In Compliance

- | | |
|--|-----|
| A. Is project-generated litter removed from the construction site daily? | Yes |
| B. Are waste management receptacle levels appropriately maintained? | Yes |

ATTACHMENT C: MMCRP CHECKLIST

SALT CREEK SUBSTATION PROJECT

Weekly MMCRP Checklist

Completed by:

Organization:

Position:

Day of the Week	Mon	Tue	Wed	Thu	Fri	Sat	Sun
Date (mm/dd/yy)							
A. Daily Work Hours and Workforce							
Start Time (hh:mm am/pm)							
Stop Time							
Construction Personnel Onsite							
Compliance Personnel Onsite							
Total Personnel Onsite							
B. Daily Construction Activities – Check only if applicable							
1. Mobilized materials/equipment or prepared work areas							
2. Cleared or trimmed vegetation							
3. Conducted earthwork (grading, trenching, or other ground disturbance)							
4. Developed site surfaces (substation pad or access roads)							
5. Developed site drainage facilities							
6. Installed underground facilities							
7. Installed aboveground facilities							
8. Installed landscaping							
9. Demobilized materials/equipment or cleaned up work areas							
10. Other							
C. Daily Compliance Activities – Check only if applicable and implemented adequately without incident							
Avoidance and Minimization, and General Monitoring							
1. Limited activities to approved work areas and access roads (APM BIO-2 and MM Biology-1a)							
2. Limited dust generation and emissions to required thresholds (APM AIR-1, APM AIR-2, MM Air-1, MM Biology-1a, and MM GHG-1)							
3. Avoided sensitive plant habitat (APM BIO-2, MM Biology-1a, MM Biology-2, and MM Biology-9)							
4. Avoided sensitive wildlife habitat (APM BIO-3, MM Biology-1a, MM Biology-7, and MM Biology-8)							
5. Avoided active bird nests or burrows (APM BIO-1, APM BIO-2, MM Biology-1a, and MM Biology-6)							
6. Avoided sensitive water features and aquatic habitat (APM HAZ-1, MM Biology-1a, and APM HYDRO-2)							
7. Installed/maintained erosion or sediment controls (APM BIO-2, APM BIO-4, MM Biology-1a, MM Geology-1, APM HYDRO-1, and MM Hydro-2)							
8. Implemented invasive weed measures (MM Biology-3)							

Weekly MMCRP Checklist

Day of the Week	Mon	Tue	Wed	Thu	Fri	Sat	Sun
Dates							
9. Managed hazardous materials and waste (APM BIO-2, MM Biology-1a, APM HAZ-1, and APM HAZ-2)							
10. Implemented fire prevention measures (MM Biology-1a, APM HAZ-3, and MM Hazards-2)							
11. Avoided known cultural, paleontological, and tribal resources (APM CUL-2, APM CUL-7, MM Cultural Resources-1, MM Cultural Resources-2, MM Cultural Resources-3, MM Cultural Resources-4, and MM Cultural Paleontology-1)							
12. Limited construction noise to maximum levels (APM NOISE-1, APM NOISE-3, MM Noise-1, and MM Noise-2)							
13. Maintain existing vehicle and trail access (APM REC-1, MM Recreation-2, APM TRANS-1, and MM Traffic-3)							
14. Provided workers with required environmental trainings (APM BIO-1, APM BIO-2, MM Biology-1a, APM CUL-1, APM GHG-1, APM HAZ-1, APM HAZ-3, and APM HYDRO-1)							
15. Implemented MMCRP procedures							
SDG&E Specialty Monitoring							
16. Special-status wildlife (APM BIO-2, MM Biology-1a, MM Biology-7, and MM Biology-8)							
17. Nesting birds/burrowing owls (APM BIO-1 and MM Biology-6)							
18. Special-status plants (APM BIO-2, MM Biology-1a, MM Biology-3, and MM Biology-1b)							
19. Aquatic/hydrologic resources (APM HYDRO-1 and MM Geology-1)							
20. SWPPP/reclamation (APM HYDRO-1, MM Geology-1, and MM Biology-11)							
21. Cultural resources (APM CUL-2, MM Cultural Resources-1, MM Cultural Resources-2, and MM Cultural Resources-3)							
22. Paleontological resources (APM CUL-5, APM CUL-6, and MM Paleontology 1)							
23. Tribal resources (MM Cultural Resources-4)							
24. Fire management (APM HAZ-3)							
D. SDG&E Record of Weekly Incidents							
Compliance Level 1: Occurrences							
Compliance Level 2: Minor Problems							
Compliance Level 3: Compliance Issues							
Compliance Level 4: Noncompliances							
Total Compliance Level Incidents							
Health and Safety Incidents							
Public Complaints							
Total Incidents							



Salt Creek Substation Project
WEEKLY ENVIRONMENTAL COMPLIANCE REPORT
April 10 – April 15, 2017

INTRODUCTION

This report provides an overview of construction progress and applicant-proposed measure (APM) and mitigation measure (MM) implementation during construction of the San Diego Gas & Electric Company (SDG&E) Salt Creek Substation Project (Project) during the week ending on April 15, 2017. Work on the Project was conducted by SDG&E, Geo Pacific Services, Inc. (GeoPac), and their construction subcontractors.

CONSTRUCTION OVERVIEW

On June 21, 2016, the California Public Utilities Commission (CPUC) issued a Notice to Proceed for construction of the Project. Construction of the Salt Creek Substation kicked off on July 18, 2016. During this reporting period, construction activities occurred April 10 – April 15, and are listed in the following section by Project component. A Lead Environmental Inspector (LEI) was on-site April 10 – April 15.

CONSTRUCTION ACTIVITIES

Salt Creek Substation

Construction activities during this reporting period included: importing and installing Class II base in the substation, asphalt repair on the sewer road and Hunte Parkway, and control room wiring. One new piece of equipment was brought in on a flat-bed truck. The machine, CAT 210K SB4N76, was inspected for leaks, debris, and appropriate tier number before signing in. Three pieces of equipment were demobilized (front loader, skip loader, and roller) for removal from the site.

WORKER ENVIRONMENTAL AWARENESS PROGRAM

Three new project personnel attended the required environmental training as part of the Project Worker Environmental Awareness Program (WEAP). To date, approximately 561 Project personnel have received the required environmental awareness education.

ENVIRONMENTAL COMPLIANCE SUMMARY

The following subsections provide an assessment of environmental resources and a summary of the APMs, MMs, and permit conditions that were implemented during the week ending on April 15, 2017.

Air Quality

A water truck was used to control dust during construction activities. All pavement was kept clean during this reporting period. No winds exceeding 20-mph occurred during work hours.

Biological Resources

During this monitoring period, construction occurred within the project limits of disturbance, adjacent to, but not within, the special-status plant locations. No special-status species were observed during the monitoring period.

Cultural and Paleontological Resources

Cultural, Native American, and Paleontological monitors were on-call April 10 – April 15, but were not called to the site during construction activities as no ground-disturbing activities occurred.

Hazardous Materials and Waste

All fueling was conducted in appropriate areas and all vehicles and equipment were checked for leaks. No leaks occurred during this reporting period.

Noise

With prior approval from the City of Chula Vista, SDG&E crews began work in the control shelter at 6:30 a.m. on Saturday, April 15, 2017. All other construction activities during this reporting period were confined to Monday through Friday between 7:00 a.m. and 7:00 p.m.

Traffic and Transportation

The traffic control plan approved by the City of Chula Vista was implemented and general traffic measures were adhered to. The majority of project personnel are parking their personal vehicles within a designated personal vehicle parking area within the project limits and established parking area adjacent to the southeast corner of the project limits.

Storm Water Compliance

During this reporting period, the project SWPPP and BMPs were implemented in accordance with the SDG&E Water Quality Construction BMP Manual.

The Qualified SWPPP Practitioner performed a weekly site inspection on April 13. There were no SWPPP deficiencies observed during this reporting period.

Non-Compliances

No non-compliances occurred during this reporting period.

ATTACHMENT A: PHOTOGRAPHS



**Salt Creek Substation Project
ENVIRONMENTAL COMPLIANCE STATUS REPORT
Attachment A: Photographs**



Photograph 1:
Import and installation of Class II base in the substation occurred the week of April 15, 2017.



Photograph 2:
Asphalt repair on the sewer road and Hunte Parkway occurred during the week of April 15, 2017.

ATTACHMENT B: DAILY LOGS

Salt Creek Daily Inspection

Monitor Date: 4/10/2017

Weather Observations

Start Temperature: 55°F Midday Temperature: 65°F End Temperature: 65°F
Weather Conditions: Sunny
Precipitation: None
Cloud Cover: 5

Construction Details

Construction Start Time: 7:00 AM Construction End Time: 3:30 PM

Construction Activities

- | | |
|---|---|
| <input checked="" type="checkbox"/> Mobilize materials equipment or prepared work areas | <input checked="" type="checkbox"/> Installed aboveground facilities |
| <input type="checkbox"/> Cleared or trimmed vegetation | <input type="checkbox"/> Installed landscaping |
| <input type="checkbox"/> Conduct earthwork | <input type="checkbox"/> Demobilized materials equipment or cleaned up work areas |
| <input type="checkbox"/> Developed site drainage facilities | |
| <input checked="" type="checkbox"/> Developed site surfaces | |
| <input type="checkbox"/> Installed underground facilities | |

Was a safety check-in conducted? Y Approximate Number of Construction Personnel On-site: 13

General Notes/Comments Repairing asphalt in access road and on Hunte Parkway, wiring in the control room, and importing and spreading Class II base in the substation.

General Issues

Monitor: Andrew Steyers

- | | |
|--|-----|
| A. Workplace limits verified and properly marked? | Yes |
| B. All activities within approved workspace limits? | Yes |
| C. Only approved access roads utilized for ingress and egress? | Yes |
| D. Access road signs in place? | Yes |
| E. Trash and debris contained and disposed of in proper manner? | Yes |
| F. All crew on site displaying hard-hat decals from WEAP training? | Yes |
| G. Speed limit observed by all project personnel? | Yes |
| H. Was construction noise limited to maximum allowed levels (mufflers being used, construction occurring only within allowed hours, vehicle idling minimized etc.) | Yes |
| I. Was existing vehicle and trail access maintained? | Yes |
| J. Did any health and safety incidents occur? | No |
| K. Were there any public complaints? | No |
| L. Was the project shut down for any reason today? | No |
| M. Were there any other incidents to report? | No |
-

Environmental Resources

Monitor: Andrew Steyers

Compliance Level: In Compliance

- | | |
|---|-----|
| A. Were all active work areas and access roads clearly marked with staking or flagging? | Yes |
| B. Did all vehicles and personnel stay in approved work areas? | Yes |
| C. Was fire suppression equipment within 50 feet of each active work area? | Yes |
| D. Were all construction activities completed between 7:00 a.m. and 7:00 p.m.? | Yes |

Salt Creek Daily Inspection

Monitor Date: 4/10/2017

Biological Resources

Monitor: Andrew Steyers

Compliance Level: In Compliance

- A. Were all work activities conducted outside of any established nesting bird buffer, active nests and/or burrows? **Yes**
- B. Were all equipment/vehicles that arrived on site clean and free of vegetative debris/soil? **Yes**
- C. Were any special-status species observed? **No**
- D. Did work activities occur in or adjacent to known locations of Special status plants? **Yes**
Special status plants are known to occur in locations adjacent to the Project boundaries. All work performed today occurred within the Project boundaries, outside of known locations of Special status plants.
- E. Did any construction activity occur within an ESA? **No**
- F. Was the work area surveyed for sensitive species immediately prior to ground-disturbing or vegetation removal activities? **Yes**
- G. Are all open excavations/trenches inspected for entrapped wildlife at least twice daily? **Yes**
- H. Are all large/steep excavations/trenches covered and/or fenced nightly? **Yes**
- I. Are excavations covered or equipped with earthen wildlife escape ramps by the end of the day? **Yes**
-

Cultural Resources

No Cultural Data Collected

Paleontological Resources

No Paleontological Data Collected

Dust Control

Monitor: Andrew Steyers

Compliance Level: In Compliance

- A. Are materials carried off site covered or watered prior to leaving site? **Yes**
- B. Are exposed stockpiles of dirt covered or watered to control fugitive dust? **Yes**
- C. Is all soil material tracked onto paved public roads swept daily? **Yes**
- D. Are all work areas and access roads watered daily if there is persistent fugitive dust is visible beyond the work area boundaries? **Yes**
- E. Are all loads covered or have a minimum of two feet of freeboard? **Yes**
- F. If sustained winds of 20 mph or greater are experienced, were soil disturbing activities terminated? **N/A**
- G. Are rock aprons or rattle/shaker plates installed at the intersections of dirt access routes and paved public roadways? **No**

With the opening of the main gate and "Road A" to traffic, the corridor road gate will no longer be used by the Project and the rattle plates there have been removed.

Salt Creek Daily Inspection

Monitor Date: 4/10/2017

Erosion and Sediment

Monitor: Andrew Steyers

Compliance Level: In Compliance

- | | |
|--|-----|
| A. Are there sufficient quantities of erosion control materials stockpiled at the construction site? | Yes |
| B. Are all locations of temporary stockpiles in approved areas and appropriately protected? | Yes |
| C. Were any rolled erosion control products used?
Straw wattle was used as erosion control. | Yes |
| D. Were rolled erosion products comprised of entirely natural fiber biodegradable materials? | Yes |
-

Hazardous Substances

Monitor: Andrew Steyers

Compliance Level: In Compliance

- | | |
|--|-----|
| A. Is fueling conducted in appropriate areas with appropriate containment and spill materials? | Yes |
| B. Are vehicles and equipment checked for leaks? | Yes |
| C. Were any leaks observed? | No |
| D. Are spills cleaned up and disposed of properly? | Yes |
| E. Are clean-up materials available on site in case of a spill? | Yes |
| F. Was discolored or odiferous soil or groundwater encountered during excavation activities? | No |
-

Waste

Monitor: Andrew Steyers

Compliance Level: In Compliance

- | | |
|--|-----|
| A. Is project-generated litter removed from the construction site daily? | Yes |
| B. Are waste management receptacle levels appropriately maintained? | Yes |

Salt Creek Daily Inspection

Monitor Date: 4/11/2017

Weather Observations

Start Temperature: 55°F Midday Temperature: 65°F End Temperature: 64°F
Weather Conditions: Sunny
Precipitation: None
Cloud Cover: 0

Construction Details

Construction Start Time: 7:00 AM Construction End Time: 3:30 PM

Construction Activities

- | | |
|---|---|
| <input checked="" type="checkbox"/> Mobilize materials equipment or prepared work areas | <input checked="" type="checkbox"/> Installed aboveground facilities |
| <input type="checkbox"/> Cleared or trimmed vegetation | <input type="checkbox"/> Installed landscaping |
| <input type="checkbox"/> Conduct earthwork | <input type="checkbox"/> Demobilized materials equipment or cleaned up work areas |
| <input type="checkbox"/> Developed site drainage facilities | |
| <input checked="" type="checkbox"/> Developed site surfaces | |
| <input type="checkbox"/> Installed underground facilities | |

Was a safety check-in conducted? Y Approximate Number of Construction Personnel On-site: 13

General Notes/Comments Repairing asphalt on Hunte Parkway, wiring in the control room, and importing and spreading Class II base in the substation.

General Issues

Monitor: Andrew Steyers

- | | |
|--|-----|
| A. Workplace limits verified and properly marked? | Yes |
| B. All activities within approved workspace limits? | Yes |
| C. Only approved access roads utilized for ingress and egress? | Yes |
| D. Access road signs in place? | Yes |
| E. Trash and debris contained and disposed of in proper manner? | Yes |
| F. All crew on site displaying hard-hat decals from WEAP training? | Yes |
| G. Speed limit observed by all project personnel? | Yes |
| H. Was construction noise limited to maximum allowed levels (mufflers being used, construction occurring only within allowed hours, vehicle idling minimized etc.) | Yes |
| I. Was existing vehicle and trail access maintained? | Yes |
| J. Did any health and safety incidents occur? | No |
| K. Were there any public complaints? | No |
| L. Was the project shut down for any reason today? | No |
| M. Were there any other incidents to report? | No |
-

Environmental Resources

Monitor: Andrew Steyers

Compliance Level: In Compliance

- | | |
|---|-----|
| A. Were all active work areas and access roads clearly marked with staking or flagging? | Yes |
| B. Did all vehicles and personnel stay in approved work areas? | Yes |
| C. Was fire suppression equipment within 50 feet of each active work area? | Yes |
| D. Were all construction activities completed between 7:00 a.m. and 7:00 p.m.? | Yes |

Salt Creek Daily Inspection

Monitor Date: 4/11/2017

Biological Resources

Monitor: Andrew Steyers

Compliance Level: In Compliance

- | | |
|---|-----|
| A. Were all work activities conducted outside of any established nesting bird buffer, active nests and/or burrows? | Yes |
| B. Were all equipment/vehicles that arrived on site clean and free of vegetative debris/soil? | Yes |
| C. Were any special-status species observed? | No |
| D. Did work activities occur in or adjacent to known locations of Special status plants?
Special status plants are known to occur in locations adjacent to the Project boundaries. All work performed today occurred within the Project boundaries, outside of known locations of Special status plants. | Yes |
| E. Did any construction activity occur within an ESA? | No |
| F. Was the work area surveyed for sensitive species immediately prior to ground-disturbing or vegetation removal activities? | Yes |
| G. Are all open excavations/trenches inspected for entrapped wildlife at least twice daily? | Yes |
| H. Are all large/steep excavations/trenches covered and/or fenced nightly? | Yes |
| I. Are excavations covered or equipped with earthen wildlife escape ramps by the end of the day? | Yes |
-

Cultural Resources

No Cultural Data Collected

Paleontological Resources

No Paleontological Data Collected

Dust Control

Monitor: Andrew Steyers

Compliance Level: In Compliance

- | | |
|---|-----|
| A. Are materials carried off site covered or watered prior to leaving site? | Yes |
| B. Are exposed stockpiles of dirt covered or watered to control fugitive dust? | Yes |
| C. Is all soil material tracked onto paved public roads swept daily? | Yes |
| D. Are all work areas and access roads watered daily if there is persistent fugitive dust is visible beyond the work area boundaries? | Yes |
| E. Are all loads covered or have a minimum of two feet of freeboard? | Yes |
| F. If sustained winds of 20 mph or greater are experienced, were soil disturbing activities terminated? | N/A |
| G. Are rock aprons or rattle/shaker plates installed at the intersections of dirt access routes and paved public roadways? | No |

With the opening of the main gate and "Road A" to traffic, the corridor road gate will no longer be used by the Project and the rattle plates there have been removed.

Salt Creek Daily Inspection

Monitor Date: 4/11/2017

Erosion and Sediment

Monitor: Andrew Steyers

Compliance Level: In Compliance

- A. Are there sufficient quantities of erosion control materials stockpiled at the construction site? **Yes**
 - B. Are all locations of temporary stockpiles in approved areas and appropriately protected? **Yes**
 - C. Were any rolled erosion control products used? **Yes**
Straw wattle were used as erosion control.
 - D. Were rolled erosion products comprised of entirely natural fiber biodegradable materials? **Yes**
-

Hazardous Substances

Monitor: Andrew Steyers

Compliance Level: In Compliance

- A. Is fueling conducted in appropriate areas with appropriate containment and spill materials? **Yes**
 - B. Are vehicles and equipment checked for leaks? **Yes**
 - C. Were any leaks observed? **No**
 - D. Are spills cleaned up and disposed of properly? **Yes**
 - E. Are clean-up materials available on site in case of a spill? **Yes**
 - F. Was discolored or odiferous soil or groundwater encountered during excavation activities? **No**
-

Waste

Monitor: Andrew Steyers

Compliance Level: In Compliance

- A. Is project-generated litter removed from the construction site daily? **Yes**
- B. Are waste management receptacle levels appropriately maintained? **Yes**

Salt Creek Daily Inspection

Monitor Date: 4/12/2017

Weather Observations

Start Temperature: 55°F Midday Temperature: 65°F End Temperature: 65°F
Weather Conditions: Sunny
Precipitation: None
Cloud Cover: 0

Construction Details

Construction Start Time: 7:00 AM Construction End Time: 3:30 PM

Construction Activities

- | | |
|---|---|
| <input checked="" type="checkbox"/> Mobilize materials equipment or prepared work areas | <input checked="" type="checkbox"/> Installed aboveground facilities |
| <input type="checkbox"/> Cleared or trimmed vegetation | <input type="checkbox"/> Installed landscaping |
| <input type="checkbox"/> Conduct earthwork | <input type="checkbox"/> Demobilized materials equipment or cleaned up work areas |
| <input type="checkbox"/> Developed site drainage facilities | |
| <input checked="" type="checkbox"/> Developed site surfaces | |
| <input type="checkbox"/> Installed underground facilities | |

Was a safety check-in conducted? Y Approximate Number of Construction Personnel On-site: 15

General Notes/Comments Asphalt repair on Hunte Parkway, importing and installing Class 2 base in the substation, and control room wiring.

General Issues

Monitor: Andrew Steyers

- | | |
|--|-----|
| A. Workplace limits verified and properly marked? | Yes |
| B. All activities within approved workspace limits? | Yes |
| C. Only approved access roads utilized for ingress and egress? | Yes |
| D. Access road signs in place? | Yes |
| E. Trash and debris contained and disposed of in proper manner? | Yes |
| F. All crew on site displaying hard-hat decals from WEAP training? | Yes |
| G. Speed limit observed by all project personnel? | Yes |
| H. Was construction noise limited to maximum allowed levels (mufflers being used, construction occurring only within allowed hours, vehicle idling minimized etc.) | Yes |
| I. Was existing vehicle and trail access maintained? | Yes |
| J. Did any health and safety incidents occur? | No |
| K. Were there any public complaints? | No |
| L. Was the project shut down for any reason today? | No |
| M. Were there any other incidents to report? | No |
-

Environmental Resources

Monitor: Andrew Steyers

Compliance Level: In Compliance

- | | |
|---|-----|
| A. Were all active work areas and access roads clearly marked with staking or flagging? | Yes |
| B. Did all vehicles and personnel stay in approved work areas? | Yes |
| C. Was fire suppression equipment within 50 feet of each active work area? | Yes |
| D. Were all construction activities completed between 7:00 a.m. and 7:00 p.m.? | Yes |

Salt Creek Daily Inspection

Monitor Date: 4/12/2017

Biological Resources

Monitor: Andrew Steyers

Compliance Level: In Compliance

- | | |
|---|-----|
| A. Were all work activities conducted outside of any established nesting bird buffer, active nests and/or burrows? | Yes |
| B. Were all equipment/vehicles that arrived on site clean and free of vegetative debris/soil? | Yes |
| C. Were any special-status species observed? | No |
| D. Did work activities occur in or adjacent to known locations of Special status plants?
Special status plants are known to occur in locations adjacent to the Project boundaries. All work performed today occurred within the Project boundaries, outside of known locations of Special status plants. | Yes |
| E. Did any construction activity occur within an ESA? | No |
| F. Was the work area surveyed for sensitive species immediately prior to ground-disturbing or vegetation removal activities? | Yes |
| G. Are all open excavations/trenches inspected for entrapped wildlife at least twice daily? | Yes |
| H. Are all large/steep excavations/trenches covered and/or fenced nightly? | Yes |
| I. Are excavations covered or equipped with earthen wildlife escape ramps by the end of the day? | Yes |
-

Cultural Resources

No Cultural Data Collected

Paleontological Resources

No Paleontological Data Collected

Dust Control

Monitor: Andrew Steyers

Compliance Level: In Compliance

- | | |
|---|-----|
| A. Are materials carried off site covered or watered prior to leaving site? | Yes |
| B. Are exposed stockpiles of dirt covered or watered to control fugitive dust? | Yes |
| C. Is all soil material tracked onto paved public roads swept daily? | Yes |
| D. Are all work areas and access roads watered daily if there is persistent fugitive dust is visible beyond the work area boundaries? | Yes |
| E. Are all loads covered or have a minimum of two feet of freeboard? | Yes |
| F. If sustained winds of 20 mph or greater are experienced, were soil disturbing activities terminated? | N/A |
| G. Are rock aprons or rattle/shaker plates installed at the intersections of dirt access routes and paved public roadways? | No |

With the opening of the main gate and "Road A" to traffic, the corridor road gate will no longer be used by the Project and the rattle plates there have been removed.

Salt Creek Daily Inspection

Monitor Date: 4/12/2017

Erosion and Sediment

Monitor: Andrew Steyers

Compliance Level: In Compliance

- A. Are there sufficient quantities of erosion control materials stockpiled at the construction site? **Yes**
 - B. Are all locations of temporary stockpiles in approved areas and appropriately protected? **Yes**
 - C. Were any rolled erosion control products used? **Yes**
Straw wattle were used as erosion control.
 - D. Were rolled erosion products comprised of entirely natural fiber biodegradable materials? **Yes**
-

Hazardous Substances

Monitor: Andrew Steyers

Compliance Level: In Compliance

- A. Is fueling conducted in appropriate areas with appropriate containment and spill materials? **Yes**
 - B. Are vehicles and equipment checked for leaks? **Yes**
 - C. Were any leaks observed? **No**
 - D. Are spills cleaned up and disposed of properly? **Yes**
 - E. Are clean-up materials available on site in case of a spill? **Yes**
 - F. Was discolored or odiferous soil or groundwater encountered during excavation activities? **No**
-

Waste

Monitor: Andrew Steyers

Compliance Level: In Compliance

- A. Is project-generated litter removed from the construction site daily? **Yes**
- B. Are waste management receptacle levels appropriately maintained? **Yes**

Salt Creek Daily Inspection

Monitor Date: 4/13/2017

Weather Observations

Start Temperature: 59°F Midday Temperature: 66°F End Temperature: 70°F
Weather Conditions: Cloudy
Precipitation: None
Cloud Cover: 80

Construction Details

Construction Start Time: 7:00 AM Construction End Time: 3:30 PM

Construction Activities

- | | |
|---|---|
| <input checked="" type="checkbox"/> Mobilize materials equipment or prepared work areas | <input checked="" type="checkbox"/> Installed aboveground facilities |
| <input type="checkbox"/> Cleared or trimmed vegetation | <input type="checkbox"/> Installed landscaping |
| <input type="checkbox"/> Conduct earthwork | <input type="checkbox"/> Demobilized materials equipment or cleaned up work areas |
| <input type="checkbox"/> Developed site drainage facilities | |
| <input checked="" type="checkbox"/> Developed site surfaces | |
| <input type="checkbox"/> Installed underground facilities | |

Was a safety check-in conducted? Y Approximate Number of Construction Personnel On-site: 13

General Notes/Comments Trucks were hauling in remaining loads of of Class II base. Equipment on site was used to spread and compact base materials throughout substation, and an SDG&E crew was working on control room wiring. One new piece of equipment was brought in on a flat-bed truck. The machine, CAT-210K, SB4N76, was inspected for leaks, debris, and appropriate tier number before signing in.

General Issues

Monitor: Emma Fraser

- | | |
|--|-----|
| A. Workplace limits verified and properly marked? | Yes |
| B. All activities within approved workspace limits? | Yes |
| C. Only approved access roads utilized for ingress and egress? | Yes |
| D. Access road signs in place? | Yes |
| E. Trash and debris contained and disposed of in proper manner? | Yes |
| F. All crew on site displaying hard-hat decals from WEAP training? | Yes |
| G. Speed limit observed by all project personnel? | Yes |
| H. Was construction noise limited to maximum allowed levels (mufflers being used, construction occurring only within allowed hours, vehicle idling minimized etc.) | Yes |
| I. Was existing vehicle and trail access maintained? | Yes |
| J. Did any health and safety incidents occur? | No |
| K. Were there any public complaints? | No |
| L. Was the project shut down for any reason today? | No |
| M. Were there any other incidents to report? | No |
-

Environmental Resources

Monitor: Emma Fraser

Compliance Level: In Compliance

- | | |
|---|-----|
| A. Were all active work areas and access roads clearly marked with staking or flagging? | Yes |
| B. Did all vehicles and personnel stay in approved work areas? | Yes |
| C. Was fire suppression equipment within 50 feet of each active work area? | Yes |
| D. Were all construction activities completed between 7:00 a.m. and 7:00 p.m.? | Yes |

Salt Creek Daily Inspection

Monitor Date: 4/13/2017

Biological Resources

Monitor: Emma Fraser

Compliance Level: In Compliance

- A. Were all work activities conducted outside of any established nesting bird buffer, active nests and/or burrows? **Yes**
- B. Were all equipment/vehicles that arrived on site clean and free of vegetative debris/soil? **Yes**
- C. Were any special-status species observed? **No**
- D. Did work activities occur in or adjacent to known locations of Special status plants? **Yes**
Special status plants are known to occur in locations adjacent to the Project boundaries. All work performed today occurred within the Project boundaries, outside of known locations of Special status plants.
- E. Did any construction activity occur within an ESA? **No**
- F. Was the work area surveyed for sensitive species immediately prior to ground-disturbing or vegetation removal activities? **Yes**
- G. Are all open excavations/trenches inspected for entrapped wildlife at least twice daily? **Yes**
- H. Are all large/steep excavations/trenches covered and/or fenced nightly? **Yes**
- I. Are excavations covered or equipped with earthen wildlife escape ramps by the end of the day? **Yes**
-

Cultural Resources

No Cultural Data Collected

Paleontological Resources

No Paleontological Data Collected

Dust Control

Monitor: Emma Fraser

Compliance Level: In Compliance

- A. Are materials carried off site covered or watered prior to leaving site? **Yes**
- B. Are exposed stockpiles of dirt covered or watered to control fugitive dust? **Yes**
- C. Is all soil material tracked onto paved public roads swept daily? **Yes**
- D. Are all work areas and access roads watered daily if there is persistent fugitive dust is visible beyond the work area boundaries? **Yes**
- E. Are all loads covered or have a minimum of two feet of freeboard? **Yes**
- F. If sustained winds of 20 mph or greater are experienced, were soil disturbing activities terminated? **N/A**
- G. Are rock aprons or rattle/shaker plates installed at the intersections of dirt access routes and paved public roadways? **No**

With the opening of the main gate and "Road A" to traffic, the corridor road gate will no longer be used by the Project and the rattle plates there have been removed.

Salt Creek Daily Inspection

Monitor Date: 4/13/2017

Erosion and Sediment

Monitor: Emma Fraser

Compliance Level: In Compliance

- | | |
|--|-----|
| A. Are there sufficient quantities of erosion control materials stockpiled at the construction site? | Yes |
| B. Are all locations of temporary stockpiles in approved areas and appropriately protected? | Yes |
| C. Were any rolled erosion control products used?
Straw wattle were used as erosion control. | Yes |
| D. Were rolled erosion products comprised of entirely natural fiber biodegradable materials? | Yes |
-

Hazardous Substances

Monitor: Emma Fraser

Compliance Level: In Compliance

- | | |
|--|-----|
| A. Is fueling conducted in appropriate areas with appropriate containment and spill materials? | Yes |
| B. Are vehicles and equipment checked for leaks? | Yes |
| C. Were any leaks observed? | No |
| D. Are spills cleaned up and disposed of properly? | Yes |
| E. Are clean-up materials available on site in case of a spill? | Yes |
| F. Was discolored or odiferous soil or groundwater encountered during excavation activities? | No |
-

Waste

Monitor: Emma Fraser

Compliance Level: In Compliance

- | | |
|--|-----|
| A. Is project-generated litter removed from the construction site daily? | Yes |
| B. Are waste management receptacle levels appropriately maintained? | Yes |

Salt Creek Daily Inspection

Monitor Date: 4/14/2017

Weather Observations

Start Temperature: 54°F Midday Temperature: 62°F End Temperature: 68°F
Weather Conditions: Partially Sunny
Precipitation: None
Cloud Cover: 50

Construction Details

Construction Start Time: 7:00 AM Construction End Time: 3:30 PM

Construction Activities

- | | |
|---|--|
| <input checked="" type="checkbox"/> Mobilize materials equipment or prepared work areas | <input checked="" type="checkbox"/> Installed aboveground facilities |
| <input type="checkbox"/> Cleared or trimmed vegetation | <input type="checkbox"/> Installed landscaping |
| <input type="checkbox"/> Conduct earthwork | <input checked="" type="checkbox"/> Demobilized materials equipment or cleaned up work areas |
| <input type="checkbox"/> Developed site drainage facilities | Transported three pieces of equipment off-site (front loader, skip loader, roller). |
| <input checked="" type="checkbox"/> Developed site surfaces | |
| <input type="checkbox"/> Installed underground facilities | |

Was a safety check-in conducted? Y Approximate Number of Construction Personnel On-site: 15

General Notes/Comments Hauled in remaining truckloads of Class II base and developed site surfaces (i.e. spread and compacted base material throughout substation). The SDGE crew was working on control room wiring. Three pieces of equipment were demobilized (front loader, skip loader, and roller) for removal from the site.

General Issues

Monitor: Emma Fraser

- | | |
|--|-----|
| A. Workplace limits verified and properly marked? | Yes |
| B. All activities within approved workspace limits? | Yes |
| C. Only approved access roads utilized for ingress and egress? | Yes |
| D. Access road signs in place? | Yes |
| E. Trash and debris contained and disposed of in proper manner? | Yes |
| F. All crew on site displaying hard-hat decals from WEAP training? | Yes |
| G. Speed limit observed by all project personnel? | Yes |
| H. Was construction noise limited to maximum allowed levels (mufflers being used, construction occurring only within allowed hours, vehicle idling minimized etc.) | Yes |
| I. Was existing vehicle and trail access maintained? | Yes |
| J. Did any health and safety incidents occur? | No |
| K. Were there any public complaints? | No |
| L. Was the project shut down for any reason today? | No |
| M. Were there any other incidents to report? | No |
-

Environmental Resources

Monitor: Emma Fraser

Compliance Level: In Compliance

- | | |
|---|-----|
| A. Were all active work areas and access roads clearly marked with staking or flagging? | Yes |
| B. Did all vehicles and personnel stay in approved work areas? | Yes |
| C. Was fire suppression equipment within 50 feet of each active work area? | Yes |
| D. Were all construction activities completed between 7:00 a.m. and 7:00 p.m.? | Yes |

Salt Creek Daily Inspection

Monitor Date: 4/14/2017

Biological Resources

Monitor: Emma Fraser

Compliance Level: In Compliance

- A. Were all work activities conducted outside of any established nesting bird buffer, active nests and/or burrows? **Yes**
- B. Were all equipment/vehicles that arrived on site clean and free of vegetative debris/soil? **Yes**
- C. Were any special-status species observed? **No**
- D. Did work activities occur in or adjacent to known locations of Special status plants? **Yes**
Special status plants are known to occur in locations adjacent to the Project boundaries. All work performed today occurred within the Project boundaries, outside of known locations of Special status plants.
- E. Did any construction activity occur within an ESA? **No**
- F. Was the work area surveyed for sensitive species immediately prior to ground-disturbing or vegetation removal activities? **Yes**
- G. Are all open excavations/trenches inspected for entrapped wildlife at least twice daily? **Yes**
- H. Are all large/steep excavations/trenches covered and/or fenced nightly? **Yes**
- I. Are excavations covered or equipped with earthen wildlife escape ramps by the end of the day? **Yes**
-

Cultural Resources

No Cultural Data Collected

Paleontological Resources

No Paleontological Data Collected

Dust Control

Monitor: Emma Fraser

Compliance Level: In Compliance

- A. Are materials carried off site covered or watered prior to leaving site? **Yes**
- B. Are exposed stockpiles of dirt covered or watered to control fugitive dust? **Yes**
- C. Is all soil material tracked onto paved public roads swept daily? **Yes**
- D. Are all work areas and access roads watered daily if there is persistent fugitive dust is visible beyond the work area boundaries? **Yes**
- E. Are all loads covered or have a minimum of two feet of freeboard? **Yes**
- F. If sustained winds of 20 mph or greater are experienced, were soil disturbing activities terminated? **N/A**
- G. Are rock aprons or rattle/shaker plates installed at the intersections of dirt access routes and paved public roadways? **No**

With the opening of the main gate and "Road A" to traffic, the corridor road gate will no longer be used by the Project and the rattle plates there have been removed.

Salt Creek Daily Inspection

Monitor Date: 4/14/2017

Erosion and Sediment

Monitor: Emma Fraser

Compliance Level: In Compliance

- | | |
|--|-----|
| A. Are there sufficient quantities of erosion control materials stockpiled at the construction site? | Yes |
| B. Are all locations of temporary stockpiles in approved areas and appropriately protected? | Yes |
| C. Were any rolled erosion control products used?
Straw wattle were used for erosion control. | Yes |
| D. Were rolled erosion products comprised of entirely natural fiber biodegradable materials? | Yes |
-

Hazardous Substances

Monitor: Emma Fraser

Compliance Level: In Compliance

- | | |
|--|-----|
| A. Is fueling conducted in appropriate areas with appropriate containment and spill materials? | Yes |
| B. Are vehicles and equipment checked for leaks? | Yes |
| C. Were any leaks observed? | No |
| D. Are spills cleaned up and disposed of properly? | Yes |
| E. Are clean-up materials available on site in case of a spill? | Yes |
| F. Was discolored or odiferous soil or groundwater encountered during excavation activities? | No |
-

Waste

Monitor: Emma Fraser

Compliance Level: In Compliance

- | | |
|--|-----|
| A. Is project-generated litter removed from the construction site daily? | Yes |
| B. Are waste management receptacle levels appropriately maintained? | Yes |

Salt Creek Daily Inspection

Monitor Date: 4/15/2017

Weather Observations

Start Temperature: 55°F Midday Temperature: 67°F End Temperature: 67°F
Weather Conditions: Sunny
Precipitation: None
Cloud Cover: 0

Construction Details

Construction Start Time: 6:30 AM Construction End Time: 2:30 PM

Construction Activities

- | | |
|---|---|
| <input checked="" type="checkbox"/> Mobilize materials equipment or prepared work areas | <input checked="" type="checkbox"/> Installed aboveground facilities |
| <input type="checkbox"/> Cleared or trimmed vegetation | <input type="checkbox"/> Installed landscaping |
| <input type="checkbox"/> Conduct earthwork | <input type="checkbox"/> Demobilized materials equipment or cleaned up work areas |
| <input type="checkbox"/> Developed site drainage facilities | |
| <input type="checkbox"/> Developed site surfaces | |
| <input type="checkbox"/> Installed underground facilities | |

Was a safety check-in conducted? Y Approximate Number of Construction Personnel On-site: 3

General Notes/Comments Control room wiring.

General Issues

Monitor: Andrew Steyers

- | | |
|--|-----|
| A. Workplace limits verified and properly marked? | Yes |
| B. All activities within approved workspace limits? | Yes |
| C. Only approved access roads utilized for ingress and egress? | Yes |
| D. Access road signs in place? | Yes |
| E. Trash and debris contained and disposed of in proper manner? | Yes |
| F. All crew on site displaying hard-hat decals from WEAP training? | Yes |
| G. Speed limit observed by all project personnel? | Yes |
| H. Was construction noise limited to maximum allowed levels (mufflers being used, construction occurring only within allowed hours, vehicle idling minimized etc.) | Yes |
| I. Was existing vehicle and trail access maintained? | Yes |
| J. Did any health and safety incidents occur? | No |
| K. Were there any public complaints? | No |
| L. Was the project shut down for any reason today? | No |
| M. Were there any other incidents to report? | No |
-

Environmental Resources

Monitor: Andrew Steyers

Compliance Level: In Compliance

- | | |
|---|-----|
| A. Were all active work areas and access roads clearly marked with staking or flagging? | Yes |
| B. Did all vehicles and personnel stay in approved work areas? | Yes |
| C. Was fire suppression equipment within 50 feet of each active work area? | Yes |
| D. Were all construction activities completed between 7:00 a.m. and 7:00 p.m.? | No |

With prior permission from the City of Chula Vista, SDG&E crews began work at 6:30 a.m.

Salt Creek Daily Inspection

Monitor Date: 4/15/2017

Biological Resources

Monitor: Andrew Steyers

Compliance Level: In Compliance

- A. Were all work activities conducted outside of any established nesting bird buffer, active nests and/or burrows? **Yes**
- B. Were all equipment/vehicles that arrived on site clean and free of vegetative debris/soil? **Yes**
- C. Were any special-status species observed? **No**
- D. Did work activities occur in or adjacent to known locations of Special status plants? **Yes**
Special status plants are known to occur in locations adjacent to the Project boundaries. All work performed today occurred within the Project boundaries, outside of known locations of Special status plants.
- E. Did any construction activity occur within an ESA? **No**
- F. Was the work area surveyed for sensitive species immediately prior to ground-disturbing or vegetation removal activities? **Yes**
- G. Are all open excavations/trenches inspected for entrapped wildlife at least twice daily? **Yes**
- H. Are all large/steep excavations/trenches covered and/or fenced nightly? **Yes**
- I. Are excavations covered or equipped with earthen wildlife escape ramps by the end of the day? **Yes**
-

Cultural Resources

No Cultural Data Collected

Paleontological Resources

No Paleontological Data Collected

Dust Control

Monitor: Andrew Steyers

Compliance Level: In Compliance

- A. Are materials carried off site covered or watered prior to leaving site? **Yes**
- B. Are exposed stockpiles of dirt covered or watered to control fugitive dust? **Yes**
- C. Is all soil material tracked onto paved public roads swept daily? **Yes**
- D. Are all work areas and access roads watered daily if there is persistent fugitive dust is visible beyond the work area boundaries? **Yes**
- E. Are all loads covered or have a minimum of two feet of freeboard? **Yes**
- F. If sustained winds of 20 mph or greater are experienced, were soil disturbing activities terminated? **N/A**
- G. Are rock aprons or rattle/shaker plates installed at the intersections of dirt access routes and paved public roadways? **No**

With the opening of the main gate and "Road A" to traffic, the corridor road gate will no longer be used by the Project and the rattle plates there have been removed.

Salt Creek Daily Inspection

Monitor Date: 4/15/2017

Erosion and Sediment

Monitor: Andrew Steyers

Compliance Level: In Compliance

- A. Are there sufficient quantities of erosion control materials stockpiled at the construction site? **Yes**
 - B. Are all locations of temporary stockpiles in approved areas and appropriately protected? **Yes**
 - C. Were any rolled erosion control products used? **Yes**
Straw wattle was used as erosion control.
 - D. Were rolled erosion products comprised of entirely natural fiber biodegradable materials? **Yes**
-

Hazardous Substances

Monitor: Andrew Steyers

Compliance Level: In Compliance

- A. Is fueling conducted in appropriate areas with appropriate containment and spill materials? **Yes**
 - B. Are vehicles and equipment checked for leaks? **Yes**
 - C. Were any leaks observed? **No**
 - D. Are spills cleaned up and disposed of properly? **Yes**
 - E. Are clean-up materials available on site in case of a spill? **Yes**
 - F. Was discolored or odiferous soil or groundwater encountered during excavation activities? **No**
-

Waste

Monitor: Andrew Steyers

Compliance Level: In Compliance

- A. Is project-generated litter removed from the construction site daily? **Yes**
- B. Are waste management receptacle levels appropriately maintained? **Yes**

ATTACHMENT C: MMCRP CHECKLIST

SALT CREEK SUBSTATION PROJECT

Weekly MMCRP Checklist

Completed by: Andrew Steyers
 Organization: Blackhawk Environmental
 Position: LEI

Day of the Week	Mon	Tue	Wed	Thu	Fri	Sat	Sun
Date (mm/dd/yy)	4/10/17	4/11/17	4/12/17	4/13/17	4/14/17	4/15/17	
A. Daily Work Hours and Workforce							
Start Time (hh:mm am/pm)	7:00 am	7:00 am	7:00 am	7:00 am	7:00 am	6:30 am	
Stop Time	3:30 pm	3:30 pm	3:30 pm	3:30 pm	3:30 pm	2:30 pm	
Construction Personnel Onsite	13	13	15	13	15	3	
Compliance Personnel Onsite	1	1	1	1	1	1	
Total Personnel Onsite	14	14	16	14	16	4	0
B. Daily Construction Activities – Check only if applicable							
1. Mobilized materials/equipment or prepared work areas	<input checked="" type="checkbox"/>	<input checked="" type="checkbox"/>	<input checked="" type="checkbox"/>	<input checked="" type="checkbox"/>	<input checked="" type="checkbox"/>	<input checked="" type="checkbox"/>	<input type="checkbox"/>
2. Cleared or trimmed vegetation	<input type="checkbox"/>	<input type="checkbox"/>	<input type="checkbox"/>	<input type="checkbox"/>	<input type="checkbox"/>	<input type="checkbox"/>	<input type="checkbox"/>
3. Conducted earthwork (grading, trenching, or other ground disturbance)	<input type="checkbox"/>	<input type="checkbox"/>	<input type="checkbox"/>	<input type="checkbox"/>	<input type="checkbox"/>	<input type="checkbox"/>	<input type="checkbox"/>
4. Developed site surfaces (substation pad or access roads)	<input checked="" type="checkbox"/>	<input checked="" type="checkbox"/>	<input checked="" type="checkbox"/>	<input checked="" type="checkbox"/>	<input checked="" type="checkbox"/>	<input type="checkbox"/>	<input type="checkbox"/>
5. Developed site drainage facilities	<input type="checkbox"/>	<input type="checkbox"/>	<input type="checkbox"/>	<input type="checkbox"/>	<input type="checkbox"/>	<input type="checkbox"/>	<input type="checkbox"/>
6. Installed underground facilities	<input type="checkbox"/>	<input type="checkbox"/>	<input type="checkbox"/>	<input type="checkbox"/>	<input type="checkbox"/>	<input type="checkbox"/>	<input type="checkbox"/>
7. Installed aboveground facilities	<input checked="" type="checkbox"/>	<input checked="" type="checkbox"/>	<input checked="" type="checkbox"/>	<input checked="" type="checkbox"/>	<input checked="" type="checkbox"/>	<input checked="" type="checkbox"/>	<input type="checkbox"/>
8. Installed landscaping	<input type="checkbox"/>	<input type="checkbox"/>	<input type="checkbox"/>	<input type="checkbox"/>	<input type="checkbox"/>	<input type="checkbox"/>	<input type="checkbox"/>
9. Demobilized materials/equipment or cleaned up work areas	<input type="checkbox"/>	<input type="checkbox"/>	<input type="checkbox"/>	<input type="checkbox"/>	<input type="checkbox"/>	<input type="checkbox"/>	<input type="checkbox"/>
10. Other	<input type="checkbox"/>	<input type="checkbox"/>	<input type="checkbox"/>	<input type="checkbox"/>	<input type="checkbox"/>	<input type="checkbox"/>	<input type="checkbox"/>
C. Daily Compliance Activities – Check only if applicable and implemented adequately without incident							
Avoidance and Minimization, and General Monitoring							
1. Limited activities to approved work areas and access roads (APM BIO-2 and MM Biology-1a)	<input checked="" type="checkbox"/>	<input checked="" type="checkbox"/>	<input checked="" type="checkbox"/>	<input checked="" type="checkbox"/>	<input checked="" type="checkbox"/>	<input checked="" type="checkbox"/>	<input type="checkbox"/>
2. Limited dust generation and emissions to required thresholds (APM AIR-1, APM AIR-2, MM Air-1, MM Biology-1a, and MM GHG-1)	<input checked="" type="checkbox"/>	<input checked="" type="checkbox"/>	<input checked="" type="checkbox"/>	<input checked="" type="checkbox"/>	<input checked="" type="checkbox"/>	<input checked="" type="checkbox"/>	<input type="checkbox"/>
3. Avoided sensitive plant habitat (APM BIO-2, MM Biology-1a, MM Biology-2, and MM Biology-9)	<input checked="" type="checkbox"/>	<input checked="" type="checkbox"/>	<input checked="" type="checkbox"/>	<input checked="" type="checkbox"/>	<input checked="" type="checkbox"/>	<input checked="" type="checkbox"/>	<input type="checkbox"/>
4. Avoided sensitive wildlife habitat (APM BIO-3, MM Biology-1a, MM Biology-7, and MM Biology-8)	<input checked="" type="checkbox"/>	<input checked="" type="checkbox"/>	<input checked="" type="checkbox"/>	<input checked="" type="checkbox"/>	<input checked="" type="checkbox"/>	<input checked="" type="checkbox"/>	<input type="checkbox"/>
5. Avoided active bird nests or burrows (APM BIO-1, APM BIO-2, MM Biology-1a, and MM Biology-6)	<input checked="" type="checkbox"/>	<input checked="" type="checkbox"/>	<input checked="" type="checkbox"/>	<input checked="" type="checkbox"/>	<input checked="" type="checkbox"/>	<input checked="" type="checkbox"/>	<input type="checkbox"/>
6. Avoided sensitive water features and aquatic habitat (APM HAZ-1, MM Biology-1a, and APM HYDRO-2)	<input checked="" type="checkbox"/>	<input checked="" type="checkbox"/>	<input checked="" type="checkbox"/>	<input checked="" type="checkbox"/>	<input checked="" type="checkbox"/>	<input checked="" type="checkbox"/>	<input type="checkbox"/>
7. Installed/maintained erosion or sediment controls (APM BIO-2, APM BIO-4, MM Biology-1a, MM Geology-1, APM HYDRO-1, and MM Hydro-2)	<input checked="" type="checkbox"/>	<input checked="" type="checkbox"/>	<input checked="" type="checkbox"/>	<input checked="" type="checkbox"/>	<input checked="" type="checkbox"/>	<input checked="" type="checkbox"/>	<input type="checkbox"/>
8. Implemented invasive weed measures (MM Biology-3)	<input checked="" type="checkbox"/>	<input checked="" type="checkbox"/>	<input checked="" type="checkbox"/>	<input checked="" type="checkbox"/>	<input checked="" type="checkbox"/>	<input checked="" type="checkbox"/>	<input type="checkbox"/>

Weekly MMCRP Checklist

Day of the Week	Mon	Tue	Wed	Thu	Fri	Sat	Sun
Dates	4/10/17	4/11/17	4/12/17	4/13/17	4/14/17	4/15/17	
9. Managed hazardous materials and waste (APM BIO-2, MM Biology-1a, APM HAZ-1, and APM HAZ-2)	<input checked="" type="checkbox"/>	<input checked="" type="checkbox"/>	<input checked="" type="checkbox"/>	<input checked="" type="checkbox"/>	<input checked="" type="checkbox"/>	<input checked="" type="checkbox"/>	<input type="checkbox"/>
10. Implemented fire prevention measures (MM Biology-1a, APM HAZ-3, and MM Hazards-2)	<input checked="" type="checkbox"/>	<input checked="" type="checkbox"/>	<input checked="" type="checkbox"/>	<input checked="" type="checkbox"/>	<input checked="" type="checkbox"/>	<input checked="" type="checkbox"/>	<input type="checkbox"/>
11. Avoided known cultural, paleontological, and tribal resources (APM CUL-2, APM CUL-7, MM Cultural Resources-1, MM Cultural Resources-2, MM Cultural Resources-3, MM Cultural Resources-4, and MM Cultural Paleontology-1)	<input checked="" type="checkbox"/>	<input checked="" type="checkbox"/>	<input checked="" type="checkbox"/>	<input checked="" type="checkbox"/>	<input checked="" type="checkbox"/>	<input checked="" type="checkbox"/>	<input type="checkbox"/>
12. Limited construction noise to maximum levels (APM NOISE-1, APM NOISE-3, MM Noise-1, and MM Noise-2)	<input checked="" type="checkbox"/>	<input checked="" type="checkbox"/>	<input checked="" type="checkbox"/>	<input checked="" type="checkbox"/>	<input checked="" type="checkbox"/>	<input checked="" type="checkbox"/>	<input type="checkbox"/>
13. Maintain existing vehicle and trail access (APM REC-1, MM Recreation-2, APM TRANS-1, and MM Traffic-3)	<input checked="" type="checkbox"/>	<input checked="" type="checkbox"/>	<input checked="" type="checkbox"/>	<input checked="" type="checkbox"/>	<input checked="" type="checkbox"/>	<input checked="" type="checkbox"/>	<input type="checkbox"/>
14. Provided workers with required environmental trainings (APM BIO-1, APM BIO-2, MM Biology-1a, APM CUL-1, APM GHG-1, APM HAZ-1, APM HAZ-3, and APM HYDRO-1)	<input checked="" type="checkbox"/>	<input checked="" type="checkbox"/>	<input checked="" type="checkbox"/>	<input checked="" type="checkbox"/>	<input checked="" type="checkbox"/>	<input checked="" type="checkbox"/>	<input type="checkbox"/>
15. Implemented MMCRP procedures	<input checked="" type="checkbox"/>	<input checked="" type="checkbox"/>	<input checked="" type="checkbox"/>	<input checked="" type="checkbox"/>	<input checked="" type="checkbox"/>	<input checked="" type="checkbox"/>	<input type="checkbox"/>
SDG&E Specialty Monitoring							
16. Special-status wildlife (APM BIO-2, MM Biology-1a, MM Biology-7, and MM Biology-8)	<input checked="" type="checkbox"/>	<input checked="" type="checkbox"/>	<input checked="" type="checkbox"/>	<input checked="" type="checkbox"/>	<input checked="" type="checkbox"/>	<input checked="" type="checkbox"/>	<input type="checkbox"/>
17. Nesting birds/burrowing owls (APM BIO-1 and MM Biology-6)	<input checked="" type="checkbox"/>	<input checked="" type="checkbox"/>	<input checked="" type="checkbox"/>	<input checked="" type="checkbox"/>	<input checked="" type="checkbox"/>	<input checked="" type="checkbox"/>	<input type="checkbox"/>
18. Special-status plants (APM BIO-2, MM Biology-1a, MM Biology-3, and MM Biology-1b)	<input checked="" type="checkbox"/>	<input checked="" type="checkbox"/>	<input checked="" type="checkbox"/>	<input checked="" type="checkbox"/>	<input checked="" type="checkbox"/>	<input checked="" type="checkbox"/>	<input type="checkbox"/>
19. Aquatic/hydrologic resources (APM HYDRO-1 and MM Geology-1)	<input checked="" type="checkbox"/>	<input checked="" type="checkbox"/>	<input checked="" type="checkbox"/>	<input checked="" type="checkbox"/>	<input checked="" type="checkbox"/>	<input checked="" type="checkbox"/>	<input type="checkbox"/>
20. SWPPP/reclamation (APM HYDRO-1, MM Geology-1, and MM Biology-11)	<input checked="" type="checkbox"/>	<input checked="" type="checkbox"/>	<input checked="" type="checkbox"/>	<input checked="" type="checkbox"/>	<input checked="" type="checkbox"/>	<input checked="" type="checkbox"/>	<input type="checkbox"/>
21. Cultural resources (APM CUL-2, MM Cultural Resources-1, MM Cultural Resources-2, and MM Cultural Resources-3)	<input checked="" type="checkbox"/>	<input checked="" type="checkbox"/>	<input checked="" type="checkbox"/>	<input checked="" type="checkbox"/>	<input checked="" type="checkbox"/>	<input checked="" type="checkbox"/>	<input type="checkbox"/>
22. Paleontological resources (APM CUL-5, APM CUL-6, and MM Paleontology 1)	<input checked="" type="checkbox"/>	<input checked="" type="checkbox"/>	<input checked="" type="checkbox"/>	<input checked="" type="checkbox"/>	<input checked="" type="checkbox"/>	<input checked="" type="checkbox"/>	<input type="checkbox"/>
23. Tribal resources (MM Cultural Resources-4)	<input checked="" type="checkbox"/>	<input checked="" type="checkbox"/>	<input checked="" type="checkbox"/>	<input checked="" type="checkbox"/>	<input checked="" type="checkbox"/>	<input checked="" type="checkbox"/>	<input type="checkbox"/>
24. Fire management (APM HAZ-3)	<input checked="" type="checkbox"/>	<input checked="" type="checkbox"/>	<input checked="" type="checkbox"/>	<input checked="" type="checkbox"/>	<input checked="" type="checkbox"/>	<input checked="" type="checkbox"/>	<input type="checkbox"/>
D. SDG&E Record of Weekly Incidents							
Compliance Level 1: Occurrences	0	0	0	0	0	0	
Compliance Level 2: Minor Problems	0	0	0	0	0	0	
Compliance Level 3: Compliance Issues	0	0	0	0	0	0	
Compliance Level 4: Noncompliances	0	0	0	0	0	0	
Total Compliance Level Incidents	0	0	0	0	0	0	0
Health and Safety Incidents	0	0	0	0	0	0	
Public Complaints	0	0	0	0	0	0	
Total Incidents	0	0	0	0	0	0	0



Salt Creek Substation Project
WEEKLY ENVIRONMENTAL COMPLIANCE REPORT
April 17 – April 22, 2017

INTRODUCTION

This report provides an overview of construction progress and applicant-proposed measure (APM) and mitigation measure (MM) implementation during construction of the San Diego Gas & Electric Company (SDG&E) Salt Creek Substation Project (Project) during the week ending on April 22, 2017. Work on the Project was conducted by SDG&E, Geo Pacific, Suffolk, and their construction subcontractors.

CONSTRUCTION OVERVIEW

On June 21, 2016, the California Public Utilities Commission (CPUC) issued a Notice to Proceed for construction of the Project. Construction of the Salt Creek Substation kicked off on July 18, 2016. During this reporting period, construction activities occurred April 17– April 22, and are listed in the following section by Project component. A Lead Environmental Inspector (LEI) was on-site April 17 – April 21, but not Saturday April 22. Due to reduced construction activity, monitoring levels have been reduced to Mondays, Wednesdays, and Fridays.

CONSTRUCTION ACTIVITIES

Salt Creek Substation

Construction activities during this reporting period included: prepping for transformer delivery, final grading of the substation pad, weed clearing around the construction trailer, BMP maintenance, removal of construction fencing around lattice-tower parking area, delivery and installation of substation structural steel, delivery and installation of transformer containment-basin grates, and Geo Pacific doing general clean-up and demobilizing. A skiploader and a water truck were demobilized from the site. Liberty also installed grates around the perimeter of one of the large transformers.

WORKER ENVIRONMENTAL AWARENESS PROGRAM

Two new project workers attended the required environmental training as part of the Project Worker Environmental Awareness Program (WEAP). To date, approximately 563 Project personnel have received the required environmental awareness education.

ENVIRONMENTAL COMPLIANCE SUMMARY

The following subsections provide an assessment of environmental resources and a summary of the APMs, MMs, and permit conditions that were implemented during the week ending on April 22, 2017.

Air Quality

A water truck was used to control dust during construction activities. All pavement was kept clean during this reporting period. No winds exceeding 20-mph occurred during work hours.

Biological Resources

During this monitoring period, construction occurred within the project limits of disturbance, adjacent to, but not within, the special-status plant locations. No special-status species were observed during the monitoring period. Pairs of killdeer were observed in the area of the Project, but no other potential for nesting activity was observed onsite.

Cultural and Paleontological Resources

Cultural, Native American, and Paleontological monitors were on-call April 17 – April 22, but were not called to the site as no ground-disturbing construction activities occurred.

Hazardous Materials and Waste

All fueling was conducted in appropriate areas and all vehicles and equipment were checked for leaks. No leaks occurred during this reporting period.

Noise

With prior approval from the City of Chula Vista, SDG&E crews began work in the control shelter at 6:30 a.m. on Saturday, April 22, 2017. All other construction activities during this reporting period were confined to Monday through Friday between 7:00 a.m. and 7:00 p.m.

Traffic and Transportation

The traffic control plan approved by the City of Chula Vista was implemented and general traffic measures were adhered to. The majority of project personnel are parking their personal vehicles within a designated personal vehicle parking area within the project.

Storm Water Compliance

During this reporting period, the project SWPPP and BMPs were implemented in accordance with the SDG&E Water Quality Construction BMP Manual.

The Qualified SWPPP Practitioner performed a weekly site inspection on April 19. There were no SWPPP deficiencies observed during this reporting period.

Non-Compliances

No non-compliances occurred during this reporting period.

ATTACHMENT A: PHOTOGRAPHS

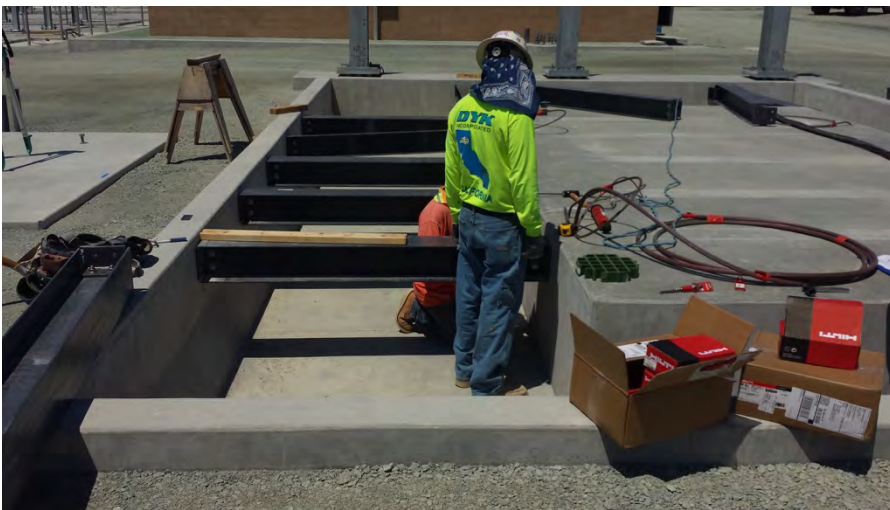


**Salt Creek Substation Project
ENVIRONMENTAL COMPLIANCE STATUS REPORT
Attachment A: Photographs**



Photograph 1:

Delivery and installation of structural steel inside the substation occurred the week of April 22, 2017.



Photograph 2:

Delivery and installation of transformer containment-basin gratings occurred during the week of April 22, 2017.

ATTACHMENT B: DAILY LOGS

Salt Creek Daily Inspection

Monitor Date: 4/17/2017

Weather Observations

Start Temperature: 58°F Midday Temperature: 68°F End Temperature: 68°F
Weather Conditions: Sunny
Precipitation: None
Cloud Cover: 10

Construction Details

Construction Start Time: 7:00 AM Construction End Time: 2:45 PM

Construction Activities

- | | |
|---|--|
| <input checked="" type="checkbox"/> Mobilize materials equipment or prepared work areas | <input type="checkbox"/> Installed aboveground facilities |
| <input checked="" type="checkbox"/> Cleared or trimmed vegetation | <input type="checkbox"/> Installed landscaping |
| <input checked="" type="checkbox"/> Conduct earthwork | <input checked="" type="checkbox"/> Demobilized materials equipment or cleaned up work areas |
| <input type="checkbox"/> Developed site drainage facilities | Observed a small burned area inside the back gate. It appeared that a wood stake and a couple of pieces of |
| <input checked="" type="checkbox"/> Developed site surfaces | |
| <input type="checkbox"/> Installed underground facilities | |

Was a safety check-in conducted? Y Approximate Number of Construction Personnel On-site: 12

General Notes/Comments Prepping for transformer delivery, final grading of the substation pad, Geo Pacific general clean-up and demobilizing, clearing weeds around construction trailer, BMP maintenance, and removal of construction fencing around lattice tower parking area.

General Issues

Monitor: Andrew Steyers

- | | |
|--|-----|
| A. Workplace limits verified and properly marked? | Yes |
| B. All activities within approved workspace limits? | Yes |
| C. Only approved access roads utilized for ingress and egress? | Yes |
| D. Access road signs in place? | Yes |
| E. Trash and debris contained and disposed of in proper manner? | Yes |
| F. All crew on site displaying hard-hat decals from WEAP training? | Yes |
| G. Speed limit observed by all project personnel? | Yes |
| H. Was construction noise limited to maximum allowed levels (mufflers being used, construction occurring only within allowed hours, vehicle idling minimized etc.) | Yes |
| I. Was existing vehicle and trail access maintained? | Yes |
| J. Did any health and safety incidents occur? | No |
| K. Were there any public complaints? | No |
| L. Was the project shut down for any reason today? | No |
| M. Were there any other incidents to report? | No |
-

Environmental Resources

Monitor: Andrew Steyers

Compliance Level: In Compliance

- | | |
|---|-----|
| A. Were all active work areas and access roads clearly marked with staking or flagging? | Yes |
| B. Did all vehicles and personnel stay in approved work areas? | Yes |
| C. Was fire suppression equipment within 50 feet of each active work area? | Yes |
| D. Were all construction activities completed between 7:00 a.m. and 7:00 p.m.? | Yes |

Salt Creek Daily Inspection

Monitor Date: 4/17/2017

Biological Resources

Monitor: Andrew Steyers

Compliance Level: In Compliance

A. Were all work activities conducted outside of any established nesting bird buffer, active nests and/or burrows? **Yes**

B. Were all equipment/vehicles that arrived on site clean and free of vegetative debris/soil? **Yes**

C. Were any special-status species observed? **No**

D. Did work activities occur in or adjacent to known locations of Special status plants? **Yes**

Special status plants are known to occur in locations adjacent to the Project boundaries. All work performed today occurred within the Project boundaries, outside of known locations of Special status plants.

E. Did any construction activity occur within an ESA? **No**

F. Was the work area surveyed for sensitive species immediately prior to ground-disturbing or vegetation removal activities? **Yes**

G. Are all open excavations/trenches inspected for entrapped wildlife at least twice daily? **Yes**

H. Are all large/steep excavations/trenches covered and/or fenced nightly? **Yes**

I. Are excavations covered or equipped with earthen wildlife escape ramps by the end of the day? **Yes**

J. General Notes/Comments

Observed a killdeer pair on the substation pad.

Cultural Resources

No Cultural Data Collected

Paleontological Resources

No Paleontological Data Collected

Dust Control

Monitor: Andrew Steyers

Compliance Level: In Compliance

A. Are materials carried off site covered or watered prior to leaving site? **Yes**

B. Are exposed stockpiles of dirt covered or watered to control fugitive dust? **Yes**

C. Is all soil material tracked onto paved public roads swept daily? **Yes**

D. Are all work areas and access roads watered daily if there is persistent fugitive dust is visible beyond the work area boundaries? **Yes**

E. Are all loads covered or have a minimum of two feet of freeboard? **Yes**

F. If sustained winds of 20 mph or greater are experienced, were soil disturbing activities terminated? **N/A**

G. Are rock aprons or rattle/shaker plates installed at the intersections of dirt access routes and paved public roadways? **No**

With the opening of the main gate and "Road A" to traffic, the corridor road gate will no longer be used by the Project and the rattle plates there have been removed.

Salt Creek Daily Inspection

Monitor Date: 4/17/2017

Erosion and Sediment

Monitor: Andrew Steyers

Compliance Level: In Compliance

- | | |
|--|-----|
| A. Are there sufficient quantities of erosion control materials stockpiled at the construction site? | Yes |
| B. Are all locations of temporary stockpiles in approved areas and appropriately protected? | Yes |
| C. Were any rolled erosion control products used?
Straw wattle were used as erosion control. | Yes |
| D. Were rolled erosion products comprised of entirely natural fiber biodegradable materials? | Yes |
-

Hazardous Substances

Monitor: Andrew Steyers

Compliance Level: In Compliance

- | | |
|--|-----|
| A. Is fueling conducted in appropriate areas with appropriate containment and spill materials? | Yes |
| B. Are vehicles and equipment checked for leaks? | Yes |
| C. Were any leaks observed? | No |
| D. Are spills cleaned up and disposed of properly? | Yes |
| E. Are clean-up materials available on site in case of a spill? | Yes |
| F. Was discolored or odiferous soil or groundwater encountered during excavation activities? | No |
-

Waste

Monitor: Andrew Steyers

Compliance Level: In Compliance

- | | |
|--|-----|
| A. Is project-generated litter removed from the construction site daily? | Yes |
| B. Are waste management receptacle levels appropriately maintained? | Yes |

Salt Creek Daily Inspection

Monitor Date: 4/18/2017

Weather Observations

Start Temperature: 62°F Midday Temperature: 67°F End Temperature: 67°F
Weather Conditions: Sunny
Precipitation: None
Cloud Cover: 0

Construction Details

Construction Start Time: 7:00 AM Construction End Time: 3:00 PM

Construction Activities

- | | |
|---|---|
| <input checked="" type="checkbox"/> Mobilize materials equipment or prepared work areas | <input checked="" type="checkbox"/> Installed aboveground facilities |
| <input type="checkbox"/> Cleared or trimmed vegetation | <input type="checkbox"/> Installed landscaping |
| <input type="checkbox"/> Conduct earthwork | <input type="checkbox"/> Demobilized materials equipment or cleaned up work areas |
| <input type="checkbox"/> Developed site drainage facilities | |
| <input type="checkbox"/> Developed site surfaces | |
| <input type="checkbox"/> Installed underground facilities | |

Was a safety check-in conducted? Y Approximate Number of Construction Personnel On-site: 8

General Notes/Comments Delivery and installation of substation structural steel, and delivery and installation of transformer containment basin grates.

General Issues

Monitor: Andrew Steyers

- | | |
|--|-----|
| A. Workplace limits verified and properly marked? | Yes |
| B. All activities within approved workspace limits? | Yes |
| C. Only approved access roads utilized for ingress and egress? | Yes |
| D. Access road signs in place? | Yes |
| E. Trash and debris contained and disposed of in proper manner? | Yes |
| F. All crew on site displaying hard-hat decals from WEAP training? | Yes |
| G. Speed limit observed by all project personnel? | Yes |
| H. Was construction noise limited to maximum allowed levels (mufflers being used, construction occurring only within allowed hours, vehicle idling minimized etc.) | Yes |
| I. Was existing vehicle and trail access maintained? | Yes |
| J. Did any health and safety incidents occur? | No |
| K. Were there any public complaints? | No |
| L. Was the project shut down for any reason today? | No |
| M. Were there any other incidents to report? | No |
-

Environmental Resources

Monitor: Andrew Steyers

Compliance Level: In Compliance

- | | |
|---|-----|
| A. Were all active work areas and access roads clearly marked with staking or flagging? | Yes |
| B. Did all vehicles and personnel stay in approved work areas? | Yes |
| C. Was fire suppression equipment within 50 feet of each active work area? | Yes |
| D. Were all construction activities completed between 7:00 a.m. and 7:00 p.m.? | Yes |

Salt Creek Daily Inspection

Monitor Date: 4/18/2017

Biological Resources

Monitor: Andrew Steyers

Compliance Level: In Compliance

- A. Were all work activities conducted outside of any established nesting bird buffer, active nests and/or burrows? **Yes**
- B. Were all equipment/vehicles that arrived on site clean and free of vegetative debris/soil? **Yes**
- C. Were any special-status species observed? **No**
- D. Did work activities occur in or adjacent to known locations of Special status plants? **Yes**
Special status plants are known to occur in locations adjacent to the Project boundaries. All work performed today occurred within the Project boundaries, outside of known locations of Special status plants.
- E. Did any construction activity occur within an ESA? **No**
- F. Was the work area surveyed for sensitive species immediately prior to ground-disturbing or vegetation removal activities? **Yes**
- G. Are all open excavations/trenches inspected for entrapped wildlife at least twice daily? **Yes**
- H. Are all large/steep excavations/trenches covered and/or fenced nightly? **Yes**
- I. Are excavations covered or equipped with earthen wildlife escape ramps by the end of the day? **Yes**
-

Cultural Resources

No Cultural Data Collected

Paleontological Resources

No Paleontological Data Collected

Dust Control

Monitor: Andrew Steyers

Compliance Level: In Compliance

- A. Are materials carried off site covered or watered prior to leaving site? **Yes**
- B. Are exposed stockpiles of dirt covered or watered to control fugitive dust? **Yes**
- C. Is all soil material tracked onto paved public roads swept daily? **Yes**
- D. Are all work areas and access roads watered daily if there is persistent fugitive dust is visible beyond the work area boundaries? **Yes**
- E. Are all loads covered or have a minimum of two feet of freeboard? **Yes**
- F. If sustained winds of 20 mph or greater are experienced, were soil disturbing activities terminated? **N/A**
- G. Are rock aprons or rattle/shaker plates installed at the intersections of dirt access routes and paved public roadways? **No**

With the opening of the main gate and "Road A" to traffic, the corridor road gate will no longer be used by the Project and the rattle plates there have been removed.

Salt Creek Daily Inspection

Monitor Date: 4/18/2017

Erosion and Sediment

Monitor: Andrew Steyers

Compliance Level: In Compliance

- A. Are there sufficient quantities of erosion control materials stockpiled at the construction site? **Yes**
 - B. Are all locations of temporary stockpiles in approved areas and appropriately protected? **Yes**
 - C. Were any rolled erosion control products used? **Yes**
Straw wattle were used as erosion control.
 - D. Were rolled erosion products comprised of entirely natural fiber biodegradable materials? **Yes**
-

Hazardous Substances

Monitor: Andrew Steyers

Compliance Level: In Compliance

- A. Is fueling conducted in appropriate areas with appropriate containment and spill materials? **Yes**
 - B. Are vehicles and equipment checked for leaks? **Yes**
 - C. Were any leaks observed? **No**
 - D. Are spills cleaned up and disposed of properly? **Yes**
 - E. Are clean-up materials available on site in case of a spill? **Yes**
 - F. Was discolored or odiferous soil or groundwater encountered during excavation activities? **No**
-

Waste

Monitor: Andrew Steyers

Compliance Level: In Compliance

- A. Is project-generated litter removed from the construction site daily? **Yes**
- B. Are waste management receptacle levels appropriately maintained? **Yes**

Salt Creek Daily Inspection

Monitor Date: 4/19/2017

Weather Observations

Start Temperature: 62°F Midday Temperature: 67°F End Temperature: 64°F
Weather Conditions: Sunny
Precipitation: None
Cloud Cover: 5

Construction Details

Construction Start Time: 7:00 AM Construction End Time: 3:00 PM

Construction Activities

- | | |
|---|---|
| <input checked="" type="checkbox"/> Mobilize materials equipment or prepared work areas | <input checked="" type="checkbox"/> Installed aboveground facilities |
| <input type="checkbox"/> Cleared or trimmed vegetation | <input type="checkbox"/> Installed landscaping |
| <input type="checkbox"/> Conduct earthwork | <input type="checkbox"/> Demobilized materials equipment or cleaned up work areas |
| <input type="checkbox"/> Developed site drainage facilities | |
| <input type="checkbox"/> Developed site surfaces | |
| <input type="checkbox"/> Installed underground facilities | |

Was a safety check-in conducted? Y Approximate Number of Construction Personnel On-site: 8

General Notes/Comments Transformer containment-basin grating installation, and delivery and installation of substation structural steel.

General Issues

Monitor: Andrew Steyers

- | | |
|--|-----|
| A. Workplace limits verified and properly marked? | Yes |
| B. All activities within approved workspace limits? | Yes |
| C. Only approved access roads utilized for ingress and egress? | Yes |
| D. Access road signs in place? | Yes |
| E. Trash and debris contained and disposed of in proper manner? | Yes |
| F. All crew on site displaying hard-hat decals from WEAP training? | Yes |
| G. Speed limit observed by all project personnel? | Yes |
| H. Was construction noise limited to maximum allowed levels (mufflers being used, construction occurring only within allowed hours, vehicle idling minimized etc.) | Yes |
| I. Was existing vehicle and trail access maintained? | Yes |
| J. Did any health and safety incidents occur? | No |
| K. Were there any public complaints? | No |
| L. Was the project shut down for any reason today? | No |
| M. Were there any other incidents to report? | No |
-

Environmental Resources

Monitor: Andrew Steyers

Compliance Level: In Compliance

- | | |
|---|-----|
| A. Were all active work areas and access roads clearly marked with staking or flagging? | Yes |
| B. Did all vehicles and personnel stay in approved work areas? | Yes |
| C. Was fire suppression equipment within 50 feet of each active work area? | Yes |
| D. Were all construction activities completed between 7:00 a.m. and 7:00 p.m.? | Yes |

Salt Creek Daily Inspection

Monitor Date: 4/19/2017

Biological Resources

Monitor: Andrew Steyers

Compliance Level: In Compliance

- | | |
|---|-----|
| A. Were all work activities conducted outside of any established nesting bird buffer, active nests and/or burrows? | Yes |
| B. Were all equipment/vehicles that arrived on site clean and free of vegetative debris/soil? | Yes |
| C. Were any special-status species observed? | No |
| D. Did work activities occur in or adjacent to known locations of Special status plants?
Special status plants are known to occur in locations adjacent to the Project boundaries. All work performed today occurred within the Project boundaries, outside of known locations of Special status plants. | Yes |
| E. Did any construction activity occur within an ESA? | No |
| F. Was the work area surveyed for sensitive species immediately prior to ground-disturbing or vegetation removal activities? | Yes |
| G. Are all open excavations/trenches inspected for entrapped wildlife at least twice daily? | Yes |
| H. Are all large/steep excavations/trenches covered and/or fenced nightly? | Yes |
| I. Are excavations covered or equipped with earthen wildlife escape ramps by the end of the day? | Yes |
-

Cultural Resources

No Cultural Data Collected

Paleontological Resources

No Paleontological Data Collected

Dust Control

Monitor: Andrew Steyers

Compliance Level: In Compliance

- | | |
|---|-----|
| A. Are materials carried off site covered or watered prior to leaving site? | Yes |
| B. Are exposed stockpiles of dirt covered or watered to control fugitive dust? | Yes |
| C. Is all soil material tracked onto paved public roads swept daily? | Yes |
| D. Are all work areas and access roads watered daily if there is persistent fugitive dust is visible beyond the work area boundaries? | Yes |
| E. Are all loads covered or have a minimum of two feet of freeboard? | Yes |
| F. If sustained winds of 20 mph or greater are experienced, were soil disturbing activities terminated? | N/A |
| G. Are rock aprons or rattle/shaker plates installed at the intersections of dirt access routes and paved public roadways? | No |

With the opening of the main gate and "Road A" to traffic, the corridor road gate will no longer be used by the Project and the rattle plates there have been removed.

Salt Creek Daily Inspection

Monitor Date: 4/19/2017

Erosion and Sediment

Monitor: Andrew Steyers

Compliance Level: In Compliance

- A. Are there sufficient quantities of erosion control materials stockpiled at the construction site? **Yes**
 - B. Are all locations of temporary stockpiles in approved areas and appropriately protected? **Yes**
 - C. Were any rolled erosion control products used? **Yes**
Straw wattle was used for erosion control.
 - D. Were rolled erosion products comprised of entirely natural fiber biodegradable materials? **Yes**
-

Hazardous Substances

Monitor: Andrew Steyers

Compliance Level: In Compliance

- A. Is fueling conducted in appropriate areas with appropriate containment and spill materials? **Yes**
 - B. Are vehicles and equipment checked for leaks? **Yes**
 - C. Were any leaks observed? **No**
 - D. Are spills cleaned up and disposed of properly? **Yes**
 - E. Are clean-up materials available on site in case of a spill? **Yes**
 - F. Was discolored or odiferous soil or groundwater encountered during excavation activities? **No**
-

Waste

Monitor: Andrew Steyers

Compliance Level: In Compliance

- A. Is project-generated litter removed from the construction site daily? **Yes**
- B. Are waste management receptacle levels appropriately maintained? **Yes**

Salt Creek Daily Inspection

Monitor Date: 4/20/2017

Weather Observations

Start Temperature: 63°F Midday Temperature: 69°F End Temperature: 68°F
Weather Conditions: Sunny
Precipitation: None
Cloud Cover: 20

Construction Details

Construction Start Time: 7:00 AM Construction End Time: 3:30 PM

Construction Activities

- | | |
|---|---|
| <input checked="" type="checkbox"/> Mobilize materials equipment or prepared work areas | <input checked="" type="checkbox"/> Installed aboveground facilities |
| <input type="checkbox"/> Cleared or trimmed vegetation | <input type="checkbox"/> Installed landscaping |
| <input type="checkbox"/> Conduct earthwork | <input type="checkbox"/> Demobilized materials equipment or cleaned up work areas |
| <input type="checkbox"/> Developed site drainage facilities | |
| <input checked="" type="checkbox"/> Developed site surfaces | |
| <input type="checkbox"/> Installed underground facilities | |

Was a safety check-in conducted? Y Approximate Number of Construction Personnel On-site: 7

General Notes/Comments Liberty installed grates around the perimeter of one of the large transformers and SDG&E worked in the substation yard.

General Issues

Monitor: James McMorran

- | | |
|--|-----|
| A. Workplace limits verified and properly marked? | Yes |
| B. All activities within approved workspace limits? | Yes |
| C. Only approved access roads utilized for ingress and egress? | Yes |
| D. Access road signs in place? | Yes |
| E. Trash and debris contained and disposed of in proper manner? | Yes |
| F. All crew on site displaying hard-hat decals from WEAP training? | Yes |
| G. Speed limit observed by all project personnel? | Yes |
| H. Was construction noise limited to maximum allowed levels (mufflers being used, construction occurring only within allowed hours, vehicle idling minimized etc.) | Yes |
| I. Was existing vehicle and trail access maintained? | Yes |
| J. Did any health and safety incidents occur? | No |
| K. Were there any public complaints? | No |
| L. Was the project shut down for any reason today? | No |
| M. Were there any other incidents to report? | No |
-

Environmental Resources

Monitor: James McMorran

Compliance Level: In Compliance

- | | |
|---|-----|
| A. Were all active work areas and access roads clearly marked with staking or flagging? | Yes |
| B. Did all vehicles and personnel stay in approved work areas? | Yes |
| C. Was fire suppression equipment within 50 feet of each active work area? | Yes |
| D. Were all construction activities completed between 7:00 a.m. and 7:00 p.m.? | Yes |

Salt Creek Daily Inspection

Monitor Date: 4/20/2017

Biological Resources

Monitor: James McMorran

Compliance Level: In Compliance

- A. Were all work activities conducted outside of any established nesting bird buffer, active nests and/or burrows? **Yes**
- B. Were all equipment/vehicles that arrived on site clean and free of vegetative debris/soil? **Yes**
- C. Were any special-status species observed? **No**
- D. Did work activities occur in or adjacent to known locations of Special status plants? **Yes**
Special status plants are known to occur in locations adjacent to the Project boundaries. All work performed today occurred within the Project boundaries, outside of known locations of Special status plants.
- E. Did any construction activity occur within an ESA? **No**
- F. Was the work area surveyed for sensitive species immediately prior to ground-disturbing or vegetation removal activities? **Yes**
- G. Are all open excavations/trenches inspected for entrapped wildlife at least twice daily? **Yes**
- H. Are all large/steep excavations/trenches covered and/or fenced nightly? **Yes**
- I. Are excavations covered or equipped with earthen wildlife escape ramps by the end of the day? **Yes**
-

Cultural Resources

No Cultural Data Collected

Paleontological Resources

No Paleontological Data Collected

Dust Control

Monitor: James McMorran

Compliance Level: In Compliance

- A. Are materials carried off site covered or watered prior to leaving site? **Yes**
- B. Are exposed stockpiles of dirt covered or watered to control fugitive dust? **Yes**
- C. Is all soil material tracked onto paved public roads swept daily? **No**
Access road to site is paved.
- D. Are all work areas and access roads watered daily if there is persistent fugitive dust is visible beyond the work area boundaries? **Yes**
- E. Are all loads covered or have a minimum of two feet of freeboard? **No**
No loads of any material entered or exited the project site.
- F. If sustained winds of 20 mph or greater are experienced, were soil disturbing activities terminated? **Yes**
- G. Are rock aprons or rattle/shaker plates installed at the intersections of dirt access routes and paved public roadways? **No**
With the opening of the main gate and "Road A" to traffic, the corridor road gate will no longer be used by the Project and the rattle plates there have been removed.
-

Salt Creek Daily Inspection

Monitor Date: 4/20/2017

Erosion and Sediment

Monitor: James McMorran

Compliance Level: In Compliance

- A. Are there sufficient quantities of erosion control materials stockpiled at the construction site? **Yes**
 - B. Are all locations of temporary stockpiles in approved areas and appropriately protected? **Yes**
 - C. Were any rolled erosion control products used? **Yes**
Straw wattle was used for erosion control.
 - D. Were rolled erosion products comprised of entirely natural fiber biodegradable materials? **Yes**
-

Hazardous Substances

Monitor: James McMorran

Compliance Level: In Compliance

- A. Is fueling conducted in appropriate areas with appropriate containment and spill materials? **Yes**
 - B. Are vehicles and equipment checked for leaks? **Yes**
 - C. Were any leaks observed? **No**
 - D. Are spills cleaned up and disposed of properly? **Yes**
 - E. Are clean-up materials available on site in case of a spill? **Yes**
 - F. Was discolored or odiferous soil or groundwater encountered during excavation activities? **No**
-

Waste

Monitor: James McMorran

Compliance Level: In Compliance

- A. Is project-generated litter removed from the construction site daily? **Yes**
- B. Are waste management receptacle levels appropriately maintained? **Yes**

Salt Creek Daily Inspection

Monitor Date: 4/21/2017

Weather Observations

Start Temperature: 64°F Midday Temperature: 80°F End Temperature: 80°F
Weather Conditions: Sunny
Precipitation: None
Cloud Cover: 0

Construction Details

Construction Start Time: 7:00 AM Construction End Time: 3:15 PM

Construction Activities

- | | |
|---|---|
| <input checked="" type="checkbox"/> Mobilize materials equipment or prepared work areas | <input checked="" type="checkbox"/> Installed aboveground facilities |
| <input type="checkbox"/> Cleared or trimmed vegetation | <input type="checkbox"/> Installed landscaping |
| <input type="checkbox"/> Conduct earthwork | <input type="checkbox"/> Demobilized materials equipment or cleaned up work areas |
| <input type="checkbox"/> Developed site drainage facilities | |
| <input type="checkbox"/> Developed site surfaces | |
| <input type="checkbox"/> Installed underground facilities | |

Was a safety check-in conducted? Y Approximate Number of Construction Personnel On-site: 9

General Notes/Comments SDG&E constructing substation.

General Issues

Monitor: James McMorran

- | | |
|--|-----|
| A. Workplace limits verified and properly marked? | Yes |
| B. All activities within approved workspace limits? | Yes |
| C. Only approved access roads utilized for ingress and egress? | Yes |
| D. Access road signs in place? | Yes |
| E. Trash and debris contained and disposed of in proper manner? | Yes |
| F. All crew on site displaying hard-hat decals from WEAP training? | Yes |
| G. Speed limit observed by all project personnel? | Yes |
| H. Was construction noise limited to maximum allowed levels (mufflers being used, construction occurring only within allowed hours, vehicle idling minimized etc.) | Yes |
| I. Was existing vehicle and trail access maintained? | Yes |
| J. Did any health and safety incidents occur? | No |
| K. Were there any public complaints? | No |
| L. Was the project shut down for any reason today? | No |
| M. Were there any other incidents to report? | No |
-

Environmental Resources

Monitor: James McMorran

Compliance Level: In Compliance

- | | |
|---|-----|
| A. Were all active work areas and access roads clearly marked with staking or flagging? | Yes |
| B. Did all vehicles and personnel stay in approved work areas? | Yes |
| C. Was fire suppression equipment within 50 feet of each active work area? | Yes |
| D. Were all construction activities completed between 7:00 a.m. and 7:00 p.m.? | Yes |
-

Salt Creek Daily Inspection

Monitor Date: 4/21/2017

Biological Resources

Monitor: James McMorran

Compliance Level: In Compliance

- A. Were all work activities conducted outside of any established nesting bird buffer, active nests and/or burrows? **Yes**
- B. Were all equipment/vehicles that arrived on site clean and free of vegetative debris/soil? **Yes**
- C. Were any special-status species observed? **No**
- D. Did work activities occur in or adjacent to known locations of Special status plants? **Yes**
Special status plants are known to occur in locations adjacent to the Project boundaries. All work performed today occurred within the Project boundaries, outside of known locations of Special status plants.
- E. Did any construction activity occur within an ESA? **No**
- F. Was the work area surveyed for sensitive species immediately prior to ground-disturbing or vegetation removal activities? **Yes**
- G. Are all open excavations/trenches inspected for entrapped wildlife at least twice daily? **Yes**
- H. Are all large/steep excavations/trenches covered and/or fenced nightly? **Yes**
- I. Are excavations covered or equipped with earthen wildlife escape ramps by the end of the day? **Yes**
-

Cultural Resources

No Cultural Data Collected

Paleontological Resources

No Paleontological Data Collected

Dust Control

Monitor: James McMorran

Compliance Level: In Compliance

- A. Are materials carried off site covered or watered prior to leaving site? **Yes**
- B. Are exposed stockpiles of dirt covered or watered to control fugitive dust? **Yes**
No stockpiles were present.
- C. Is all soil material tracked onto paved public roads swept daily? **No**
Access road to site is paved.
- D. Are all work areas and access roads watered daily if there is persistent fugitive dust is visible beyond the work area boundaries? **Yes**
Access roads are paved and very little dust is generated from substation.
- E. Are all loads covered or have a minimum of two feet of freeboard? **No**
No loads of any material entered or exited the project site.
- F. If sustained winds of 20 mph or greater are experienced, were soil disturbing activities terminated? **N/A**
- G. Are rock aprons or rattle/shaker plates installed at the intersections of dirt access routes and paved public roadways? **No**
With the opening of the main gate and "Road A" to traffic, the corridor road gate will no longer be used by the Project and the rattle plates there have been removed.

Salt Creek Daily Inspection

Monitor Date: 4/21/2017

Erosion and Sediment

Monitor: James McMorran

Compliance Level: In Compliance

- | | |
|--|-----|
| A. Are there sufficient quantities of erosion control materials stockpiled at the construction site? | Yes |
| B. Are all locations of temporary stockpiles in approved areas and appropriately protected? | Yes |
| C. Were any rolled erosion control products used?
Straw wattle was used for erosion control. | Yes |
| D. Were rolled erosion products comprised of entirely natural fiber biodegradable materials? | Yes |
-

Hazardous Substances

Monitor: James McMorran

Compliance Level: In Compliance

- | | |
|--|-----|
| A. Is fueling conducted in appropriate areas with appropriate containment and spill materials? | Yes |
| B. Are vehicles and equipment checked for leaks? | Yes |
| C. Were any leaks observed? | No |
| D. Are spills cleaned up and disposed of properly? | Yes |
| E. Are clean-up materials available on site in case of a spill? | Yes |
| F. Was discolored or odiferous soil or groundwater encountered during excavation activities? | No |
-

Waste

Monitor: James McMorran

Compliance Level: In Compliance

- | | |
|--|-----|
| A. Is project-generated litter removed from the construction site daily? | Yes |
| B. Are waste management receptacle levels appropriately maintained? | Yes |

ATTACHMENT C: MMCRP CHECKLIST

SALT CREEK SUBSTATION PROJECT

Weekly MMCRP Checklist

Completed by: Andrew Steyers
 Organization: Blackhawk Environmental
 Position: LEI

Day of the Week	Mon	Tue	Wed	Thu	Fri	Sat	Sun
Date (mm/dd/yy)	4/24/17	4/25/17	4/26/17	4/27/17	4/28/17	4/29/17	
A. Daily Work Hours and Workforce							
Start Time (hh:mm am/pm)			7:00 am		7:00 am		
Stop Time			5:30 pm		2:00 pm		
Construction Personnel Onsite			21		14		
Compliance Personnel Onsite			2		1		
Total Personnel Onsite	0	0	23	0	15	0	0
B. Daily Construction Activities – Check only if applicable							
1. Mobilized materials/equipment or prepared work areas	<input type="checkbox"/>	<input type="checkbox"/>	<input checked="" type="checkbox"/>	<input type="checkbox"/>	<input checked="" type="checkbox"/>	<input type="checkbox"/>	<input type="checkbox"/>
2. Cleared or trimmed vegetation	<input type="checkbox"/>	<input type="checkbox"/>	<input type="checkbox"/>	<input type="checkbox"/>	<input type="checkbox"/>	<input type="checkbox"/>	<input type="checkbox"/>
3. Conducted earthwork (grading, trenching, or other ground disturbance)	<input type="checkbox"/>	<input type="checkbox"/>	<input type="checkbox"/>	<input type="checkbox"/>	<input type="checkbox"/>	<input type="checkbox"/>	<input type="checkbox"/>
4. Developed site surfaces (substation pad or access roads)	<input type="checkbox"/>	<input type="checkbox"/>	<input type="checkbox"/>	<input type="checkbox"/>	<input type="checkbox"/>	<input type="checkbox"/>	<input type="checkbox"/>
5. Developed site drainage facilities	<input type="checkbox"/>	<input type="checkbox"/>	<input type="checkbox"/>	<input type="checkbox"/>	<input type="checkbox"/>	<input type="checkbox"/>	<input type="checkbox"/>
6. Installed underground facilities	<input type="checkbox"/>	<input type="checkbox"/>	<input type="checkbox"/>	<input type="checkbox"/>	<input type="checkbox"/>	<input type="checkbox"/>	<input type="checkbox"/>
7. Installed aboveground facilities	<input type="checkbox"/>	<input type="checkbox"/>	<input checked="" type="checkbox"/>	<input type="checkbox"/>	<input checked="" type="checkbox"/>	<input type="checkbox"/>	<input type="checkbox"/>
8. Installed landscaping	<input type="checkbox"/>	<input type="checkbox"/>	<input type="checkbox"/>	<input type="checkbox"/>	<input type="checkbox"/>	<input type="checkbox"/>	<input type="checkbox"/>
9. Demobilized materials/equipment or cleaned up work areas	<input type="checkbox"/>	<input type="checkbox"/>	<input type="checkbox"/>	<input type="checkbox"/>	<input type="checkbox"/>	<input type="checkbox"/>	<input type="checkbox"/>
10. Other	<input type="checkbox"/>	<input type="checkbox"/>	<input type="checkbox"/>	<input type="checkbox"/>	<input type="checkbox"/>	<input type="checkbox"/>	<input type="checkbox"/>
C. Daily Compliance Activities – Check only if applicable and implemented adequately without incident							
Avoidance and Minimization, and General Monitoring							
1. Limited activities to approved work areas and access roads (APM BIO-2 and MM Biology-1a)	<input type="checkbox"/>	<input type="checkbox"/>	<input checked="" type="checkbox"/>	<input type="checkbox"/>	<input checked="" type="checkbox"/>	<input type="checkbox"/>	<input type="checkbox"/>
2. Limited dust generation and emissions to required thresholds (APM AIR-1, APM AIR-2, MM Air-1, MM Biology-1a, and MM GHG-1)	<input type="checkbox"/>	<input type="checkbox"/>	<input checked="" type="checkbox"/>	<input type="checkbox"/>	<input checked="" type="checkbox"/>	<input type="checkbox"/>	<input type="checkbox"/>
3. Avoided sensitive plant habitat (APM BIO-2, MM Biology-1a, MM Biology-2, and MM Biology-9)	<input type="checkbox"/>	<input type="checkbox"/>	<input checked="" type="checkbox"/>	<input type="checkbox"/>	<input checked="" type="checkbox"/>	<input type="checkbox"/>	<input type="checkbox"/>
4. Avoided sensitive wildlife habitat (APM BIO-3, MM Biology-1a, MM Biology-7, and MM Biology-8)	<input type="checkbox"/>	<input type="checkbox"/>	<input checked="" type="checkbox"/>	<input type="checkbox"/>	<input checked="" type="checkbox"/>	<input type="checkbox"/>	<input type="checkbox"/>
5. Avoided active bird nests or burrows (APM BIO-1, APM BIO-2, MM Biology-1a, and MM Biology-6)	<input type="checkbox"/>	<input type="checkbox"/>	<input checked="" type="checkbox"/>	<input type="checkbox"/>	<input checked="" type="checkbox"/>	<input type="checkbox"/>	<input type="checkbox"/>
6. Avoided sensitive water features and aquatic habitat (APM HAZ-1, MM Biology-1a, and APM HYDRO-2)	<input type="checkbox"/>	<input type="checkbox"/>	<input checked="" type="checkbox"/>	<input type="checkbox"/>	<input checked="" type="checkbox"/>	<input type="checkbox"/>	<input type="checkbox"/>
7. Installed/maintained erosion or sediment controls (APM BIO-2, APM BIO-4, MM Biology-1a, MM Geology-1, APM HYDRO-1, and MM Hydro-2)	<input type="checkbox"/>	<input type="checkbox"/>	<input checked="" type="checkbox"/>	<input type="checkbox"/>	<input checked="" type="checkbox"/>	<input type="checkbox"/>	<input type="checkbox"/>
8. Implemented invasive weed measures (MM Biology-3)	<input type="checkbox"/>	<input type="checkbox"/>	<input checked="" type="checkbox"/>	<input type="checkbox"/>	<input checked="" type="checkbox"/>	<input type="checkbox"/>	<input type="checkbox"/>

Weekly MMCRP Checklist

Day of the Week	Mon	Tue	Wed	Thu	Fri	Sat	Sun
Dates	4/24/17	4/25/17	4/26/17	4/27/17	4/28/17	4/29/17	
9. Managed hazardous materials and waste (APM BIO-2, MM Biology-1a, APM HAZ-1, and APM HAZ-2)	<input type="checkbox"/>	<input type="checkbox"/>	<input checked="" type="checkbox"/>	<input type="checkbox"/>	<input checked="" type="checkbox"/>	<input type="checkbox"/>	<input type="checkbox"/>
10. Implemented fire prevention measures (MM Biology-1a, APM HAZ-3, and MM Hazards-2)	<input type="checkbox"/>	<input type="checkbox"/>	<input checked="" type="checkbox"/>	<input type="checkbox"/>	<input checked="" type="checkbox"/>	<input type="checkbox"/>	<input type="checkbox"/>
11. Avoided known cultural, paleontological, and tribal resources (APM CUL-2, APM CUL-7, MM Cultural Resources-1, MM Cultural Resources-2, MM Cultural Resources-3, MM Cultural Resources-4, and MM Cultural Paleontology-1)	<input type="checkbox"/>	<input type="checkbox"/>	<input checked="" type="checkbox"/>	<input type="checkbox"/>	<input checked="" type="checkbox"/>	<input type="checkbox"/>	<input type="checkbox"/>
12. Limited construction noise to maximum levels (APM NOISE-1, APM NOISE-3, MM Noise-1, and MM Noise-2)	<input type="checkbox"/>	<input type="checkbox"/>	<input checked="" type="checkbox"/>	<input type="checkbox"/>	<input checked="" type="checkbox"/>	<input type="checkbox"/>	<input type="checkbox"/>
13. Maintain existing vehicle and trail access (APM REC-1, MM Recreation-2, APM TRANS-1, and MM Traffic-3)	<input type="checkbox"/>	<input type="checkbox"/>	<input checked="" type="checkbox"/>	<input type="checkbox"/>	<input checked="" type="checkbox"/>	<input type="checkbox"/>	<input type="checkbox"/>
14. Provided workers with required environmental trainings (APM BIO-1, APM BIO-2, MM Biology-1a, APM CUL-1, APM GHG-1, APM HAZ-1, APM HAZ-3, and APM HYDRO-1)	<input type="checkbox"/>	<input type="checkbox"/>	<input checked="" type="checkbox"/>	<input type="checkbox"/>	<input checked="" type="checkbox"/>	<input type="checkbox"/>	<input type="checkbox"/>
15. Implemented MMCRP procedures	<input type="checkbox"/>	<input type="checkbox"/>	<input checked="" type="checkbox"/>	<input type="checkbox"/>	<input checked="" type="checkbox"/>	<input type="checkbox"/>	<input type="checkbox"/>
SDG&E Specialty Monitoring							
16. Special-status wildlife (APM BIO-2, MM Biology-1a, MM Biology-7, and MM Biology-8)	<input type="checkbox"/>	<input type="checkbox"/>	<input checked="" type="checkbox"/>	<input type="checkbox"/>	<input checked="" type="checkbox"/>	<input type="checkbox"/>	<input type="checkbox"/>
17. Nesting birds/burrowing owls (APM BIO-1 and MM Biology-6)	<input type="checkbox"/>	<input type="checkbox"/>	<input checked="" type="checkbox"/>	<input type="checkbox"/>	<input checked="" type="checkbox"/>	<input type="checkbox"/>	<input type="checkbox"/>
18. Special-status plants (APM BIO-2, MM Biology-1a, MM Biology-3, and MM Biology-1b)	<input type="checkbox"/>	<input type="checkbox"/>	<input checked="" type="checkbox"/>	<input type="checkbox"/>	<input checked="" type="checkbox"/>	<input type="checkbox"/>	<input type="checkbox"/>
19. Aquatic/hydrologic resources (APM HYDRO-1 and MM Geology-1)	<input type="checkbox"/>	<input type="checkbox"/>	<input checked="" type="checkbox"/>	<input type="checkbox"/>	<input checked="" type="checkbox"/>	<input type="checkbox"/>	<input type="checkbox"/>
20. SWPPP/reclamation (APM HYDRO-1, MM Geology-1, and MM Biology-11)	<input type="checkbox"/>	<input type="checkbox"/>	<input checked="" type="checkbox"/>	<input type="checkbox"/>	<input checked="" type="checkbox"/>	<input type="checkbox"/>	<input type="checkbox"/>
21. Cultural resources (APM CUL-2, MM Cultural Resources-1, MM Cultural Resources-2, and MM Cultural Resources-3)	<input type="checkbox"/>	<input type="checkbox"/>	<input checked="" type="checkbox"/>	<input type="checkbox"/>	<input checked="" type="checkbox"/>	<input type="checkbox"/>	<input type="checkbox"/>
22. Paleontological resources (APM CUL-5, APM CUL-6, and MM Paleontology 1)	<input type="checkbox"/>	<input type="checkbox"/>	<input checked="" type="checkbox"/>	<input type="checkbox"/>	<input checked="" type="checkbox"/>	<input type="checkbox"/>	<input type="checkbox"/>
23. Tribal resources (MM Cultural Resources-4)	<input type="checkbox"/>	<input type="checkbox"/>	<input checked="" type="checkbox"/>	<input type="checkbox"/>	<input checked="" type="checkbox"/>	<input type="checkbox"/>	<input type="checkbox"/>
24. Fire management (APM HAZ-3)	<input type="checkbox"/>	<input type="checkbox"/>	<input checked="" type="checkbox"/>	<input type="checkbox"/>	<input checked="" type="checkbox"/>	<input type="checkbox"/>	<input type="checkbox"/>
D. SDG&E Record of Weekly Incidents							
Compliance Level 1: Occurrences	0	0	0	0	0	0	
Compliance Level 2: Minor Problems	0	0	0	0	0	0	
Compliance Level 3: Compliance Issues	0	0	0	0	0	0	
Compliance Level 4: Noncompliances	0	0	0	0	0	0	
Total Compliance Level Incidents	0	0	0	0	0	0	0
Health and Safety Incidents	0	0	0	0	0	0	
Public Complaints	0	0	0	0	0	0	
Total Incidents	0	0	0	0	0	0	0



Salt Creek Substation Project
WEEKLY ENVIRONMENTAL COMPLIANCE REPORT
April 24 – April 29, 2017

INTRODUCTION

This report provides an overview of construction progress and applicant-proposed measure (APM) and mitigation measure (MM) implementation during construction of the San Diego Gas & Electric Company (SDG&E) Salt Creek Substation Project (Project) during the week ending on April 29, 2017. Work on the Project was conducted by SDG&E, Suffolk, Icon, and their construction subcontractors.

CONSTRUCTION OVERVIEW

On June 21, 2016, the California Public Utilities Commission (CPUC) issued a Notice to Proceed for construction of the Project. Construction of the Salt Creek Substation kicked off on July 18, 2016. During this reporting period, construction activities occurred April 24– April 29, and are listed in the following section by Project component. Due to reduced construction activity, monitoring levels have been reduced to Mondays, Wednesdays, and Fridays. A Lead Environmental Inspector (LEI) was on-site April 24, April 26, and April 28. On April 24, scheduled crews did not arrive onsite and no work was performed.

CONSTRUCTION ACTIVITIES

Salt Creek Substation

Construction activities during this reporting period included: perimeter fence repair, manhole ladder-rung installation, substation structural steel installation, transformer containment-basin grating installation, transformer firewall installation, transformer delivery and installation. A scissor-lift and a JLG reach-lift were demobilized from the site.

WORKER ENVIRONMENTAL AWARENESS PROGRAM

Nine new project worker attended the required environmental training as part of the Project Worker Environmental Awareness Program (WEAP). To date, approximately 571 Project personnel have received the required environmental awareness education.

ENVIRONMENTAL COMPLIANCE SUMMARY

The following subsections provide an assessment of environmental resources and a summary of the APMs, MMs, and permit conditions that were implemented during the week ending on April 29, 2017.

Air Quality

A water buffalo was used to control dust as needed during construction activities. All pavement was kept clean during this reporting period. No winds exceeding 20-mph occurred during work hours.

Biological Resources

During this monitoring period, construction occurred within the project limits of disturbance, adjacent to, but not within, the special-status plant locations. No special-status species were observed during the monitoring period.

On Friday, April 28th, an American crow pair was observed building a stick nest 80-feet up in east corner of the transmission tower located adjacent to the east corner of the Project. The LEI (and Qualified Biologist) established a nest buffer, as required by Mitigation Measure BIO-6 at 150-feet, reaching just inside the back fence of the Project. The same pair was observed carrying sticks to several partially constructed nests in the next transmission tower to the northwest, which is located across Hunte Parkway outside of the Project buffer limits.

Cultural and Paleontological Resources

Cultural, Native American, and Paleontological monitors were on-call April 24 – April 29, but were not called to the site as no ground-disturbing construction activities occurred.

Hazardous Materials and Waste

All fueling was conducted in appropriate areas and all vehicles and equipment were checked for leaks. No leaks occurred during this reporting period.

Noise

All construction activities observed during this reporting period occurred between 7:00 a.m. and 7:00 p.m. on Wednesday and Friday.

Traffic and Transportation

The traffic control plan approved by the City of Chula Vista was implemented and general traffic measures were adhered to. The majority of project personnel are parking their personal vehicles in a designated personal vehicle parking area within the project.

Storm Water Compliance

During this reporting period, the project SWPPP and BMPs were implemented in accordance with the SDG&E Water Quality Construction BMP Manual.

The Qualified SWPPP Practitioner performed a weekly site inspection on April 26. There were no SWPPP deficiencies observed during this reporting period.

Non-Compliances

No non-compliances occurred during this reporting period.

ATTACHMENT A: PHOTOGRAPHS



**Salt Creek Substation Project
ENVIRONMENTAL COMPLIANCE STATUS REPORT
Attachment A: Photographs**



Photograph 1:

Delivery and installation of the transformer firewalls occurred the week of April 29, 2017.



Photograph 2:

Delivery and installation of a transformer occurred during the week of April 29, 2017.

ATTACHMENT B: DAILY LOGS

Salt Creek Daily Inspection

Monitor Date: 4/26/2017

Weather Observations

Start Temperature: 57°F Midday Temperature: 76°F End Temperature: 75°F
Weather Conditions: Sunny
Precipitation: None
Cloud Cover: 0

Construction Details

Construction Start Time: 7:00 AM Construction End Time: 5:30 PM
Construction Activities
 Mobilize materials equipment or prepared work areas Installed aboveground facilities
 Cleared or trimmed vegetation Installed landscaping
 Conduct earthwork Demobilized materials equipment or cleaned up work areas
 Developed site drainage facilities
 Developed site surfaces
 Installed underground facilities
Was a safety check-in conducted? Y Approximate Number of Construction Personnel On-site: 21
General Notes/Comments Transformer firewall installation and transformer delivery and installation.

General Issues

Monitor: Andrew Steyers

A. Workplace limits verified and properly marked? **Yes**

B. All activities within approved workspace limits? **Yes**

C. Only approved access roads utilized for ingress and egress? **Yes**

D. Access road signs in place? **Yes**

E. Trash and debris contained and disposed of in proper manner? **Yes**

F. All crew on site displaying hard-hat decals from WEAP training? **Yes**

G. Speed limit observed by all project personnel? **Yes**

H. Was construction noise limited to maximum allowed levels (mufflers being used, construction occurring only within allowed hours, vehicle idling minimized etc.) **Yes**

I. Was existing vehicle and trail access maintained? **Yes**

J. Did any health and safety incidents occur? **No**

K. Were there any public complaints? **No**

L. Was the project shut down for any reason today? **No**

M. Were there any other incidents to report? **No**

Environmental Resources

Monitor: Andrew Steyers

Compliance Level: In Compliance

A. Were all active work areas and access roads clearly marked with staking or flagging? **Yes**

B. Did all vehicles and personnel stay in approved work areas? **Yes**

C. Was fire suppression equipment within 50 feet of each active work area? **Yes**

D. Were all construction activities completed between 7:00 a.m. and 7:00 p.m.? **Yes**

Salt Creek Daily Inspection

Monitor Date: 4/26/2017

Biological Resources

Monitor: Andrew Steyers

Compliance Level: In Compliance

- A. Were all work activities conducted outside of any established nesting bird buffer, active nests and/or burrows? **Yes**
- B. Were all equipment/vehicles that arrived on site clean and free of vegetative debris/soil? **Yes**
- C. Were any special-status species observed? **No**
- D. Did work activities occur in or adjacent to known locations of Special status plants? **Yes**
Special status plants are known to occur in locations adjacent to the Project boundaries. All work performed today occurred within the Project boundaries, outside of known locations of Special status plants.
- E. Did any construction activity occur within an ESA? **No**
- F. Was the work area surveyed for sensitive species immediately prior to ground-disturbing or vegetation removal activities? **Yes**
- G. Are all open excavations/trenches inspected for entrapped wildlife at least twice daily? **Yes**
- H. Are all large/steep excavations/trenches covered and/or fenced nightly? **Yes**
- I. Are excavations covered or equipped with earthen wildlife escape ramps by the end of the day? **Yes**

J. General Notes/Comments

Bee swarms were observed under the construction trailer and inside a cable spool inside the substation.
A bee removal contractor is being scheduled to remove the bees.

Cultural Resources

No Cultural Data Collected

Paleontological Resources

No Paleontological Data Collected

Dust Control

Monitor: Andrew Steyers

Compliance Level: In Compliance

- A. Are materials carried off site covered or watered prior to leaving site? **Yes**
- B. Are exposed stockpiles of dirt covered or watered to control fugitive dust? **Yes**
- C. Is all soil material tracked onto paved public roads swept daily? **Yes**
- D. Are all work areas and access roads watered daily if there is persistent fugitive dust is visible beyond the work area boundaries? **Yes**
- E. Are all loads covered or have a minimum of two feet of freeboard? **Yes**
- F. If sustained winds of 20 mph or greater are experienced, were soil disturbing activities terminated? **N/A**
- G. Are rock aprons or rattle/shaker plates installed at the intersections of dirt access routes and paved public roadways? **No**

With the opening of the main gate and "Road A" to traffic, the corridor road gate will no longer be used by the Project and the rattle plates there have been removed.

Salt Creek Daily Inspection

Monitor Date: 4/26/2017

Erosion and Sediment

Monitor: Andrew Steyers

Compliance Level: In Compliance

- | | |
|--|-----|
| A. Are there sufficient quantities of erosion control materials stockpiled at the construction site? | Yes |
| B. Are all locations of temporary stockpiles in approved areas and appropriately protected? | Yes |
| C. Were any rolled erosion control products used?
Straw wattle were used for erosion control. | Yes |
| D. Were rolled erosion products comprised of entirely natural fiber biodegradable materials? | Yes |
-

Hazardous Substances

Monitor: Andrew Steyers

Compliance Level: In Compliance

- | | |
|--|-----|
| A. Is fueling conducted in appropriate areas with appropriate containment and spill materials? | Yes |
| B. Are vehicles and equipment checked for leaks? | Yes |
| C. Were any leaks observed? | No |
| D. Are spills cleaned up and disposed of properly? | Yes |
| E. Are clean-up materials available on site in case of a spill? | Yes |
| F. Was discolored or odiferous soil or groundwater encountered during excavation activities? | No |
-

Waste

Monitor: Andrew Steyers

Compliance Level: In Compliance

- | | |
|--|-----|
| A. Is project-generated litter removed from the construction site daily? | Yes |
| B. Are waste management receptacle levels appropriately maintained? | Yes |

Salt Creek Daily Inspection

Monitor Date: 4/28/2017

Weather Observations

Start Temperature: 58°F Midday Temperature: 76°F End Temperature: 76°F
Weather Conditions: Sunny
Precipitation: None
Cloud Cover: 0

Construction Details

Construction Start Time: 7:00 AM Construction End Time: 2:00 PM

Construction Activities

- | | |
|---|---|
| <input checked="" type="checkbox"/> Mobilize materials equipment or prepared work areas | <input checked="" type="checkbox"/> Installed aboveground facilities |
| <input type="checkbox"/> Cleared or trimmed vegetation | <input type="checkbox"/> Installed landscaping |
| <input type="checkbox"/> Conduct earthwork | <input type="checkbox"/> Demobilized materials equipment or cleaned up work areas |
| <input type="checkbox"/> Developed site drainage facilities | |
| <input type="checkbox"/> Developed site surfaces | |
| <input type="checkbox"/> Installed underground facilities | |

Was a safety check-in conducted? Y Approximate Number of Construction Personnel On-site: 14

General Notes/Comments Perimeter fence repair, manhole ladder-rung installation, structural steel installation in substation, and transformer containment basin grating installation.

General Issues

Monitor: Andrew Steyers

- | | |
|--|-----|
| A. Workplace limits verified and properly marked? | Yes |
| B. All activities within approved workspace limits? | Yes |
| C. Only approved access roads utilized for ingress and egress? | Yes |
| D. Access road signs in place? | Yes |
| E. Trash and debris contained and disposed of in proper manner? | Yes |
| F. All crew on site displaying hard-hat decals from WEAP training? | Yes |
| G. Speed limit observed by all project personnel? | Yes |
| H. Was construction noise limited to maximum allowed levels (mufflers being used, construction occurring only within allowed hours, vehicle idling minimized etc.) | Yes |
| I. Was existing vehicle and trail access maintained? | Yes |
| J. Did any health and safety incidents occur? | No |
| K. Were there any public complaints? | No |
| L. Was the project shut down for any reason today? | No |
| M. Were there any other incidents to report? | No |
-

Environmental Resources

Monitor: Andrew Steyers

Compliance Level: In Compliance

- | | |
|---|-----|
| A. Were all active work areas and access roads clearly marked with staking or flagging? | Yes |
| B. Did all vehicles and personnel stay in approved work areas? | Yes |
| C. Was fire suppression equipment within 50 feet of each active work area? | Yes |
| D. Were all construction activities completed between 7:00 a.m. and 7:00 p.m.? | Yes |

Salt Creek Daily Inspection

Monitor Date: 4/28/2017

Biological Resources

Monitor: Andrew Steyers

Compliance Level: In Compliance

- A. Were all work activities conducted outside of any established nesting bird buffer, active nests and/or burrows? **Yes**
- B. Were all equipment/vehicles that arrived on site clean and free of vegetative debris/soil? **Yes**
- C. Were any special-status species observed? **No**
- D. Did work activities occur in or adjacent to known locations of Special status plants? **Yes**
Special status plants are known to occur in locations adjacent to the Project boundaries. All work performed today occurred within the Project boundaries, outside of known locations of Special status plants.
- E. Did any construction activity occur within an ESA? **No**
- F. Was the work area surveyed for sensitive species immediately prior to ground-disturbing or vegetation removal activities? **Yes**
- G. Are all open excavations/trenches inspected for entrapped wildlife at least twice daily? **Yes**
- H. Are all large/steep excavations/trenches covered and/or fenced nightly? **Yes**
- I. Are excavations covered or equipped with earthen wildlife escape ramps by the end of the day? **Yes**

J. General Notes/Comments

City of Chula Vista workers cleared brush from the slope south of Hunte Parkway and west of the Project limits. An American crow pair was observed building a stick nest 80-feet up in east corner of the transmission tower located adjacent to the east corner of the Project. A nest buffer was established at 150-feet. The same pair were observed carrying sticks to the next transmission tower, across Hunte Parkway to the northwest, in which three partially constructed stick nests were observed.

Cultural Resources

No Cultural Data Collected

Paleontological Resources

No Paleontological Data Collected

Dust Control

Monitor: Andrew Steyers

Compliance Level: In Compliance

- A. Are materials carried off site covered or watered prior to leaving site? **Yes**
- B. Are exposed stockpiles of dirt covered or watered to control fugitive dust? **Yes**
- C. Is all soil material tracked onto paved public roads swept daily? **Yes**
- D. Are all work areas and access roads watered daily if there is persistent fugitive dust is visible beyond the work area boundaries? **Yes**
- E. Are all loads covered or have a minimum of two feet of freeboard? **Yes**
- F. If sustained winds of 20 mph or greater are experienced, were soil disturbing activities terminated? **N/A**

Salt Creek Daily Inspection

Monitor Date: 4/28/2017

G. Are rock aprons or rattle/shaker plates installed at the intersections of dirt access routes and paved public roadways? **No**

With the opening of the main gate and "Road A" to traffic, the corridor road gate will no longer be used by the Project and the rattle plates there have been removed.

Erosion and Sediment

Monitor: Andrew Steyers

Compliance Level: In Compliance

A. Are there sufficient quantities of erosion control materials stockpiled at the construction site? **Yes**

B. Are all locations of temporary stockpiles in approved areas and appropriately protected? **Yes**

C. Were any rolled erosion control products used? **Yes**

Straw wattle were used for erosion control.

D. Were rolled erosion products comprised of entirely natural fiber biodegradable materials? **Yes**

Hazardous Substances

Monitor: Andrew Steyers

Compliance Level: In Compliance

A. Is fueling conducted in appropriate areas with appropriate containment and spill materials? **Yes**

B. Are vehicles and equipment checked for leaks? **Yes**

C. Were any leaks observed? **No**

D. Are spills cleaned up and disposed of properly? **Yes**

E. Are clean-up materials available on site in case of a spill? **Yes**

F. Was discolored or odiferous soil or groundwater encountered during excavation activities? **No**

Waste

Monitor: Andrew Steyers

Compliance Level: In Compliance

A. Is project-generated litter removed from the construction site daily? **Yes**

B. Are waste management receptacle levels appropriately maintained? **Yes**

ATTACHMENT C: MMCRP CHECKLIST

SALT CREEK SUBSTATION PROJECT

Weekly MMCRP Checklist

Completed by: Andrew Steyers
 Organization: Blackhawk Environmental
 Position: LEI

Day of the Week	Mon	Tue	Wed	Thu	Fri	Sat	Sun
Date (mm/dd/yy)	4/24/17	4/25/17	4/26/17	4/27/17	4/28/17	4/29/17	
A. Daily Work Hours and Workforce							
Start Time (hh:mm am/pm)			7:00 am		7:00 am		
Stop Time			5:30 pm		2:00 pm		
Construction Personnel Onsite			21		14		
Compliance Personnel Onsite			2		1		
Total Personnel Onsite	0	0	23	0	15	0	0
B. Daily Construction Activities – Check only if applicable							
1. Mobilized materials/equipment or prepared work areas	<input type="checkbox"/>	<input type="checkbox"/>	<input checked="" type="checkbox"/>	<input type="checkbox"/>	<input checked="" type="checkbox"/>	<input type="checkbox"/>	<input type="checkbox"/>
2. Cleared or trimmed vegetation	<input type="checkbox"/>	<input type="checkbox"/>	<input type="checkbox"/>	<input type="checkbox"/>	<input type="checkbox"/>	<input type="checkbox"/>	<input type="checkbox"/>
3. Conducted earthwork (grading, trenching, or other ground disturbance)	<input type="checkbox"/>	<input type="checkbox"/>	<input type="checkbox"/>	<input type="checkbox"/>	<input type="checkbox"/>	<input type="checkbox"/>	<input type="checkbox"/>
4. Developed site surfaces (substation pad or access roads)	<input type="checkbox"/>	<input type="checkbox"/>	<input type="checkbox"/>	<input type="checkbox"/>	<input type="checkbox"/>	<input type="checkbox"/>	<input type="checkbox"/>
5. Developed site drainage facilities	<input type="checkbox"/>	<input type="checkbox"/>	<input type="checkbox"/>	<input type="checkbox"/>	<input type="checkbox"/>	<input type="checkbox"/>	<input type="checkbox"/>
6. Installed underground facilities	<input type="checkbox"/>	<input type="checkbox"/>	<input type="checkbox"/>	<input type="checkbox"/>	<input type="checkbox"/>	<input type="checkbox"/>	<input type="checkbox"/>
7. Installed aboveground facilities	<input type="checkbox"/>	<input type="checkbox"/>	<input checked="" type="checkbox"/>	<input type="checkbox"/>	<input checked="" type="checkbox"/>	<input type="checkbox"/>	<input type="checkbox"/>
8. Installed landscaping	<input type="checkbox"/>	<input type="checkbox"/>	<input type="checkbox"/>	<input type="checkbox"/>	<input type="checkbox"/>	<input type="checkbox"/>	<input type="checkbox"/>
9. Demobilized materials/equipment or cleaned up work areas	<input type="checkbox"/>	<input type="checkbox"/>	<input type="checkbox"/>	<input type="checkbox"/>	<input type="checkbox"/>	<input type="checkbox"/>	<input type="checkbox"/>
10. Other	<input type="checkbox"/>	<input type="checkbox"/>	<input type="checkbox"/>	<input type="checkbox"/>	<input type="checkbox"/>	<input type="checkbox"/>	<input type="checkbox"/>
C. Daily Compliance Activities – Check only if applicable and implemented adequately without incident							
Avoidance and Minimization, and General Monitoring							
1. Limited activities to approved work areas and access roads (APM BIO-2 and MM Biology-1a)	<input type="checkbox"/>	<input type="checkbox"/>	<input checked="" type="checkbox"/>	<input type="checkbox"/>	<input checked="" type="checkbox"/>	<input type="checkbox"/>	<input type="checkbox"/>
2. Limited dust generation and emissions to required thresholds (APM AIR-1, APM AIR-2, MM Air-1, MM Biology-1a, and MM GHG-1)	<input type="checkbox"/>	<input type="checkbox"/>	<input checked="" type="checkbox"/>	<input type="checkbox"/>	<input checked="" type="checkbox"/>	<input type="checkbox"/>	<input type="checkbox"/>
3. Avoided sensitive plant habitat (APM BIO-2, MM Biology-1a, MM Biology-2, and MM Biology-9)	<input type="checkbox"/>	<input type="checkbox"/>	<input checked="" type="checkbox"/>	<input type="checkbox"/>	<input checked="" type="checkbox"/>	<input type="checkbox"/>	<input type="checkbox"/>
4. Avoided sensitive wildlife habitat (APM BIO-3, MM Biology-1a, MM Biology-7, and MM Biology-8)	<input type="checkbox"/>	<input type="checkbox"/>	<input checked="" type="checkbox"/>	<input type="checkbox"/>	<input checked="" type="checkbox"/>	<input type="checkbox"/>	<input type="checkbox"/>
5. Avoided active bird nests or burrows (APM BIO-1, APM BIO-2, MM Biology-1a, and MM Biology-6)	<input type="checkbox"/>	<input type="checkbox"/>	<input checked="" type="checkbox"/>	<input type="checkbox"/>	<input checked="" type="checkbox"/>	<input type="checkbox"/>	<input type="checkbox"/>
6. Avoided sensitive water features and aquatic habitat (APM HAZ-1, MM Biology-1a, and APM HYDRO-2)	<input type="checkbox"/>	<input type="checkbox"/>	<input checked="" type="checkbox"/>	<input type="checkbox"/>	<input checked="" type="checkbox"/>	<input type="checkbox"/>	<input type="checkbox"/>
7. Installed/maintained erosion or sediment controls (APM BIO-2, APM BIO-4, MM Biology-1a, MM Geology-1, APM HYDRO-1, and MM Hydro-2)	<input type="checkbox"/>	<input type="checkbox"/>	<input checked="" type="checkbox"/>	<input type="checkbox"/>	<input checked="" type="checkbox"/>	<input type="checkbox"/>	<input type="checkbox"/>
8. Implemented invasive weed measures (MM Biology-3)	<input type="checkbox"/>	<input type="checkbox"/>	<input checked="" type="checkbox"/>	<input type="checkbox"/>	<input checked="" type="checkbox"/>	<input type="checkbox"/>	<input type="checkbox"/>

Weekly MMCRP Checklist

Day of the Week	Mon	Tue	Wed	Thu	Fri	Sat	Sun
Dates	4/24/17	4/25/17	4/26/17	4/27/17	4/28/17	4/29/17	
9. Managed hazardous materials and waste (APM BIO-2, MM Biology-1a, APM HAZ-1, and APM HAZ-2)	<input type="checkbox"/>	<input type="checkbox"/>	<input checked="" type="checkbox"/>	<input type="checkbox"/>	<input checked="" type="checkbox"/>	<input type="checkbox"/>	<input type="checkbox"/>
10. Implemented fire prevention measures (MM Biology-1a, APM HAZ-3, and MM Hazards-2)	<input type="checkbox"/>	<input type="checkbox"/>	<input checked="" type="checkbox"/>	<input type="checkbox"/>	<input checked="" type="checkbox"/>	<input type="checkbox"/>	<input type="checkbox"/>
11. Avoided known cultural, paleontological, and tribal resources (APM CUL-2, APM CUL-7, MM Cultural Resources-1, MM Cultural Resources-2, MM Cultural Resources-3, MM Cultural Resources-4, and MM Cultural Paleontology-1)	<input type="checkbox"/>	<input type="checkbox"/>	<input checked="" type="checkbox"/>	<input type="checkbox"/>	<input checked="" type="checkbox"/>	<input type="checkbox"/>	<input type="checkbox"/>
12. Limited construction noise to maximum levels (APM NOISE-1, APM NOISE-3, MM Noise-1, and MM Noise-2)	<input type="checkbox"/>	<input type="checkbox"/>	<input checked="" type="checkbox"/>	<input type="checkbox"/>	<input checked="" type="checkbox"/>	<input type="checkbox"/>	<input type="checkbox"/>
13. Maintain existing vehicle and trail access (APM REC-1, MM Recreation-2, APM TRANS-1, and MM Traffic-3)	<input type="checkbox"/>	<input type="checkbox"/>	<input checked="" type="checkbox"/>	<input type="checkbox"/>	<input checked="" type="checkbox"/>	<input type="checkbox"/>	<input type="checkbox"/>
14. Provided workers with required environmental trainings (APM BIO-1, APM BIO-2, MM Biology-1a, APM CUL-1, APM GHG-1, APM HAZ-1, APM HAZ-3, and APM HYDRO-1)	<input type="checkbox"/>	<input type="checkbox"/>	<input checked="" type="checkbox"/>	<input type="checkbox"/>	<input checked="" type="checkbox"/>	<input type="checkbox"/>	<input type="checkbox"/>
15. Implemented MMCRP procedures	<input type="checkbox"/>	<input type="checkbox"/>	<input checked="" type="checkbox"/>	<input type="checkbox"/>	<input checked="" type="checkbox"/>	<input type="checkbox"/>	<input type="checkbox"/>
SDG&E Specialty Monitoring							
16. Special-status wildlife (APM BIO-2, MM Biology-1a, MM Biology-7, and MM Biology-8)	<input type="checkbox"/>	<input type="checkbox"/>	<input checked="" type="checkbox"/>	<input type="checkbox"/>	<input checked="" type="checkbox"/>	<input type="checkbox"/>	<input type="checkbox"/>
17. Nesting birds/burrowing owls (APM BIO-1 and MM Biology-6)	<input type="checkbox"/>	<input type="checkbox"/>	<input checked="" type="checkbox"/>	<input type="checkbox"/>	<input checked="" type="checkbox"/>	<input type="checkbox"/>	<input type="checkbox"/>
18. Special-status plants (APM BIO-2, MM Biology-1a, MM Biology-3, and MM Biology-1b)	<input type="checkbox"/>	<input type="checkbox"/>	<input checked="" type="checkbox"/>	<input type="checkbox"/>	<input checked="" type="checkbox"/>	<input type="checkbox"/>	<input type="checkbox"/>
19. Aquatic/hydrologic resources (APM HYDRO-1 and MM Geology-1)	<input type="checkbox"/>	<input type="checkbox"/>	<input checked="" type="checkbox"/>	<input type="checkbox"/>	<input checked="" type="checkbox"/>	<input type="checkbox"/>	<input type="checkbox"/>
20. SWPPP/reclamation (APM HYDRO-1, MM Geology-1, and MM Biology-11)	<input type="checkbox"/>	<input type="checkbox"/>	<input checked="" type="checkbox"/>	<input type="checkbox"/>	<input checked="" type="checkbox"/>	<input type="checkbox"/>	<input type="checkbox"/>
21. Cultural resources (APM CUL-2, MM Cultural Resources-1, MM Cultural Resources-2, and MM Cultural Resources-3)	<input type="checkbox"/>	<input type="checkbox"/>	<input checked="" type="checkbox"/>	<input type="checkbox"/>	<input checked="" type="checkbox"/>	<input type="checkbox"/>	<input type="checkbox"/>
22. Paleontological resources (APM CUL-5, APM CUL-6, and MM Paleontology 1)	<input type="checkbox"/>	<input type="checkbox"/>	<input checked="" type="checkbox"/>	<input type="checkbox"/>	<input checked="" type="checkbox"/>	<input type="checkbox"/>	<input type="checkbox"/>
23. Tribal resources (MM Cultural Resources-4)	<input type="checkbox"/>	<input type="checkbox"/>	<input checked="" type="checkbox"/>	<input type="checkbox"/>	<input checked="" type="checkbox"/>	<input type="checkbox"/>	<input type="checkbox"/>
24. Fire management (APM HAZ-3)	<input type="checkbox"/>	<input type="checkbox"/>	<input checked="" type="checkbox"/>	<input type="checkbox"/>	<input checked="" type="checkbox"/>	<input type="checkbox"/>	<input type="checkbox"/>
D. SDG&E Record of Weekly Incidents							
Compliance Level 1: Occurrences	0	0	0	0	0	0	
Compliance Level 2: Minor Problems	0	0	0	0	0	0	
Compliance Level 3: Compliance Issues	0	0	0	0	0	0	
Compliance Level 4: Noncompliances	0	0	0	0	0	0	
Total Compliance Level Incidents	0	0	0	0	0	0	0
Health and Safety Incidents	0	0	0	0	0	0	
Public Complaints	0	0	0	0	0	0	
Total Incidents	0	0	0	0	0	0	0