



**Pacific Gas and
Electric Company®**

Matthew A. Fogelson
Attorney at Law
Registered In-House Counsel,
Licensed in the District of Columbia and
New York

Law Department
77 Beale Street, B30A
San Francisco, CA 94105-1814

Mailing Address:
P. O. Box 7442, B30A
San Francisco, CA 94120-7442

415.973.7475
Fax: 415.973.5520
E-Mail: MAFv@pge.com

November 27, 2012

Via E-Mail
Tania.Treis@PanoramaEnv.com
and U. S. Mail

Ms. Tania Treis, Principal
PANORAMA ENVIRONMENTAL CONSULTING, INC.
One Embarcadero Center, Suite 740
San Francisco, CA 94111-3652

**Re: Santa Cruz 115 Kilovolt Reinforcement Project (A. 12-01-012)
Response to California Public Utilities Commission Data Request No. 3**

Dear Ms. Treis:

This letter is in reply to your October 31, 2012 letter in which you request certain additional information regarding Pacific Gas and Electric Company's ("PG&E") Application for a Permit to Construct the Santa Cruz 115 Kilovolt ("kV") Reinforcement Project, California Public Utilities Commission ("CPUC") Docket No. A.12-01-012 ("Project"). The original text for each Data Request is included, followed by PG&E's response.

Data Request No. 1:

Please confirm that the attached figures accurately represent all Project elements and their locations based on the changes that have been made since July 2012. Please note that the Project study area is shown as 250 feet on these figures; however, per recent discussion and confirmation under point 2 below, the study area will be changed to 150 feet around Project features and 100 feet around staging and laydown areas.

PG&E's Response:

The referenced figures are accurate with one exception: the road-type designation for the access to Pole E-76 on Panorama Site Map 13 should be depicted as partially overland and not as entirely existing unpaved. A map showing the proper designation is attached.

Data Request No. 2:

Please confirm that the "project study area", as shown in the attached figures, encompasses PG&E's potential project and project activities. The "project study



Ms. Tania Treis, Principal
PANORAMA ENVIRONMENTAL CONSULTING, INC.
Re: PG&E's Response to CPUC's Data Request No. 3
November 27, 2012
Page 2

area" is defined as a 150-foot buffer around all project features and on either side of the alignment (for a 300-foot total width around the power line) and 100 feet around staging and laydown areas.

PG&E's Response:

PG&E confirms as accurate the referenced "project study area."

Data Request No. 3:

Please provide an update to the project schedule. It is our understanding that construction will now not likely begin until January 2014. Also, PG&E initially indicated that construction would take 6 months; however, based on site visits and initial evaluation of impacts to sensitive resources; please confirm that construction may take up to 18 months.

PG&E's Response:

Construction is expected to commence in January 2013, or as soon thereafter as possible, and could take as long as 18 months to complete.

Data Request No. 4:

Provide date that final engineering will be complete.

PG&E's Response:

Final engineering is expected to be completed in February 2013.

Data Request No. 5:

Table 2-1, Table 2-3, and Table 2-4 in the PEA describe the number and types of poles installed and removed, the total length and acreages of access roads, and the total acreages of temporary work areas for the project. The footnote in each table indicates that the tables are preliminary and subject to change based on CPUC requirements, final engineering, and other factors.



Ms. Tania Treis, Principal
PANORAMA ENVIRONMENTAL CONSULTING, INC.
Re: PG&E's Response to CPUC's Data Request No. 3
November 27, 2012
Page 3

The CPUC has recommended that a 10 percent "buffer" to each of these quantifications be included in the Project description of the CEQA document and included in the Project's impact analyses in order to allow for flexibility in construction while still fully assessing the Project's environmental impacts in compliance with CEQA. Please confirm that including a 10-percent addition to the number of poles added, number of poles removed, trees removed, access road lengths, pole work area size, and total ground disturbance would cover potential changes to the Project activities during construction based on previous experience with construction of similar projects.

PG&E's Response:

PG&E confirms the recommended approach of including a 10% "buffer" to the components described above.

Data Request No. 6:

For how long would Pinto Lake County Park be closed during pole installation and removal activities?

PG&E's Response:

The areas around affected poles in Pinto Lake County Park will be closed for approximately ten days during removal of existing poles, excavation, pouring of concrete, and installation of the poles. Areas of Pinto Lake County Park not in proximity to the affected poles will not be closed during installation and removal activities.

Please note that the following sentence on P.3.8-26, Section 3.8.4.3 of the PEA should be stricken:

"However, all pole construction will occur during the dry season, when no water will be present in the majority of the hydrologic features in the project area."

PG&E requests the flexibility to install poles during the rainy season; measures listed in APM HYD-01 will reduce to a less than significant level any potential impacts to hydrological features from pole construction.

//



Ms. Tania Treis, Principal
PANORAMA ENVIRONMENTAL CONSULTING, INC.
Re: PG&E's Response to CPUC's Data Request No. 3
November 27, 2012
Page 4

Data Request No. 7:

Would Pinto Lake County Park be closed during the entire time period during which concrete for the TSP foundations is curing (estimated to be seven to fourteen days)?

PG&E's Response:

Once a foundation is poured and finished, construction personnel will install orange barricade fencing around the foundation while the concrete cures, and then come back to install the poles. During this interim period while the concrete cures, recreational users will not have access to the isolated concrete foundation locations, but will have access to the rest of the park. PG&E will coordinate with County State Parks concerning lane closures and closures of isolated areas where construction is occurring, for safety purposes.

Data Request No. 8:

What is the new estimate of the quantity of water required for construction with the lengthened construction period of eighteen months? It currently is 240,000 gallons.

PG&E's Response:

PG&E estimates that it will use approximately 240,000 gallons of water over the course of the 18-month construction period.

Data Request No. 9:

How many of the 165 trees slated for removal are larger than 20 inches?

PG&E's Response:

PG&E plans to remove approximately 45 trees greater than 20 inches in diameter at breast height. Note that PG&E, in consultation with affected landowners, plans to dispose of removed trees and branches that are trimmed from trees either by mulching material and leaving it onsite, by cutting trees into logs, or by removing material from the site.

//



Ms. Tania Treis, Principal
PANORAMA ENVIRONMENTAL CONSULTING, INC.
Re: PG&E's Response to CPUC's Data Request No. 3
November 27, 2012
Page 5

Data Request No. 10:

How many of the 165 trees slated for removal are included in a sprout clump of five or more stems each of which is greater than 12 inches?

PG&E's Response:

PG&E does not have this data readily available. PG&E can develop the data upon request but will need at least two weeks to compile it.

Data Request No. 11:

How many of the 165 trees slated for removal are included in a group consisting of five or more trees on one parcel, each of which is greater than 12 inches?

PG&E's Response:

PG&E plans to remove approximately 80 trees greater than 12 inches in diameter at breast height in a group consisting of five or more trees on one parcel.

Data Request No. 12:

Please provide any additional protests and/or comments received or replies sent, other than those listed below. If there are no additional protests, comments, or replies please confirm that the list below is complete.

Protester	Protest Date	Reply Date
Britt L. Haselton, Joseph G. Haselton	March 5, 2012	March 15, 2012
David W. Black, D.D.S.	April 3, 2012	April 19, 2012
Raymond and Nancy Benson	April 5, 2012	April 19, 2012
Richard V. Ulrick	April 6, 2012	April 19, 2012
Rosanne Ilar and Jesse Wilson	April 9, 2012	April 19, 2012

//



Ms. Tania Treis, Principal
PANORAMA ENVIRONMENTAL CONSULTING, INC.
Re: PG&E's Response to CPUC's Data Request No. 3
November 27, 2012
Page 6

PG&E's Response:

To PG&E's knowledge, the above-referenced list is complete.

We trust the information provided herein is fully responsive to your requests. However, should you have any further questions, please do not hesitate to contact me at (415) 973-7475.

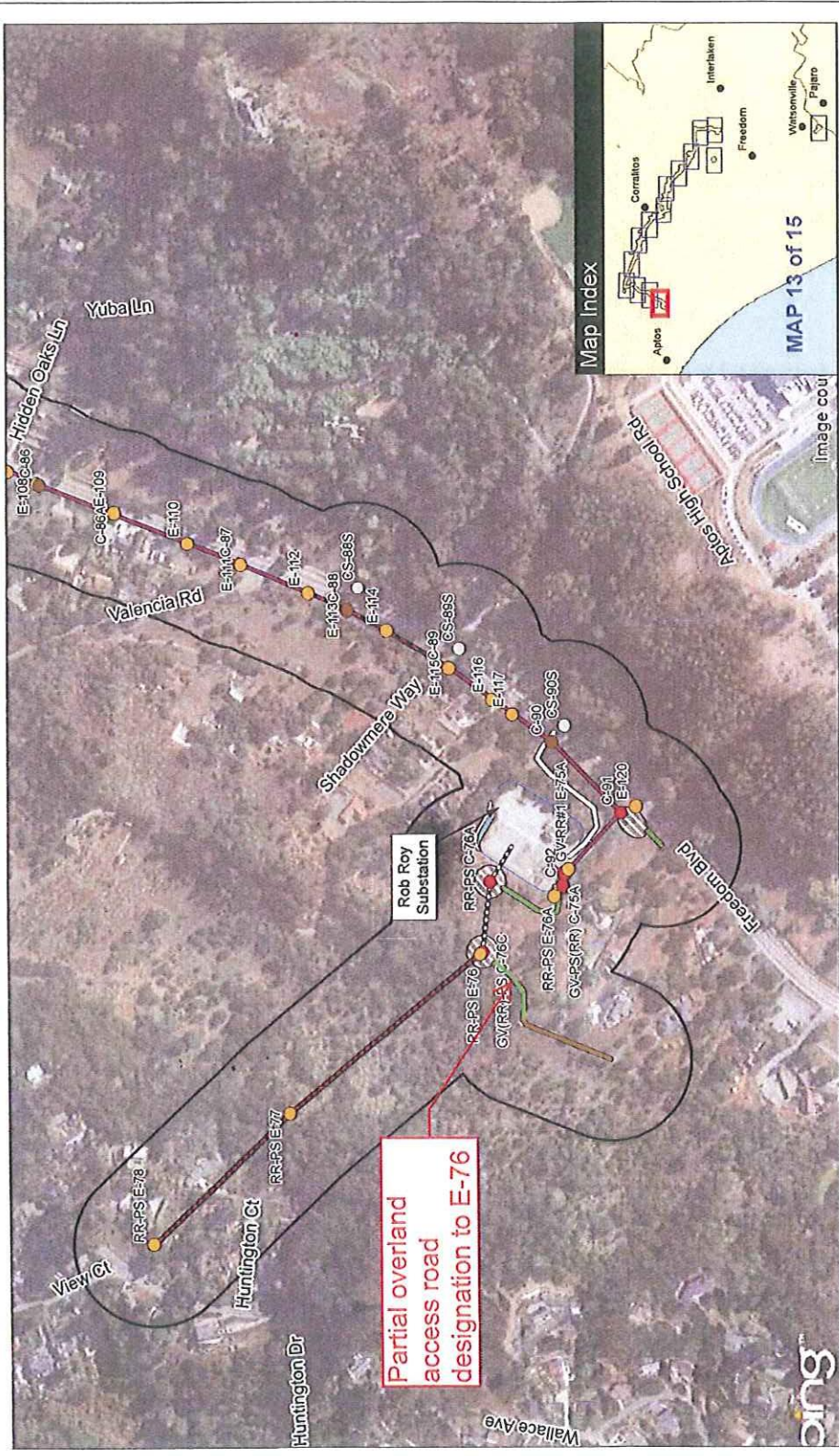
Very truly yours,

A handwritten signature in blue ink, appearing to read 'MAF', with a long horizontal flourish extending to the right.

Matthew A. Fogelson

MAF:bd
Enclosure (1) – Map of Access to Pole E-76

cc: Ms. Lisa Orsaba, Infrastructure Permitting & CEQA, Energy Division, *Via E-Mail* Lisa.Orsaba@cpuc.ca.gov
Ms. Susanne Heim, Panorama Environmental Consulting, Inc., *Via E-Mail* Susanne.Heim@PanoramaEnv.com
Mr. Brandon Liddell, Senior Land Planner - PG&E



Partial overland access road designation to E-76

SOURCE: ESRI 2012 and Panorama Environmental, Inc. 2012

Scale: 1:6,000

LEGEND

- Project Study Area
- Rob Roy-Paul Sweet Alignment Retention Segment
- Rob Roy-Paul Sweet Alignment New Line
- Rob Roy-Paul Sweet Alignment Reconnection Segment
- Northern Alignment
- Cox-Freedom Alignment
- Cox-Freedom Alignment Reconnection Segment
- Pole Work Area
- Contractor Construction Yard
- Landing Zone / Staging Area
- Tension Pull Site
- Guard Structure Work Area
- Work Area
- Existing Pole Structure
- New Distribution Pole
- New Sub Pole
- New TSP
- New Wood Pole
- Overland Access Road
- Existing Unpaved Road
- Existing Paved Road
- Improved Access Road
- Permanent Cut and Fill Area
- Rob Roy Substation Modification Area
- Existing Substation Boundary

Feet
0 100 200 400 600 800

