
Public Meeting
Draft Initial Study/Mitigated Negative Declaration
Pacific Gas & Electric Company's
Santa Cruz 115-kV Reinforcement Project
Application No. 12-01-012

California Public Utilities Commission
November 6, 2013



Meeting Agenda

1. Purpose of the Meeting
2. Overview of the Proposed Project
3. California Public Utilities Commission (CPUC) Role and Review Process
4. Environmental Review
5. Public Participation During Environmental Review
6. Public Comments



11/6/2013

Santa Cruz 115-kV Reinforcement Project
Public Meeting

Purpose of Meeting

- To provide information to the public and responsible agencies about the proposed Santa Cruz 115-kV Reinforcement Project
- To provide information to the public about the environmental document and review process
- To explain how the public can participate in the CPUC decision-making process
- To collect public comments



11/6/2013

Santa Cruz 115-kV Reinforcement Project
Public Meeting

Roles

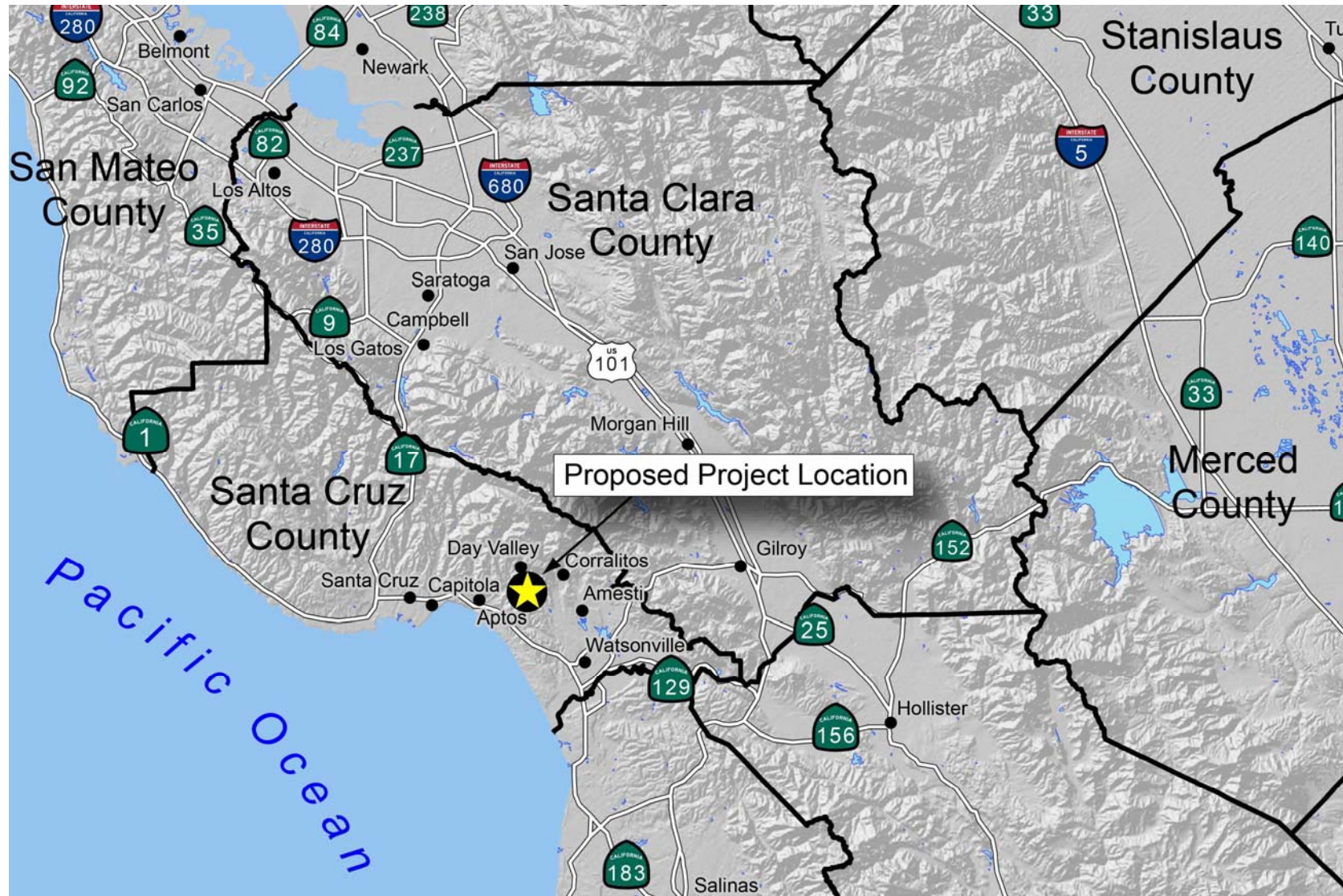
- CPUC:
 - Lead Agency under the California Environmental Quality Act (CEQA)
- Pacific Gas and Electric Company (PG&E):
 - Project Applicant
- Panorama Environmental, Inc.
 - CPUC Environmental Contractor
- Other agencies
 - Several permitting/review agencies consulted for input



11/6/2013

Santa Cruz 115-kV Reinforcement Project
Public Meeting

Project Location



Overview of Proposed Project

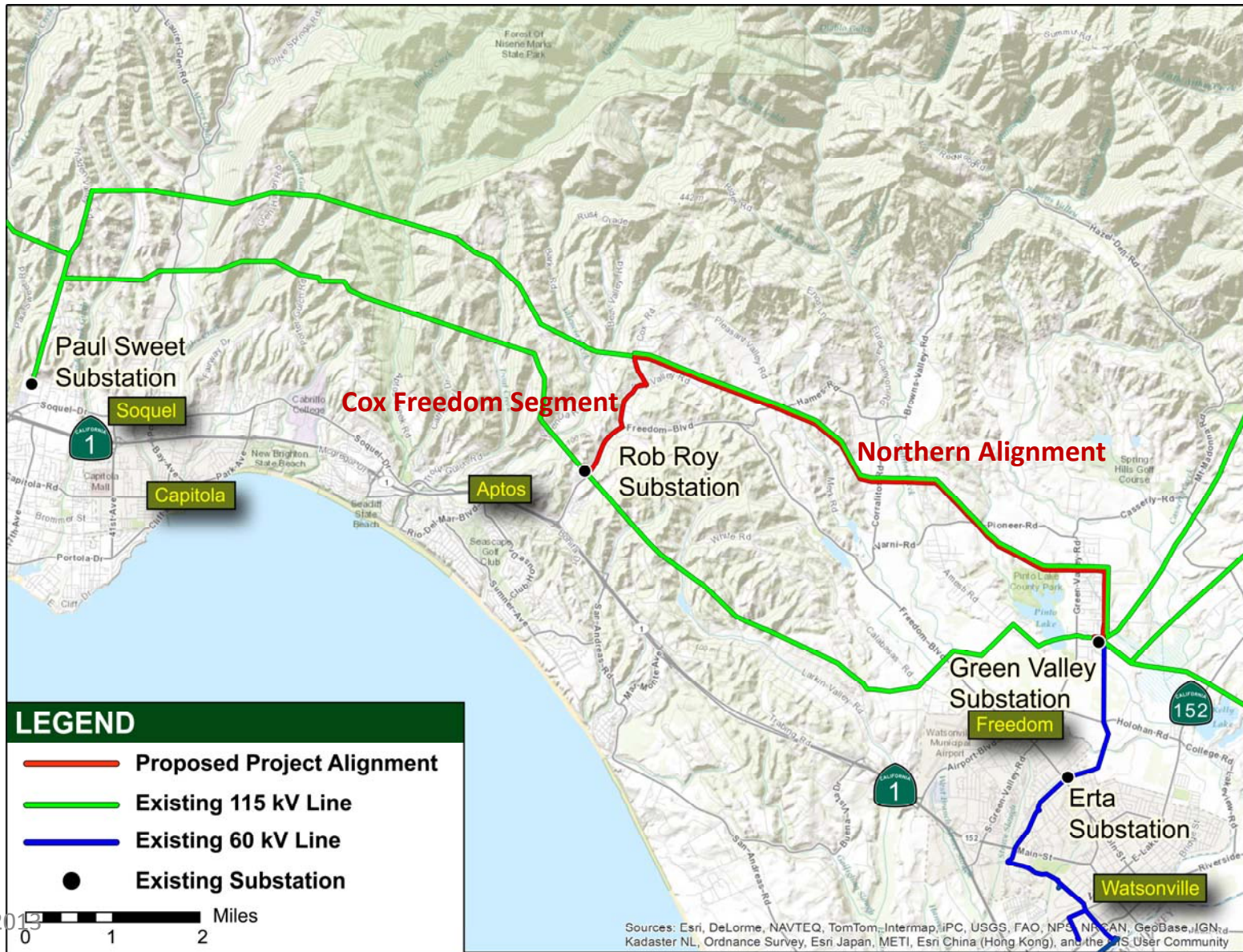
- Add a second 115-kV circuit between Green Valley Substation and Rob Roy Substation



11/6/2013

Santa Cruz 115-kV Reinforcement Project
Public Meeting

Overview of Proposed Project



11/6/2019

Project Elements

Northern Alignment

- Convert 7.1 miles single-circuit 115 kV to double-circuit
 - Replace ~60 ft wood poles to ~90 ft tubular steel poles (TSP)

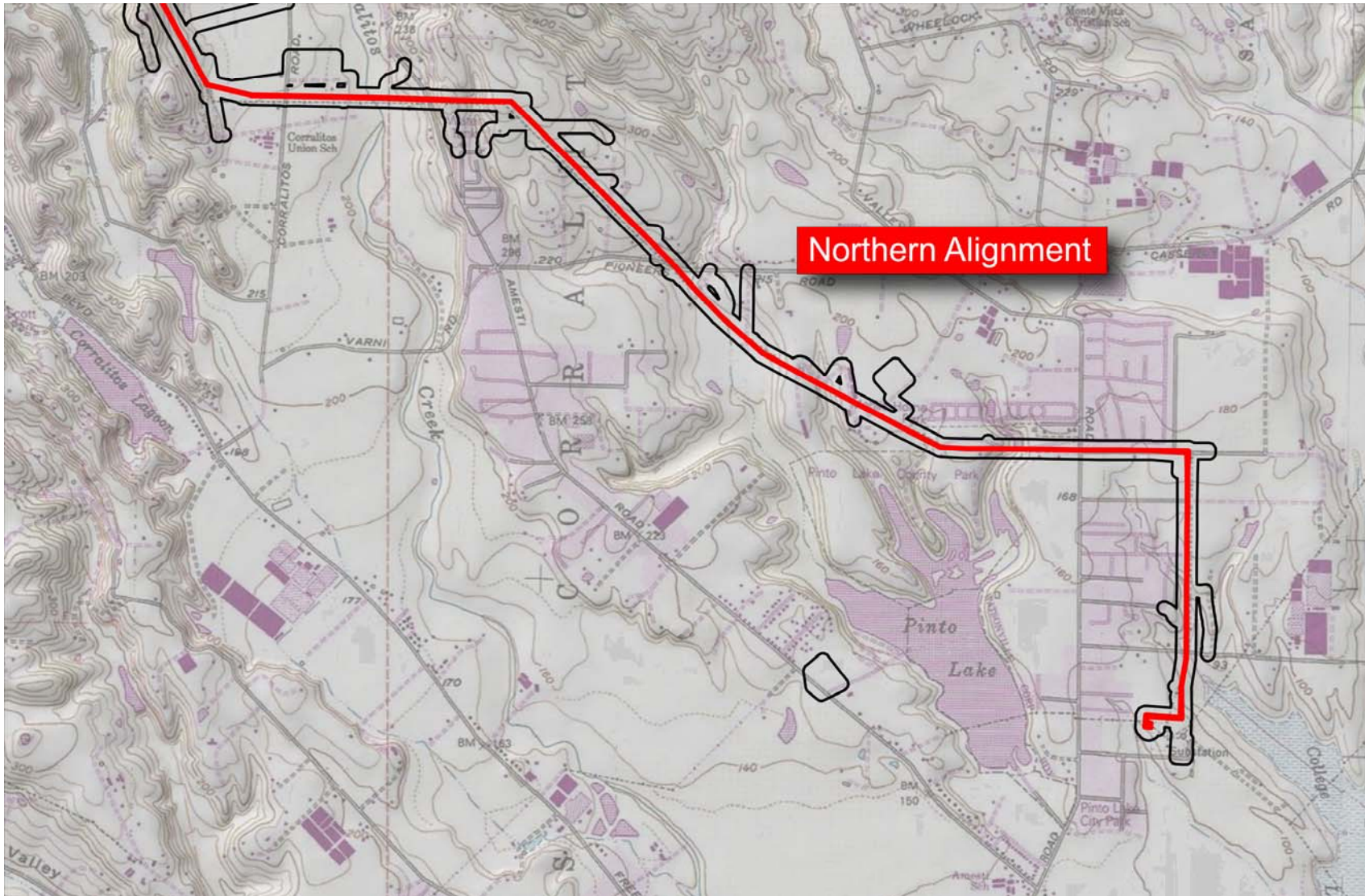
Cox-Freedom Segment

- Build 1.7 miles new single-circuit 115kV along existing distribution alignment
 - Replace ~ 39 ft wood distribution poles with ~89 ft wood transmission poles
 - Install four new ~98 ft TSPs

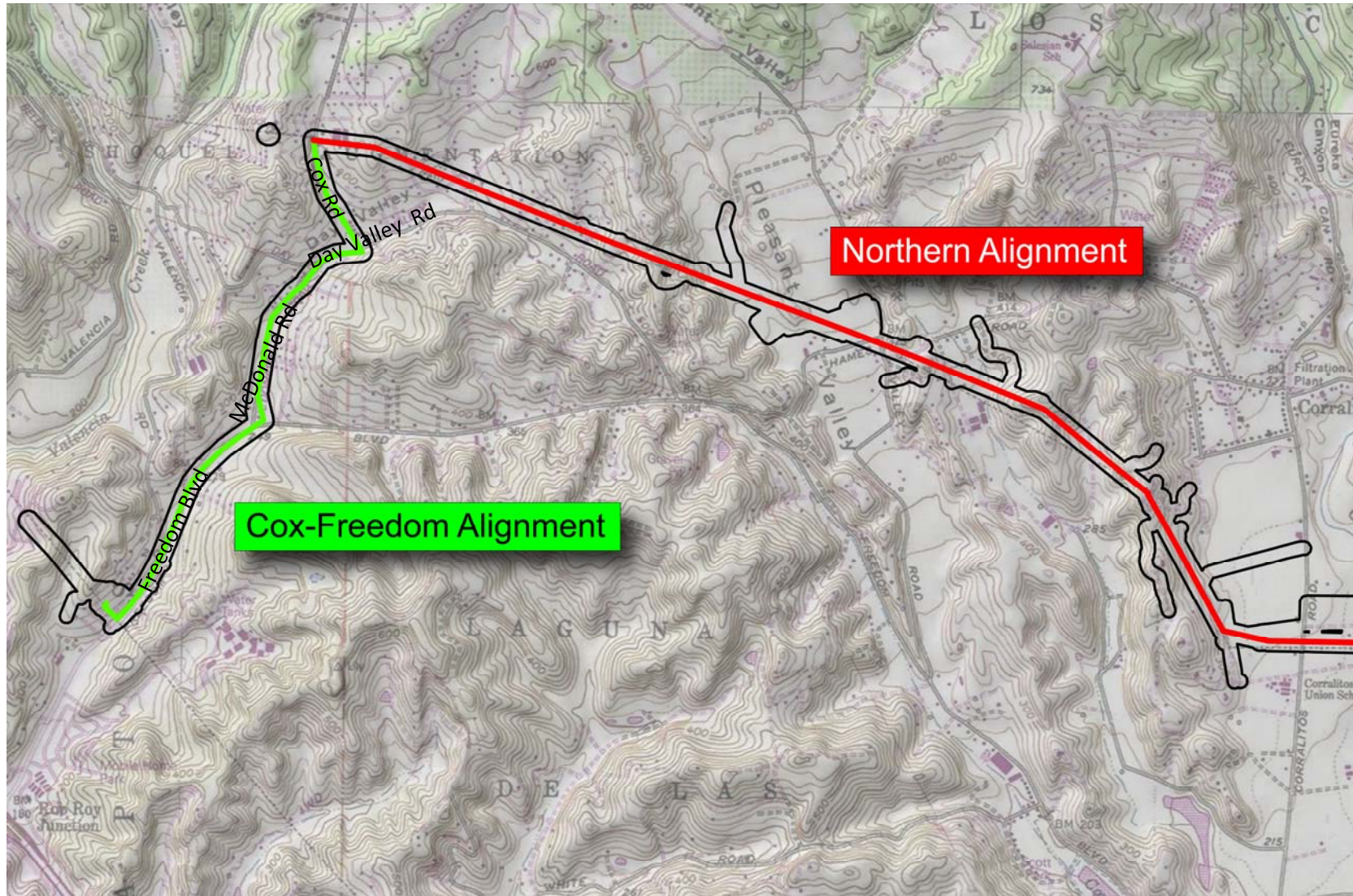
Rob Roy Substation Modifications

- Modify substation and existing power lines
 - Changes to accommodate line
 - Install 4 new ~84 ft TSPs replacing 3 wood poles

Site Map (Eastern Project Corridor)

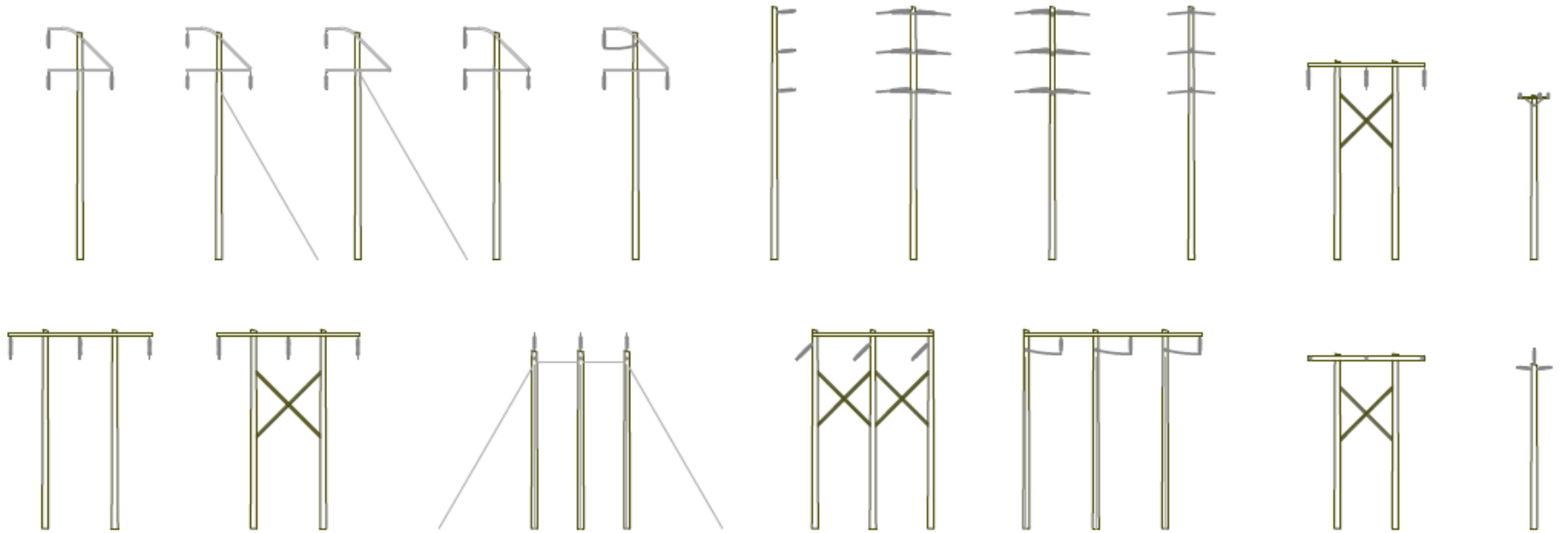


Site Map (Western Project Corridor)

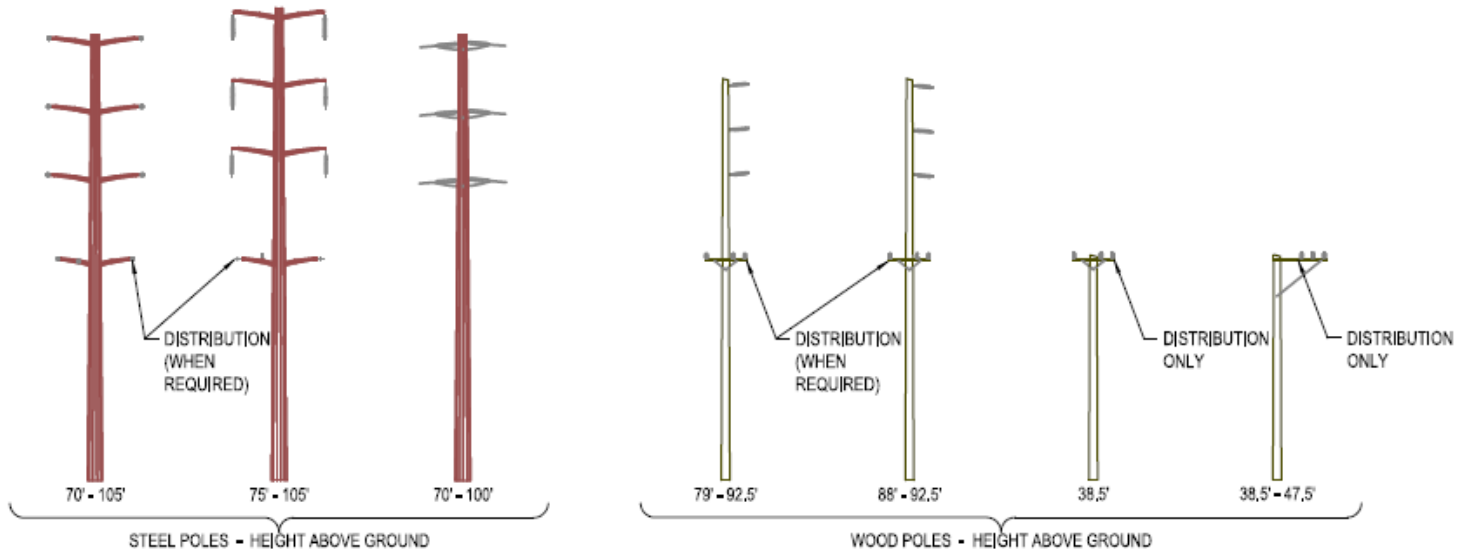


Typical Pole Drawings

EXISTING WOOD POLES - HEIGHT ABOVE GROUND 32.5' - 76.25'



PROPOSED POLES



11/6/2013

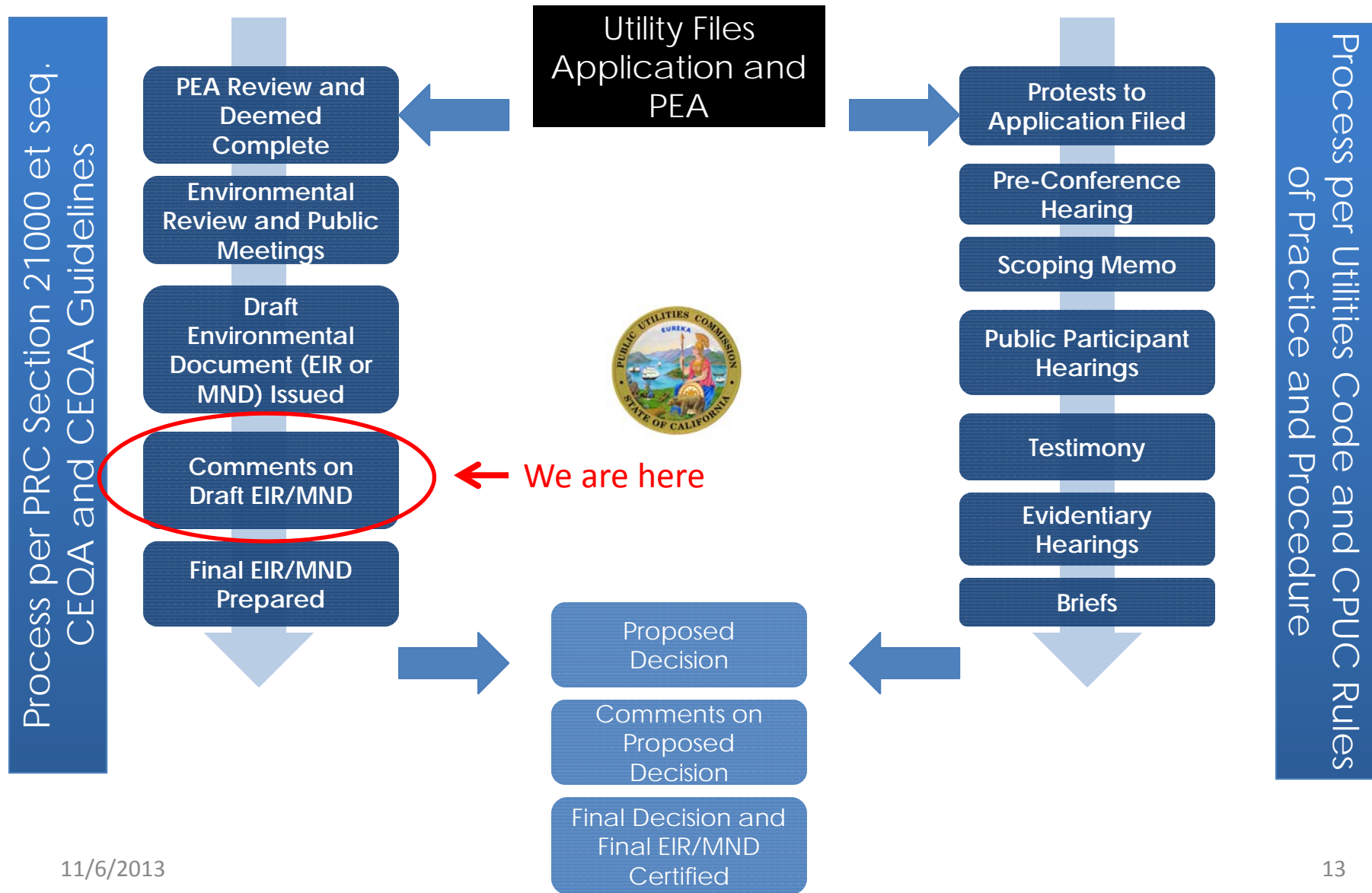
Project Purpose

- Improve the area electrical system's capacity and reliability
 - Population and demand has increased substantially since the system was built in the 1970s
 - Rob Roy Substation and associated power lines have never been upgraded



Santa Cruz 115-kV Reinforcement Project
Public Meeting

CPUC Review Process



Environmental Review Topics

- Aesthetics
- Agriculture and forestry resources
- Air quality/greenhouse gas emissions
- Biological resources
- Cultural resources
- Geology and soils
- Hazards and hazardous materials
- Hydrology and water quality
- Land use and planning
- Mineral resources
- Noise
- Population and housing
- Public services (fire, police, schools, and parks)
- Recreation
- Transportation and traffic
- Utilities and service systems (water, wastewater, and solid waste)

***Per CEQA Guidelines App G.*



Santa Cruz 115-kV Reinforcement Project
Public Meeting

11/6/2013

14

Potential Environmental Impacts

Impact Determination

- Determined during review under CEQA
- Based on information from applicant and CPUC's additional research

Applicant Proposed Measures (APMs)

- Proposed by PG&E
- Considered part of the project
- Revised through process

Mitigation Measures (MMs)

- Developed by CPUC
- Mitigate potentially significant impacts

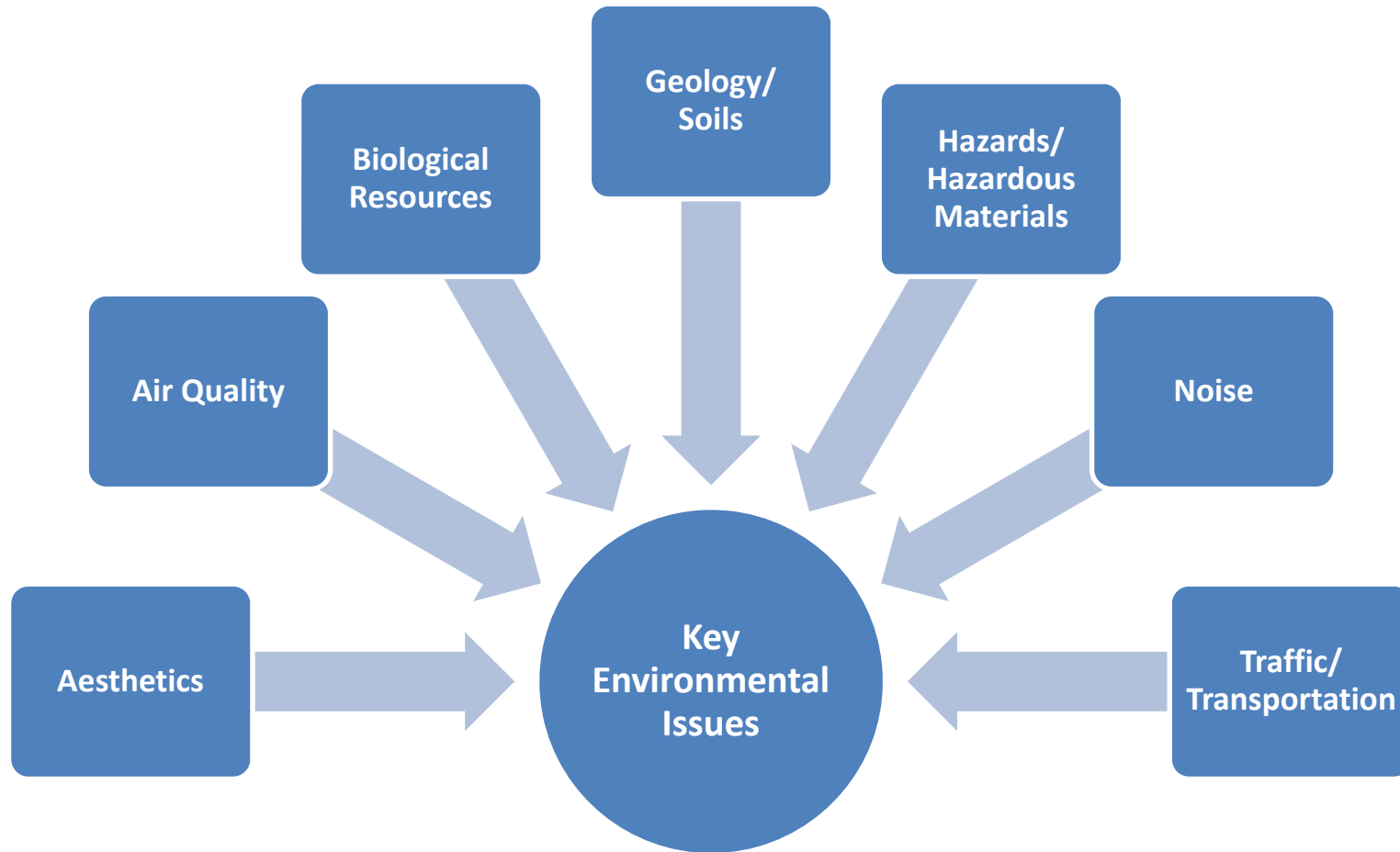


Santa Cruz 115-kV Reinforcement Project
Public Meeting

11/6/2013

15

Key Environmental Issues



Santa Cruz 115-kV Reinforcement Project
Public Meeting

11/6/2013

16

Key Environmental Issues

- **Issues:** Changes to visual character from changes in pole types and heights and tree removal
- **Studies:** A series of visual simulations by landscape unit were prepared to assess the visual impacts of the project
- **Analysis:** *Less than significant impacts*
 - New power line similar to existing power lines in character and configuration in existing ROW
 - TSPs rust colored to look like wood and blend with surroundings
 - Other utility infrastructure in project corridor
 - No view obstruction
 - Incremental change but less than significant
 - Loss of trees along current alignment – will not significantly change tree density and patterns in area



Santa Cruz 115-kV Reinforcement Project
Public Meeting

11/6/2013

17

Corralitos Road near Skylark Lane, Looking North (Corralitos: Before Proposed Project)



11/6/2013

Santa Cruz 115-kV Reinforcement Project
Public Meeting

Source:
Draft IS/MND,
Figure 3.1-7 18

Corralitos Road near Skylark Lane, Looking North (Corralitos: Visual Simulation)



11/6/2013

Santa Cruz 115-kV Reinforcement Project
Public Meeting

Source:
Draft IS/MND,
Figure 3.1-7 19

Arroyo Drive at Mark Avenue Looking Southwest (Green Valley: Before Proposed Project)



11/6/2013

Santa Cruz 115-kV Reinforcement Project
Public Meeting

Source:
Draft IS/MND,
Figure 3.1-8 20

Arroyo Drive at Mark Avenue Looking Southwest (Green Valley Visual Simulation)



11/6/2013

Santa Cruz 115-kV Reinforcement Project
Public Meeting

Source:
Draft IS/MND,
Figure 3.1-8 21

Pinto Lake County Park Looking East (Green Valley: Before Proposed Project)



11/6/2013

Santa Cruz 115-kV Reinforcement Project
Public Meeting

Source:
Draft IS/MND,
Figure 3.1-9 22

Pinto Lake County Park Looking East (Green Valley: Visual Simulation)



11/6/2013

Santa Cruz 115-kV Reinforcement Project
Public Meeting

Source:
Draft IS/MND,
Figure 3.1-9 23

Hames Road near Pleasant Valley Road Looking North (Pleasant Valley/Day Valley: Before Proposed Project)



11/6/2013

Santa Cruz 115-kV Reinforcement Project
Public Meeting

Source:
Draft IS/MND,
Figure 3.1-10₂₄

Hames Road near Pleasant Valley Road Looking North (Pleasant Valley/Day Valley: Visual Simulation)



11/6/2013

Santa Cruz 115-kV Reinforcement Project
Public Meeting

Source:
Draft IS/MND,
Figure 3.1-10₂₅

Jingle Lane near Day Valley Road Looking Southeast (Pleasant Valley/Day Valley: Before Proposed Project)



11/6/2013

Santa Cruz 115-kV Reinforcement Project
Public Meeting

Source:
Draft IS/MND,
Figure 3.1-11₂₆

Jingle Lane near Day Valley Road Looking Southeast (Pleasant Valley/Day Valley: Visual Simulation)



11/6/2013

Santa Cruz 115-kV Reinforcement Project
Public Meeting

Source:
Draft IS/MND,
Figure 3.1-11₂₇

Intersection of Day Valley Road and Cox Road (Cox-Freedom: Before Proposed Project)



11/6/2013

Santa Cruz 115-kV Reinforcement Project
Public Meeting

Source:
Draft IS/MND,
Figure 3.1-12₂₈

Intersection of Day Valley Road and Cox Road (Cox-Freedom: Visual Simulation)



11/6/2013

Santa Cruz 115-kV Reinforcement Project
Public Meeting

Source:
Draft IS/MND,
Figure 3.1-12₉

Intersection of Freedom and McDonald Boulevards (Cox-Freedom: Before Proposed Project)



11/6/2013

Santa Cruz 115-kV Reinforcement Project
Public Meeting

Source:
Draft IS/MND,
Figure 3.1-13₃₀

Intersection of Freedom and McDonald Boulevards (Cox-Freedom: Visual Simulation)



11/6/2013

Santa Cruz 115-kV Reinforcement Project
Public Meeting

Source:
Draft IS/MND,
Figure 3.1-13₃₁

Freedom Boulevard (Cox-Freedom: Before Proposed Project)



11/6/2013

Santa Cruz 115-kV Reinforcement Project
Public Meeting

Source:
Draft IS/MND,
Figure 3.1-14₃₂

Freedom Boulevard (Cox-Freedom: Visual Simulation)



11/6/2013

Santa Cruz 115-kV Reinforcement Project
Public Meeting

Source:
Draft IS/MND,
Figure 3.1-14₃₃

Key Environmental Issues - Biology

Biological Resources

- **Issues:** Monterey spineflower, other special status plants, sensitive habitats, and Monterey pine and oaks
- **Studies:** Surveys in project corridor – locations for tree removal identified
- **Analysis:** *Less than significant impacts with mitigation*
- **Mitigation**
 - No work in designated Critical Habitat
 - Avoid plants/habitat or implement Revegetation, Restoration, and Monitoring Plan
 - Replacement of Monterey pine and oaks
 - trees replaced off-site



11/6/2013

Santa Cruz 115-kV Reinforcement Project
Public Meeting

Key Environmental Issues - Biology

Biological Resources

- **Issues:** Special status animals – dusky-footed woodrat, bats, birds (including white-tailed kite and bald eagle)
- **Studies:** Habitat assessments for project corridor
- **Analysis:** *Less than significant impacts with mitigation*
- **Mitigation**
 - Woodrat - Pre-construction survey for woodrat houses; avoid woodrat houses or disassemble unavoidable woodrat houses
 - Bats - Assessment of suitable habitat; establishment of no-work exclusion area around roosting habitat
 - Birds - Tree removal preferred outside of nesting season; no removal of trees with active nests; no-work buffers around active nests; monitoring of nests



Santa Cruz 115-kV Reinforcement Project
Public Meeting

Key Environmental Issues-Biology

Biological Resources

- **Issue:** Santa Cruz long-toed salamander
- **Studies:** Detailed habitat assessment of all project work areas around and west of Corralitos Creek
- **Analysis:** *Less than significant impacts with mitigation*
 - USFWS/PG&E study will result in relocation of salamanders prior to start of project
- **Mitigation:**
 - Seasonal ground disturbance windows and fencing requirements
 - Limitations on vegetation and tree removal
 - No work in areas where salamanders have not been previously excluded
 - Surface barriers over burrows along access roads
 - Habitat restoration



Santa Cruz 115-kV Reinforcement Project
Public Meeting

11/6/2013

36

Key Environmental Issues -Geology

Geology and Soils

- **Issues:** Site stability on slopes and during seismic events; erosion
- **Analysis:** *Less than significant impacts with mitigation*
- **Mitigation:**
 - Stability - Geotechnical investigation and implementation of recommendations
 - Erosion – Implementation of construction best management practices and a stormwater pollution prevention plan (SWPPP)



Santa Cruz 115-kV Reinforcement Project
Public Meeting

11/6/2013

37

Key Environmental Issues-Hazards

Hazards and Hazardous Materials

- **Issues:** Release of fuels and other hazardous materials; increased fire risks
- **Analysis:** *Less than significant impacts with mitigation*
- **Mitigation:**
 - Hazardous material release: Environmental Training and Monitoring Program; Spill Prevention, Countermeasure and Control Plan; Hazardous Substance Control and Emergency Response Plan; Health and Safety Plan
 - Fire risks: Smoking is restricted; fire suppression equipment in construction vehicles; brush clearing from roads; lines would be maintained to minimize risk of breakage



Santa Cruz 115-kV Reinforcement Project
Public Meeting

11/6/2013

38

Key Environmental Issues-Noise

Noise

- **Issues:** Noise from construction equipment including helicopters
- **Analysis:** *Less than significant impacts with mitigation*
 - Temporary and intermittent
 - Activities generally between 7am and 5pm, Monday through Saturday
 - Helicopter flight altitude restrictions
- **Mitigation:**
 - Noise barrier for stationary equipment within 50 feet of residences



11/6/2013

Santa Cruz 115-kV Reinforcement Project
Public Meeting

Key Environmental Issues-Traffic

Transportation and Traffic

- **Issues:** Traffic congestion during construction; traffic and pedestrian safety hazards during construction and operation
- **Analysis:** *Potentially significant impacts with mitigation on traffic congestion during construction; Less than significant impacts on traffic safety during operation*
 - Replacement poles in same locations as existing poles
 - TSPs set back a minimum of 20 feet from roads
 - Some wood poles set back on Cox Road from current locations
- **Mitigation:**
 - A Traffic Management Plan will be prepared



Santa Cruz 115-kV Reinforcement Project
Public Meeting

11/6/2013

40

Key Environmental Issues- Air Qual.

Air Quality and Greenhouse Gases

- **Issues:** Generation of exhaust emissions, fugitive dust, and greenhouse gases
- **Studies:** Air pollutant and greenhouse gas emissions were modeled using CalEEMod 2011
- **Analysis:** *Less than significant impacts*
 - Criteria pollutant, greenhouse gas, and fugitive dust emissions below significance thresholds
 - Watering or stabilizing active construction areas, unpaved access roads, parking areas, and staging areas



11/6/2013

Santa Cruz 115-kV Reinforcement Project
Public Meeting

Electromagnetic Fields (EMF)

- Public interest regarding health effects from exposure to electric and magnetic fields from power lines
- Per CPUC policy, the IS/MND does not consider magnetic fields in the context of CEQA
 - Disagreement among scientists that EMF creates a potential health risk
 - No defined or adopted CEQA standards for defining health risk from EMF
- The CPUC requires utilities to incorporate “low-cost” or “no-cost” measures to mitigate EMF from new or upgraded electrical utility facilities up to approximately 4 percent of total project cost.



Santa Cruz 115-kV Reinforcement Project
Public Meeting

11/6/2013

42

Public Participation

- A Draft Mitigated Negative Declaration (MND) was published and distributed for review beginning on October 18, 2013.
- *The review period has been extended from required minimum 30 days to 45 days.*
- The public review period ends on December 2, 2013.
- The Final MND will address public comments.
- CPUC Commissioners will consider the Final MND in deciding whether to grant the PTC.



11/6/2013

Santa Cruz 115-kV Reinforcement Project
Public Meeting

Ways to Comment

- Oral comments and questions tonight
- Fill out a comment card to submit comments and questions tonight
- Submit comments after this meeting by mail, fax, or email

Mail	Fax	Email
Lisa Orsaba CPUC c/o Panorama One Embarcadero Center, Suite 740 San Francisco, CA 94111	(650) 373-1211	santacruz115kvproject@ panoramaenv.com

- Comments due by 5:00 p.m. on **December 2, 2013**



11/6/2013

Santa Cruz 115-kV Reinforcement Project
Public Meeting

For More Information

- Check website (digital IS/MND, other documents)
 - http://www.cpuc.ca.gov/environment/info/panoramaenv/SantaCruz_115kVReinforcement/SantaCruz_115%20Reinforcement%20Project.html
 - Search for “cpuc santa cruz reinforcement” online
- Project email
 - santacruz115kvproject@panoramaenv.com
- Project voicemail
 - (650) 373-1200
- Local Information repositories (hard copy IS/MND)
 - Aptos Branch Library
7695 Soquel Drive
Aptos, CA 95003
 - Freedom Branch Library
2021 Freedom Boulevard
Freedom, CA 95019



Santa Cruz 115-kV Reinforcement Project
Public Meeting

Comment Guidelines

- State name and affiliation
- One person speaks at a time
- Avoid side conversations
- Keep input concise (to maximize participation)
- Respect others' opinions/interests



11/6/2013

Santa Cruz 115-kV Reinforcement Project
Public Meeting