



Nest Buffer Reduction Request 2018 #5

To: Billie Blanchard, California Public Utilities Commission (CPUC)

Cc: Sheila Hoyer (Panorama), Susanne Heim (Panorama)

Subject: Mitigation Measure (MM) Biology-7 Nest Buffer Reduction Request

From: Amy Trexler, Qualified Biologist

Date: 05/17/2018

In accordance with MM Biology-7 of the Sycamore-Peñasquitos 230 kV Transmission Line Project (Project) San Diego Gas & Electric (SDG&E) is requesting a nesting bird buffer reduction to accommodate ongoing construction activities associated with construction of the Project. If granted, the duration of this buffer reduction would be effective until construction activities are complete within the reduced buffer or the nest becomes inactive, whichever occurs sooner.

One new common bird species nest has been identified inside the Stonebridge Staging Yard. The nest was observed during an inspection of the area in anticipation of the ARB construction trailer being hauled offsite. The attached table contains the following information for the recorded nest SDG&E is requesting a buffer reduction for:

- Species
- Location
- Pre-existing conditions present on site
- Description of the work to be conducted within the reduced buffer
- Size and expected duration of proposed buffer reduction
- Reason for the buffer reduction

Also, attached please find a map showing the location of the documented nest, the standard nest buffer limits identified in MM Biology-7, and the reduced buffer limits being recommended by the Qualified Biologist. The biologist has established a buffer around the nest to prevent any direct disturbance to the nest.

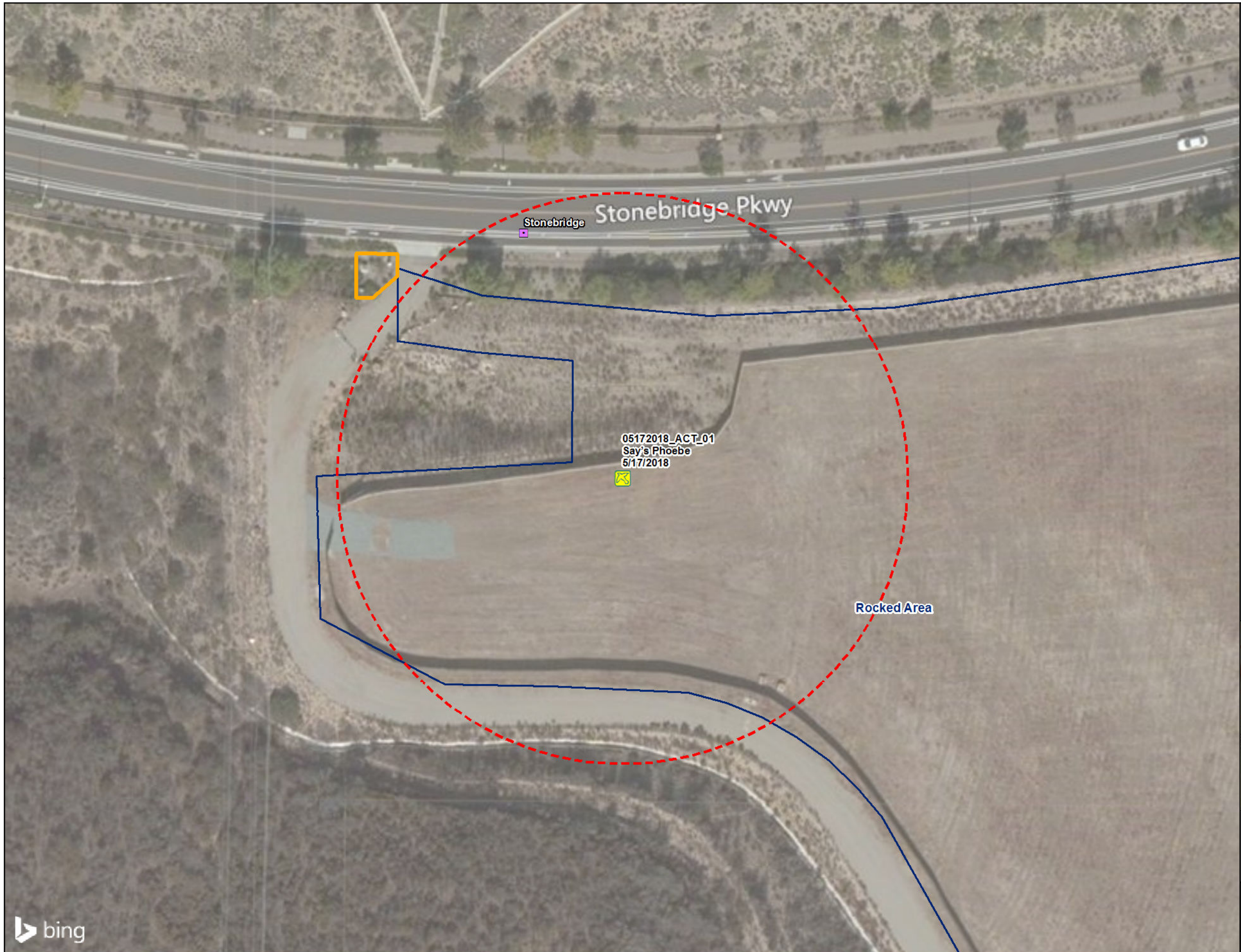
As this nest was found in an active construction area, SDG&E has implemented the buffer reduction recommended by the Qualified Biologist. The nest will be monitored on a daily basis during construction activities. If the buffer request is denied, or the Qualified Biologist determines that the nesting bird(s) are not tolerant of ongoing project activities, the specified buffer(s) listed in MM Bio-7 will be implemented. Additionally, removal of the trailer from the staging yard will be postponed until the nest is no longer active.

If you have any questions regarding the details of this request, please contact the Qualified Biologist making the buffer reduction request at the contact information below:

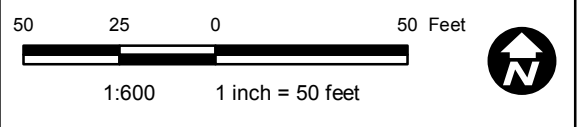
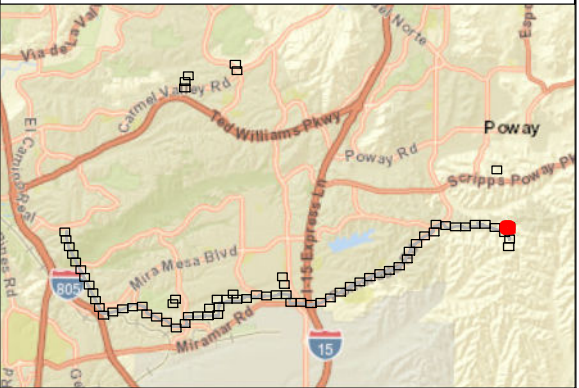
Amy Trexler
C: 315-263-7005
atrexler@balkbiological.com
Balk Biological, Inc.
322 Encinitas Blvd. #290
Encinitas, CA 92024

Sycamore to Peñasquitos 230 kV Transmission Line Project Nesting Bird Buffer Reduction Request
 Date: 5/17/2018

Nest Information									Buffer Reduction Request						
Nest ID ¹	Species ²	Listing Status ³	Nest Stage ⁴	Observation Notes ⁵	Latitude (decimal degrees)	Longitude (decimal degrees)	Estimated Fledge Date	Nesting Bird Behavior	Standard Buffer	Reduced Buffer Necessary for Construction	Pre-Existing Conditions Onsite	Reason for Buffer Reduction/Biologist Recommendation	Duration of Buffer Reduction	Work Activity Description	Monitoring Approach
05172018_ACT_01	Say's Phoebe (SAPH)	Common	Egg Laying	Observed female flying in and out of the nest location. One egg present inside the nest and female is in the egg dropping stage. Nest is located in the bottom corner of the ARB construction trailer. No evidence of disruption of nesting activity from construction was observed.	32.92157	-117.03140	June 21, 2018 Standard incubation is 12-18 days; standard nestling period is 13-21 days	Appears tolerant of human activity.	150 feet	0 feet (Signage will be placed on or near the construction trailer to alert workers to nest location).	Nest is located underneath the ARB construction trailer in the NW corner.	Nest is located in an active construction yard. Birds have been exposed to high levels of noise and human activity. Recommendation is to approve buffer with daily monitoring for duration of construction or until nest becomes inactive.	For entire duration of proposed work during nesting season (5/17/2018- 8/31/2018), or until nest is no longer active.	Construction activities include staging of equipment and materials in support of ongoing construction activities. Buffer reduction is being requested to allow continued staging within an active yard.	<p>Nests will be monitored during daytime construction when work activity and noise levels are high in order to best determine the birds' noise tolerance. Monitoring will occur from a distance using binoculars or a spotting scope whenever possible to minimize nest disturbance. If nest cannot be adequately monitored from a distance, the CPUC qualified biologists (qualified biologist) will approach the nest to gather nest data. When approaching a nest, the qualified biologist will first determine whether there are any potential nest predators nearby, such as raptors, corvids, jays, and brown-headed cowbirds. If no predators are observed, the qualified biologist will approach the nest and collect nest data. The qualified biologist will observe the nest for a sufficient amount of time based on their professional judgment (usually between 30-60 minutes if an adult is not immediately observed on the nest) to determine nest status and will record the nest status (e.g., nest building, incubating, nestlings, etc.), and observe avian behavior (carrying food, agitation or distress, etc.). If the qualified biologist is unable to make a determination on nest status and has not detected the nest pair in the vicinity of the nest, the qualified biologist will continue to monitor the nest daily for a period of 5 days. If the qualified biologist is not able to determine nest status after 5 days due to lack of activity at the nest (including the observation of fledgling groups in the vicinity of the nest), the biologist will determine the nest is no longer active. The qualified biologist will gather appropriate nest data to allow proper documentation of nest stage and recommended buffer effectiveness. The qualified biologist will make assessments based on their experience, professional judgment and the following considerations: incubation period and nestling period (i.e., fledge date) of species, geographic location, existing ambient conditions (human activity such as traffic, jet noise, rail noise, etc.), type and extent of construction within nest buffer, visibility of construction to nest, and other environmental factors such as the species' site-specific level of habituation to disturbance. The nest buffers will be increased or reinstated if there are signs of significant disturbance and risk of project-induced nest abandonment consistent with MM Biology-7.</p>



- Legend**
- Bird Nests**
 - Tracking**
 - Active
 - Standard Bird Nest Buffers**
 - 150 ft
 - Entrance Points
 - Staging Yard
 - MPR 3 - Temporary Work Space



**Sycamore to Peñasquitos
230kV Transmission Line Project
Nesting Bird Survey**

