

## PROJECT MEMORANDUM SYCAMORE-PEÑASQUITOS 230-KV TRANSMISSION LINE PROJECT

Date: July 20, 2017  
To: Billie Blanchard, CPUC Project Manager  
From: Sheila Hoyer, CPUC Monitoring Supervisor  
**Subject:** Weekly Report #28 – July 9 to July 15, 2017

---

### INTRODUCTION

This report provides a summary of the construction and compliance activities associated with the SDG&E Sycamore-Peñasquitos 230-kV Transmission Line Project for the week of July 9 to July 15, 2017.

A summary of the Notices to Proceed, Minor Project Refinement, and Temporary Extra Workspace Requests are provided in Tables 1, 2, and 3, respectively. A summary of Non-compliance, Project Memoranda and Incidents is provided in Table 4. Daily Inspection Reports are provided in Appendix A.

**CPUC/Panorama Environmental Monitors (EMs): Jerry Scott and Korey Klutz**

### STAGING YARDS

#### Summary of Activity:

##### Stonebridge Staging Yard:

1. Delivering materials and equipment, and maintaining BMPs.

##### Driving Range Staging Yard:

1. Maintaining BMPs, and delivering materials and equipment.

##### Vulcan Staging Yard:

1. Installing perimeter fence, installing BMPs and delivering materials and equipment.  
Delivering and removing spoil material from night excavations.

##### Underground Transmission Line:

1. Nighttime construction occurred in Segment 5 along Sections 8 through 14 (approximately at Stations 134+00 to 245+00). Activities included saw cutting for trenches and vaults, installing vaults and conduit, potholing to locate existing utilities, laying asphalt, maintaining BMPs, and installing storm drain inlet protection.

2. Daytime construction occurred in Segment 5 in Sections 1 through 3. Activities included saw cutting for trenches and vaults, potholing to locate existing utilities, maintaining BMPs, and installing storm drain inlet protection. Surveying work occurred east of I-15 along Segment 3 (approximately at Stations 414+00 to 618+00).

**Overhead Transmission Line:**

1. Construction at cable pole area PO3 began on July 11, 2017 and included installation of BMPs and vegetation clearing from the work area. Initial grading activities began after vegetation was cleared.

**Environmental Compliance:**

1. All pavement was kept clean during this reporting period. No winds occurred that were higher than 20 mph. All off-road diesel-powered construction equipment used on the Project met a minimum of EPA Tier 3 standards.
2. Monitoring for special-status species and inspections for wildlife was implemented to avoid and minimize impacts to biological resources. Nest surveys were conducted on July 10 through 14, 2017, in areas for anticipated construction. No nest monitoring occurred during this reporting period. All project equipment arrived clean and free of mud and/or vegetation.
3. During this reporting period, archaeological, Native American, and paleontological monitoring of vault excavations and trenching occurred in areas of high potential for paleontologically sensitive deposits and archaeological resources. Under the direction of the CPUC-approved archaeologist, spot checking by archaeological and Native American monitors occurred in the trench excavations which were in disturbed soil/fill material where the potential to encounter historical or archaeological resources was low. Cultural monitoring teams will continue spot-checking, and if the soil composition changes, full-time monitoring may be recommended by the CPUC-approved archeologist. Cultural monitoring teams monitored vegetation clearing undertaken for overhead work, as well as demarcated cultural environmentally sensitive areas along the overhead alignment. Paleontological monitoring of vegetation clearing was not recommended by the Qualified Paleontologist. Site P-37-033557 (old Highway 395) continued to be observed during trenching activities at the vault located at station 455+75. The CPUC-approved archaeological monitor documented the resource as recommended by the CPUC-approved cultural resources specialist/archaeologist.
4. On July 10, 2017, approximately 3-4 ounces of hydraulic fluid were released from a jack hammer attachment on a tracked excavator. The release was contained to the asphalt and was cleaned up with absorbent pads which were stored in an on-site hazardous waste drum. No other hazardous materials releases occurred.
5. Daytime construction activities were confined to Monday through Friday, and occurred between 8:30 am and 3:30 pm, and on Saturday from 8:00 am to 4:30 pm, consistent with the City of San Diego-approved Traffic Control Permits. A noise permit was obtained from the City of San Diego for nighttime construction activities. Nighttime construction activities were confined to Sunday through Thursday, and occurred between 9:00 pm and 5:00 am.

6. Project personnel parked their personal vehicles within a designated personal vehicle parking area within the project limits within the Stonebridge Staging Yard. Workers parked within the work limits of the Driving Range Staging Yard or parked on the adjacent public street. On July 12, 2017, Traffic Control Permit extensions were provided by the City of San Diego for vault and trenching work between stations 433+00 to 471+43 for the period of July 17, 2017 to July 21, 2017. On July 12, 2017, the City of San Diego also provided a Traffic Control Permit for work between stations 433+00 to 471+34 for July 15, 2017.
7. The QSP conducted daily inspections during this reporting period. A vacuum was used to collect excess water and a street sweeper was used to clean up excess sediment/dust during sawcutting activities. All equipment staged along the ROW and stored in the staging yards had drip pans in place to capture oil drips/leaks. BMP installation occurred around the overhead work site at PO3. All trash facilities were covered daily.
8. All construction and compliance personnel on site during this reporting period completed the Project Safety and Environmental Awareness Program (SEAP). To date, approximately 913 Project personnel have received the required SEAP training, and 800 Project personnel have received the UXO training.
9. There were no compliance level incidents documented during this reporting period.
10. No public complaints were received during this reporting period.

**Agency Representatives during Construction (other than CPUC EMs):** None

### CPUC NOTICES TO PROCEED (NTPs)

Table 1 summarizes the CPUC NTP activity for the SDG&E Sycamore-Peñasquitos 230-kV Transmission Line Project to date.

**Table 1 CPUC NTPs**

NTP #	Date Submitted	Date Issued	Segment #	Description
1	12/05/16	12/29/16	N/A	Mobilize and begin operations at the construction staging yards.
2	01/23/17	02/07/17	Segment B	Construct the underground portion of the Project from Sycamore Substation to Structure P03, and from Structure P05 to Structure CC MM CP.
3	02/03/17	02/27/17	Segment A Segment C	1. Overhead construction from Sycamore Substation to Structure P06 2. Overhead construction from Structure CC MM CP to the Peñasquitos Substation 3. Deepwell AC mitigation installation 4. Construction activities at Sycamore Canyon and Peñasquitos Substations

## MINOR PROJECT REFINEMENT & TEMPORARY EXTRA WORKSPACE REQUESTS

Tables 2 and 3 summarize the Minor Project Refinements (MPRs) and Temporary Extra Workspace (TEWS) Requests have been submitted to date.

**Table 2** Minor Project Refinement (MPR) Requests

MPR Request	Date Submitted	Date Issued	Segment #	Description
#1	12/06/16	1/11/17	Segment A	Underground 230-kV getaway from Sycamore Substation to Structure P03.
#2	01/17/17	01/24/17	Segment B	Realignment of the 230-kV underground transmission line from Miramar Road north on Black Mountain Road and west on Activity Road.
#3	03/06/17	03/08/17	Segment A	Provides temporary power to the SDG&E trailer at the Stonebridge Staging Yard through the existing power box located outside of the existing Project boundary.
#4	04/18/17	04/20/17	Segment B	Modifies the approved 2.61-acre Vulcan Mine Yard location approximately 884 feet to the west to an approximately 1.71-acre paved area.

**Table 3** Temporary Extra Workspace (TEWS) Requests

TEWS Request	Date Submitted	Date Issued	Segment #	Description
#1	06/29/17	07/05/17	B	Additional staging area located at the southwest corner of the intersection of Pomerado Road and Avenue of Nations

## NON-COMPLIANCES, PROJECT MEMORANDA & INCIDENTS

There were no non-compliances, memoranda or incidents during this reporting period.

**Table 4** Non-Compliances, Project Memoranda, and Other Incidents

Type	Date	Location	Description
Level 1	04/12/2017	Segment B	Potable water was used in a street sweeper
Memoranda	04/19/2017	Segment B	Traffic incident at Driving Range Staging Yard
Level 1	04/24/2017	Segment B	Presence of trash along the project alignment
Level 1	05/01/2017	Segment B	Working outside of City-approved hours
Memoranda	05/03/2017	Segment B	Traffic incident at Snapple/7-Up Plant
Memoranda	05/18/2017	Segment B	Traffic incident at Station 169+89
Level 1	06/08/2017	Segment B	Non-adherence to approved Fire Plan
Level 2	06/15/2017	Segment B	Non-adherence to approved Fire Plan

Type	Date	Location	Description
Memoranda	07/06/2017	Segment B	Traffic incident at Carroll Canyon Road

## **ATTACHMENT A INSPECTION REPORTS**

---

# 2017-07-10 AM Inspection Report

## SDG&E Sycamore-Peñasquitos 230-kV Transmission Line Project: Daily Inspection Report

Inspection Date	2017-07-10
Start Time	09:00:00
End Time	12:45:00
Monitor Name	Korey Klutz
Organization	The Sanberg Group (Sanberg)
Summary of Construction Activities	Daytime work; east of I-15 Vault work and Vault excavation, sawcutting and potholing, no trenching yet.  Overhead work; clearing and grubbing vegetation at CCM MCP and tomorrow moving to PO3 for clearing and grubbing
Summary of Compliance Activities	LEI and all required monitors were onsite at active construction sites ensuring compliance. Traffic control measures were implemented as approved. All work was performed within approved ROW/work areas.  I drove the entire active work area from 805/Carrol Canyon interchange to the Stonebridge yard. Traffic was flowing smoothly. Maximum wait times were 3 minutes.
Were any issues encountered?	No

### Photo Log

Photo



Caption Mulching at CCCMP  
Photo Attributes Capture Date/Time: Mon Jul 10 2017 11:31:18 GMT-0700 (PDT)  
Coordinates: 33.134508, -117.190868  
View Direction: North

Photo



Caption Fire equipment

Photo Attributes Capture Date/Time: Mon Jul 10 2017 10:54:32 GMT-0700 (PDT)  
Coordinates: 32.898264, -117.103561  
View Direction: South

Photo



Caption Site storage and prep work for vault, Pomerado Road.

Photo Attributes Capture Date/Time: Mon Jul 10 2017 10:51:41 GMT-0700 (PDT)  
Coordinates: 32.896948, -117.104200  
View Direction: West



Photo



Caption BMPS and Traffic on Pomerado Road.

Photo Attributes Capture Date/Time: Mon Jul 10 2017 10:48:47 GMT-0700 (PDT)  
Coordinates: 32.897417, -117.103531  
View Direction: West

Photo



Caption Vault work on Pomerado Road.

Photo Attributes Capture Date/Time: Mon Jul 10 2017 10:45:27 GMT-0700 (PDT)  
Coordinates: 32.898055, -117.101760  
View Direction: Southwest

Photo



Caption Traffic control at Ave. of Nations and Pomerado Rd.

Photo Attributes Capture Date/Time: Mon Jul 10 2017 10:43:37 GMT-0700 (PDT)  
 Coordinates: 32.897790, -117.102472  
 View Direction: West

### Daily Checklist

<p>Q1 – General Avoidance and Minimization: (a) Were the limits of work areas and access roads clearly marked? (b) Were construction activities limited to CPUC-approved work areas?</p>	Met Requirements
<p>Q2 – Air Quality/GHG: (a) Were dust avoidance and minimization requirements implemented and monitored adequately? (b) Was dust generation below required thresholds? (c) Were equipment and vehicles maintained and operated in a manner to limit emissions? (d) Was organic waste collected and separated from non-organic waste for appropriate composting or recycling, as appropriate?</p>	Met Requirements
<p>Q3 – Special-Status Plants: Were impact avoidance and minimization requirements for special-status plants implemented adequately (e.g., avoiding sensitive areas)?</p>	N/A
<p>Q4 – Wildlife (Non-Avian): Were impact avoidance and minimization requirements for wildlife implemented adequately (e.g., avoiding sensitive areas, covering excavations, and inspecting equipment/trenches)?</p>	Met Requirements
<p>Q4 Notes</p>	
<p>Q5 – Nesting and Burrowing Birds: (a) Were active nests and occupied burrows identified and monitored during applicable seasons, as required? (b) Were impact avoidance and minimization requirements for any active nests or occupied burrows implemented adequately?</p>	N/A
<p>Q5 Notes</p>	No active nests located near work areas.
<p>Q6 – Water Features and Aquatic Habitat: Were water features avoided?</p>	N/A
<p>Q7 – Stormwater, Erosion, and Sediment Control: (a) Were erosion and sediment control BMPs in place and functioning properly? (b) Were inactive or completed work areas stabilized and/or restored adequately?</p>	Met Requirements
<p>Q7 Notes</p>	BMPS were installed within the active ROW.
<p>Q8 – Invasive Weed Control: Were procedures to prevent the spread of invasive weeds implemented adequately?</p>	Met Requirements
<p>Q8 Notes</p>	Mulching and grubbing included removal of invasives from the ROW.
<p>Q9 – Hazardous Materials and Waste Management: (a) Were hazardous materials stored and labeled properly? (b) Was hazardous material waste disposed of appropriately? (c) Were any spills or leaks addressed adequately? (d) Was solid waste collected and disposed of adequately?</p>	Met Requirements
<p>Q9 Notes</p>	Met requirement, note that road surfaces were in great shape. Less

	asphalt debris than typical.
Q10 – Fire Management: (a) Were fire prevention procedures in place? (b) Was firefighting equipment available on site?	Met Requirements
Q10 Notes	All vehicles inspected contained necessary tools.
Q11 – Cultural, Paleontological, and Tribal Resources: (a) Were cultural, paleontological, and tribal resources monitoring and impact avoidance occurring as required? (b) If potential resources or human remains were inadvertently discovered, were response procedures and protocols implemented as required?	Met Requirements
Q11 Notes	Monitors on site at active work areas.
Q12 – Construction Noise: (a) Were noise minimization measures in place, as required? (b) If noise complaints were received, were they documented and addressed, as required?	Met Requirements
Q13 – Maintain Access: (a) Was access to driveways (e.g., businesses, schools, residences) maintained as required? (b) Was access to recreational areas maintained and appropriate signage installed? (c) Was pedestrian and bicycle access maintained, or were detours clearly defined?	Met Requirements
Q14 – Traffic Control (a) Were flaggers present at all times? (b) Were barriers, cones, and signs in place? (c) Were detours clearly marked?	Met Requirements
Q15 – Helicopter Use (a) Were helicopter use restrictions implemented adequately? (b) Were helicopter take-off and landing sites within prescribed limits?	N/A
Q16 – Worker Training and Communication: Have all workers on site received the required environmental trainings for the project?	Met Requirements
Q17 – MMCRP Implementation: (a) Were project activities consistent with the approved project as defined in the EIR and subsequent CPUC authorizations? (b) Were MMCRP procedures implemented adequately?	Met Requirements

# 2017-07-11 AM Inspection Report

## SDG&E Sycamore-Peñasquitos 230-kV Transmission Line Project: Daily Inspection Report

Inspection Date	2017-07-11
Start Time	09:00:00
End Time	12:31:00
Monitor Name	Korey Klutz
Organization	The Sanberg Group (Sanberg)
Summary of Construction Activities	Vault excavation, and potholing on Pomerado Road near the intersection of Avenue of Nations.
Summary of Compliance Activities	LEI and monitors were onsite ensuring compliance. All work was conducted within CPUC approved limits.
Were any issues encountered?	No

### Photo Log

Photo



Caption Traffic stoppage time for east-bound traffic (approximately 35 vehicles in line)

Photo Attributes Capture Date/Time: Tue Jul 11 2017 11:58:57 GMT-0700 (PDT)  
Coordinates: 32.895926, -117.107309  
View Direction: West

Photo



Caption Traffic stoppage time at eastern end of Pomerado Road vault.

Photo Attributes Capture Date/Time: Tue Jul 11 2017 11:48:03 GMT-0700 (PDT)  
Coordinates: 32.898496, -117.101061  
View Direction: West

Photo



Caption Excavation and paleo monitoring on Pomerado Road.

Photo Attributes Capture Date/Time: Tue Jul 11 2017 11:42:37 GMT-0700 (PDT)  
Coordinates: 32.898125, -117.101769  
View Direction: South

Photo



Caption Fire tools and fire technician onsite at Pomerado Road vault excavation.  
Photo Attributes Capture Date/Time: Tue Jul 11 2017 11:40:51 GMT-0700 (PDT)  
Coordinates: 32.897831, -117.102360  
View Direction: Southeast

Photo



Caption Excavation on Pomerado Road.  
Photo Attributes Capture Date/Time: Tue Jul 11 2017 11:40:21 GMT-0700 (PDT)  
Coordinates: 32.897826, -117.102354  
View Direction: East

Photo



Caption Traffic control and potholing on Ave Nations/Pomerado Road intersection.

Photo Attributes Capture Date/Time: Tue Jul 11 2017 11:39:36 GMT-0700 (PDT)  
 Coordinates: 32.897808, -117.102339  
 View Direction: West

Photo



Caption Stonebridge Yard entrance.

Photo Attributes Capture Date/Time: Tue Jul 11 2017 11:39:03 GMT-0700 (PDT)  
 Coordinates: 32.897867, -117.102435  
 View Direction: East

**Daily Checklist**

Q1 – General Avoidance and Minimization: (a) Were the limits of work areas and access roads clearly marked? (b) Were construction activities limited to CPUC-approved work areas?

Met Requirements

Q1 Notes

LEI and monitors were onsite ensuring compliance. All work was completed with designated/approved work limits.

Q2 – Air Quality/GHG: (a) Were dust avoidance and minimization requirements implemented and monitored adequately? (b) Was dust generation below required thresholds? (c) Were equipment and vehicles maintained and operated in a manner to limit emissions? (d) Was organic waste collected and separated from non-organic waste for appropriate composting or recycling, as appropriate?	Met Requirements
Q3 – Special-Status Plants: Were impact avoidance and minimization requirements for special-status plants implemented adequately (e.g., avoiding sensitive areas)?	N/A
Q4 – Wildlife (Non-Avian): Were impact avoidance and minimization requirements for wildlife implemented adequately (e.g., avoiding sensitive areas, covering excavations, and inspecting equipment/trenches)?	Met Requirements
Q5 – Nesting and Burrowing Birds: (a) Were active nests and occupied burrows identified and monitored during applicable seasons, as required? (b) Were impact avoidance and minimization requirements for any active nests or occupied burrows implemented adequately?	N/A
Q5 Notes	No nest within work site vicinity.
Q6 – Water Features and Aquatic Habitat: Were water features avoided?	N/A
Q7 – Stormwater, Erosion, and Sediment Control: (a) Were erosion and sediment control BMPs in place and functioning properly? (b) Were inactive or completed work areas stabilized and/or restored adequately?	Met Requirements
Q8 – Invasive Weed Control: Were procedures to prevent the spread of invasive weeds implemented adequately?	Met Requirements
Q9 – Hazardous Materials and Waste Management: (a) Were hazardous materials stored and labeled properly? (b) Was hazardous material waste disposed of appropriately? (c) Were any spills or leaks addressed adequately? (d) Was solid waste collected and disposed of adequately?	Met Requirements
Q10 – Fire Management: (a) Were fire prevention procedures in place? (b) Was firefighting equipment available on site?	Met Requirements
Q10 Notes	Fire tools and fire technician on site.
Q11 – Cultural, Paleontological, and Tribal Resources: (a) Were cultural, paleontological, and tribal resources monitoring and impact avoidance occurring as required? (b) If potential resources or human remains were inadvertently discovered, were response procedures and protocols implemented as required?	Met Requirements
Q11 Notes	Monitors were actively monitoring excavation along Pomerado Road.
Q12 – Construction Noise: (a) Were noise minimization measures in place, as required? (b) If noise complaints were received, were they documented and addressed, as required?	Met Requirements
Q13 – Maintain Access: (a) Was access to driveways (e.g., businesses, schools, residences) maintained as required? (b) Was access to recreational areas maintained and appropriate signage installed? (c) Was pedestrian and bicycle access maintained, or were detours clearly defined?	Met Requirements
Q14 – Traffic Control (a) Were flaggers present at all times? (b) Were barriers, cones, and signs in place? (c) Were detours clearly marked?	Met Requirements
Q14 Notes	Traffic was flowing, wait times were approximately 2-4 minutes.
Q15 – Helicopter Use (a) Were helicopter use restrictions implemented adequately? (b) Were helicopter take-off and landing sites within prescribed limits?	N/A
Q16 – Worker Training and Communication: Have all workers on site received the required environmental trainings for the project?	Met Requirements
Q17 – MMCRP Implementation: (a) Were project activities consistent with the approved project as defined in the EIR and subsequent CPUC authorizations? (b) Were MMCRP procedures implemented adequately?	Met Requirements



# 2017-07-12 AM Inspection Report

## SDG&E Sycamore-Peñasquitos 230-kV Transmission Line Project: Daily Inspection Report

Inspection Date	2017-07-12
Start Time	09:00:00
End Time	14:45:00
Monitor Name	Korey Klutz
Organization	The Sanberg Group (Sanberg)
Summary of Construction Activities	Work included vault excavation on Pomerado and brushing/grubbing at P03.
Summary of Compliance Activities	LEI and monitors were on-site at each active project site. This included bio, paleo, cultural and Native American monitors at P03 and paleo, cultural and Native American at the Pomerado Rd. vault site.
Were any issues encountered?	No

### Photo Log

Photo



Caption Pomerado Rd. post work vault site

Photo Attributes Capture Date/Time: Wed Jul 12 2017 14:31:05 GMT-0700 (PDT)  
Coordinates: 32.885179, -117.167611  
View Direction: East

Photo



Caption Intersection Ave Nations and Pomerado Rd. post work, traffic control removed

Photo Attributes Capture Date/Time: Wed Jul 12 2017 14:30:06 GMT-0700 (PDT)  
Coordinates: 32.885179, -117.167611  
View Direction: South

Photo



Caption Environmental sign along P03 access road

Photo Attributes Capture Date/Time: Wed Jul 12 2017 10:08:51 GMT-0700 (PDT)  
Coordinates: 32.885126, -117.167604  
View Direction: North

Photo



Caption P03 site

Photo Attributes Capture Date/Time: Wed Jul 12 2017 10:08:02 GMT-0700 (PDT)  
Coordinates: 32.885131, -117.167636  
View Direction: West

Photo



Caption BMPs at 0P3

Photo Attributes Capture Date/Time: Wed Jul 12 2017 22:07:18 GMT-0700 (PDT)  
Coordinates: 32.885140, -117.167626  
View Direction: East

Photo



Caption Monitors at OP3 site

Photo Attributes Capture Date/Time: Wed Jul 12 2017 10:06:37 GMT-0700 (PDT)  
Coordinates: 32.885113, -117.167587  
View Direction: West

Photo



Caption UXO consultant and sample UXO

Photo Attributes Capture Date/Time: Thu Jul 13 2017 00:05:52 GMT-0700 (PDT)  
Coordinates: 32.885148, -117.167635  
View Direction: West

Photo



Water buffalo at 0P3

Photo Attributes Capture Date/Time: Wed Jul 12 2017 10:05:14 GMT-0700 (PDT)  
Coordinates: 32.885140, -117.167613  
View Direction: North

Photo



P03 clearing and grubbing...with silt fence in background.

Photo Attributes Capture Date/Time: Wed Jul 12 2017 10:03:44 GMT-0700 (PDT)  
Coordinates: 32.885103, -117.167619  
View Direction: West

Photo



Caption Fire tools at P03 site.

Photo Attributes Capture Date/Time: Wed Jul 12 2017 22:03:04 GMT-0700 (PDT)  
 Coordinates: 32.885103, -117.167619  
 View Direction: East

**Daily Checklist**

Q1 – General Avoidance and Minimization: (a) Were the limits of work areas and access roads clearly marked? (b) Were construction activities limited to CPUC-approved work areas?	Met Requirements
Q1 Notes	All work was done within CPUC-approved work limits
Q2 – Air Quality/GHG: (a) Were dust avoidance and minimization requirements implemented and monitored adequately? (b) Was dust generation below required thresholds? (c) Were equipment and vehicles maintained and operated in a manner to limit emissions? (d) Was organic waste collected and separated from non-organic waste for appropriate composting or recycling, as appropriate?	Met Requirements
Q3 – Special-Status Plants: Were impact avoidance and minimization requirements for special-status plants implemented adequately (e.g., avoiding sensitive areas)?	Met Requirements
Q4 – Wildlife (Non-Avian): Were impact avoidance and minimization requirements for wildlife implemented adequately (e.g., avoiding sensitive areas, covering excavations, and inspecting equipment/trenches)?	Met Requirements
Q5 – Nesting and Burrowing Birds: (a) Were active nests and occupied burrows identified and monitored during applicable seasons, as required? (b) Were impact avoidance and minimization requirements for any active nests or occupied burrows implemented adequately?	Met Requirements
Q6 – Water Features and Aquatic Habitat: Were water features avoided?	N/A
Q7 – Stormwater, Erosion, and Sediment Control: (a) Were erosion and sediment control BMPs in place and functioning properly? (b) Were inactive or completed work areas stabilized and/or restored adequately?	Met Requirements
Q8 – Invasive Weed Control: Were procedures to prevent the spread of invasive weeds implemented adequately?	Met Requirements
Q9 – Hazardous Materials and Waste Management: (a) Were hazardous materials stored and labeled properly? (b) Was hazardous material waste disposed of appropriately? (c) Were any spills or leaks addressed adequately? (d) Was solid waste collected and disposed of adequately?	Met Requirements
Q10 – Fire Management: (a) Were fire prevention procedures in place? (b) Was firefighting equipment available on site?	Met Requirements
Q10 Notes	Fire tools observed on all vehicles within the work areas
Q11 – Cultural, Paleontological, and Tribal Resources: (a) Were cultural, paleontological, and tribal resources monitoring and impact avoidance occurring as required? (b) If potential resources or human remains were inadvertently discovered, were response procedures and protocols implemented as required?	Met Requirements
Q11 Notes	Monitors were onsite at required work sites

Q12 – Construction Noise: (a) Were noise minimization measures in place, as required? (b) If noise complaints were received, were they documented and addressed, as required?	Met Requirements
Q13 – Maintain Access: (a) Was access to driveways (e.g., businesses, schools, residences) maintained as required? (b) Was access to recreational areas maintained and appropriate signage installed? (c) Was pedestrian and bicycle access maintained, or were detours clearly defined?	Met Requirements
Q14 – Traffic Control (a) Were flaggers present at all times? (b) Were barriers, cones, and signs in place? (c) Were detours clearly marked?	Met Requirements
Q15 – Helicopter Use (a) Were helicopter use restrictions implemented adequately? (b) Were helicopter take-off and landing sites within prescribed limits?	N/A
Q16 – Worker Training and Communication: Have all workers on site received the required environmental trainings for the project?	Met Requirements
Q17 – MMCRP Implementation: (a) Were project activities consistent with the approved project as defined in the EIR and subsequent CPUC authorizations? (b) Were MMCRP procedures implemented adequately?	Met Requirements

# 2017-07-12 PM Inspection Report

## SDG&E Sycamore-Peñasquitos 230-kV Transmission Line Project: Daily Inspection Report

Inspection Date	2017-07-12
Start Time	21:00:00
End Time	23:59:00
Monitor Name	Korey Klutz
Organization	The Sanberg Group (Sanberg)
Summary of Construction Activities	Large effort tonight. Construction was spread out between Carroll Rd/Crestmar Pt intersection all the way east to Miraloni Dr.
Summary of Compliance Activities	LEI and monitors were onsite ensuring compliance. All work was completed within CPUC-approved work limits.
Were any issues encountered?	No

### Photo Log

Photo



Caption Excavation Camino Ruiz

Photo Attributes Capture Date/Time: Wed Jul 12 2017 23:39:36 GMT-0700 (PDT)  
Coordinates: 32.887146, -117.167308  
View Direction: South



Photo



Caption Concrete work on Carrol near Crestmar Pt.

Photo Attributes Capture Date/Time: Wed Jul 12 2017 23:32:05 GMT-0700 (PDT)  
Coordinates: 32.885183, -117.169589  
View Direction: East

Photo



Caption Crane and vault installation

Photo Attributes Capture Date/Time: Wed Jul 12 2017 23:11:55 GMT-0700 (PDT)  
Coordinates: 32.888613, -117.165608  
View Direction: West

Photo



Caption Work on Trade street and railroad intersection.

Photo Attributes Capture Date/Time: Wed Jul 12 2017 22:48:29 GMT-0700 (PDT)  
Coordinates: 32.889306, -117.157333  
View Direction: Southwest

Photo



Caption Road resurfacing Trade Place.

Photo Attributes Capture Date/Time: Wed Jul 12 2017 22:35:27 GMT-0700 (PDT)  
Coordinates: 32.892987, -117.153302  
View Direction: North

Photo



Caption Asphalt cutting Arjons Dr/Miraloni Dr intersection.

Photo Attributes Capture Date/Time: Wed Jul 12 2017 22:20:58 GMT-0700 (PDT)  
Coordinates: 32.894387, -117.144272  
View Direction: Northeast

Photo



Caption Arjons Dr.

Photo Attributes Capture Date/Time: Wed Jul 12 2017 22:12:58 GMT-0700 (PDT)  
Coordinates: 32.894401, -117.146162  
View Direction: East

#### Daily Checklist

- |   |                  |
|---|------------------|
| Q1 – General Avoidance and Minimization: (a) Were the limits of work areas and access roads clearly marked? (b) Were construction activities limited to CPUC-approved work areas?   | Met Requirements |
| Q2 – Air Quality/GHG: (a) Were dust avoidance and minimization requirements implemented and monitored adequately? (b) Was dust generation below required thresholds? (c) Were equipment and vehicles maintained and operated in a manner to limit emissions? (d) Was organic waste collected and separated from non-organic waste | Met Requirements |

for appropriate composting or recycling, as appropriate?	
Q3 – Special-Status Plants: Were impact avoidance and minimization requirements for special-status plants implemented adequately (e.g., avoiding sensitive areas)?	N/A
Q4 – Wildlife (Non-Avian): Were impact avoidance and minimization requirements for wildlife implemented adequately (e.g., avoiding sensitive areas, covering excavations, and inspecting equipment/trenches)?	N/A
Q5 – Nesting and Burrowing Birds: (a) Were active nests and occupied burrows identified and monitored during applicable seasons, as required? (b) Were impact avoidance and minimization requirements for any active nests or occupied burrows implemented adequately?	N/A
Q6 – Water Features and Aquatic Habitat: Were water features avoided?	N/A
Q7 – Stormwater, Erosion, and Sediment Control: (a) Were erosion and sediment control BMPs in place and functioning properly? (b) Were inactive or completed work areas stabilized and/or restored adequately?	Met Requirements
Q8 – Invasive Weed Control: Were procedures to prevent the spread of invasive weeds implemented adequately?	N/A
Q9 – Hazardous Materials and Waste Management: (a) Were hazardous materials stored and labeled properly? (b) Was hazardous material waste disposed of appropriately? (c) Were any spills or leaks addressed adequately? (d) Was solid waste collected and disposed of adequately?	Met Requirements
Q10 – Fire Management: (a) Were fire prevention procedures in place? (b) Was firefighting equipment available on site?	Met Requirements
Q11 – Cultural, Paleontological, and Tribal Resources: (a) Were cultural, paleontological, and tribal resources monitoring and impact avoidance occurring as required? (b) If potential resources or human remains were inadvertently discovered, were response procedures and protocols implemented as required?	Met Requirements
Q11 Notes	Monitors were observed onsite monitoring for resources.
Q12 – Construction Noise: (a) Were noise minimization measures in place, as required? (b) If noise complaints were received, were they documented and addressed, as required?	Met Requirements
Q13 – Maintain Access: (a) Was access to driveways (e.g., businesses, schools, residences) maintained as required? (b) Was access to recreational areas maintained and appropriate signage installed? (c) Was pedestrian and bicycle access maintained, or were detours clearly defined?	Met Requirements
Q14 – Traffic Control (a) Were flaggers present at all times? (b) Were barriers, cones, and signs in place? (c) Were detours clearly marked?	Met Requirements
Q15 – Helicopter Use (a) Were helicopter use restrictions implemented adequately? (b) Were helicopter take-off and landing sites within prescribed limits?	N/A
Q16 – Worker Training and Communication: Have all workers on site received the required environmental trainings for the project?	Met Requirements
Q17 – MMCRP Implementation: (a) Were project activities consistent with the approved project as defined in the EIR and subsequent CPUC authorizations? (b) Were MMCRP procedures implemented adequately?	Met Requirements

# 2014-07-13 AM Inspection Report

## SDG&E Sycamore-Peñasquitos 230-kV Transmission Line Project: Daily Inspection Report

Inspection Date	2017-07-13
Start Time	11:20:00
End Time	15:32:00
Monitor Name	Korey Klutz
Organization	The Sanberg Group (Sanberg)
Summary of Construction Activities	Work continues on P03 and the vault just of Ave Nations/Pomerado Rd intersection. Work was completed and all equipment on Pomerado Rd. was removed from traffic lanes just before 3pm.
Summary of Compliance Activities	LEI and monitors were on a site ensuring compliance with the conditions of approval. Roadway from previous night's work (see last night's report) was clean and free of debris. Traffic was flowing normally.
Were any issues encountered?	No

### Photo Log

Photo



Caption P04 location, no work conducted here today.

Photo Attributes Capture Date/Time: Thu Jul 13 2017 16:39:49 GMT-0700 (PDT)  
Coordinates: 33.157006, -117.312574  
View Direction: East

Photo



Caption Vault work on Pomerado Rd.

Photo Attributes Capture Date/Time: Thu Jul 13 2017 13:37:12 GMT-0700 (PDT)  
Coordinates: 33.157003, -117.312573  
View Direction: West

Photo



Caption Vault on Pomerado Rd.

Photo Attributes Capture Date/Time: Thu Jul 13 2017 16:36:45 GMT-0700 (PDT)  
Coordinates: 33.157003, -117.312573  
View Direction: East

Photo



Caption Ave of Nations traffic control.

Photo Attributes Capture Date/Time: Thu Jul 13 2017 13:36:00 GMT-0700 (PDT)  
Coordinates: 33.157003, -117.312573  
View Direction: West

#### Daily Checklist

Q1 – General Avoidance and Minimization: (a) Were the limits of work areas and access roads clearly marked? (b) Were construction activities limited to CPUC-approved work areas?	Met Requirements
Q1 Notes	All work was conducted within CPUC-approved work limits.
Q2 – Air Quality/GHG: (a) Were dust avoidance and minimization requirements implemented and monitored adequately? (b) Was dust generation below required thresholds? (c) Were equipment and vehicles maintained and operated in a manner to limit emissions? (d) Was organic waste collected and separated from non-organic waste for appropriate composting or recycling, as appropriate?	Met Requirements
Q3 – Special-Status Plants: Were impact avoidance and minimization requirements for special-status plants implemented adequately (e.g., avoiding sensitive areas)?	Met Requirements
Q4 – Wildlife (Non-Avian): Were impact avoidance and minimization requirements for wildlife implemented adequately (e.g., avoiding sensitive areas, covering excavations, and inspecting equipment/trenches)?	Met Requirements
Q5 – Nesting and Burrowing Birds: (a) Were active nests and occupied burrows identified and monitored during applicable seasons, as required? (b) Were impact avoidance and minimization requirements for any active nests or occupied burrows implemented adequately?	Met Requirements
Q6 – Water Features and Aquatic Habitat: Were water features avoided?	N/A
Q7 – Stormwater, Erosion, and Sediment Control: (a) Were erosion and sediment control BMPs in place and functioning properly? (b) Were inactive or completed work areas stabilized and/or restored adequately?	Met Requirements
Q8 – Invasive Weed Control: Were procedures to prevent the spread of invasive weeds implemented adequately?	Met Requirements
Q9 – Hazardous Materials and Waste Management: (a) Were hazardous materials stored and labeled properly? (b) Was hazardous material waste disposed of appropriately? (c) Were any spills or leaks addressed adequately? (d) Was solid waste collected and disposed of adequately?	Met Requirements
Q10 – Fire Management: (a) Were fire prevention procedures in place? (b) Was firefighting equipment available on site?	Met Requirements
Q10 Notes	Fire tools observed on all equipment within work areas.
Q11 – Cultural, Paleontological, and Tribal Resources: (a) Were	Met Requirements

cultural, paleontological, and tribal resources monitoring and impact avoidance occurring as required? (b) If potential resources or human remains were inadvertently discovered, were response procedures and protocols implemented as required?

Q12 – Construction Noise: (a) Were noise minimization measures in place, as required? (b) If noise complaints were received, were they documented and addressed, as required? Met Requirements

Q13 – Maintain Access: (a) Was access to driveways (e.g., businesses, schools, residences) maintained as required? (b) Was access to recreational areas maintained and appropriate signage installed? (c) Was pedestrian and bicycle access maintained, or were detours clearly defined? Met Requirements

Q14 – Traffic Control (a) Were flaggers present at all times? (b) Were barriers, cones, and signs in place? (c) Were detours clearly marked? Met Requirements

Q14 Notes Wait times were estimated to be between 1-5 minutes on Pomerado Rd.

Q15 – Helicopter Use (a) Were helicopter use restrictions implemented adequately? (b) Were helicopter take-off and landing sites within prescribed limits? N/A

Q16 – Worker Training and Communication: Have all workers on site received the required environmental trainings for the project? Met Requirements

Q17 – MMCRP Implementation: (a) Were project activities consistent with the approved project as defined in the EIR and subsequent CPUC authorizations? (b) Were MMCRP procedures implemented adequately? Met Requirements



# 2017-07-13 PM Inspection Report

## SDG&E Sycamore-Peñasquitos 230-kV Transmission Line Project: Daily Inspection Report

Inspection Date	2017-07-13
Start Time	19:30:00
End Time	23:10:00
Monitor Name	Dave Flietner
Organization	The Sanberg Group (Sanberg)
Summary of Construction Activities	Multiple crews working on trenching and vault work between Miralani Dr. and Carroll Rd.
Summary of Compliance Activities	Paleo monitor assigned to trenching on Camino Santa Fe. Archaeology and Native monitors were to spot check other locations; 2 were present at digging on Miralani Dr.
Were any issues encountered?	No

### Photo Log

Photo



Caption Excavation on Carroll Rd. No monitors present at time of visit.

Photo Attributes Capture Date/Time: Thu Jul 13 2017 23:05:18 GMT-0700 (PDT)  
Coordinates: 0, 0  
View Direction: East

Photo



Caption Breaking asphalt to begin trenching (Miralani Dr).

Photo Attributes Capture Date/Time: Thu Jul 13 2017 22:38:16 GMT-0700 (PDT)  
Coordinates: 0, 0  
View Direction: Northeast

Photo



Caption Excavation (Miralani Dr.). Cultural resource monitors present.

Photo Attributes Capture Date/Time: Thu Jul 13 2017 22:35:44 GMT-0700 (PDT)  
Coordinates: 0, 0  
View Direction: North

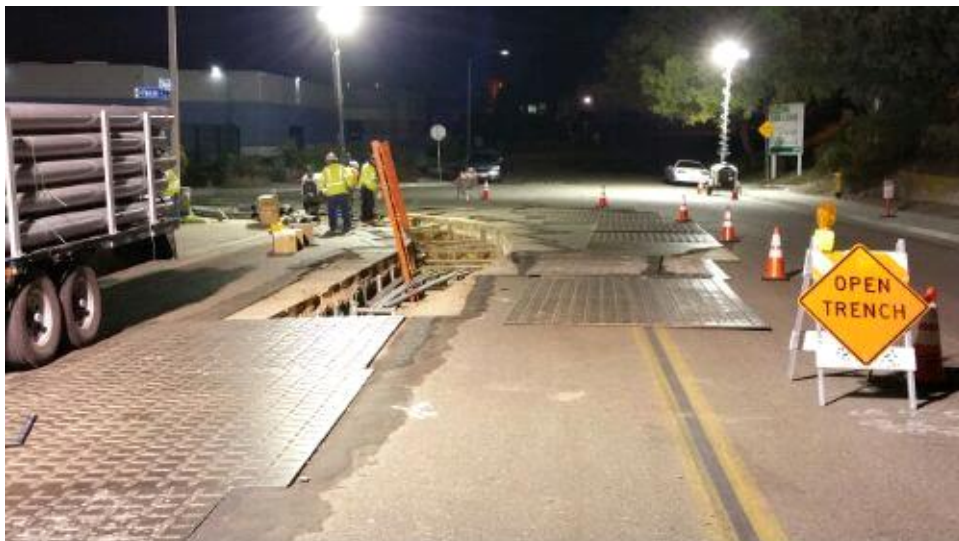
Photo



Caption Refilled trench (Arjons St.).

Photo Attributes Capture Date/Time: Thu Jul 13 2017 22:17:13 GMT-0700 (PDT)  
Coordinates: 0, 0  
View Direction: West

Photo



Caption Shoring trench (Trade St & Trade Pl.)

Photo Attributes Capture Date/Time: Thu Jul 13 2017 22:04:03 GMT-0700 (PDT)

Coordinates: 32.889289, -117.153496  
View Direction: East

Photo



Caption Discarded Quick Mark container (Cam Santa Fe & Trade St.).

Photo Attributes Capture Date/Time: Thu Jul 13 2017 21:35:57 GMT-0700 (PDT)Coordinates: 32.888523, -117.167524  
View Direction: Southeast

Photo



Caption Paleo monitor observing trenching (Camino Santa Fe).

Photo Attributes Capture Date/Time: Thu Jul 13 2017 21:26:47 GMT-0700 (PDT)  
Coordinates: 32.887115, -117.167213  
View Direction: South

Photo



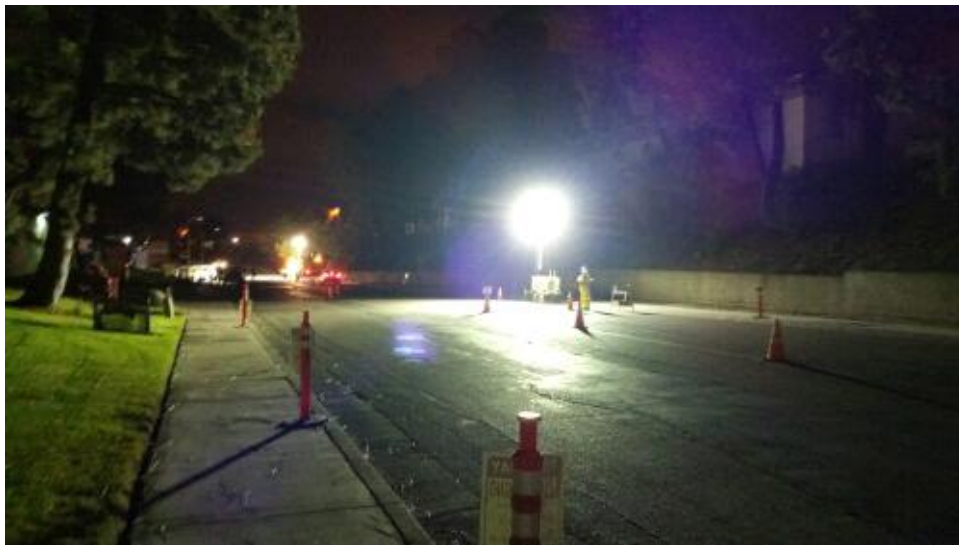
Caption Fire-fighting equipment on crew truck.  
Photo Attributes Capture Date/Time: Thu Jul 13 2017 21:19:35 GMT-0700 (PDT)  
Coordinates: 32.888756, -117.166073  
View Direction: Northwest

Photo



Caption Concrete pour into vault (Trade St.).  
Photo Attributes Capture Date/Time: Thu Jul 13 2017 21:15:18 GMT-0700 (PDT)  
Coordinates: 32.888781, -117.165494  
View Direction: South

Photo



Caption Lights placed first for traffic control, then for trenching (Trade St.).  
Photo Attributes Capture Date/Time: Thu Jul 13 2017 20:58:26 GMT-0700 (PDT)  
Coordinates: 32.889353, -117.154867  
View Direction: Southeast

Photo



Caption Traffic control set before start of work.

Photo Attributes Capture Date/Time: Thu Jul 13 2017 20:46:51 GMT-0700 (PDT)  
 Coordinates: 32.89378, -117.153516  
 View Direction: East

**Daily Checklist**

Q1 – General Avoidance and Minimization: (a) Were the limits of work areas and access roads clearly marked? (b) Were construction activities limited to CPUC-approved work areas?	Met Requirements
Q2 – Air Quality/GHG: (a) Were dust avoidance and minimization requirements implemented and monitored adequately? (b) Was dust generation below required thresholds? (c) Were equipment and vehicles maintained and operated in a manner to limit emissions? (d) Was organic waste collected and separated from non-organic waste for appropriate composting or recycling, as appropriate?	Met Requirements
Q3 – Special-Status Plants: Were impact avoidance and minimization requirements for special-status plants implemented adequately (e.g., avoiding sensitive areas)?	N/A
Q4 – Wildlife (Non-Avian): Were impact avoidance and minimization requirements for wildlife implemented adequately (e.g., avoiding sensitive areas, covering excavations, and inspecting equipment/trenches)?	Met Requirements
Q5 – Nesting and Burrowing Birds: (a) Were active nests and occupied burrows identified and monitored during applicable seasons, as required? (b) Were impact avoidance and minimization requirements for any active nests or occupied burrows implemented adequately?	N/A
Q6 – Water Features and Aquatic Habitat: Were water features avoided?	N/A
Q7 – Stormwater, Erosion, and Sediment Control: (a) Were erosion and sediment control BMPs in place and functioning properly? (b) Were inactive or completed work areas stabilized and/or restored adequately?	Met Requirements
Q8 – Invasive Weed Control: Were procedures to prevent the spread of invasive weeds implemented adequately?	Met Requirements
Q9 – Hazardous Materials and Waste Management: (a) Were hazardous materials stored and labeled properly? (b) Was hazardous material waste disposed of appropriately? (c) Were any spills or leaks addressed adequately? (d) Was solid waste collected and disposed of adequately?	Met Requirements
Q10 – Fire Management: (a) Were fire prevention procedures in place? (b) Was firefighting equipment available on site?	Met Requirements
Q10 Notes	Spot check of vehicles found appropriate equipment with trucks.
Q11 – Cultural, Paleontological, and Tribal Resources: (a) Were cultural, paleontological, and tribal resources monitoring and impact avoidance occurring as required? (b) If potential resources or human remains were inadvertently discovered, were response procedures and protocols implemented as required?	Met Requirements
Q12 – Construction Noise: (a) Were noise minimization measures in place, as required? (b) If noise complaints were received, were they documented and addressed, as required?	Met Requirements
Q13 – Maintain Access: (a) Was access to driveways (e.g., businesses, schools, residences) maintained as required? (b) Was	Met Requirements

access to recreational areas maintained and appropriate signage installed? (c) Was pedestrian and bicycle access maintained, or were detours clearly defined?

Q14 – Traffic Control (a) Were flaggers present at all times? (b) Were barriers, cones, and signs in place? (c) Were detours clearly marked?

Met Requirements

Q14 Notes

Traffic flowed smoothly through work areas. Flaggers were visible and directions were obvious.

Q15 – Helicopter Use (a) Were helicopter use restrictions implemented adequately? (b) Were helicopter take-off and landing sites within prescribed limits?

N/A

Q16 – Worker Training and Communication: Have all workers on site received the required environmental trainings for the project?

Met Requirements

Q17 – MMCRP Implementation: (a) Were project activities consistent with the approved project as defined in the EIR and subsequent CPUC authorizations? (b) Were MMCRP procedures implemented adequately?

Met Requirements

# 2017-07-14 AM Inspection Report

## SDG&E Sycamore-Peñasquitos 230-kV Transmission Line Project: Daily Inspection Report

Inspection Date	2017-07-14
Start Time	09:02:00
End Time	09:43:00
Monitor Name	Dave Flietner
Organization	The Sanberg Group (Sanberg)
Summary of Construction Activities	No active work; daylight inspection.
Summary of Compliance Activities	N/A
Were any issues encountered?	No

### Photo Log

Photo



Caption End of trenching (Miralani D.r).

Photo Attributes Capture Date/Time: Fri Jul 14 2017 09:36:08 GMT-0700 (PDT)  
Coordinates: 0, 0  
View Direction: Southwest

Photo



Caption Road patch and steel plates (Arjons St).

Photo Attributes Capture Date/Time: Fri Jul 14 2017 09:32:13 GMT-0700 (PDT)  
Coordinates: 0, 0  
View Direction: Northwest

Photo



Caption Equipment storage (plus fire tools, Trade St.).

Photo Attributes Capture Date/Time: Fri Jul 14 2017 09:26:16 GMT-0700 (PDT)  
Coordinates: 0, 0  
View Direction: Southwest

Photo



Caption Sediment detention at storm drain inlet (Trade St.).

Photo Attributes Capture Date/Time: Fri Jul 14 2017 09:21:43 GMT-0700 (PDT)  
Coordinates: 0, 0  
View Direction: Southeast

Photo



Caption Equipment storage (Trade St.).

Photo Attributes Capture Date/Time: Fri Jul 14 2017 09:16:02 GMT-0700 (PDT)  
Coordinates: 0, 0  
View Direction: North



Photo



Caption Loose plate placement (Trade St.).

Photo Attributes Capture Date/Time: Fri Jul 14 2017 09:12:42 GMT-0700 (PDT)  
 Coordinates: 0, 0  
 View Direction: Southwest

Photo



Caption Drip pans beneath equipment off Carroll Rd.

Photo Attributes Capture Date/Time: Fri Jul 14 2017 09:04:17 GMT-0700 (PDT)  
 Coordinates: 0, 0  
 View Direction: Northwest

#### Daily Checklist

Q1 – General Avoidance and Minimization: (a) Were the limits of work areas and access roads clearly marked? (b) Were construction activities limited to CPUC-approved work areas?	Met Requirements
Q2 – Air Quality/GHG: (a) Were dust avoidance and minimization requirements implemented and monitored adequately? (b) Was dust generation below required thresholds? (c) Were equipment and vehicles maintained and operated in a manner to limit emissions? (d) Was organic waste collected and separated from non-organic waste for appropriate composting or recycling, as appropriate?	N/A
Q3 – Special-Status Plants: Were impact avoidance and minimization requirements for special-status plants implemented adequately (e.g., avoiding sensitive areas)?	N/A
Q4 – Wildlife (Non-Avian): Were impact avoidance and minimization requirements for wildlife implemented adequately (e.g., avoiding sensitive areas, covering excavations, and inspecting equipment/trenches)?	N/A
Q5 – Nesting and Burrowing Birds: (a) Were active nests and occupied burrows identified and monitored during applicable seasons, as required? (b) Were impact avoidance and minimization requirements for any active nests or occupied burrows implemented adequately?	N/A
Q6 – Water Features and Aquatic Habitat: Were water features avoided?	Met Requirements
Q6 Notes	
Q7 – Stormwater, Erosion, and Sediment Control: (a) Were erosion and sediment control BMPs in place and functioning properly? (b) Were inactive or completed work areas stabilized and/or restored adequately?	Met Requirements

Q7 Notes	Inlet protection in place and functioning.
Q8 – Invasive Weed Control: Were procedures to prevent the spread of invasive weeds implemented adequately?	Met Requirements
Q9 – Hazardous Materials and Waste Management: (a) Were hazardous materials stored and labeled properly? (b) Was hazardous material waste disposed of appropriately? (c) Were any spills or leaks addressed adequately? (d) Was solid waste collected and disposed of adequately?	Met Requirements
Q9 Notes	Oil capture pans in place below construction equipment.
Q10 – Fire Management: (a) Were fire prevention procedures in place? (b) Was firefighting equipment available on site?	Met Requirements
Q11 – Cultural, Paleontological, and Tribal Resources: (a) Were cultural, paleontological, and tribal resources monitoring and impact avoidance occurring as required? (b) If potential resources or human remains were inadvertently discovered, were response procedures and protocols implemented as required?	N/A
Q12 – Construction Noise: (a) Were noise minimization measures in place, as required? (b) If noise complaints were received, were they documented and addressed, as required?	N/A
Q13 – Maintain Access: (a) Was access to driveways (e.g., businesses, schools, residences) maintained as required? (b) Was access to recreational areas maintained and appropriate signage installed? (c) Was pedestrian and bicycle access maintained, or were detours clearly defined?	Met Requirements
Q13 Notes	Traffic flowing smoothly throughout area.
Q14 – Traffic Control (a) Were flaggers present at all times? (b) Were barriers, cones, and signs in place? (c) Were detours clearly marked?	N/A
Q15 – Helicopter Use (a) Were helicopter use restrictions implemented adequately? (b) Were helicopter take-off and landing sites within prescribed limits?	N/A
Q16 – Worker Training and Communication: Have all workers on site received the required environmental trainings for the project?	N/A
Q17 – MMCRP Implementation: (a) Were project activities consistent with the approved project as defined in the EIR and subsequent CPUC authorizations? (b) Were MMCRP procedures implemented adequately?	Met Requirements