

PROJECT MEMORANDUM SYCAMORE-PEÑASQUITOS 230-KV TRANSMISSION LINE PROJECT

Date: July 28, 2017
To: Billie Blanchard, CPUC Project Manager
From: Sheila Hoyer, CPUC Monitoring Supervisor
Subject: Weekly Report #29 – July 16 to July 22, 2017

INTRODUCTION

This report provides a summary of the construction and compliance activities associated with the SDG&E Sycamore-Peñasquitos 230-kV Transmission Line Project for the week of July 16 to July 22, 2017.

A summary of the Notices to Proceed, Minor Project Refinement, and Temporary Extra Workspace Requests are provided in Tables 1, 2, and 3, respectively. A summary of Non-compliance, Project Memoranda and Incidents is provided in Table 4. Daily Inspection Reports are provided in Appendix A.

CPUC/Panorama Environmental Monitors (EMs): Jerry Scott and Korey Klutz

STAGING YARDS

Summary of Activity:

Stonebridge Staging Yard:

1. Delivering materials and equipment, and maintaining BMPs.

Driving Range Staging Yard:

1. Maintaining BMPs, and delivering materials and equipment.

Vulcan Staging Yard:

1. Installing perimeter fence, installing BMPs and delivering materials and equipment.
Delivering and removing spoil material from night excavations.

Underground Transmission Line:

1. Nighttime construction in Segment 5 along Sections 5 through 18 (approximately at Stations 85+00 to 295+00): Saw cutting for trenches and vaults, installing vaults and conduit, potholing to locate existing utilities, laying asphalt, maintaining BMPs, and installing storm drain inlet protection.

2. Daytime construction in Segment 3 in Sections 1 through 3 (approximately at stations 438+00 to 490+00): Saw cutting for trenches and vaults, excavating and installing vaults, grouting around installed vaults, potholing (with vacuum excavation) to locate existing utilities, maintaining BMPs, and installing storm drain inlet protection. Surveying east of I-15 along Segment 3 (approximately at Stations 414+00 to 490+00).

Overhead Transmission Line:

1. Cable pole P03: Cut and fill grading, delivering equipment, installing BMPs, and clearing vegetation.
2. Cable pole P04: Clearing vegetation and installing BMPs.

Environmental Compliance:

1. All pavement was kept clean during this reporting period. No winds occurred that were higher than 20 mph. All off-road diesel-powered construction equipment used on the Project met a minimum of EPA Tier 3 standards.
2. Monitoring for special-status species and inspections for wildlife was implemented to avoid and minimize impacts to biological resources. Nest surveys were conducted on July 17 and 21, 2017, in areas for anticipated construction. No nest monitoring occurred during this reporting period. All project equipment arrived clean and free of mud and/or vegetation.
3. During this reporting period, archaeological, Native American, and paleontological monitoring of vault excavations and trenching occurred in areas of high potential for paleontologically sensitive deposits and archaeological resources. Under the direction of the CPUC-approved archaeologist, spot checking by archaeological and Native American monitors occurred in the trench excavations which were in disturbed soil/fill material where the potential to encounter historical or archaeological resources was low. Cultural monitoring teams will continue spot-checking, and if the soil composition changes, full-time monitoring may be recommended by the CPUC-approved archeologist. Cultural monitoring teams monitored vegetation clearing undertaken for overhead work, as well as demarcated cultural environmentally sensitive areas along the overhead alignment. Paleontological monitoring of vegetation clearing was not recommended by the Qualified Paleontologist; spot checking of the grading activities was recommended to verify the soil composition.
4. No hazardous materials releases occurred during this reporting period.
5. Daytime construction activities were confined to Monday through Friday, and occurred between 8:30 am and 3:30 pm, and on Saturday from 8:00 am to 4:30 pm, consistent with the City of San Diego-approved Traffic Control Permits. Nighttime construction activities were confined to Sunday through Thursday, and occurred between 9:00 pm and 5:00 am. On July 18, 2017, Noise Permit extensions were provided by the City of San Diego for vault and trenching work between stations 35+25 to 312+00 for the period of July 23, 2017 to August 11, 2017.
6. Project personnel parked their personal vehicles within a designated personal vehicle parking area within the project limits within the Stonebridge Staging Yard. Workers

parked within the work limits of the Driving Range Staging Yard or parked on the adjacent public street. On July 19, 2017, Traffic Control Permits were provided by the City of San Diego for the following: vault work between stations 270+00 to 320+00 for the period of July 23, 2017 to August 11, 2017; vault work between stations 433+00 to 471+34 for the period of July 24, 2017 to July 28, 2017; and vault work at station 471+34 for July 22, 2017.

7. The QSP conducted daily inspections during this reporting period. A vacuum was used to collect excess water and a street sweeper was used to clean up excess sediment/dust during sawcutting activities. All equipment staged along the ROW and stored in the staging yards had drip pans in place to capture oil drips/leaks. BMP installation occurred along Pomerado Road and Activity Road, as well as around the overhead work sites at P03 and P04. All trash facilities were covered daily.
8. All construction and compliance personnel on site during this reporting period completed the Project Safety and Environmental Awareness Program (SEAP). To date, approximately 959 Project personnel have received the required SEAP training, and 846 Project personnel have received the UXO training.
9. A Level 1 Compliance Incident was reported to the CPUC on July 20, 2017, for a compliance deviation from the Project's Construction Fire Prevention Plan (Fire Plan). At approximately 12:45 am on July 20, 2017, a contractor was observed by SDG&E personnel to be smoking approximately 50 feet away from the project site on Arjons Drive. The new employee was immediately notified to stop by ARB personnel, with a notice to their work crew that any future occurrence would be cause for termination for the individual, and the associated crew would be sent home for 3 days without pay. The employee explained that he thought he was in a safe location, but did not realize it was not a designated smoking location. The employee was sent home without pay, and was suspended from the project for 3 days. As a result of this incident, the Project was shut-down for an extended tailboard the night of July 20, 2017, and the morning of July 21, 2017, to re-iterate to all field personnel the requirements of the Fire Plan, with focus on the consequences for smoking outside of designated smoking areas, and the need for all personnel to assist in reinforcing this understanding to newer crew members. There were no other compliance level incidents documented during this reporting period.
10. Three public complaints were received regarding noise created by vehicles driving over trench plates at night.

Agency Representatives during Construction (other than CPUC EMs): None

CPUC NOTICES TO PROCEED (NTPs)

Table 1 summarizes the CPUC NTP activity for the SDG&E Sycamore-Peñasquitos 230-kV Transmission Line Project to date.

Table 1 CPUC NTPs

NTP #	Date Submitted	Date Issued	Segment #	Description
1	12/05/16	12/29/16	N/A	Mobilize and begin operations at the construction staging yards.
2	01/23/17	02/07/17	Segment B	Construct the underground portion of the Project from Sycamore Substation to Structure P03, and from Structure P05 to Structure CC MM CP.
3	02/03/17	02/27/17	Segment A Segment C	1. Overhead construction from Sycamore Substation to Structure P06 2. Overhead construction from Structure CC MM CP to the Peñasquitos Substation 3. Deepwell AC mitigation installation 4. Construction activities at Sycamore Canyon and Peñasquitos Substations

MINOR PROJECT REFINEMENT & TEMPORARY EXTRA WORKSPACE REQUESTS

Tables 2 and 3 summarize the Minor Project Refinements (MPRs) and Temporary Extra Workspace (TEWS) Requests have been submitted to date.

Table 2 Minor Project Refinement (MPR) Requests

MPR Request	Date Submitted	Date Issued	Segment #	Description
#1	12/06/16	1/11/17	Segment A	Underground 230-kV getaway from Sycamore Substation to Structure P03.
#2	01/17/17	01/24/17	Segment B	Realignment of the 230-kV underground transmission line from Miramar Road north on Black Mountain Road and west on Activity Road.
#3	03/06/17	03/08/17	Segment A	Provides temporary power to the SDG&E trailer at the Stonebridge Staging Yard through the existing power box located outside of the existing Project boundary.
#4	04/18/17	04/20/17	Segment B	Modifies the approved 2.61-acre Vulcan Mine Yard location approximately 884 feet to the west to an approximately 1.71-acre paved area.
#5	07/10/17	07/11/17	Segment B	Establishes staging yards along southern perimeter of Pomerado Road and temporary work spaces north of P05 and P06

Table 3 Temporary Extra Workspace (TEWS) Requests

TEWS Request	Date Submitted	Date Issued	Segment #	Description
#1	06/29/17	07/05/17	B	Additional staging area located at the southwest corner of the intersection of Pomerado Road and Avenue of Nations
#2	07/19/17	07/19/17	B	Addition to approved temporary work area on Pomerado Road.

NON-COMPLIANCES, PROJECT MEMORANDA & INCIDENTS

There was one non-compliance incident during this reporting period.

Health and Safety Incident

On July 20, 2017, at approximately 9:05 pm at 8230 Miralani Drive (near the intersection of Arjons Drive and Miralani Drive), a traffic control technician (flagger) was struck by a vehicle (minivan) driven by a member of the public. The flagger had stopped southbound traffic (only one vehicle) using a paddle and light wand, and when the flagger looked away, the vehicle accelerated. Although the vehicle attempted to swerve to the left and the flagger tried to get out of the way, the vehicle struck the flagger on the outside of his knee. The employee stated he did not need medical attention and was treated with first aid.

Table 4 Non-Compliances, Project Memoranda, and Other Incidents

Type	Date	Location	Description
Level 1	04/12/2017	Segment B	Potable water was used in a street sweeper
Memoranda	04/19/2017	Segment B	Traffic incident at Driving Range Staging Yard
Level 1	04/24/2017	Segment B	Presence of trash along the project alignment
Level 1	05/01/2017	Segment B	Working outside of City-approved hours
Memoranda	05/03/2017	Segment B	Traffic incident at Snapple/7-Up Plant
Memoranda	05/18/2017	Segment B	Traffic incident at Station 169+89
Level 1	06/08/2017	Segment B	Non-adherence to approved Fire Plan
Level 2	06/15/2017	Segment B	Non-adherence to approved Fire Plan
Memoranda	07/06/2017	Segment B	Traffic incident at Carroll Canyon Road
Level 1	07/20/2017	Segment B	Non-adherence to approved Fire Plan
Memoranda	07/20/2017	Segment B	Traffic incident at Miralani Drive

ATTACHMENT A INSPECTION REPORTS

2017-07-17 AM Inspection Report

SDG&E Sycamore-Peñasquitos 230-kV Transmission Line Project: Daily Inspection Report

Inspection Date	2017-07-17
Start Time	11:30:00
End Time	15:30:00
Monitor Name	Jerry Scott
Organization	The Sanberg Group (Sanberg)
Summary of Construction Activities	Crews were excavating, trenching, and shoring. Crews were installing and removing steel plates. Crews were doing asphalt work. Street sweeper cleaned up after work terminated.
Summary of Compliance Activities	LEI, all monitors, SDG&E reps, superintendent and inspectors were on site. All traffic flaggers, cones, barricades, signage etc. were in place. Two fire safety techs were on site along Pomerado Road. Sensitive plants were marked off with green flagging tape.
Were any issues encountered?	No

Photo Log

Photo



Caption Street sweeper begins sweeping on Pomerado Road.

Photo Attributes Capture Date/Time: Mon Jul 17 2017 14:26:20 GMT-0700 (PDT)
Coordinates: 32.897908, -117.103075
View Direction: Southeast

Photo



Caption BMPs in place on Pomerado Road.

Photo Attributes Capture Date/Time: Mon Jul 17 2017 13:13:41 GMT-0700 (PDT)
Coordinates: 32.894750, -117.108550
View Direction: West

Photo



Caption Cones and signage in place on Pomerado Road.

Photo Attributes Capture Date/Time: Mon Jul 17 2017 13:06:46 GMT-0700 (PDT)
Coordinates: 32.900843, -117.096080
View Direction: South

Photo



Caption Work areas clearly marked on Pomerado Road.

Photo Attributes Capture Date/Time: Mon Jul 17 2017 13:04:45 GMT-0700 (PDT)
 Coordinates: 32.902693, -117.091288
 View Direction: South

Photo



Caption Traffic flaggers in place on Pomerado Road

Photo Attributes Capture Date/Time: Mon Jul 17 2017 12:56:14 GMT-0700 (PDT)
 Coordinates: 32.897710, -117.102658
 View Direction: Southeast

Daily Checklist

Q1 – General Avoidance and Minimization: (a) Were the limits of work areas and access roads clearly marked? (b) Were construction activities limited to CPUC-approved work areas? Met Requirements

Q1 Notes All requirements were met.

Q2 – Air Quality/GHG: (a) Were dust avoidance and minimization requirements implemented and monitored adequately? (b) Was dust generation below required thresholds? (c) Were equipment and Met Requirements

vehicles maintained and operated in a manner to limit emissions? (d) Was organic waste collected and separated from non-organic waste for appropriate composting or recycling, as appropriate?	
Q2 Notes	All requirements were met.
Q3 – Special-Status Plants: Were impact avoidance and minimization requirements for special-status plants implemented adequately (e.g., avoiding sensitive areas)?	Met Requirements
Q3 Notes	All requirements were met.
Q4 – Wildlife (Non-Avian): Were impact avoidance and minimization requirements for wildlife implemented adequately (e.g., avoiding sensitive areas, covering excavations, and inspecting equipment/trenches)?	Met Requirements
Q4 Notes	All requirements were met.
Q5 – Nesting and Burrowing Birds: (a) Were active nests and occupied burrows identified and monitored during applicable seasons, as required? (b) Were impact avoidance and minimization requirements for any active nests or occupied burrows implemented adequately?	Met Requirements
Q5 Notes	All requirements were met.
Q6 – Water Features and Aquatic Habitat: Were water features avoided?	N/A
Q7 – Stormwater, Erosion, and Sediment Control: (a) Were erosion and sediment control BMPs in place and functioning properly? (b) Were inactive or completed work areas stabilized and/or restored adequately?	Met Requirements
Q7 Notes	All BMPs were in place.
Q8 – Invasive Weed Control: Were procedures to prevent the spread of invasive weeds implemented adequately?	N/A
Q9 – Hazardous Materials and Waste Management: (a) Were hazardous materials stored and labeled properly? (b) Was hazardous material waste disposed of appropriately? (c) Were any spills or leaks addressed adequately? (d) Was solid waste collected and disposed of adequately?	Met Requirements
Q9 Notes	All requirements were met.
Q10 – Fire Management: (a) Were fire prevention procedures in place? (b) Was firefighting equipment available on site?	Met Requirements
Q10 Notes	Two fire safety techs on site.
Q11 – Cultural, Paleontological, and Tribal Resources: (a) Were cultural, paleontological, and tribal resources monitoring and impact avoidance occurring as required? (b) If potential resources or human remains were inadvertently discovered, were response procedures and protocols implemented as required?	Met Requirements
Q11 Notes	All requirements were met.
Q12 – Construction Noise: (a) Were noise minimization measures in place, as required? (b) If noise complaints were received, were they documented and addressed, as required?	Met Requirements
Q12 Notes	All requirements were met.
Q13 – Maintain Access: (a) Was access to driveways (e.g., businesses, schools, residences) maintained as required? (b) Was access to recreational areas maintained and appropriate signage installed? (c) Was pedestrian and bicycle access maintained, or were detours clearly defined?	Met Requirements
Q13 Notes	All requirements were met.
Q14 – Traffic Control (a) Were flaggers present at all times? (b) Were barriers, cones, and signs in place? (c) Were detours clearly marked?	Met Requirements
Q14 Notes	All traffic safety personnel present.
Q15 – Helicopter Use (a) Were helicopter use restrictions implemented adequately? (b) Were helicopter take-off and landing sites within prescribed limits?	N/A
Q16 – Worker Training and Communication: Have all workers on site received the required environmental trainings for the project?	Met Requirements
Q16 Notes	All requirements were met.
Q17 – MMCRP Implementation: (a) Were project activities consistent with the approved project as defined in the EIR and subsequent CPUC authorizations? (b) Were MMCRP procedures implemented adequately?	Met Requirements
Q17 Notes	All requirements were met.

2017-07-17 PM Inspection Report

SDG&E Sycamore-Peñasquitos 230-kV Transmission Line Project: Daily Inspection Report

Inspection Date	2017-07-17
Start Time	19:00:00
End Time	21:00:00
Monitor Name	Jerry Scott
Organization	The Sanberg Group (Sanberg)
Summary of Construction Activities	Crews are doing asphalt work. Crews are installing conduit. Crews are potholing. Crews are removing and installing steel plates over excavations and trenches. Crews are excavating, trenching, and shoring.
Summary of Compliance Activities	LEI, all monitors, all traffic personnel and equipment, SDG&E reps, inspectors, and superintendent on site. Downward-facing lighting in place. Construction boundaries clearly marked. Construction noise, emissions, and dust kept to a minimum. Steel plates in place when trenches are not in use.
Were any issues encountered?	No

Photo Log

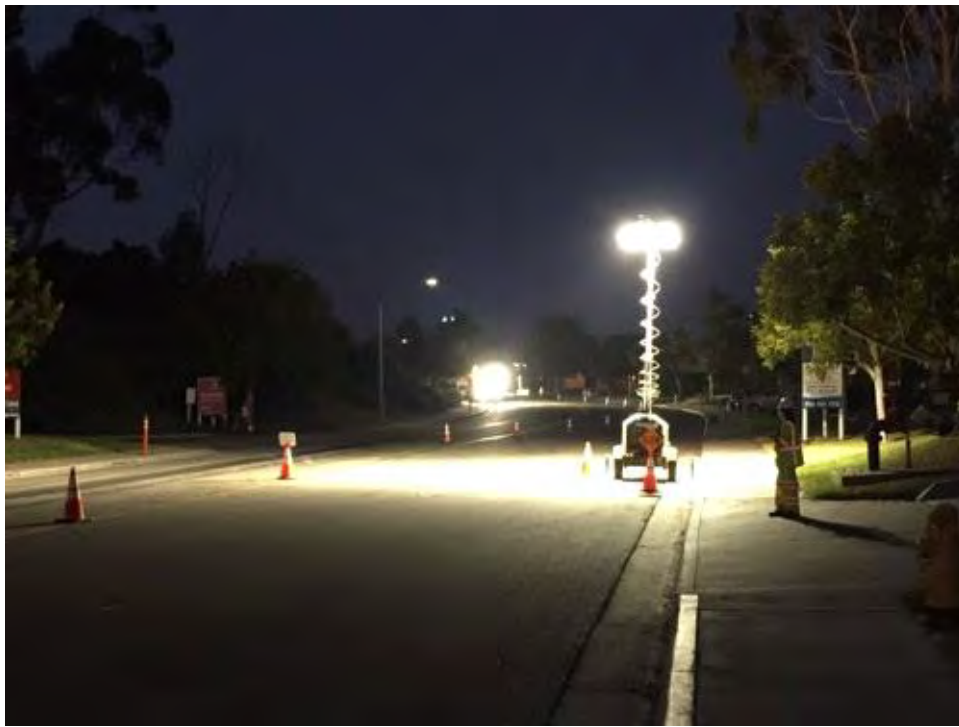
Photo



Caption Flaggers in place on Miralani Drive.

Photo Attributes Capture Date/Time: Mon Jul 17 2017 20:51:52 GMT-0700 (PDT)
Coordinates: 32.894795, -117.143923
View Direction: North

Photo



Caption Lighting in place on Arjohns Drive.

Photo Attributes Capture Date/Time: Mon Jul 17 2017 20:25:23 GMT-0700 (PDT)
Coordinates: 32.893789, -117.152261
View Direction: East

Photo



Caption Hazardous materials clearly labeled and stored within secondary containment.

Photo Attributes Capture Date/Time: Mon Jul 17 2017 20:09:11 GMT-0700 (PDT)
Coordinates: 32.891067, -117.191347
View Direction: East

Photo



Caption Digital signage in place on Camino Santa Fe.

Photo Attributes Capture Date/Time: Mon Jul 17 2017 19:39:16 GMT-0700 (PDT)
 Coordinates: 32.889924, -117.168085
 View Direction: South

Photo



Caption Drip pans in place under equipment at construction yard off of Camino Ruiz.

Photo Attributes Capture Date/Time: Mon Jul 17 2017 19:33:47 GMT-0700 (PDT)
 Coordinates: 32.891858, -117.158292
 View Direction: Northwest

Daily Checklist

- | | |
|---|-----------------------|
| Q1 – General Avoidance and Minimization: (a) Were the limits of work areas and access roads clearly marked? (b) Were construction activities limited to CPUC-approved work areas? | Met Requirements |
| Q1 Notes | All requirements met. |
| Q2 – Air Quality/GHG: (a) Were dust avoidance and minimization requirements implemented and monitored adequately? (b) Was dust generation below required thresholds? (c) Were equipment | Met Requirements |

and vehicles maintained and operated in a manner to limit emissions? (d) Was organic waste collected and separated from non-organic waste for appropriate composting or recycling, as appropriate?

Q2 Notes	No vehicles observed idling over the 5-minute limit.
Q3 – Special-Status Plants: Were impact avoidance and minimization requirements for special-status plants implemented adequately (e.g., avoiding sensitive areas)?	N/A
Q4 – Wildlife (Non-Avian): Were impact avoidance and minimization requirements for wildlife implemented adequately (e.g., avoiding sensitive areas, covering excavations, and inspecting equipment/trenches)?	Met Requirements
Q4 Notes	All requirements met
Q5 – Nesting and Burrowing Birds: (a) Were active nests and occupied burrows identified and monitored during applicable seasons, as required? (b) Were impact avoidance and minimization requirements for any active nests or occupied burrows implemented adequately?	N/A
Q6 – Water Features and Aquatic Habitat: Were water features avoided?	N/A
Q7 – Stormwater, Erosion, and Sediment Control: (a) Were erosion and sediment control BMPs in place and functioning properly? (b) Were inactive or completed work areas stabilized and/or restored adequately?	Met Requirements
Q7 Notes	All BMPs in place and in good working order.
Q8 – Invasive Weed Control: Were procedures to prevent the spread of invasive weeds implemented adequately?	N/A
Q9 – Hazardous Materials and Waste Management: (a) Were hazardous materials stored and labeled properly? (b) Was hazardous material waste disposed of appropriately? (c) Were any spills or leaks addressed adequately? (d) Was solid waste collected and disposed of adequately?	Met Requirements
Q9 Notes	All requirements met.
Q10 – Fire Management: (a) Were fire prevention procedures in place? (b) Was firefighting equipment available on site?	Met Requirements
Q10 Notes	Fire safety techs on site.
Q11 – Cultural, Paleontological, and Tribal Resources: (a) Were cultural, paleontological, and tribal resources monitoring and impact avoidance occurring as required? (b) If potential resources or human remains were inadvertently discovered, were response procedures and protocols implemented as required?	Met Requirements
Q11 Notes	All monitors present.
Q12 – Construction Noise: (a) Were noise minimization measures in place, as required? (b) If noise complaints were received, were they documented and addressed, as required?	Met Requirements
Q12 Notes	All requirements met.
Q13 – Maintain Access: (a) Was access to driveways (e.g., businesses, schools, residences) maintained as required? (b) Was access to recreational areas maintained and appropriate signage installed? (c) Was pedestrian and bicycle access maintained, or were detours clearly defined?	Met Requirements
Q13 Notes	All requirements met.
Q14 – Traffic Control (a) Were flaggers present at all times? (b) Were barriers, cones, and signs in place? (c) Were detours clearly marked?	Met Requirements
Q14 Notes	All requirements met.
Q15 – Helicopter Use (a) Were helicopter use restrictions implemented adequately? (b) Were helicopter take-off and landing sites within prescribed limits?	N/A
Q16 – Worker Training and Communication: Have all workers on site received the required environmental trainings for the project?	Met Requirements
Q16 Notes	All requirements met.
Q17 – MMCRP Implementation: (a) Were project activities consistent with the approved project as defined in the EIR and subsequent CPUC authorizations? (b) Were MMCRP procedures implemented adequately?	Met Requirements
Q17 Notes	All requirements met.

2017-07-18 AM Inspection Report

SDG&E Sycamore- Peñasquitos 230-kV Transmission Line Project: Daily Inspection Report

Inspection Date	2017-07-18
Start Time	08:00:00
End Time	14:00:00
Monitor Name	Jerry Scott
Organization	The Sanberg Group (Sanberg)
Summary of Construction Activities	Crews are potholing and doing asphalt work on Pomerado Road. Crews are excavating, trenching, and shoring on Pomerado Road. Dump trucks are hauling away fill to a designated location. Crews are removing and installing steel plates on Pomerado Road. Crews are installing BMPs at Pole 04 and conducting site work at P03.
Summary of Compliance Activities	LEI, all monitors, SDG&E site reps, inspectors, and superintendent are on site. All traffic flaggers and traffic safety equipment in place. Sensitive plant areas are marked with green flagging tape at P03 and P04. BMPs are in place and in good condition.
Were any issues encountered?	No

Photo Log

Photo



Caption Erosion fencing being installed at Pole 04.

Photo Attributes Capture Date/Time: Tue Jul 18 2017 12:50:03 GMT-0700 (PDT)
Coordinates: 32.920826, -117.036657
View Direction: Southwest

Photo



Caption Dust control measures in practice at Pole site 03.

Photo Attributes Capture Date/Time: Tue Jul 18 2017 12:36:37 GMT-0700 (PDT)
Coordinates: 32.919636, -117.031935
View Direction: West

Photo



Caption Drip pans in place on Pomerado Road.

Photo Attributes Capture Date/Time: Tue Jul 18 2017 10:20:53 GMT-0700 (PDT)
Coordinates: 32.897449, -117.102870
View Direction: South

Photo



Caption Fire safety tech on site on Pomerado Road.

Photo Attributes Capture Date/Time: Tue Jul 18 2017 10:15:53 GMT-0700 (PDT)
Coordinates: 32.897473, -117.103115
View Direction: Southeast

Photo



Caption Traffic flaggers in place on Pomerado Road at Ave of Nations.

Photo Attributes Capture Date/Time: Tue Jul 18 2017 10:08:54 GMT-0700 (PDT)
Coordinates: 32.897950, -117.102740
View Direction: Southeast

Photo



Caption BMPs in place on Pomerado Road.

Photo Attributes Capture Date/Time: Tue Jul 18 2017 10:07:50 GMT-0700 (PDT)
 Coordinates: 32.898350, -117.101226
 View Direction: Southwest

Photo



Caption BMP wattles in place on Pomerado Road.

Photo Attributes Capture Date/Time: Tue Jul 18 2017 09:30:59 GMT-0700 (PDT)
 Coordinates: 32.895055, -117.108361
 View Direction: Northeast

Daily Checklist

- | | |
|---|----------------------------|
| Q1 – General Avoidance and Minimization: (a) Were the limits of work areas and access roads clearly marked? (b) Were construction activities limited to CPUC-approved work areas? | Met Requirements |
| Q1 Notes | All requirements were met. |
| Q2 – Air Quality/GHG: (a) Were dust avoidance and minimization requirements implemented and monitored adequately? (b) Was dust generation below required thresholds? (c) Were equipment and | Met Requirements |

vehicles maintained and operated in a manner to limit emissions? (d) Was organic waste collected and separated from non-organic waste for appropriate composting or recycling, as appropriate?	
Q2 Notes	All requirements met.
Q3 – Special-Status Plants: Were impact avoidance and minimization requirements for special-status plants implemented adequately (e.g., avoiding sensitive areas)?	Met Requirements
Q3 Notes	Sensitive areas marked with green flagging tape.
Q4 – Wildlife (Non-Avian): Were impact avoidance and minimization requirements for wildlife implemented adequately (e.g., avoiding sensitive areas, covering excavations, and inspecting equipment/trenches)?	Met Requirements
Q4 Notes	All requirements met.
Q5 – Nesting and Burrowing Birds: (a) Were active nests and occupied burrows identified and monitored during applicable seasons, as required? (b) Were impact avoidance and minimization requirements for any active nests or occupied burrows implemented adequately?	Met Requirements
Q5 Notes	Nest was monitored by avian biologist.
Q6 – Water Features and Aquatic Habitat: Were water features avoided?	N/A
Q7 – Stormwater, Erosion, and Sediment Control: (a) Were erosion and sediment control BMPs in place and functioning properly? (b) Were inactive or completed work areas stabilized and/or restored adequately?	Met Requirements
Q7 Notes	All requirements met.
Q8 – Invasive Weed Control: Were procedures to prevent the spread of invasive weeds implemented adequately?	N/A
Q9 – Hazardous Materials and Waste Management: (a) Were hazardous materials stored and labeled properly? (b) Was hazardous material waste disposed of appropriately? (c) Were any spills or leaks addressed adequately? (d) Was solid waste collected and disposed of adequately?	Met Requirements
Q9 Notes	All requirements met.
Q10 – Fire Management: (a) Were fire prevention procedures in place? (b) Was firefighting equipment available on site?	Met Requirements
Q10 Notes	Fire safety techs on site.
Q11 – Cultural, Paleontological, and Tribal Resources: (a) Were cultural, paleontological, and tribal resources monitoring and impact avoidance occurring as required? (b) If potential resources or human remains were inadvertently discovered, were response procedures and protocols implemented as required?	Met Requirements
Q11 Notes	All monitors on site.
Q12 – Construction Noise: (a) Were noise minimization measures in place, as required? (b) If noise complaints were received, were they documented and addressed, as required?	Met Requirements
Q12 Notes	All requirements met.
Q13 – Maintain Access: (a) Was access to driveways (e.g., businesses, schools, residences) maintained as required? (b) Was access to recreational areas maintained and appropriate signage installed? (c) Was pedestrian and bicycle access maintained, or were detours clearly defined?	Met Requirements
Q13 Notes	All requirements met.
Q14 – Traffic Control (a) Were flaggers present at all times? (b) Were barriers, cones, and signs in place? (c) Were detours clearly marked?	Met Requirements
Q14 Notes	All requirements were met.
Q15 – Helicopter Use (a) Were helicopter use restrictions implemented adequately? (b) Were helicopter take-off and landing sites within prescribed limits?	N/A
Q16 – Worker Training and Communication: Have all workers on site received the required environmental trainings for the project?	Met Requirements
Q16 Notes	All requirements met.
Q17 – MMCRP Implementation: (a) Were project activities consistent with the approved project as defined in the EIR and subsequent CPUC authorizations? (b) Were MMCRP procedures implemented adequately?	Met Requirements
Q17 Notes	All requirements met.

2017-07-19 AM Inspection Report

SDG&E Sycamore-Peñasquitos 230-kV Transmission Line Project: Daily Inspection Report

Inspection Date	2017-07-19
Start Time	11:00:00
End Time	15:30:00
Monitor Name	Jerry Scott
Organization	The Sanberg Group (Sanberg)
Summary of Construction Activities	Crews are potholing on Pomerado Road. Crews are excavating, trenching, and shoring along Pomerado Road. Trucks were filling trenches along Pomerado Road and dump trucks hauled away fill to a designated location. Grading continued at sites PO3 and PO4.
Summary of Compliance Activities	LEI, SDG&E reps, all monitors, fire safety techs, traffic safety, inspectors, and superintendent were on site. All BMP's were in place and in good working order. Construction zones were clearly marked and within CPUC approved areas. Crews wet down the soil where they were heading at PO3.
Were any issues encountered?	No

Photo Log

Photo



Caption BMP's in place on Willow Creek Road.

Photo Attributes Capture Date/Time: Wed Jul 19 2017 14:51:03 GMT-0700 (PDT)
Coordinates: 32.897816, -117.102612
View Direction: West

Photo



Caption Street sweeper in service on Pomerado Road.

Photo Attributes Capture Date/Time: Wed Jul 19 2017 14:49:12 GMT-0700 (PDT)
Coordinates: 32.897801, -117.102584
View Direction: Southwest

Photo



Caption Silt/erosion fencing installed at Pole 04.

Photo Attributes Capture Date/Time: Wed Jul 19 2017 13:14:39 GMT-0700 (PDT)
Coordinates: 32.920924, -117.036725
View Direction: West

Photo



Caption Dust control in practice at Pole 03.

Photo Attributes Capture Date/Time: Wed Jul 19 2017 12:03:21 GMT-0700 (PDT)
 Coordinates: 32.919604, -117.031925
 View Direction: Northwest

Photo



Caption Traffic flaggers on site at Pomerado Road.

Photo Attributes Capture Date/Time: Wed Jul 19 2017 11:56:08 GMT-0700 (PDT)
 Coordinates: 32.895619, -117.107612
 View Direction: Northeast

Daily Checklist

Q1 – General Avoidance and Minimization: (a) Were the limits of work areas and access roads clearly marked? (b) Were construction activities limited to CPUC-approved work areas? Met Requirements

Q1 Notes Met requirements.

Q2 – Air Quality/GHG: (a) Were dust avoidance and minimization requirements implemented and monitored adequately? (b) Was dust generation below required thresholds? (c) Were equipment Met Requirements

and vehicles maintained and operated in a manner to limit emissions? (d) Was organic waste collected and separated from non-organic waste for appropriate composting or recycling, as appropriate?

Q2 Notes	No vehicles were observed idling over the 5-minute limit.
Q3 – Special-Status Plants: Were impact avoidance and minimization requirements for special-status plants implemented adequately (e.g., avoiding sensitive areas)?	Met Requirements
Q3 Notes	Met requirements.
Q4 – Wildlife (Non-Avian): Were impact avoidance and minimization requirements for wildlife implemented adequately (e.g., avoiding sensitive areas, covering excavations, and inspecting equipment/trenches)?	Met Requirements
Q4 Notes	Met requirements.
Q5 – Nesting and Burrowing Birds: (a) Were active nests and occupied burrows identified and monitored during applicable seasons, as required? (b) Were impact avoidance and minimization requirements for any active nests or occupied burrows implemented adequately?	Met Requirements
Q5 Notes	Met requirements.
Q6 – Water Features and Aquatic Habitat: Were water features avoided?	N/A
Q7 – Stormwater, Erosion, and Sediment Control: (a) Were erosion and sediment control BMPs in place and functioning properly? (b) Were inactive or completed work areas stabilized and/or restored adequately?	Met Requirements
Q7 Notes	All BMPs were in place and in good working order.
Q8 – Invasive Weed Control: Were procedures to prevent the spread of invasive weeds implemented adequately?	N/A
Q9 – Hazardous Materials and Waste Management: (a) Were hazardous materials stored and labeled properly? (b) Was hazardous material waste disposed of appropriately? (c) Were any spills or leaks addressed adequately? (d) Was solid waste collected and disposed of adequately?	Met Requirements
Q9 Notes	Met requirements.
Q10 – Fire Management: (a) Were fire prevention procedures in place? (b) Was firefighting equipment available on site?	Met Requirements
Q10 Notes	Fire safety techs on site.
Q11 – Cultural, Paleontological, and Tribal Resources: (a) Were cultural, paleontological, and tribal resources monitoring and impact avoidance occurring as required? (b) If potential resources or human remains were inadvertently discovered, were response procedures and protocols implemented as required?	Met Requirements
Q11 Notes	All monitors present.
Q12 – Construction Noise: (a) Were noise minimization measures in place, as required? (b) If noise complaints were received, were they documented and addressed, as required?	Met Requirements
Q12 Notes	Met requirements.
Q13 – Maintain Access: (a) Was access to driveways (e.g., businesses, schools, residences) maintained as required? (b) Was access to recreational areas maintained and appropriate signage installed? (c) Was pedestrian and bicycle access maintained, or were detours clearly defined?	Met Requirements
Q13 Notes	Requirements met.
Q14 – Traffic Control (a) Were flaggers present at all times? (b) Were barriers, cones, and signs in place? (c) Were detours clearly marked?	Met Requirements
Q14 Notes	Traffic flaggers in place.
Q15 – Helicopter Use (a) Were helicopter use restrictions implemented adequately? (b) Were helicopter take-off and landing sites within prescribed limits?	N/A
Q16 – Worker Training and Communication: Have all workers on site received the required environmental trainings for the project?	Met Requirements
Q16 Notes	Met requirements.
Q17 – MMCRP Implementation: (a) Were project activities consistent with the approved project as defined in the EIR and subsequent CPUC authorizations? (b) Were MMCRP procedures implemented adequately?	Met Requirements
Q17 Notes	Requirements met.

2017-07-19 PM Inspection Report

SDG&E Sycamore-Peñasquitos 230-kV Transmission Line Project: Daily Inspection Report

Inspection Date	2017-07-19
Start Time	19:34:00
End Time	22:04:00
Monitor Name	Jerry Scott
Organization	The Sanberg Group (Sanberg)
Summary of Construction Activities	Crews are excavating, trenching, and removing fill on Activity Road, Carroll Canyon Road, Trade Place, Arjons Drive, and Miralani Drive. Crews are potholing and doing asphalt work on Activity Road.
Summary of Compliance Activities	LEI, SDG&E reps, all monitors, inspectors, and superintendent were on site. All flaggers and traffic safety were in place. Night downward facing lighting was abundant. Steel plates were in place over trenches. Crews had required fire safety equipment at each site.
Were any issues encountered?	No

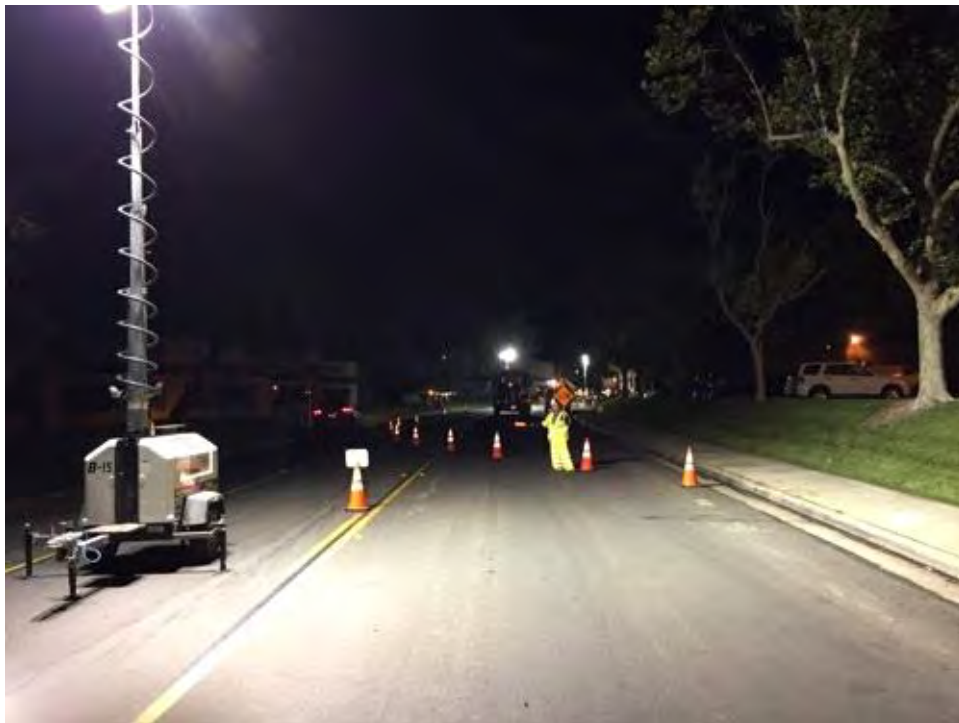
Photo Log

Photo

Caption Fire prevention practices in action on Activity.

Photo Attributes Capture Date/Time: Wed Jul 19 2017 21:01:02 GMT-0700 (PDT)
Coordinates: 32.896928, -117.127709
View Direction: Northwest

Photo



Caption Traffic flaggers in place on Activity Road

Photo Attributes Capture Date/Time: Wed Jul 19 2017 20:41:59 GMT-0700 (PDT)
Coordinates: 32.896820, -117.128799
View Direction: East

Photo



Caption Drip pans in place on Trade Place.

Photo Attributes Capture Date/Time: Wed Jul 19 2017 19:53:01 GMT-0700 (PDT)
Coordinates: 32.891981, -117.153454
View Direction: East

Photo



Caption BMPs in place on Arjons Drive.

Photo Attributes Capture Date/Time: Wed Jul 19 2017 19:50:12 GMT-0700 (PDT)
Coordinates: 32.894524, -117.148986
View Direction: Southeast

Photo



Caption Digital signage in place on Miralani Drive.

Photo Attributes Capture Date/Time: Wed Jul 19 2017 19:44:00 GMT-0700 (PDT)
 Coordinates: 32.896083, -117.141374
 View Direction: South

Daily Checklist	
Q1 – General Avoidance and Minimization: (a) Were the limits of work areas and access roads clearly marked? (b) Were construction activities limited to CPUC-approved work areas?	Met Requirements
Q1 Notes	Met requirements.
Q2 – Air Quality/GHG: (a) Were dust avoidance and minimization requirements implemented and monitored adequately? (b) Was dust generation below required thresholds? (c) Were equipment and vehicles maintained and operated in a manner to limit emissions? (d) Was organic waste collected and separated from non-organic waste for appropriate composting or recycling, as appropriate?	Met Requirements
Q2 Notes	No vehicles observed idling over 5-minute limit.
Q3 – Special-Status Plants: Were impact avoidance and minimization requirements for special-status plants implemented adequately (e.g., avoiding sensitive areas)?	N/A
Q4 – Wildlife (Non-Avian): Were impact avoidance and minimization requirements for wildlife implemented adequately (e.g., avoiding sensitive areas, covering excavations, and inspecting equipment/trenches)?	Met Requirements
Q4 Notes	All requirements met.
Q5 – Nesting and Burrowing Birds: (a) Were active nests and occupied burrows identified and monitored during applicable seasons, as required? (b) Were impact avoidance and minimization requirements for any active nests or occupied burrows implemented adequately?	N/A
Q6 – Water Features and Aquatic Habitat: Were water features avoided?	N/A
Q7 – Stormwater, Erosion, and Sediment Control: (a) Were erosion and sediment control BMPs in place and functioning properly? (b) Were inactive or completed work areas stabilized and/or restored adequately?	Met Requirements
Q7 Notes	All BMPs in place.
Q8 – Invasive Weed Control: Were procedures to prevent the spread of invasive weeds implemented adequately?	N/A
Q9 – Hazardous Materials and Waste Management: (a) Were hazardous materials stored and labeled properly? (b) Was hazardous material waste disposed of appropriately? (c) Were any spills or leaks addressed adequately? (d) Was solid waste collected and disposed of adequately?	Met Requirements
Q9 Notes	All requirements met.

Q10 – Fire Management: (a) Were fire prevention procedures in place? (b) Was firefighting equipment available on site?	Met Requirements
Q10 Notes	Requirements met.
Q11 – Cultural, Paleontological, and Tribal Resources: (a) Were cultural, paleontological, and tribal resources monitoring and impact avoidance occurring as required? (b) If potential resources or human remains were inadvertently discovered, were response procedures and protocols implemented as required?	Met Requirements
Q11 Notes	All monitors present.
Q12 – Construction Noise: (a) Were noise minimization measures in place, as required? (b) If noise complaints were received, were they documented and addressed, as required?	Met Requirements
Q12 Notes	All requirements met.
Q13 – Maintain Access: (a) Was access to driveways (e.g., businesses, schools, residences) maintained as required? (b) Was access to recreational areas maintained and appropriate signage installed? (c) Was pedestrian and bicycle access maintained, or were detours clearly defined?	Met Requirements
Q13 Notes	All requirements met.
Q14 – Traffic Control (a) Were flaggers present at all times? (b) Were barriers, cones, and signs in place? (c) Were detours clearly marked?	Met Requirements
Q14 Notes	All requirements met.
Q15 – Helicopter Use (a) Were helicopter use restrictions implemented adequately? (b) Were helicopter take-off and landing sites within prescribed limits?	N/A
Q16 – Worker Training and Communication: Have all workers on site received the required environmental trainings for the project?	Met Requirements
Q16 Notes	Met requirements.
Q17 – MMCRP Implementation: (a) Were project activities consistent with the approved project as defined in the EIR and subsequent CPUC authorizations? (b) Were MMCRP procedures implemented adequately?	Met Requirements
Q17 Notes	Met requirements.

2017-07-20 AM Inspection Report

SDG&E Sycamore- Peñasquitos 230-kV Transmission Line Project: Daily Inspection Report

Inspection Date	2017-07-20
Start Time	08:00:00
End Time	14:00:00
Monitor Name	Jerry Scott
Organization	The Sanberg Group (Sanberg)
Summary of Construction Activities	Crews are excavating, trenching , and shoring on Pomerado Road. Crews are also potholing on Pomerado Road. Dump trucks are lined up on Pomerado Road to haul away fill. Grading continues on Pole site 03.
Summary of Compliance Activities	LEI, all monitors, SDG&E reps, traffic flaggers, inspectors, and superintendent were on site. Trenches were covered with steel plates when not in use. Construction zones were clearly marked. Dust was kept to a minimum. Fire safety techs were on site. All crews and equipment operators were equipped with fire prevention equipment.
Were any issues encountered?	No

Photo Log

Photo



Caption Digital signage in place at entrance to construction zone on Pomerado Road.

Photo Attributes Capture Date/Time: Thu Jul 20 2017 12:16:20 GMT-0700 (PDT)
Coordinates: 32.894165, -117.109885
View Direction: East

Photo



Caption Separator for rock from soil at Pole 03 site .

Photo Attributes Capture Date/Time: Thu Jul 20 2017 10:32:12 GMT-0700 (PDT)
Coordinates: 32.919721, -117.031894
View Direction: West

Photo



Caption Dump truck covering the fill before exiting Pole 03 site .

Photo Attributes Capture Date/Time: Thu Jul 20 2017 10:19:05 GMT-0700 (PDT)
Coordinates: 32.919448, -117.031558
View Direction: Southwest

Photo



Caption Restricted area clearly marked along access road to Pole 04 site .

Photo Attributes Capture Date/Time: Thu Jul 20 2017 09:58:31 GMT-0700 (PDT)
 Coordinates: 32.915509, -117.036837
 View Direction: East

Photo



Caption Traffic flaggers in place on Pomerado Road.

Photo Attributes Capture Date/Time: Thu Jul 20 2017 09:56:34 GMT-0700 (PDT)
 Coordinates: 32.895605, -117.107667
 View Direction: East

Daily Checklist

Q1 – General Avoidance and Minimization: (a) Were the limits of work areas and access roads clearly marked? (b) Were construction activities limited to CPUC-approved work areas? Met Requirements

Q1 Notes Met requirements.

Q2 – Air Quality/GHG: (a) Were dust avoidance and minimization requirements implemented and monitored adequately? (b) Was dust generation below required thresholds? (c) Were equipment Met Requirements

and vehicles maintained and operated in a manner to limit emissions? (d) Was organic waste collected and separated from non-organic waste for appropriate composting or recycling, as appropriate?

Q2 Notes	Met requirements.
Q3 – Special-Status Plants: Were impact avoidance and minimization requirements for special-status plants implemented adequately (e.g., avoiding sensitive areas)?	Met Requirements
Q3 Notes	Met requirements.
Q4 – Wildlife (Non-Avian): Were impact avoidance and minimization requirements for wildlife implemented adequately (e.g., avoiding sensitive areas, covering excavations, and inspecting equipment/trenches)?	Met Requirements
Q4 Notes	Met requirements.
Q5 – Nesting and Burrowing Birds: (a) Were active nests and occupied burrows identified and monitored during applicable seasons, as required? (b) Were impact avoidance and minimization requirements for any active nests or occupied burrows implemented adequately?	Met Requirements
Q5 Notes	Met requirements.
Q6 – Water Features and Aquatic Habitat: Were water features avoided?	N/A
Q7 – Stormwater, Erosion, and Sediment Control: (a) Were erosion and sediment control BMPs in place and functioning properly? (b) Were inactive or completed work areas stabilized and/or restored adequately?	Met Requirements
Q7 Notes	Met requirements.
Q8 – Invasive Weed Control: Were procedures to prevent the spread of invasive weeds implemented adequately?	Met Requirements
Q8 Notes	Met requirements.
Q9 – Hazardous Materials and Waste Management: (a) Were hazardous materials stored and labeled properly? (b) Was hazardous material waste disposed of appropriately? (c) Were any spills or leaks addressed adequately? (d) Was solid waste collected and disposed of adequately?	Met Requirements
Q9 Notes	Met requirements.
Q10 – Fire Management: (a) Were fire prevention procedures in place? (b) Was firefighting equipment available on site?	Met Requirements
Q10 Notes	Fire safety techs on site.
Q11 – Cultural, Paleontological, and Tribal Resources: (a) Were cultural, paleontological, and tribal resources monitoring and impact avoidance occurring as required? (b) If potential resources or human remains were inadvertently discovered, were response procedures and protocols implemented as required?	Met Requirements
Q11 Notes	All monitors on site.
Q12 – Construction Noise: (a) Were noise minimization measures in place, as required? (b) If noise complaints were received, were they documented and addressed, as required?	Met Requirements
Q12 Notes	All requirements met.
Q13 – Maintain Access: (a) Was access to driveways (e.g., businesses, schools, residences) maintained as required? (b) Was access to recreational areas maintained and appropriate signage installed? (c) Was pedestrian and bicycle access maintained, or were detours clearly defined?	Met Requirements
Q13 Notes	All requirements met.
Q14 – Traffic Control (a) Were flaggers present at all times? (b) Were barriers, cones, and signs in place? (c) Were detours clearly marked?	Met Requirements
Q14 Notes	All requirements met.
Q15 – Helicopter Use (a) Were helicopter use restrictions implemented adequately? (b) Were helicopter take-off and landing sites within prescribed limits?	N/A
Q16 – Worker Training and Communication: Have all workers on site received the required environmental trainings for the project?	Met Requirements
Q16 Notes	All requirements met.
Q17 – MMCRP Implementation: (a) Were project activities consistent with the approved project as defined in the EIR and subsequent CPUC authorizations? (b) Were MMCRP procedures implemented adequately?	Met Requirements
Q17 Notes	All requirements met