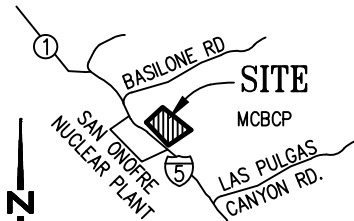


P.B. 7 PG. 39  
**RANCHO SANTA MARGARITA  
 Y LAS FLORES**  
 MARINE CORPS BASE  
 CAMP PENDLETON

ROS 18525  
 2004-1163998  
 12-10-04

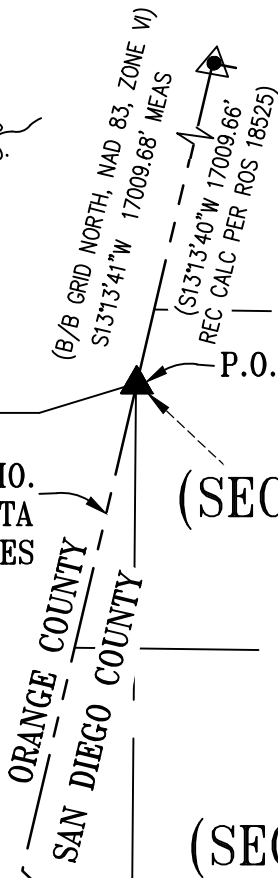
ROS 794  
 FILE NO. 3067  
 01-17-40



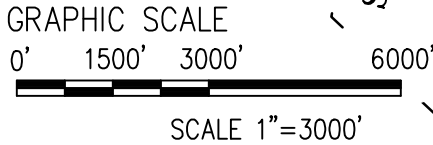
**VICINITY MAP**  
 NO SCALE

NAD83, CA ZONE VI  
 (EPOCH 2007.0)  
 N: 2094775.00  
 E: 6152563.39

**BNDY. RHO.  
 SANTA MARGARITA  
 Y LAS FLORES**

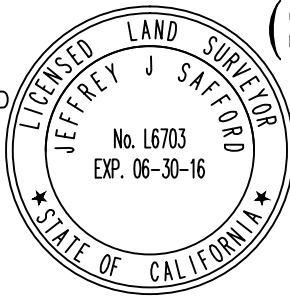


NOTE: TO OBTAIN GROUND  
 DISTANCES DIVIDE GRID  
 DISTANCES BY 0.999956366.



**LEGEND**

- ▲ INDICATES A FOUND 1-1/2" I.P. W/ DISC "3101 LS 4753 2004" AS SHOWN ON ROS 18525.
  - ▲ INDICATES A FOUND ORANGE COUNTY SURVEYOR'S BRASS CAP IN CONCRETE STAMPED "ORANGE COUNTY SURVEYOR, 4-94, 3110, ORANGE COUNTY, SAN DIEGO, CPMCB" AS SHOWN ON ROS 18525.
- P.O.C.** INDICATES POINT OF COMMENCEMENT.  
**T.P.O.B.** INDICATES TRUE POINT OF BEGINNING.  
 TOTAL ACREAGE: 0.181 ACRES MORE OR LESS.



THIS PLAT WAS PREPARED BY ME OR UNDER MY DIRECTION IN CONFORMANCE WITH THE LAND SURVEYOR'S ACT ON NOVEMBER 19, 2015.

*Jeffrey J. Safford*  
 JEFFREY J. SAFFORD L6703

**NAVY**  
 REVIEW: \_\_\_\_\_

APPROVED: \_\_\_\_\_

**SHEET 1 OF 2**

**UGE**

<b>SAN DIEGO GAS &amp; ELECTRIC COMPANY</b> SAN DIEGO, CALIFORNIA		ORIGINATOR: T. MYERS	OK TO INSTALL:	PRE-REQ./JOB KEY NO.
		SURVEYED BY: TSAC/TAO	R/W OK:	
<b>TL-695B JAPANESE MESA TO TALEGA TAP</b> MARINE CORPS BASE CAMP PENDLETON SAN DIEGO COUNTY		DRAWN BY: TSAC/TF	DATE:	CONST. NO.
		DATE: 11-19-15	THOS. BROS. 1047-G4	DRAWING NO.
		SCALE: 1"=3000'		
NO.	SUPPLEMENTS	DATE:	BY	APP'D
1	ORIGINAL NAVFAC SUBMITTAL	2/18/15	TF	JJS
2	NEW TL695 UNDERGROUND ALIGNMENT PER DRAWING PROVIDED 10-28-15 BY SDG&E	11-11-15	TF	JJS

TSAC: J:\10000 - SDGE LAND SURVEY MSA\60\_LAND SERVICES\65563\_10160\14079\CADD\SURVEY\65563-14079-ALIGN AND TOPO.dwg  
 POINTS FILE: J:\10000 - SDGE LAND SURVEY MSA\60\_LAND SERVICES\65563\_10160\14079\SURVEY\MASTER\65563.csv

RANCHO SANTA MARGARITA

Y LAS FLORES

MARINE CORPS BASE  
CAMP PENDLETON

(SEC. 19)

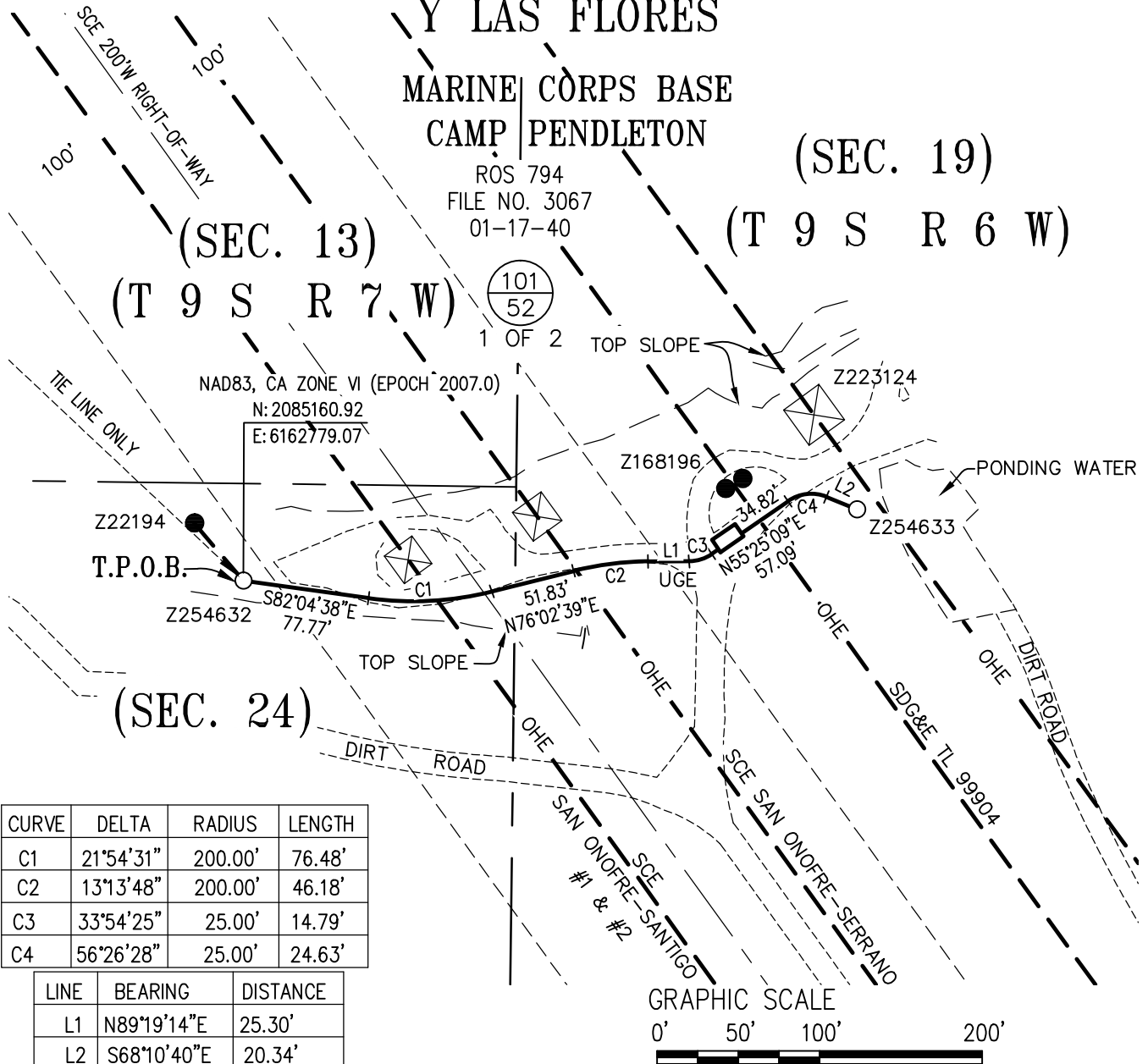
(T 9 S R 6 W)

ROS 794  
FILE NO. 3067  
01-17-40

(SEC. 13)  
(T 9 S R 7 W)

101  
52  
1 OF 2

SEE SHEET 1



CURVE	DELTA	RADIUS	LENGTH
C1	21°54'31"	200.00'	76.48'
C2	13°13'48"	200.00'	46.18'
C3	33°54'25"	25.00'	14.79'
C4	56°26'28"	25.00'	24.63'

LINE	BEARING	DISTANCE
L1	N89°19'14"E	25.30'
L2	S68°10'40"E	20.34'



SHEET 2 OF 2 UGE SCALE 1"=100'

<b>SAN DIEGO GAS &amp; ELECTRIC COMPANY</b> SAN DIEGO, CALIFORNIA  <b>TL-695B JAPANESE MESA TO TALEGA TAP</b> MARINE CORPS BASE CAMP PENDLETON SAN DIEGO COUNTY	ORIGINATOR: T. MYERS	OK TO INSTALL:	PRE-REQ./JOB KEY NO.		
	SURVEYED BY: TSAC/TAO	R/W OK:	CONST. NO.		
	DRAWN BY: TSAC/TF	DATE: 11-19-15	THOS. BROS. 1047-G4	DRAWING NO.	
	SCALE: 1"=100'				
NO.	SUPPLEMENTS		DATE:	BY	APP'D
1	ORIGINAL NAVFAC SUBMITTAL		2/18/15	TF	JJS
2	NEW TL695 UNDERGROUND ALIGNMENT PER DRAWING PROVIDED 10-28-15 BY SDG&E		11-11-15	TF	JJS

TSAC: J:\10000 - SDGE LAND SURVEY MSA\60 LAND SERVICES\65563\_10160\14079\CADD\SURVEY\65563-14079-ALIGN AND TOPO.dwg  
POINTS FILE: J:\10000 - SDGE LAND SURVEY MSA\60 LAND SERVICES\65563\_10160\14079\SURVEY\MASTER\65563.csx