

**Southern California Edison Company's Response to the California Public Utilities
Commissions' Deficiency Report For The Riverside Transmission Reliability Project
Application (A.15-04-013)
July 2015**

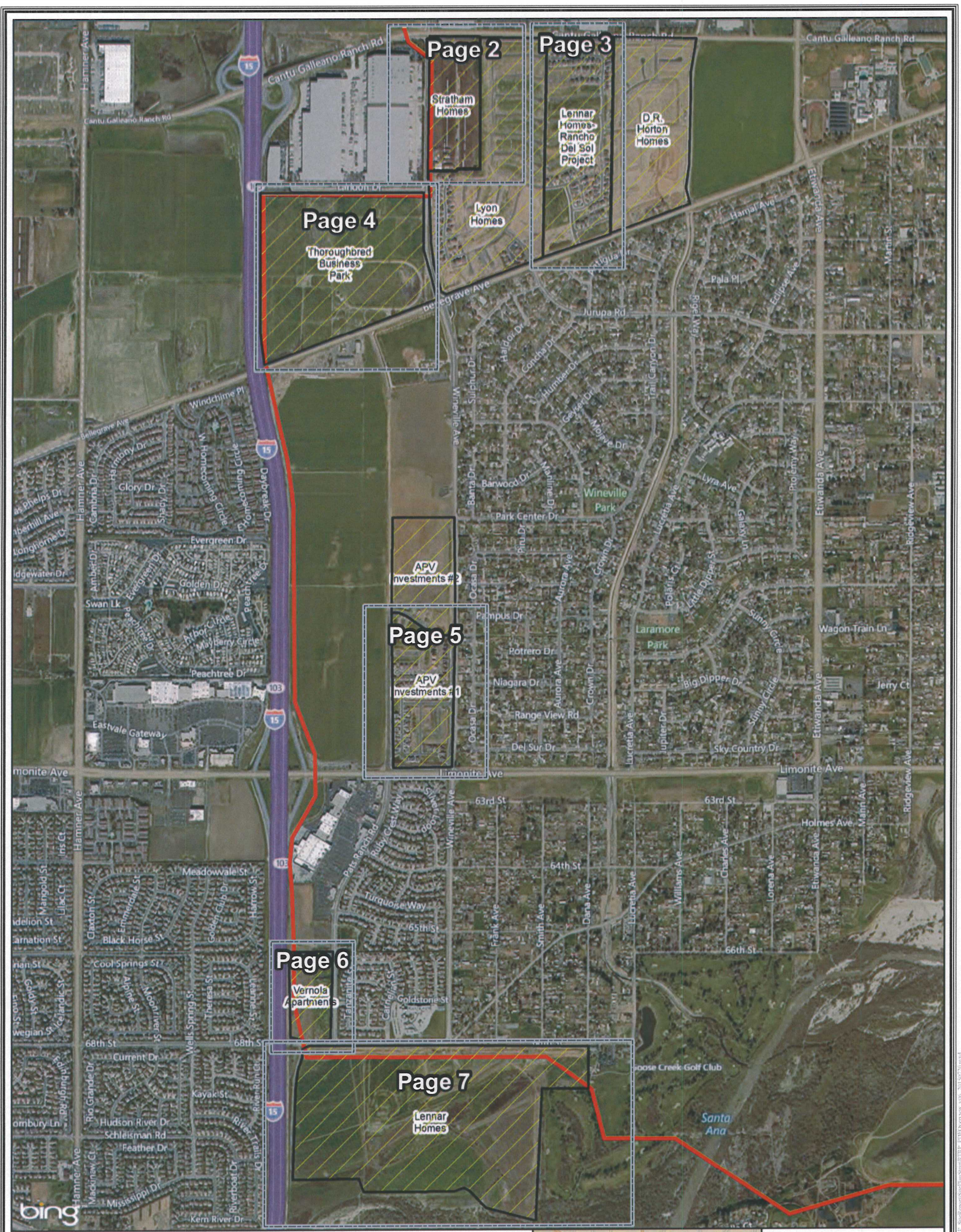
ATTACHMENT 1

List and Map of Approved Projects


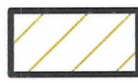

Attachment 1 – List and Map of Approved Projects

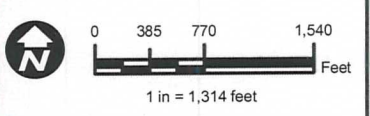
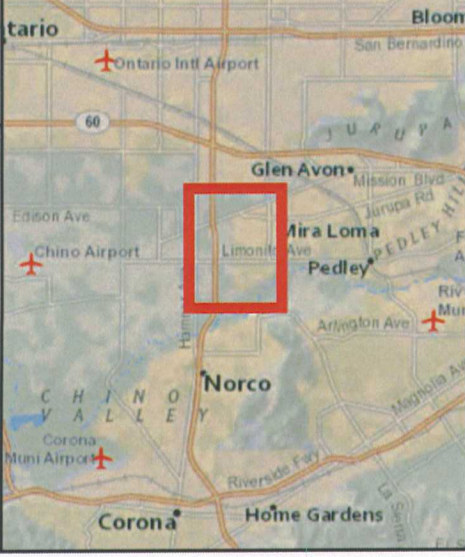
Developments Currently Entitled and/or Under Construction in Vicinity of Proposed Project Route in Jurupa Valley
(As of July 1, 2015)

- 1) Stratham Homes: SEC of Wineville/Cantu-Galleano Road
Tract Map # 36692 / 176 Residential lots
Current status: Operating dairy (not under construction)
Approved: 12/18/2014
- 2) Lennar Homes: Cantu-Galleano Road to Bellegrave Ave., midway between Wineville and Etiwanda
Tract Map # 33461 / 203 Residential lots
Current status: Graded, homes under construction
Approved: 2/20/2014
- 3) Lyon Homes (Hillcrest Homes): northeast corner of Wineville/Bellegrave Ave.
Tract Map # 31778-1 / 112 Residential lots
Current Status: Homes under construction
Approved: 3/20/2014
Originally approved by Riverside County: 4/4/06
- 4) APV Investments #1: Limonite, between Pats Ranch Road and Wineville
Tract Map # 33428-1 / 138 Residential lots
Current Status: Homes completed
Approved: 2/20/2014
- 5) APV Investments #2: North of Limonite, between Pats Ranch Road and Wineville
Tract Map # 33428-2 / 106 Residential lots
Current Status: Vacant land (not under construction)
Approved: 6/4/2015
- 6) Vernola Marketplace Apartments: northwest corner of 68th St./Pats Ranch Road
Multifamily development / 397 units
Current Status: Vacant land (not under construction)
Approved: 3/19/2015
- 7) Lennar Homes (Riverbend Housing Project): 68th Street
Tract Map # 36391 – 464 Residential lots
Current Status: Grading lots
Approved: 12/18/2014
- 8) Thoroughbred Farms Business Park: northwest corner of Bellegrave Avenue and Wineville Road
Industrial/Commercial Park (APN Nos. 160-040-014, 160-040-024, & 160-040-026)
Specific Plan 376 (SP376) – 108 acres
Current Status: Vacant land (not under construction)
Approved: 12/6/12
- 9) D.R. Horton Homes
Vintage development / 108 residences
Sage Pointe development / 109 residences
Current Status: Homes under construction
Approved: 11/20/14



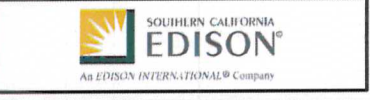
RTRP Entitled and/or Under Construction Projects
 Within the Vicinity of EIR Route

-  Final EIR Overhead Route (For reference)
-  Entitled / Under Construction
-  Index Grid

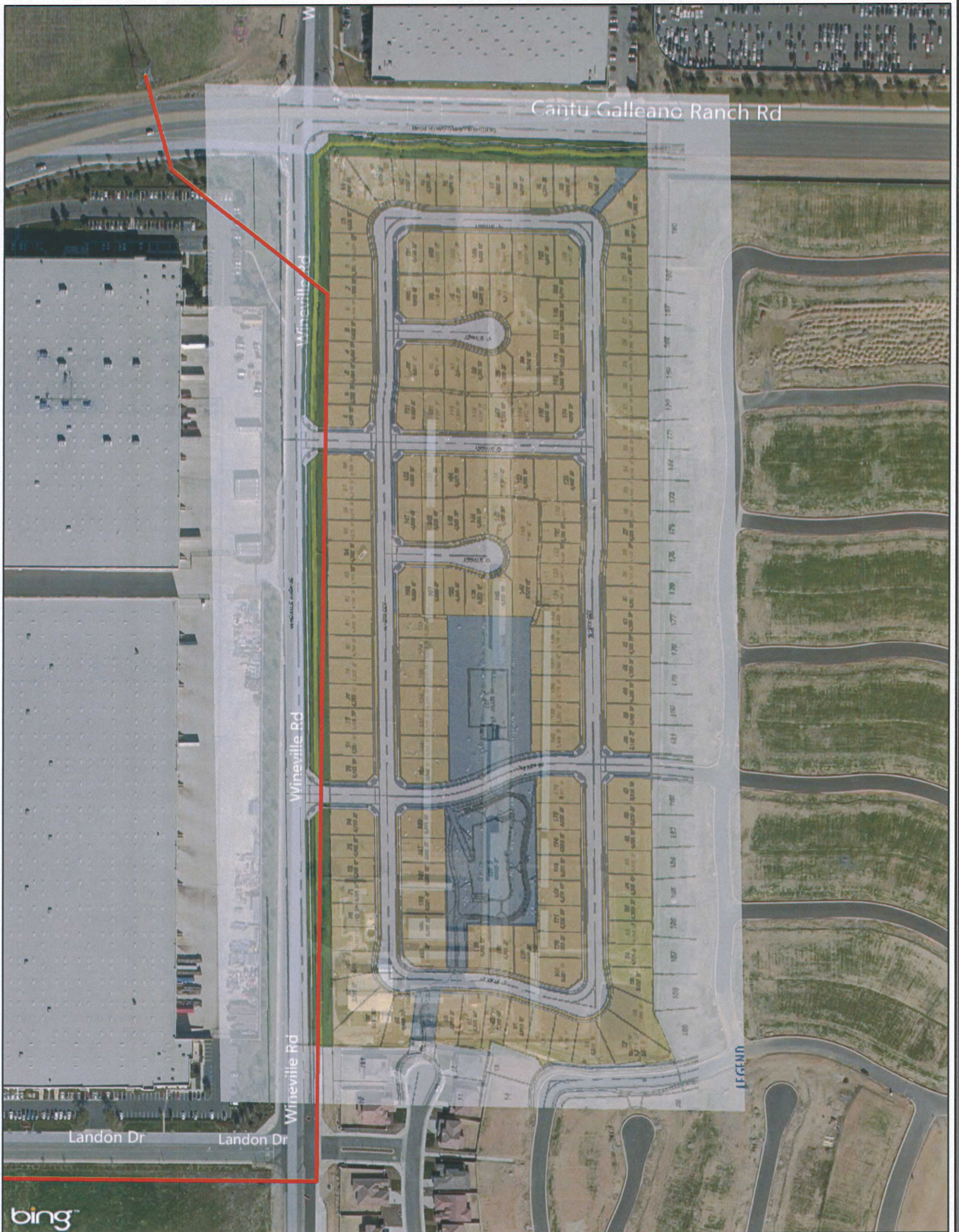


Notification #: 201864893
 Date: 7/24/2015
 File Name: RTRP_PDFOverview_v06_20150720.mxd
 Version #:

Features depicted herein are planning level accuracy, and intended for informational purposes only. Distances and locations may be distorted at the scale. Always consult with the proper legal documents or agencies regarding such features. Real Properties Department
 Thomas Bros. Maps is a registered trademark of Rand McNally & Company.
 © Rand McNally & Company. All rights reserved.
 Service Layer Credits: Image courtesy of USGS © 2015 Microsoft Corporation © 2015 HERE © AND
 Content may not reflect National Geographic's current map policy.
 Sources: National Geographic, Esri, DeLorme, HERE, UNEP-WCMC,



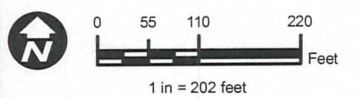
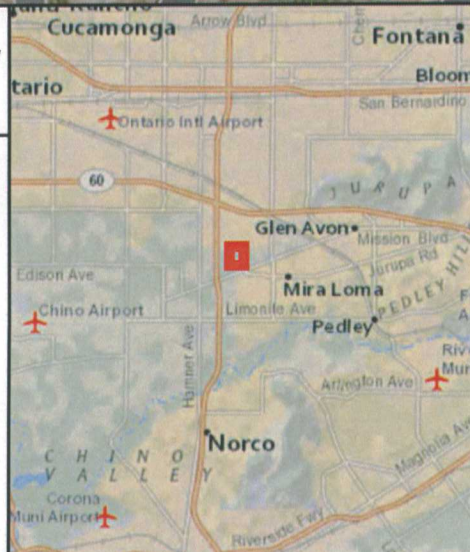
Path: P:\RTRP\TSP\Map02_PlanSheet\RTRP_PDFOverview_v06_20150720.mxd



**RTRP Entitled and/or Under Construction Projects
Stratham Homes**

— Final EIR Overhead Route (For reference)

*The final unit layout of the Lyons Homes development is not depicted. Lyons Homes is located south and east of Stratham Homes.

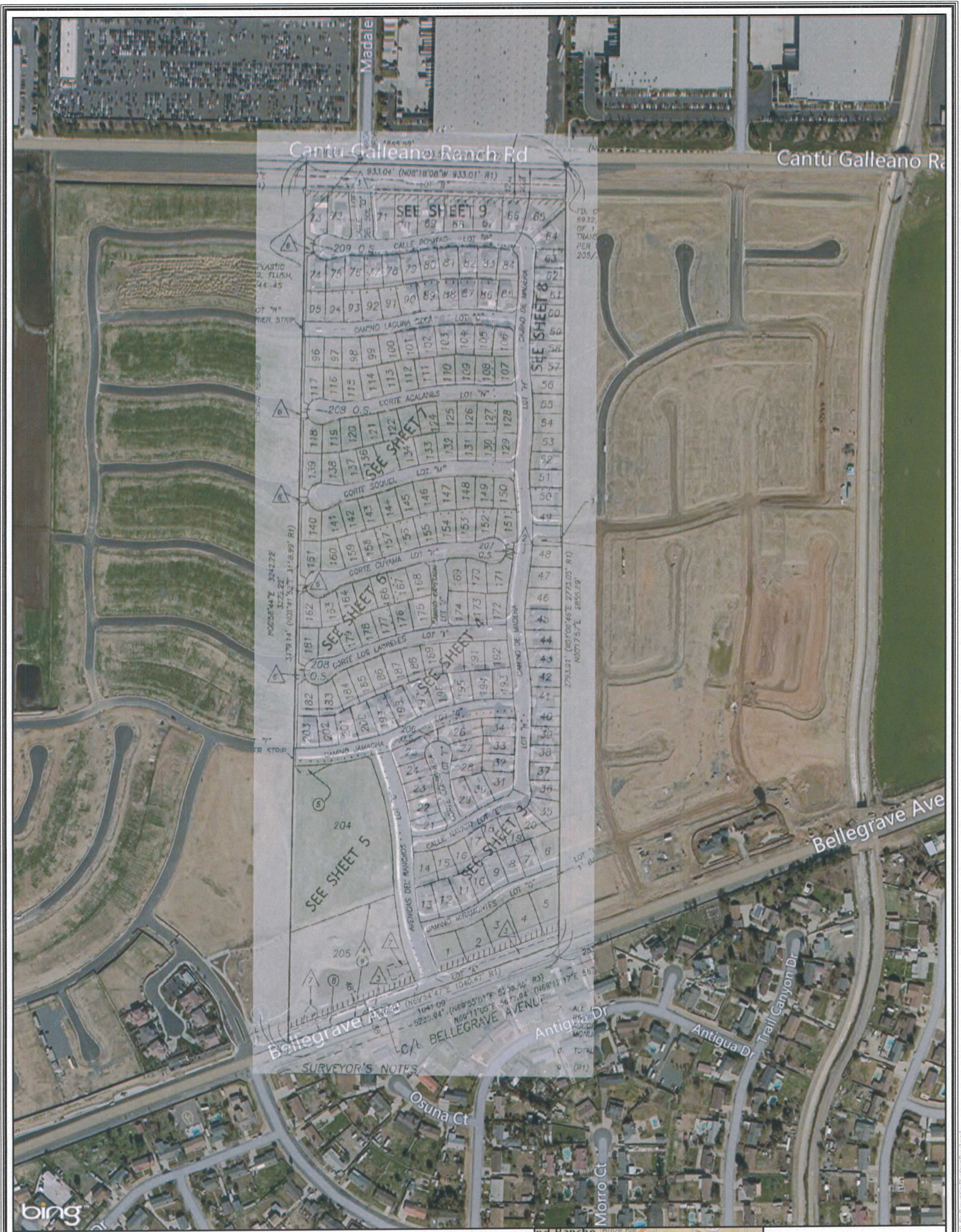


Notification #: 20196-4893
Date: 7/24/2015
File Name: Page1.mxd
Version #:

Features depicted herein are planning level accuracy, and intended for informational purposes only. Distances and locations may be distorted at the scale. Always consult with the proper legal documents or agencies regarding such features. Real Properties Department
Thomas Bros. Maps is a registered trademark of Rand McNally & Company.
Reproduced with permission granted by Rand McNally & Company.
© Rand McNally & Company. All rights reserved.
Service Layer Credits: Image courtesy of USGS © 2015 Microsoft Corporation © 2015 HERE © AND
Content may not reflect National Geographic's current map policy.
Sources: National Geographic, Esri, DeLorme, HERE, UNEP-WCMC,

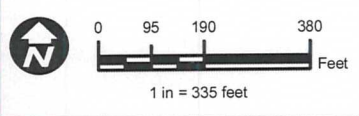
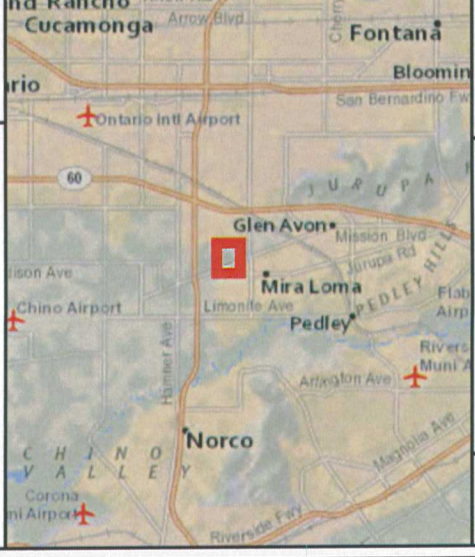


Path: P:\RTRP\AC\N\Map\Projects\Entitled\Transmission\Ketchikan\Project_WLD\Work\Map_2015\7-24-15_EIR_Southampton\SitePlan\SitePage1.mxd



RTRP Entitled and/or Under Construction Projects
Lennar Homes - Rancho Del Sol Project

Final EIR Overhead Route (For reference)



Notification #: 201864893
 Date: 7/24/2015
 File Name: Page2.mxd
 Version #:

Features depicted herein are planning level accuracy, and intended for informational purposes only. Distances and locations may be distorted at this scale. Always consult with the proper legal documents or agencies regarding such features. Real Properties Department Thomas Bros. Maps is a registered trademark of Rand McNally & Company. Reproduced with permission granted by Rand McNally & Company. © Rand McNally & Company. All rights reserved. Service Layer Credits: Image courtesy of USGS © 2015 Microsoft Corporation © 2015 HERE © AND Content may not reflect National Geographic's current map policy. Sources: National Geographic, Esri, DeLorme, HERE, UNEP-WCMC.



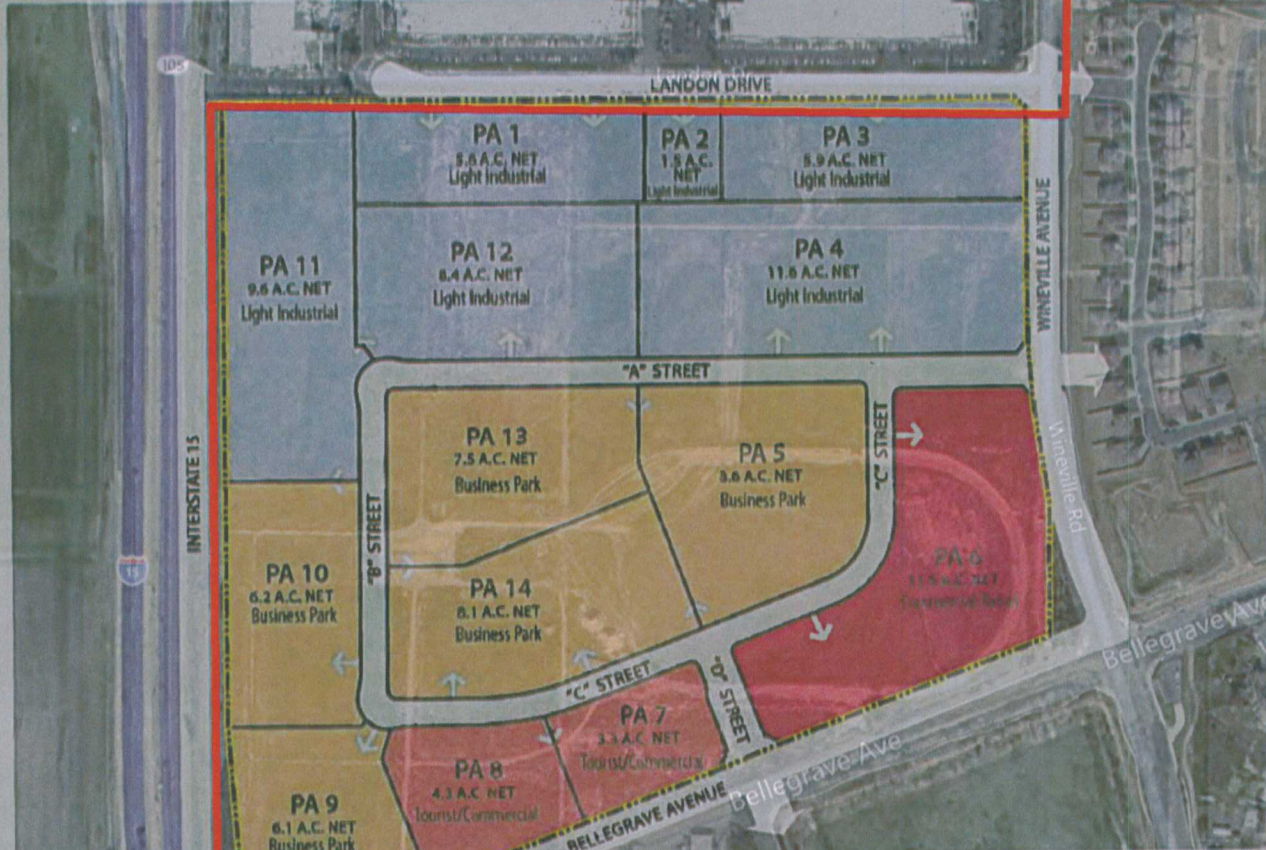
\\P:\Projects\2015\20150724\20150724_RTRP_SiteReport\SitePlan\Map2.mxd

Section III. Development Plans and Standards

B. Land-Use Plan

Figure III-1, Land Use Plan

THOROUGHbred FARM
BUSINESS PARK



STATISTICAL SUMMARY

PLANNING AREA	ACREAGE
Light Industrial	42.6
Business Park	36.5
Commercial/Retail	11.5
Tourist/Commercial	7.6
Major Circulation	10.0
Other	10.2
Subtotal - Light Industrial	42.6
Subtotal - Business Park	36.5
Subtotal - Commercial/Retail	11.5
Subtotal - Tourist/Commercial	7.6
Major Circulation	N/A
Other	10.0
Subtotal Other	10.0
PROJECT TOTALS	104.2

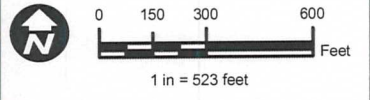
Light Industrial	42.6
Business Park	36.5
Commercial/Retail	11.5
Tourist/Commercial	7.6
Major Circulation	10.0
Other	10.2

Thoroughbred Farm IDJ Specific Plan No. 376

III-14

RTRP Entitled and/or Under Construction Projects
Thoroughbred Farm Business Park

— Final EIR Overhead Route (For reference)



Notification #: 201864893
Date: 7/24/2015
File Name: Page6.mxd
Version #:

Features depicted herein are planning level accuracy, and intended for informational purposes only. Distances and locations may be distorted at the scale. Always consult with the proper legal documents or agencies regarding such features. Real Properties Department
Thomas Bros. Maps is a registered trademark of Rand McNally & Company.
Reproduced with permission granted by Rand McNally & Company.
© Rand McNally & Company. All rights reserved.
Service Layer Credits: Image courtesy of USGS © 2015 Microsoft Corporation © 2015 HERE © AND
Content may not reflect National Geographic's current map policy.
Sources: National Geographic, Esri, DeLorme, HERE, UNEP-WCMC.

