


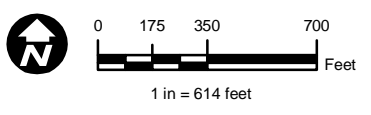


RTRP – Approved Projects

Within the Vicinity of EIR Route

-  Final EIR Overhead Route (For Reference)
-  ROW
-  Approved

Note: For purposes of responding to CPUC Deficiency Report #2, Question No. 10, "approved projects" are those developments in the City of Jurupa Valley that are in the path of overhead route described within the Riverside Transmission Reliability Project (RTRP) Final EIR and certified by the City of Riverside on or about February 5, 2013 and which are currently under construction or have received discretionary approval(s) from the local municipal authority.



Notification #: 201864893
 Date: 12/21/2015
 File Name: RTRP_Deficiency_Task10Map_v02_AA_S.mxd
 Version #: 01

Features depicted herein are planning level accuracy, and intended for informational purposes only. Distances and locations may be distorted at this scale. Always consult with the proper legal documents of agencies regarding such features. Real Properties Department Thomas Bros. Maps is a registered trademark of Rand McNally & Company. Reproduced with permission granted by Rand McNally & Company. © Rand McNally & Company. All rights reserved. Service Layer Credits: Image courtesy of USGS © 2015 Microsoft Corporation © 2010 NAVTEQ © AND Content may not reflect National Geographic's current map policy. Sources: National Geographic, Esri, DeLorme, HERE, UNEP-WCMC, USGS, NASA, ESA, METI, NRCAN, GEBCO, NOAA, increment P Corp.



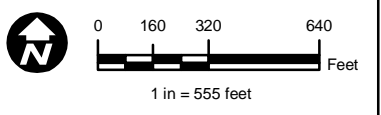


RTRP – Approved Projects

Within the Vicinity of EIR Route

- Final EIR Overhead Route (For Reference)
- ROW
- Approved

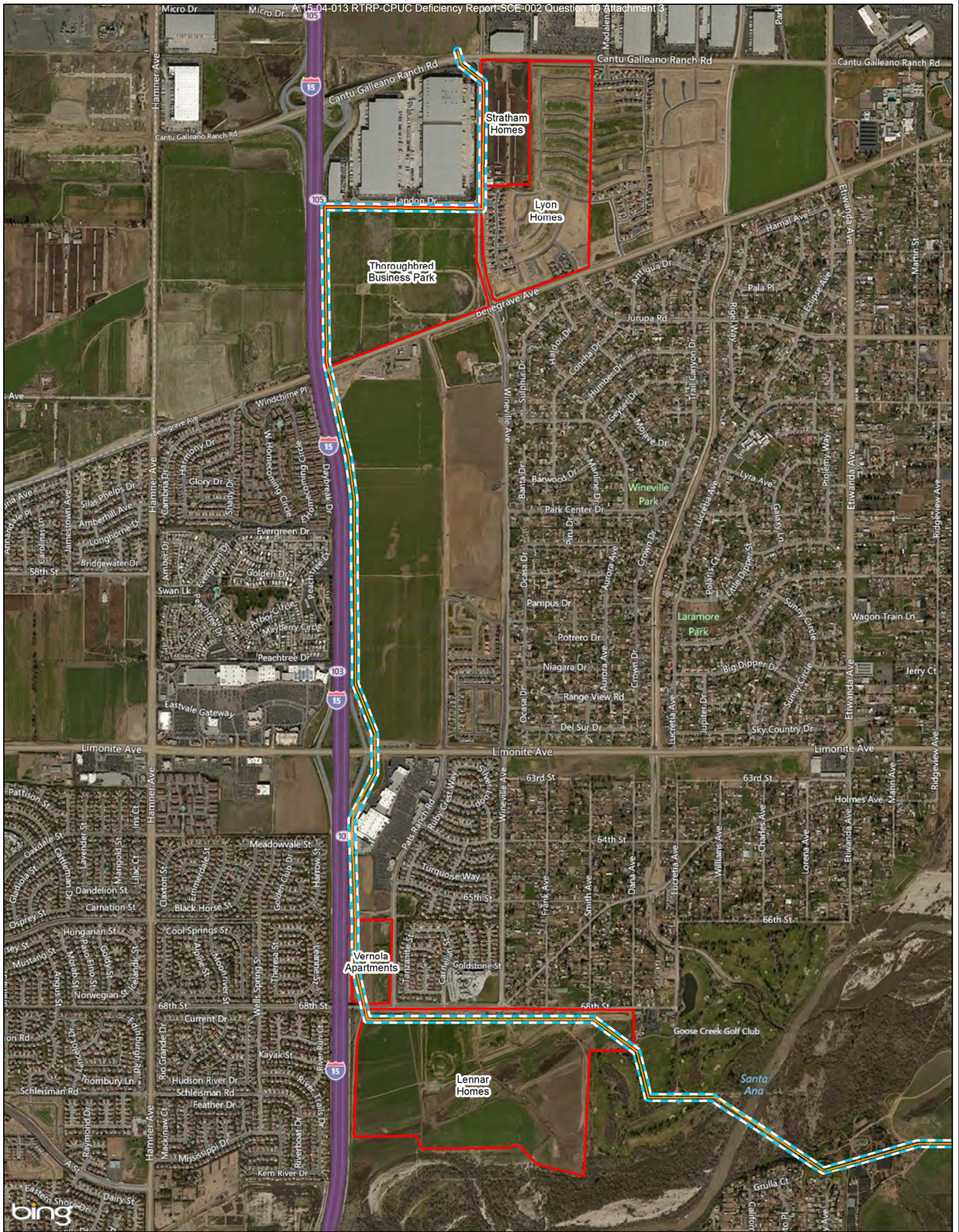
Note: For purposes of responding to CPUC Deficiency Report #2, Question No. 10, "approved projects" are those developments in the City of Jurupa Valley that are in the path of overhead route described within the Riverside Transmission Reliability Project (RTRP) Final EIR and certified by the City of Riverside on or about February 5, 2013 and which are currently under construction or have received discretionary approval(s) from the local municipal authority.



Notification #: 201864893
 Date: 12/21/2015
 File Name: RTRP_Deficiency_Task10Map_v02_AA_N.mxd
 Version #: 01

Features depicted herein are planning level accuracy, and intended for informational purposes only. Distances and locations may be distorted at this scale. Always consult with the proper legal documents of agencies regarding such features. Real Properties Department Thomas Bros. Maps is a registered trademark of Rand McNally & Company. Reproduced with permission granted by Rand McNally & Company. © Rand McNally & Company. All rights reserved. Service Layer Credits: Image courtesy of USGS © 2015 Microsoft Corporation © 2010 NAVTEQ © AND Content may not reflect National Geographic's current map policy. Sources: National Geographic, Esri, DeLorme, HERE, UNEP-WCMC, USGS, NASA, ESA, METI, NRCAN, GEBCO, NOAA, increment P Corp.



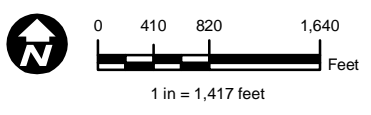


RTRP – Approved Projects

Within the Vicinity of EIR Route

- Final EIR Overhead Route (For Reference)
- ROW
- Approved

Note: For purposes of responding to CPUC Deficiency Report #2, Question No. 10, "approved projects" are those developments in the City of Jurupa Valley that are in the path of overhead route described within the Riverside Transmission Reliability Project (RTRP) Final EIR and certified by the City of Riverside on or about February 5, 2013 and which are currently under construction or have received discretionary approval(s) from the local municipal authority.



Notification #: 201864893
 Date: 12/21/2015
 File Name: RTRP_Deficiency_Task10Map_AA.mxd
 Version #: 01

Features depicted herein are planning level accuracy, and intended for informational purposes only. Distances and locations may be distorted at this scale. Always consult with the proper legal documents of agencies regarding such features. Real Properties Department Thomas Bros. Maps is a registered trademark of Rand McNally & Company. Reproduced with permission granted by Rand McNally & Company. © Rand McNally & Company. All rights reserved. Service Layer Credits: Image courtesy of USGS © 2015 Microsoft Corporation © 2010 NAVTEQ © AND Content may not reflect National Geographic's current map policy. Sources: National Geographic, Esri, DeLorme, HERE, UNEP-WCMC, USGS, NASA, ESA, METI, NRCAN, GEBCO, NOAA, increment P Corp.

